



LOFT OFFICE OR WAREHOUSE SPACE FOR LEASE

629 W. CERMAK ROAD CHICAGO, IL



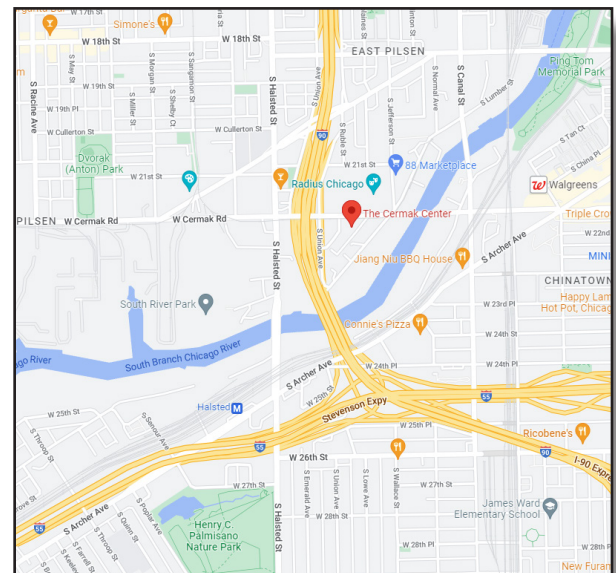
BUILDING FEATURES:

- 1,795-10,750 SF Loft Office or Warehouse Space Available ASAP
- Close proximity to shopping and dining
- 15' Ceiling Height
- Loft style space ideal for office & warehouse
- Easy access to the Dan Ryan Expressway
- Located five minutes away from Loop and McCormick Place

■ **Rental Rate: \$10.00- 12.00 PSF Modified Gross**

AVAILABLE SPACE:

SUITE	SIZE (SF)	TYPE
1st Floor	9,500 SF	Warehouse
150	8,200-10,750 SF	Loft Office
225	1,795 SF	Loft Office
301	1,984 SF	Loft Office
404	1,900 SF	Loft Office



FOR MORE INFORMATION:

RANDY OLCZYK
 Direct: 847.246.9611
 randy@chicagolandcommercial.com

RAY OKIGAWA
 Direct: 847.246.9632
 ray@chicagolandcommercial.com



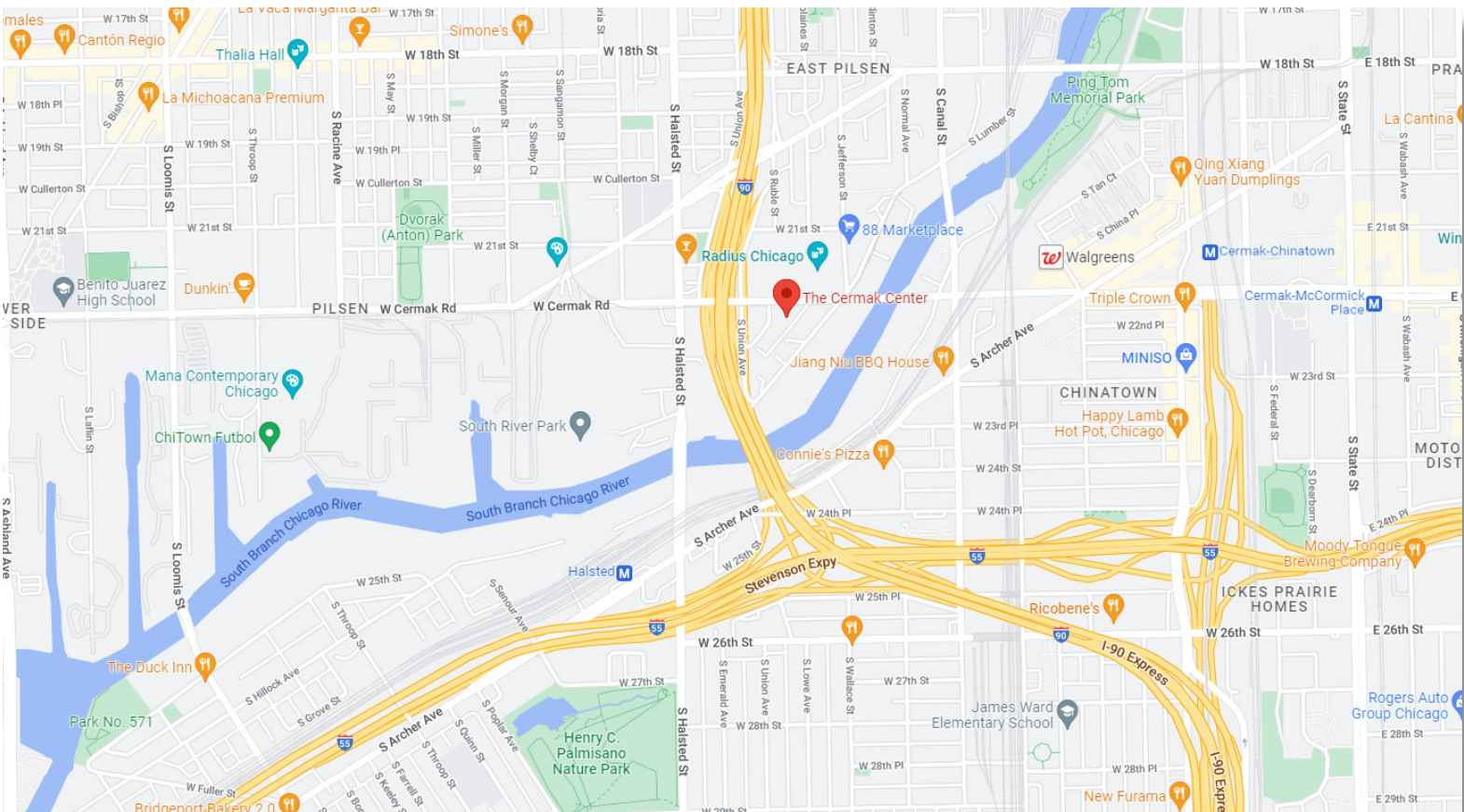
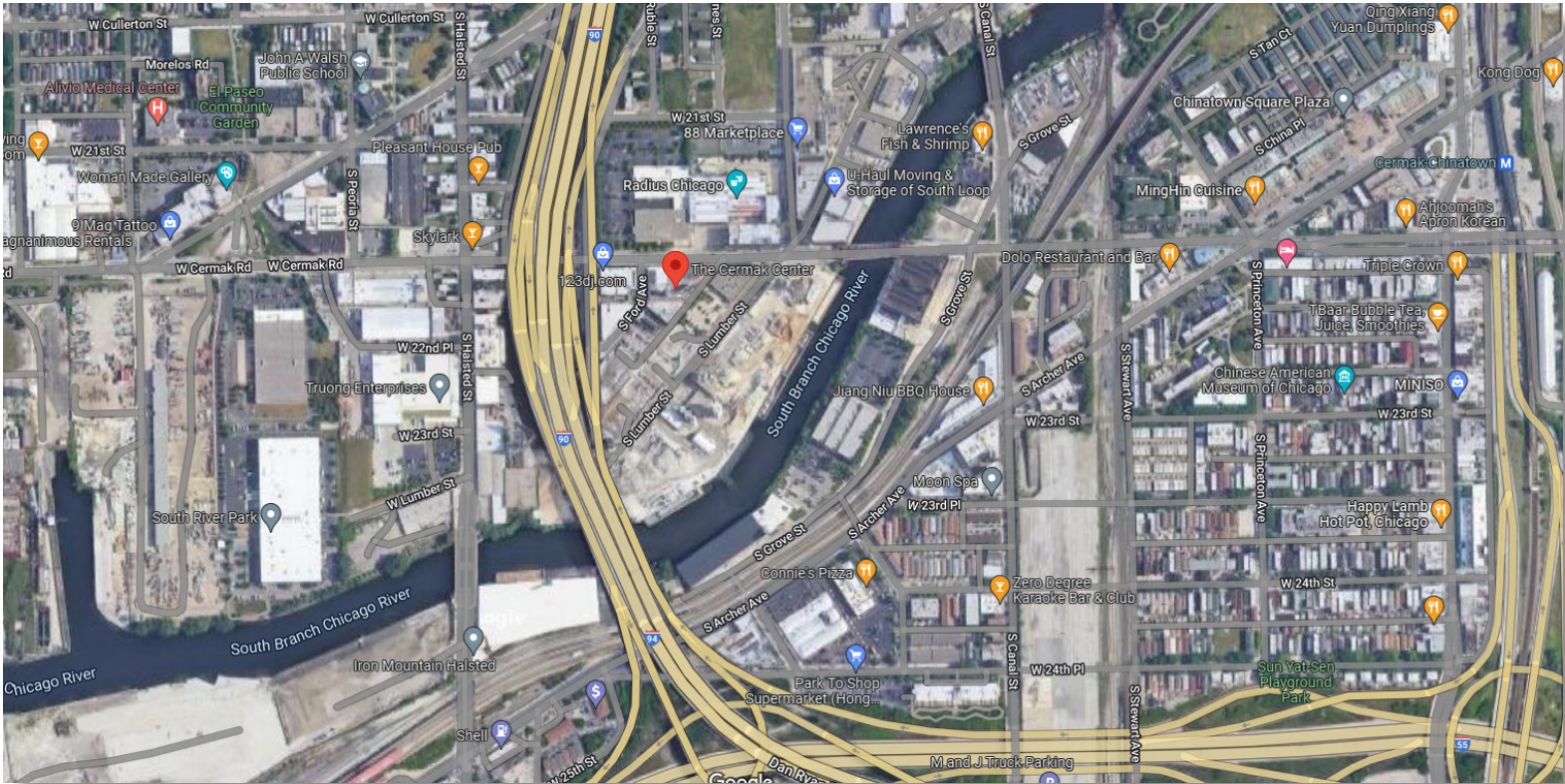
4811 Emerson Ave Suite 112, Palatine, IL



LOFT OFFICE OR WAREHOUSE SPACE FOR LEASE

629 W. CERMAK ROAD CHICAGO, IL

AREA MAPS

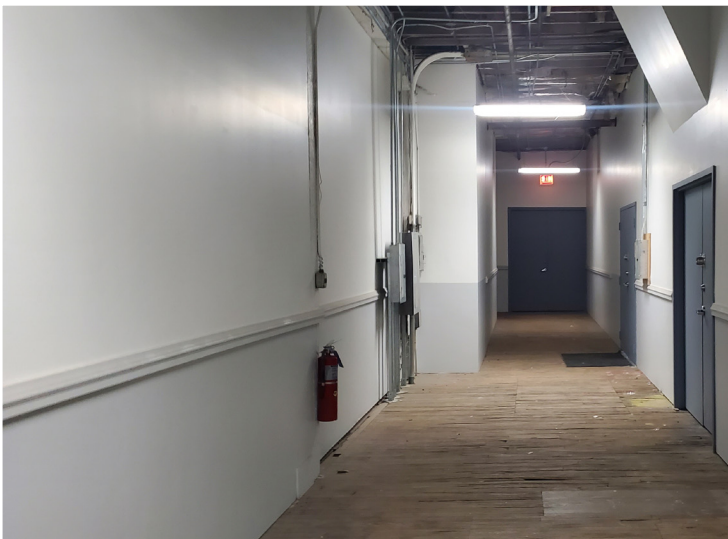
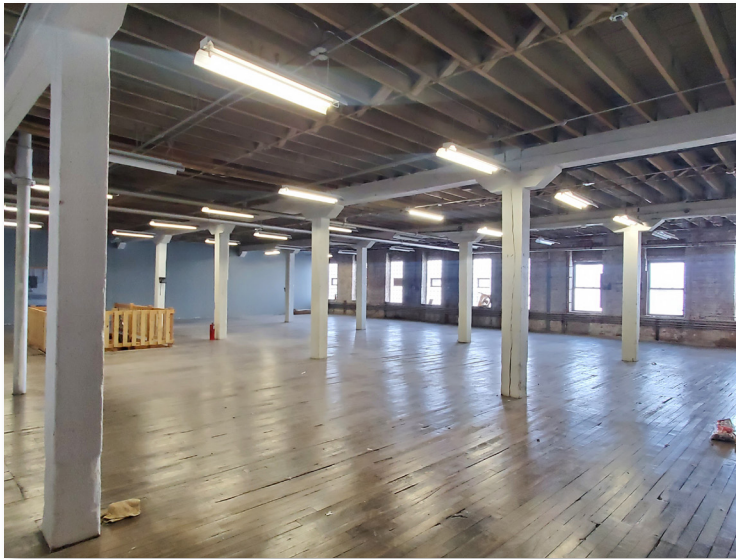
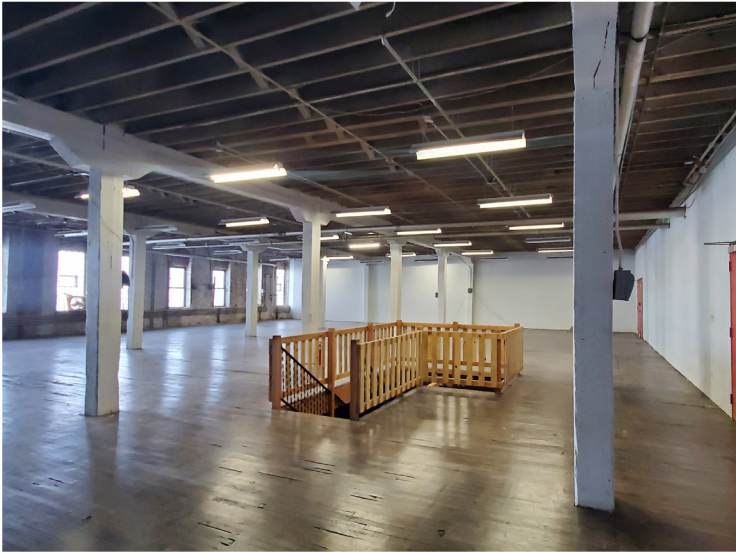




LOFT OFFICE OR WAREHOUSE SPACE FOR LEASE

629 W. CERMAK ROAD CHICAGO, IL

LOFT OFFICE PHOTOGRAPHS





LOFT OFFICE OR WAREHOUSE SPACE FOR LEASE

629 W. CERMAK ROAD CHICAGO, IL

BUILDING & WAREHOUSE PHOTOGRAPHS

