

357 & 381
GEARY

FOR LEASE | PROMINENT UNION SQUARE RETAIL / GALLERY SPACES



TCP
TOUCHSTONE
COMMERCIAL PARTNERS

 **Eliopoulos**Group

JARON ELIOPOULOS
415.608.6336 | jaron@tcpre.com

CAMERON TU
510.919.8193 | cameron@tcpre.com

PROPERTY SUMMARY

ADDRESS

357 & 381 Geary Street, San Francisco, CA 94102

AVAILABLE SPACE

357 Geary St: +/- 1,570 Square Feet

381 Geary St: +/- 1,180 Square Feet

RENTAL RATE

Call for Pricing

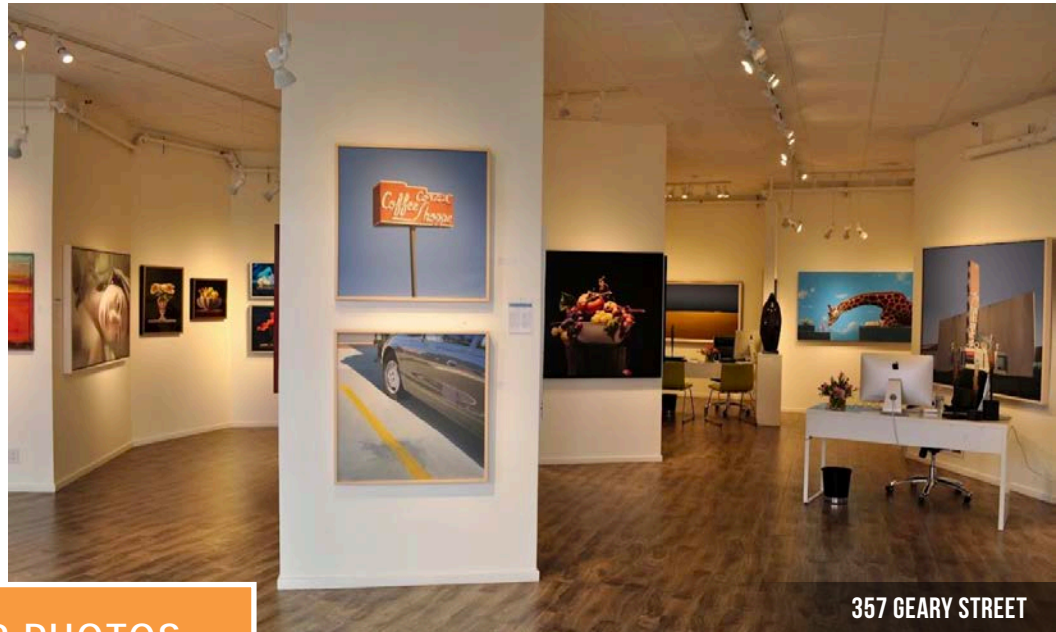
AVAILABLE

Immediately

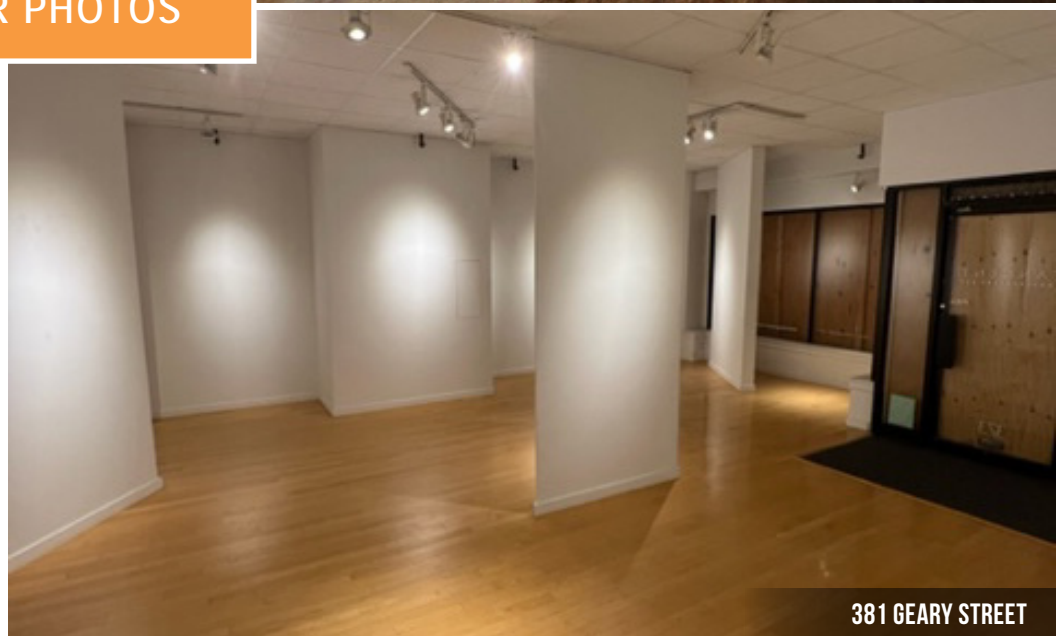
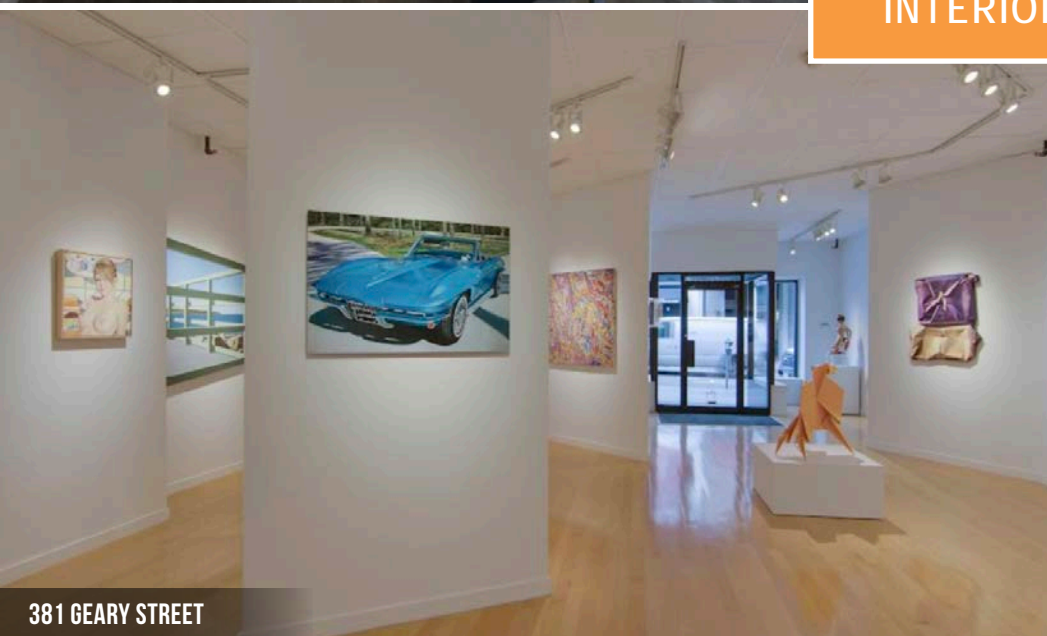
BUILDING ATTRIBUTES

- Prime Union Square Location
- Many Uses Considered
- Significant Glass Frontage
- 1/2 Block From Union Square



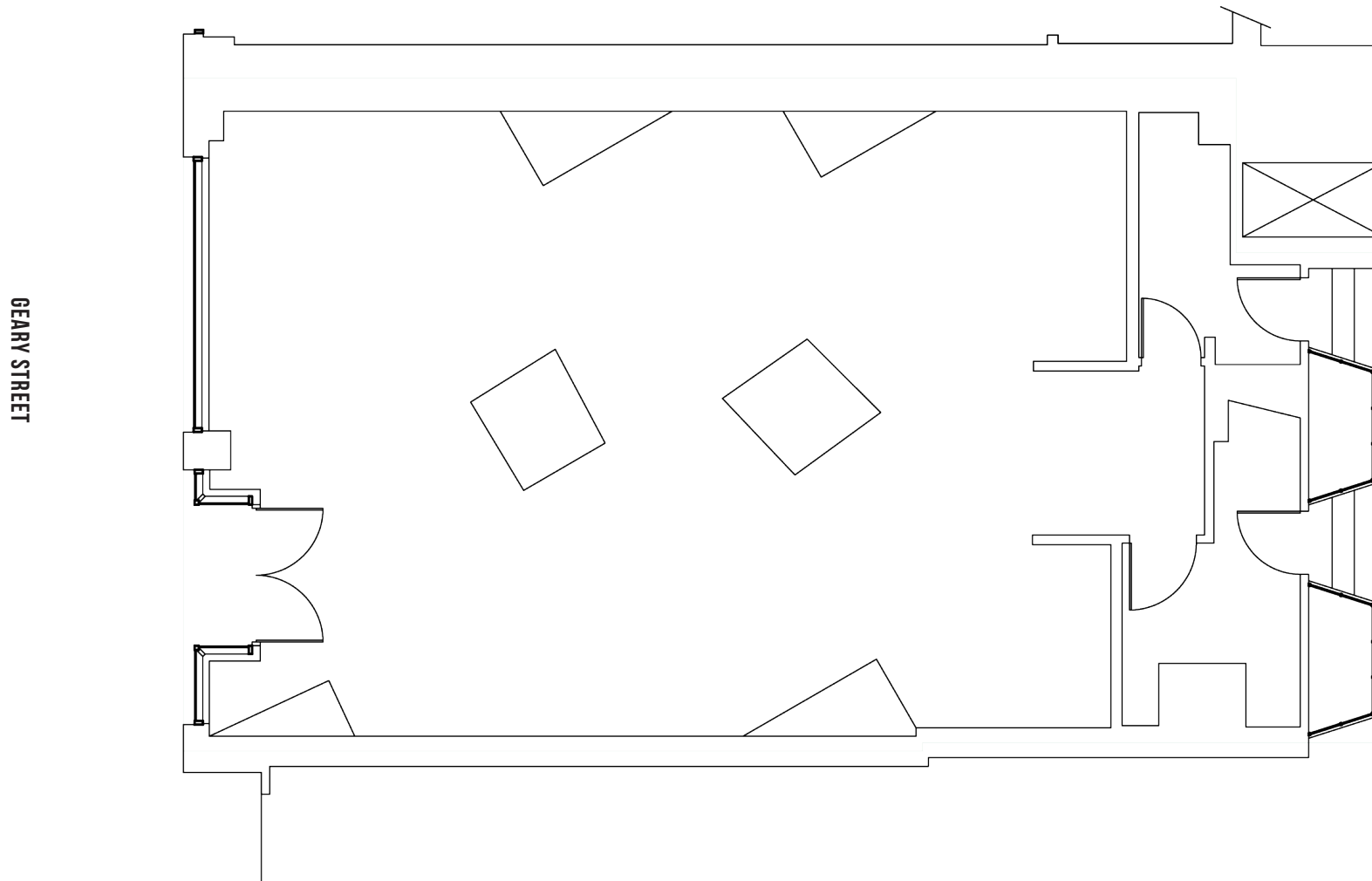


INTERIOR PHOTOS



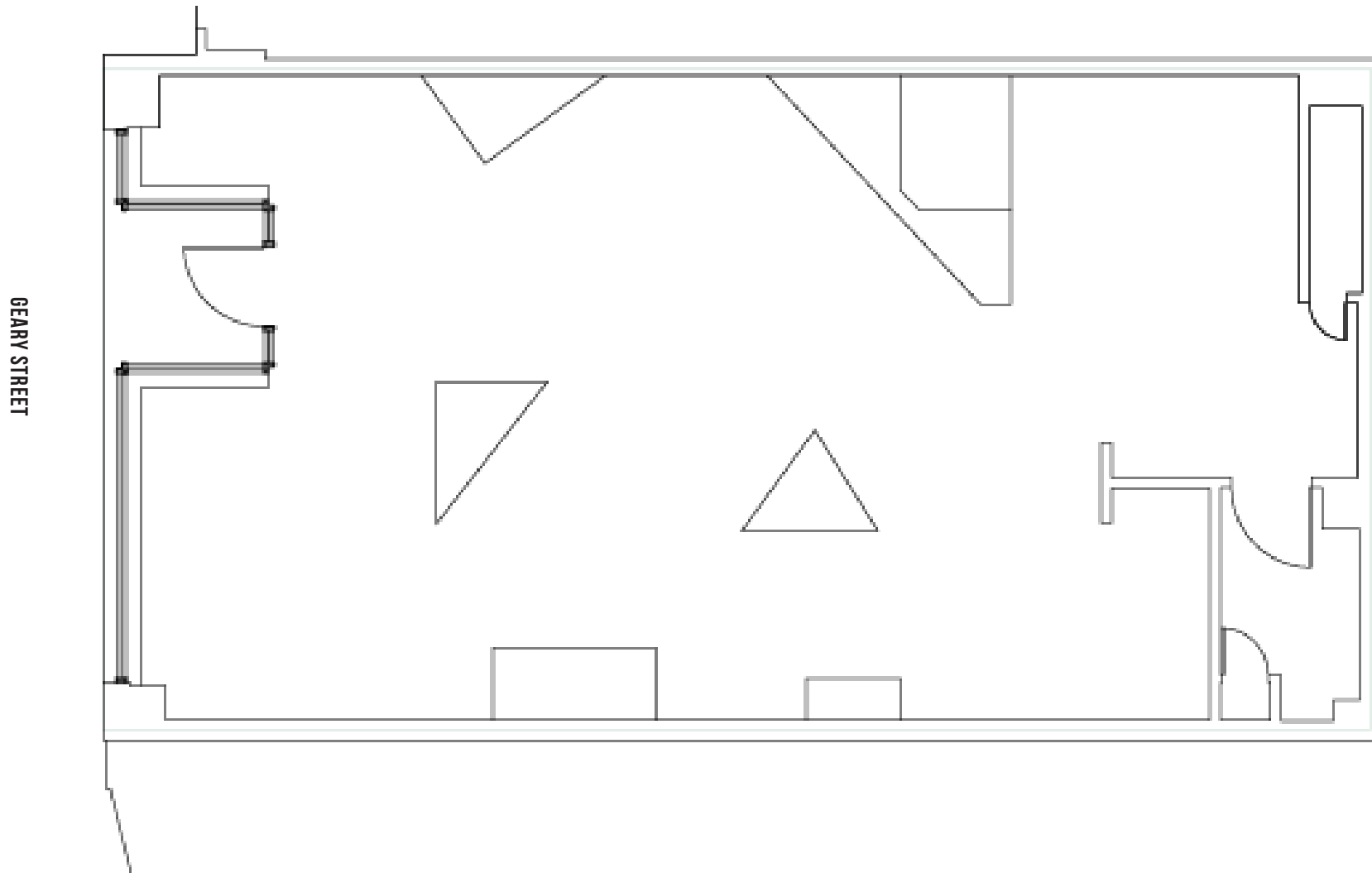
FLOOR PLAN - 357 GEARY ST

+/- 1,570 Square Feet



FLOOR PLAN - 381 GEARY ST

+/- 1,180 Square Feet



LOCATION OVERVIEW

Desirable Union Square location, walkable to public transit, nearby amenities and to surrounding neighborhoods.

NEARBY AMENITIES

- Union Square
- Westfield SF Centre
- Metreon
- Macy's Union Square
- Bloomingdale's
- Louis Vuitton
- Saks Fifth Avenue
- Tiffany & Co
- Apple Store - Union Square
- Niketown - SF
- Valentino
- O' by Claude Le Tohic
- Neiman Marcus



357 Geary St



381 Geary St



357 & 381 GEARY

TRANSIT OVERVIEW



5 MIN WALK

to Powell St. Muni

5 MIN WALK

to Powell St. Bart



4 MIN DRIVE

to I-80

5 MIN DRIVE

to I-280

7 MIN DRIVE

to HWY-101

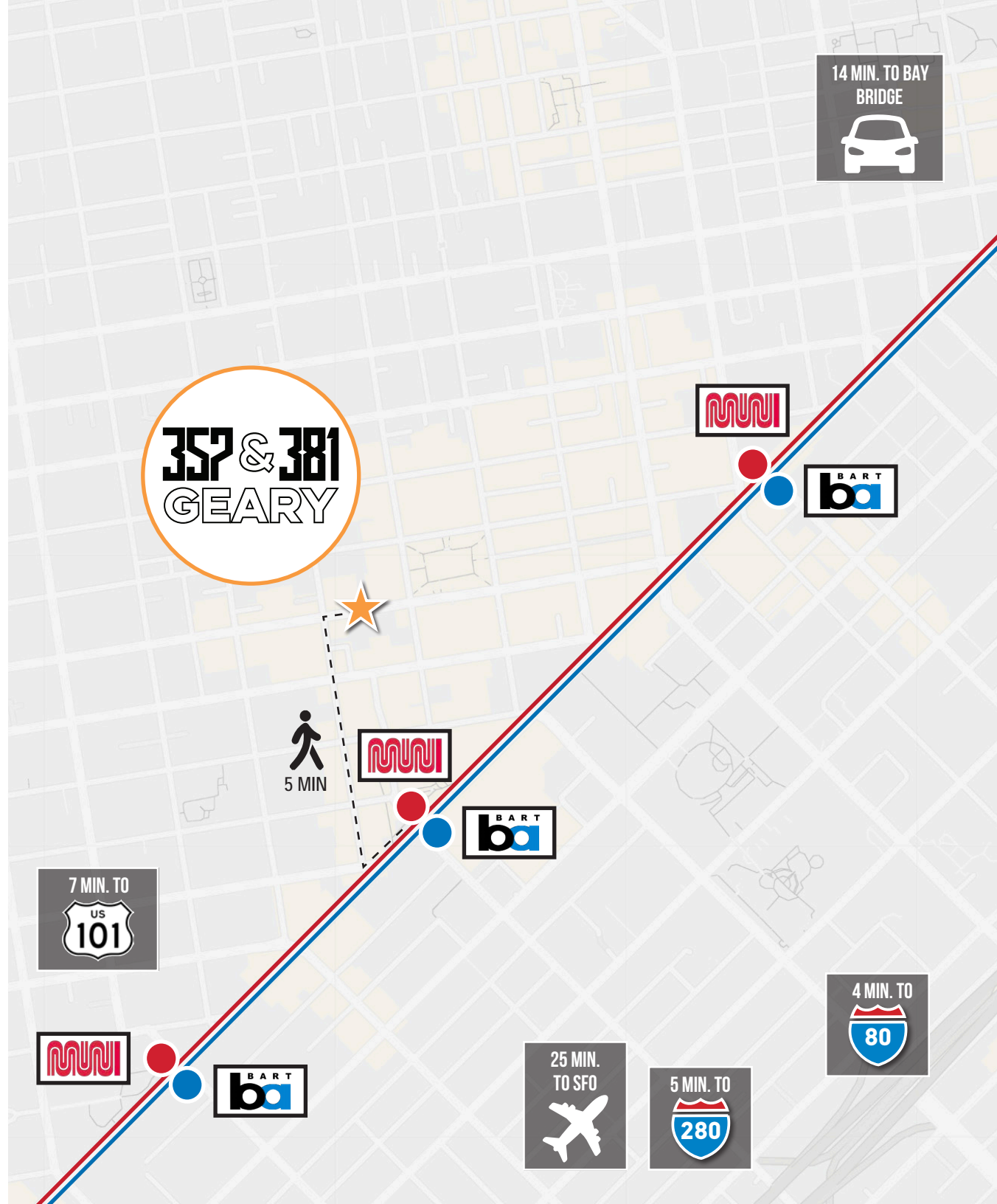
14 MIN DRIVE

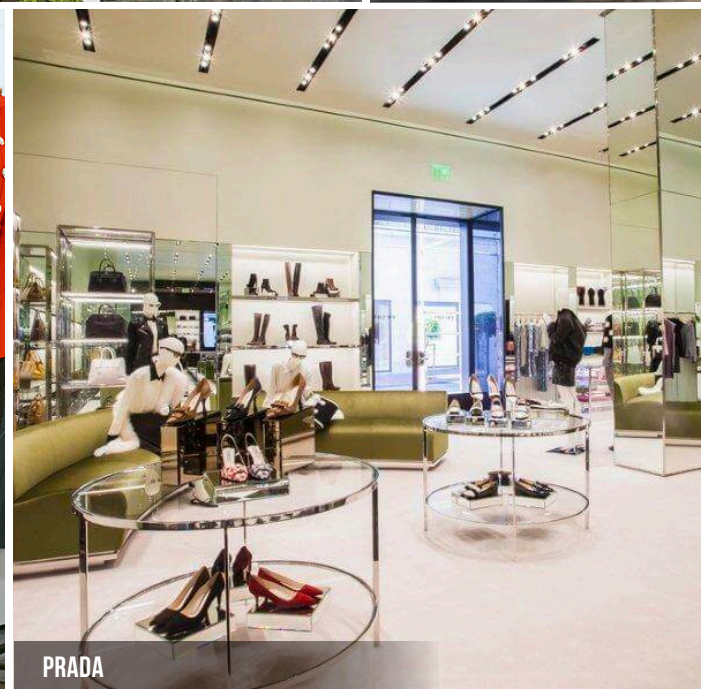
to Bay Bridge



25 MIN DRIVE

to SFO







VISIT [ELIOPOULOSGROUP.COM](https://eliopoulosgroup.com)