

Vacant Parcels | Pixley, CA

Property For Sale

1005 N Demaree Street
Visalia, California 93291
O | 559.754.3020
F | 559.429.4016
www.mdgre.com

GRAHAM | **& ASSOCIATES**

to learn more, visit: www.mdgre.com

Matt Graham
Lic# 01804235
Jim Abercrombie
Lic# 01917959

PROPERTY DETAILS

Address: South Side of Ave 96 (Terra Bella Avenue), West of Airport Street (Road 120) on the Westside of Pixley, in Tulare County

Parcels:

Parcel 3: 4.48 +/- Acres	195,234 +/- Sq. Ft.	314-270-003
Parcel 4: 3.35 +/- Acres	146,044 +/- Sq. Ft.	314-270-004
Parcel 5: 3.35 +/- Acres	146,032 +/- Sq. Ft.	314-270-005
Parcel 6: 3.29 +/- Acres	143,472 +/- Sq. Ft.	314-270-006
Parcel 7: 3.29 +/- Acres	143,472 +/- Sq. Ft.	314-270-007

Zoning M-1 | Light Manufacturing

Sales Price

Parcel 3: \$288,750.00
Parcels 4 & 5: \$231,000.00 Per Parcel
Parcels 6 & 7: \$225,750.00 Per Parcel

Additional Comments:

Raw land parcels available for sale in Pixley, California at what was formerly known as Harmon Field, the Pixley Airport. These lots would be ideal for industrial development. Located South of Tulare/Visalia and easily accessed from the 99 Freeway. Please call for further details.



Contact Broker:

Matt Graham
Lic# 01804235

to learn more, visit: www.mdgre.com

1005 N Demaree Street
Visalia, California 93291
O | 559.754.3020

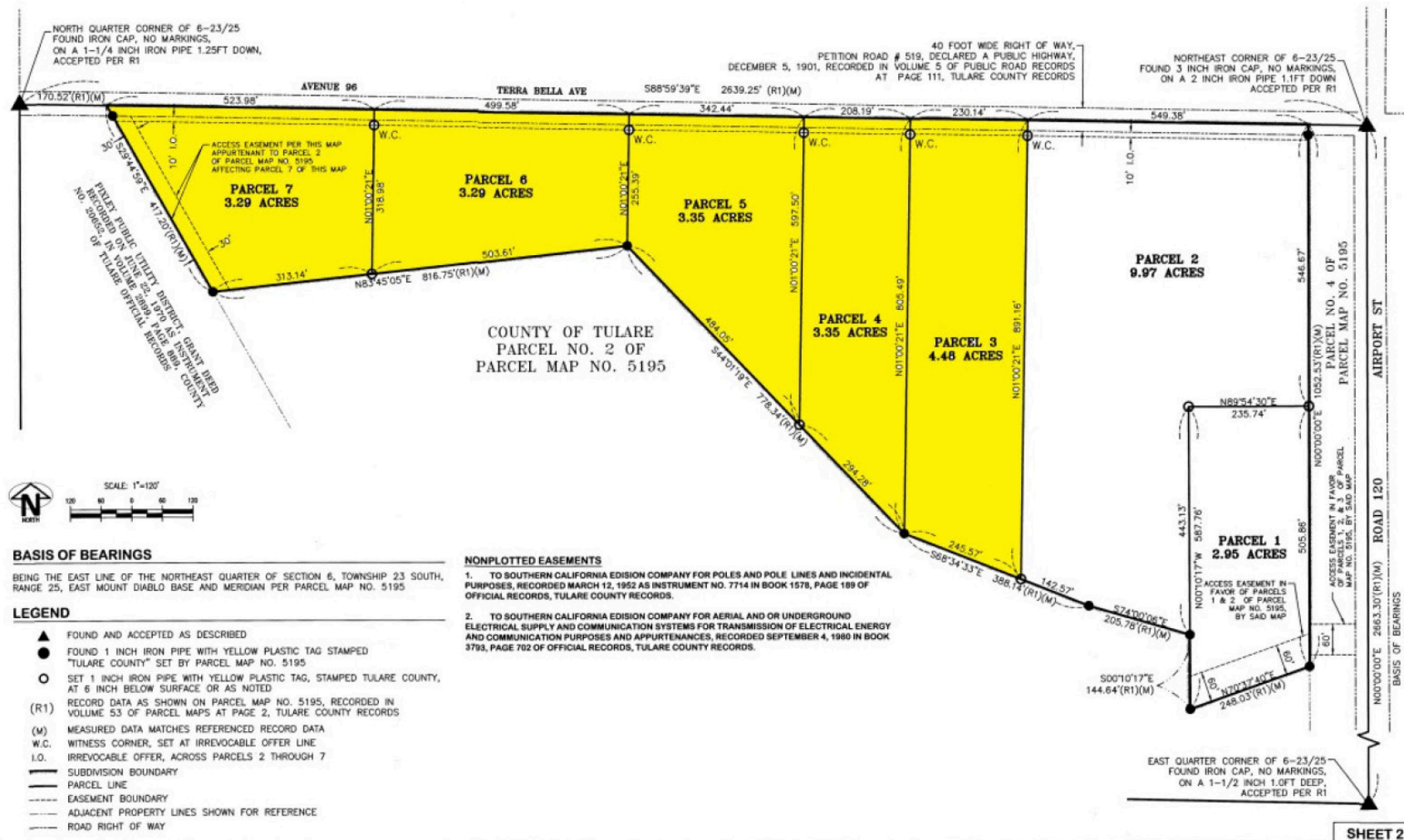
PLEASE NOTE: ALL INFORMATION AND REPRESENTATION MADE HEREIN, WHILE NOT GUARANTEED, HAVE BEEN SECURED FROM SOURCES WE BELIEVE TO BE RELIABLE, HOWEVER, THEY ARE NOT WARRANTED BY MATT GRAHAM & ASSOCIATES AND ARE SUBJECT TO CHANGE WITHOUT NOTICE.

SITE MAP



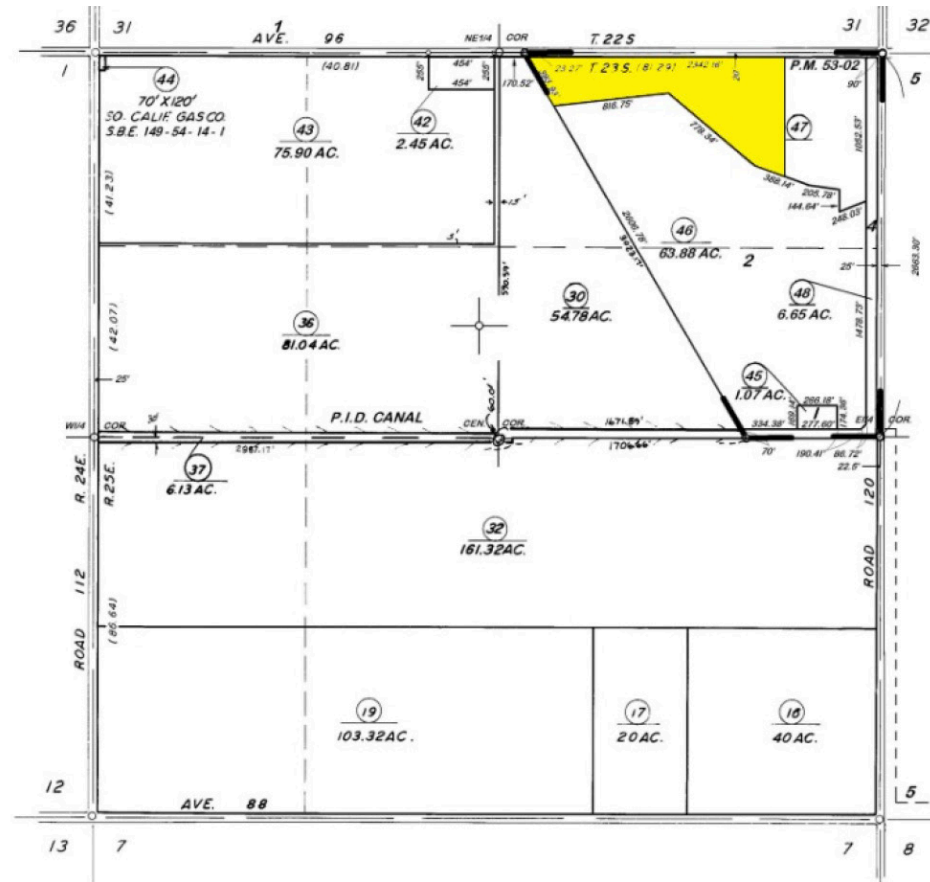
PLEASE NOTE: ALL INFORMATION AND REPRESENTATION MADE HEREIN, WHILE NOT GUARANTEED, HAVE BEEN SECURED FROM SOURCES WE BELIEVE TO BE RELIABLE, HOWEVER, THEY ARE NOT WARRANTED BY MATT GRAHAM & ASSOCIATES AND ARE SUBJECT TO CHANGE WITHOUT NOTICE.

TAX MAP



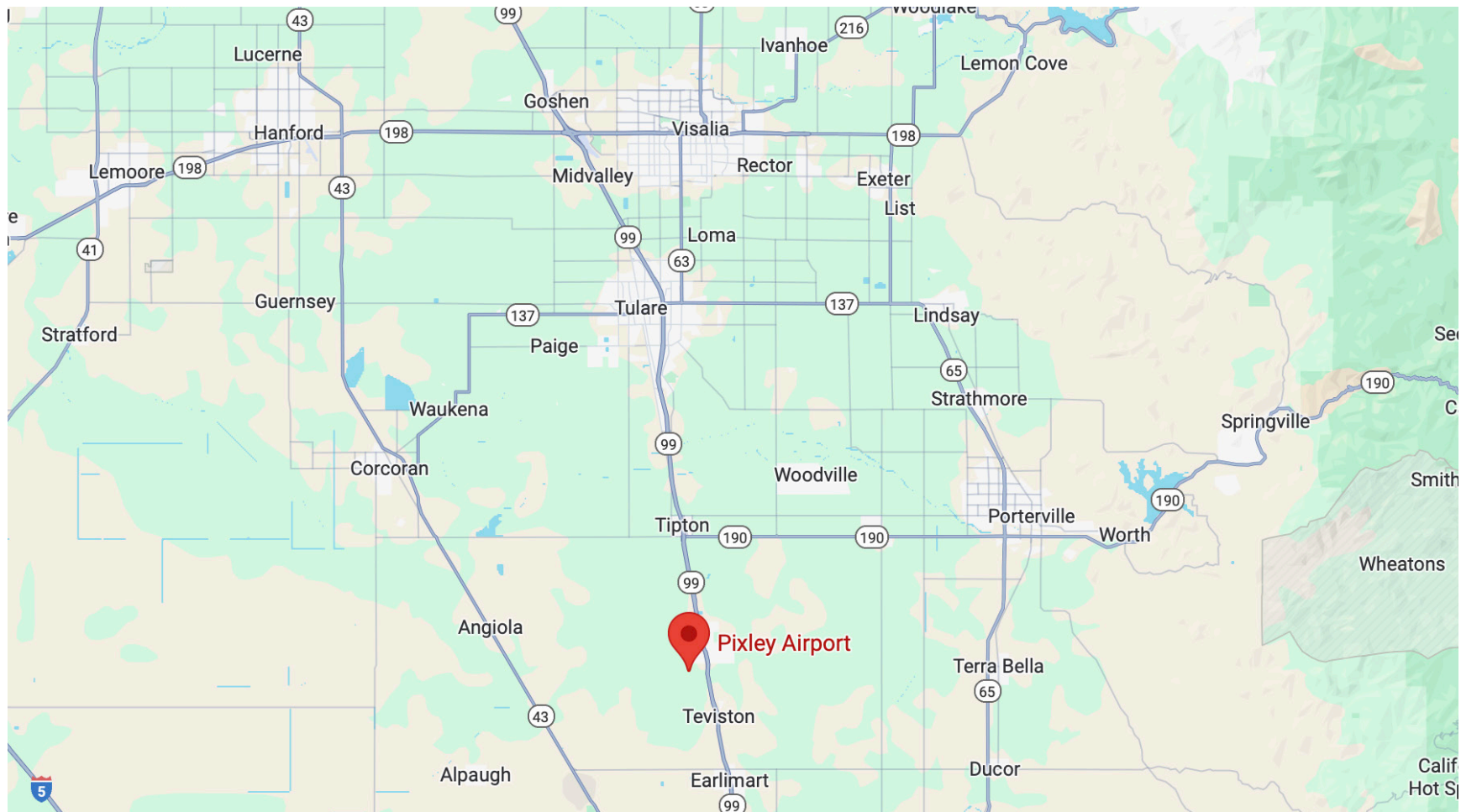
PLEASE NOTE: ALL INFORMATION AND REPRESENTATION MADE HEREIN, WHILE NOT GUARANTEED, HAVE BEEN SECURED FROM SOURCES WE BELIEVE TO BE RELIABLE, HOWEVER, THEY ARE NOT WARRANTED BY MATT GRAHAM & ASSOCIATES AND ARE SUBJECT TO CHANGE WITHOUT NOTICE.

TAX MAP



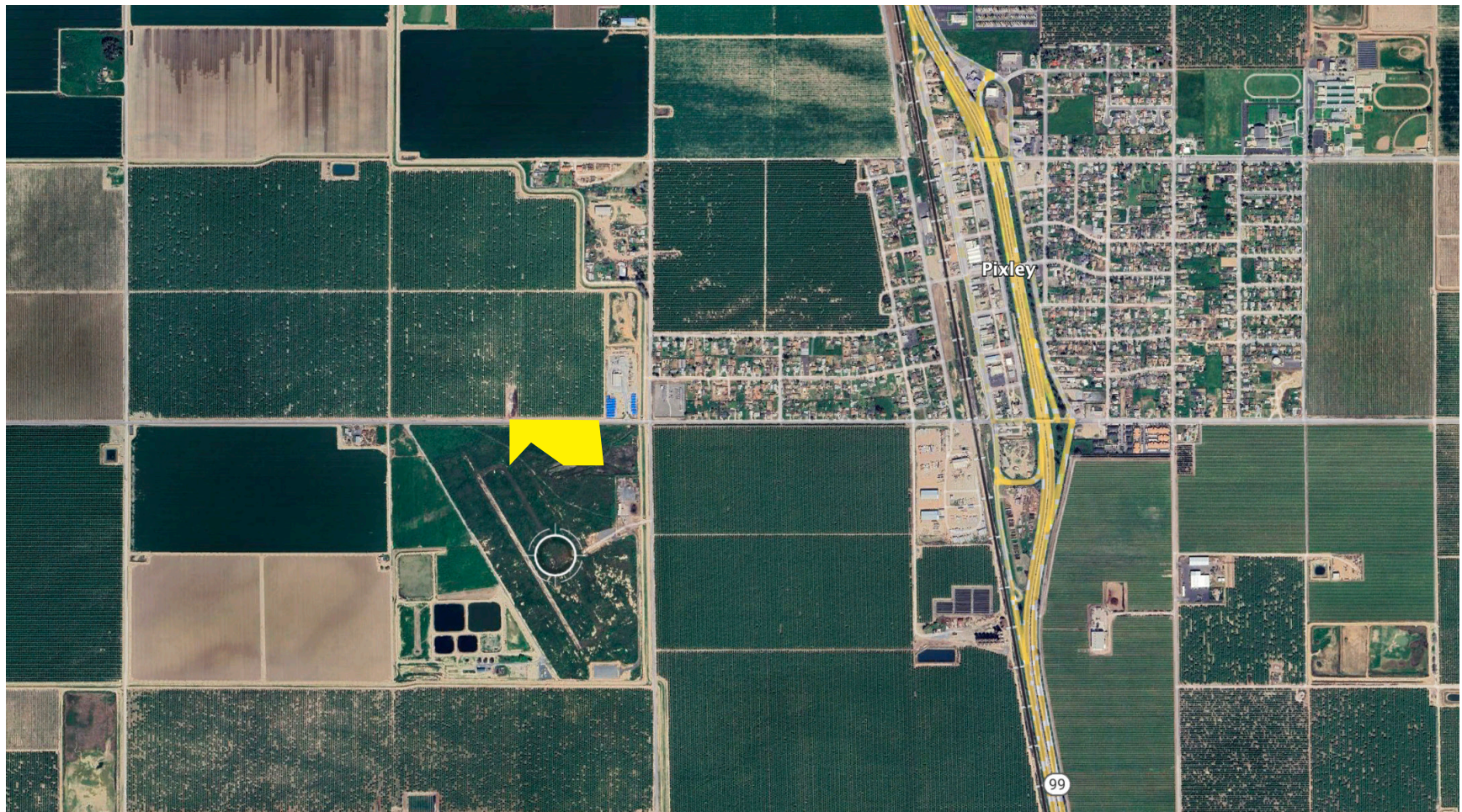
PLEASE NOTE: ALL INFORMATION AND REPRESENTATION MADE HEREIN, WHILE NOT GUARANTEED, HAVE BEEN SECURED FROM SOURCES WE BELIEVE TO BE RELIABLE, HOWEVER, THEY ARE NOT WARRANTED BY MATT GRAHAM & ASSOCIATES AND ARE SUBJECT TO CHANGE WITHOUT NOTICE.

LOCATION MAP



PLEASE NOTE: ALL INFORMATION AND REPRESENTATION MADE HEREIN, WHILE NOT GUARANTEED, HAVE BEEN SECURED FROM SOURCES WE BELIEVE TO BE RELIABLE, HOWEVER, THEY ARE NOT WARRANTED BY MATT GRAHAM & ASSOCIATES AND ARE SUBJECT TO CHANGE WITHOUT NOTICE.

PROPERTY LAYOUT



PLEASE NOTE: ALL INFORMATION AND REPRESENTATION MADE HEREIN, WHILE NOT GUARANTEED, HAVE BEEN SECURED FROM SOURCES WE BELIEVE TO BE RELIABLE, HOWEVER, THEY ARE NOT WARRANTED BY MATT GRAHAM & ASSOCIATES AND ARE SUBJECT TO CHANGE WITHOUT NOTICE.

PROPERTY PHOTOS

