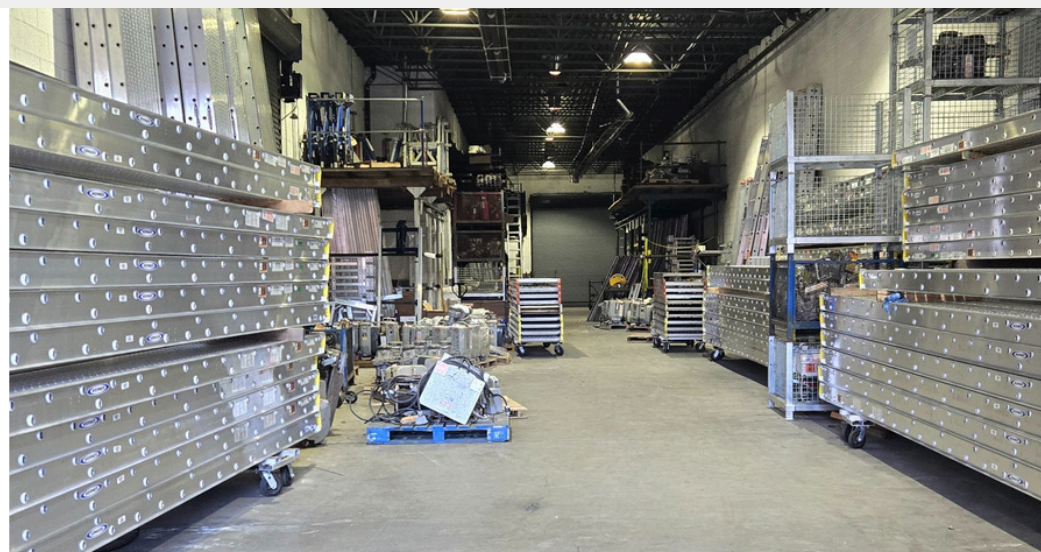
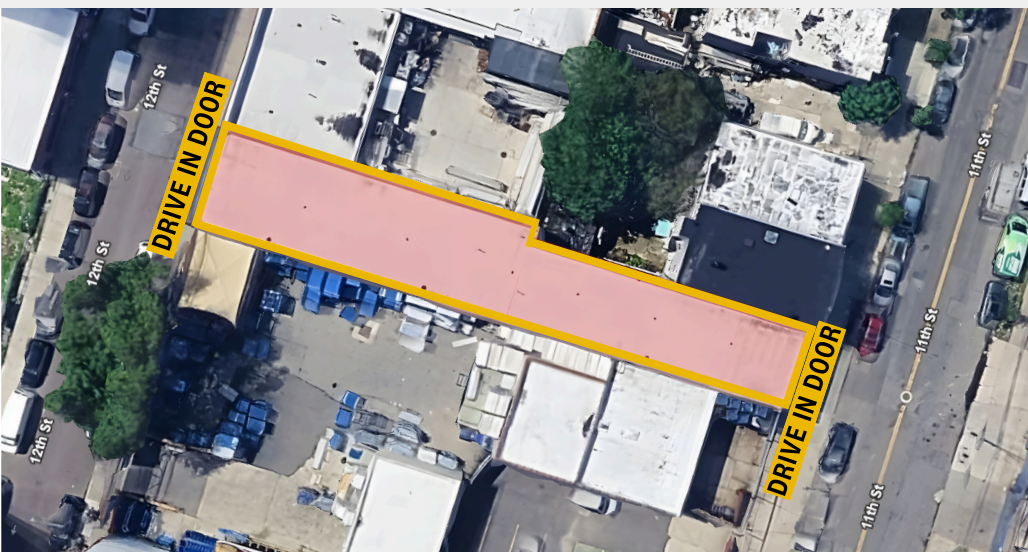


AVAILABLE FOR LEASE

GREINER-MALTZ
REAL ESTATE

5,250 SF HIGH CEILING WAREHOUSE IN LIC WITH 2 DRIVE INS

37-18 12th St, Long Island, NY 11101



PROPERTY DESCRIPTION

Located in the heart of Long Island City, this 5,250 SF industrial building offers a strategic position just minutes from the Queensboro Bridge, providing fast, direct access into Midtown Manhattan.

The property is about 200 FT long with two drive in gate on either side of 11th ST or 12th with the ability to drive thru from street to street . Zoned M1-3, the property features approx. 17' high ceiling and is ideal for distribution, production, or creative industrial users. This is a rare opportunity in a tightly held LIC corridor, properties this close to Manhattan move quickly.

PROPERTY HIGHLIGHTS

- Building Size: 5,250 SF
- Drive in Gates: 2
- Street to Street access
- High Ceiling: Approx 17'
- Electric: 200 AMPS
- Heat: Gas
- Zone: M1-3

CONTACT AGENT

EITAN HAKAMI

Associate Real Estate Broker

Direct: (917) 716-7751

ehakami@greiner-maltz.com

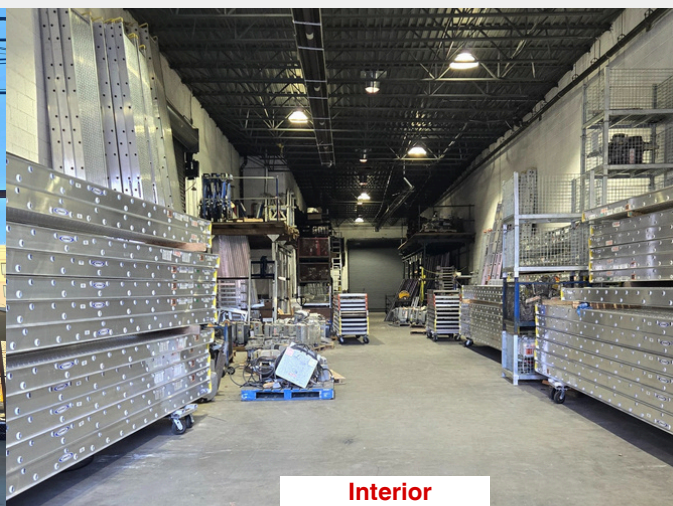
GREINER-MALTZ
REAL ESTATE

AVAILABLE FOR LEASE

GREINER-MALTZ
REAL ESTATE

5,250 SF HIGH CEILING WAREHOUSE IN LIC WITH 2 DRIVE INS

37-18 12th St, Long Island, NY 11101



CONTACT AGENT

EITAN HAKAMI

Associate Real Estate Broker

Direct: (917) 716-7751

ehakami@greiner-maltz.com

24-09 38TH AVENUE, LONG ISLAND CITY, NY 11101

+1 (718) 786-5050

GREINERMALTZ.COM

GREINER-MALTZ
REAL ESTATE

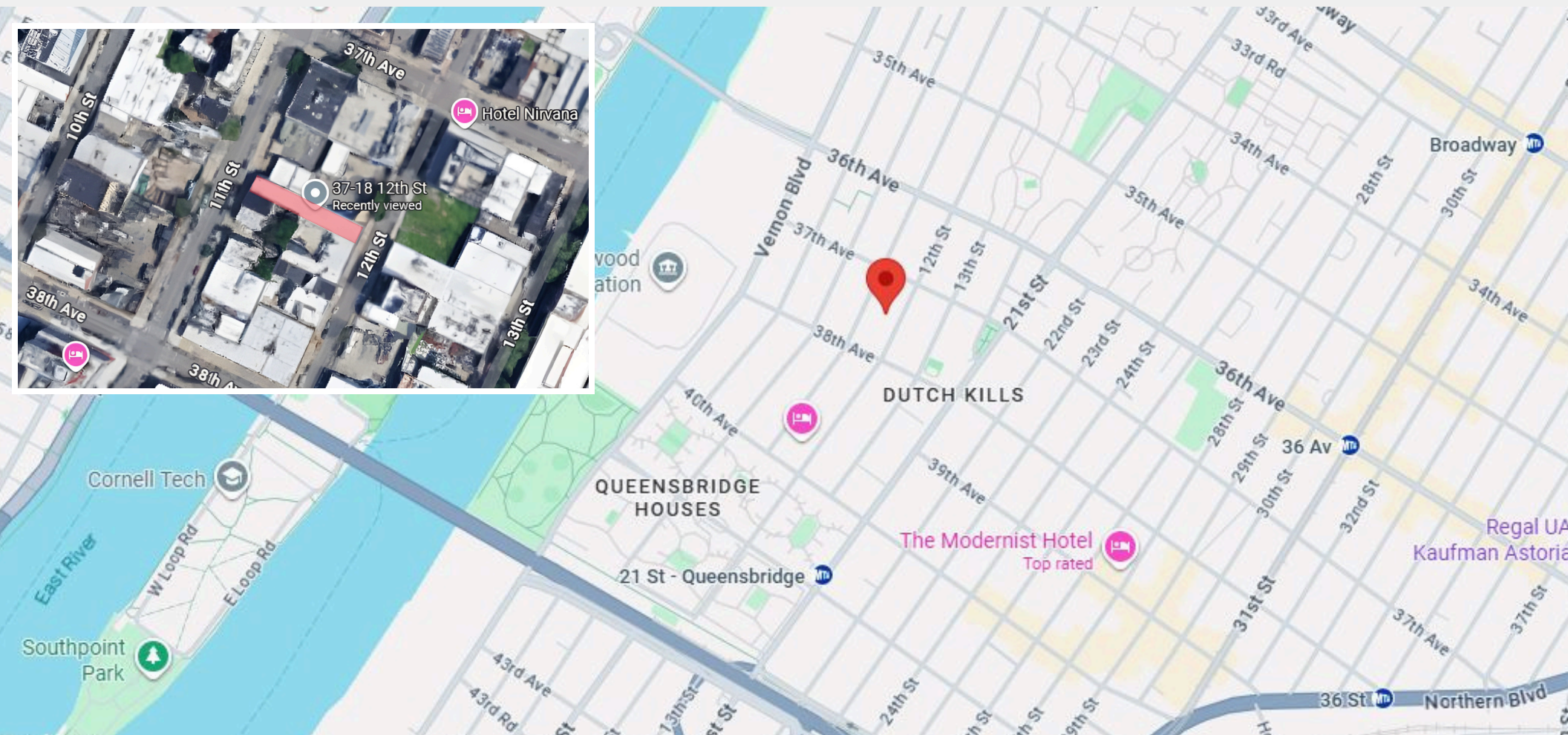
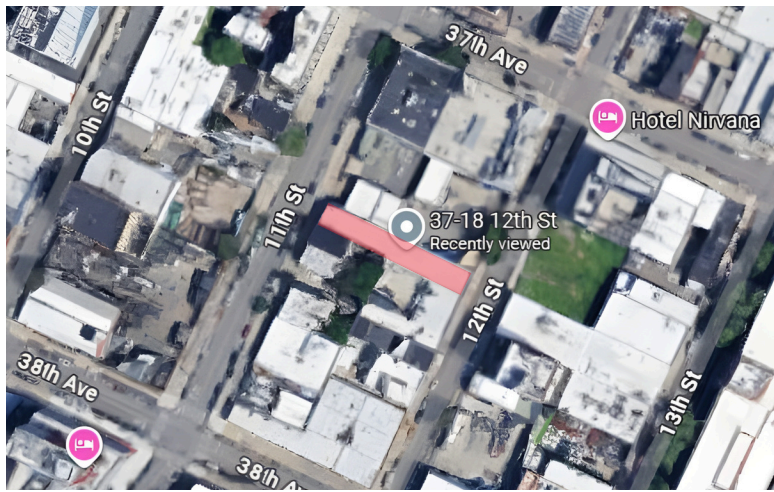
CREATING OPPORTUNITIES TOGETHER

AVAILABLE FOR LEASE

GREINER-MALTZ
REAL ESTATE

5,250 SF HIGH CEILING WAREHOUSE IN LIC WITH 2 DRIVE INS

37-18 12th St, Long Island, NY 11101



CONTACT AGENT

EITAN HAKAMI

Associate Real Estate Broker

Direct: (917) 716-7751

ehakami@greiner-maltz.com

GREINER-MALTZ
REAL ESTATE