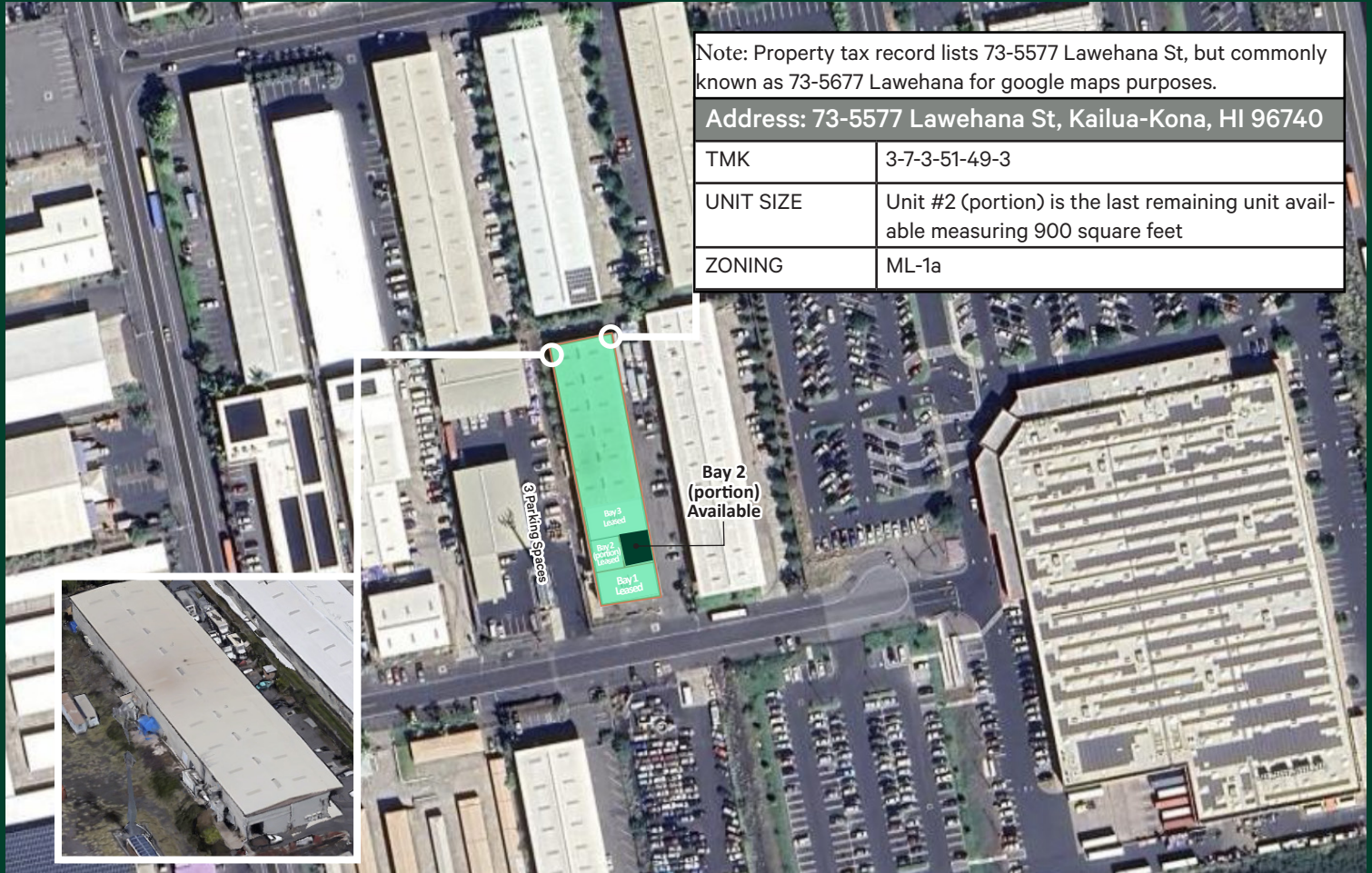


73-5577 Lawehana St

900 SF Warehouse Bay Available

73-5577 Lawehana St,
Kailua-Kona, HI 96740
www.cbre.com/hawaii



Note: Property tax record lists 73-5577 Lawehana St, but commonly known as 73-5677 Lawehana for google maps purposes.	
Address: 73-5577 Lawehana St, Kailua-Kona, HI 96740	
TMK	3-7-3-51-49-3
UNIT SIZE	Unit #2 (portion) is the last remaining unit available measuring 900 square feet
ZONING	ML-1a

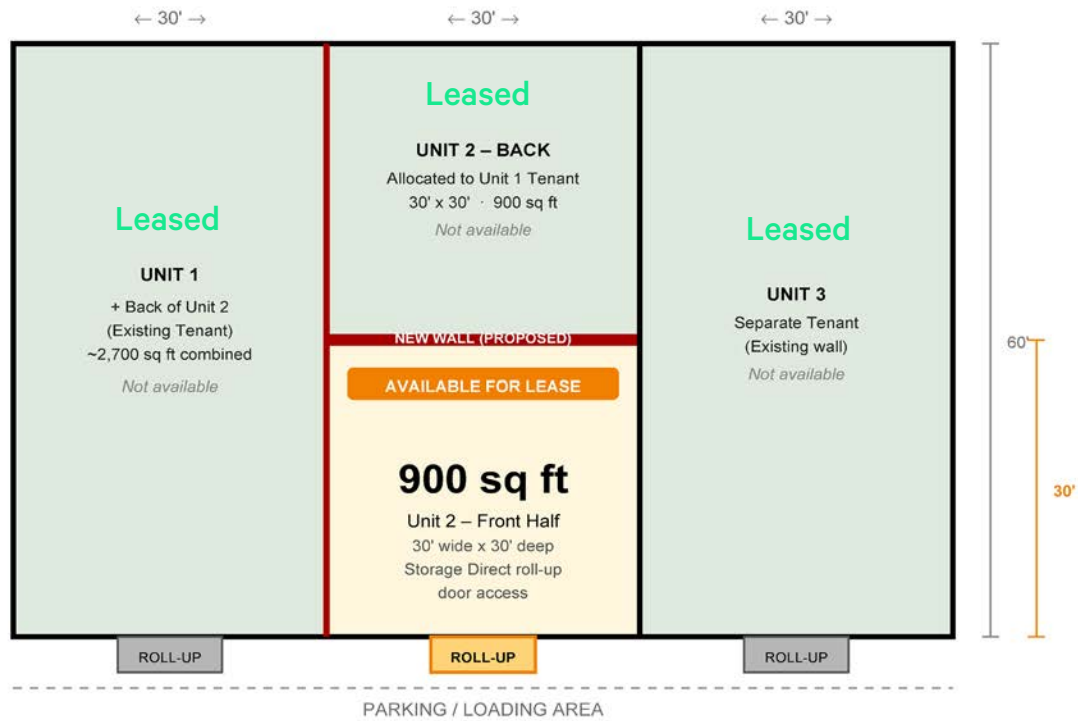
Property Overview

Address	73-5577 Lawehana St, Kailua-Kona, HI 96740		
Location	Kaloko Industrial Park in Kailua-Kona	Sprinklers	Yes
Available Unit	Unit 2 (portion)	Zoning	ML-1A
Date Available	Currently Vacant – Ready for Immediate Occupancy	Parking	One (1) parking stall
Unit Size	900 square feet	Base Rent	\$1,350 per month (\$1.50 / SF / MO)
Overhead Rollup Doors	One (1) overhead roll up door facing the parking lot	OPEX	\$125 per month (~\$0.14 / SF / MO)



Available Space – Unit 2 (Partial)

Industrial Warehouse · Kailua-Kona, Hawaii · For Lease



Legend:

- Available space (900 sq ft)
- Occupied / not available
- New wall (proposed)
- Existing wall

* Not to scale. Available space is the front 30' x 30' of Unit 2.



Contact us

Nicholas T. Adler
First Vice President
+1 808 859 0588
nicholas.adler@cbre.com
RS-78419

© 2026 CBRE, Inc. All rights reserved. This information has been obtained from sources believed reliable, but has not been verified for accuracy or completeness. You should conduct a careful, independent investigation of the property and verify all information. Any reliance on this information is solely at your own risk. CBRE and the CBRE logo are service marks of CBRE, Inc. All other marks displayed on this document are the property of their respective owners, and the use of such logos does not imply any affiliation with or endorsement of CBRE. Photos herein are the property of their respective owners. Use of these images without the express written consent of the owner is prohibited.

NA:RMP_ID49_73-5577LawehanaSt_06.29.26