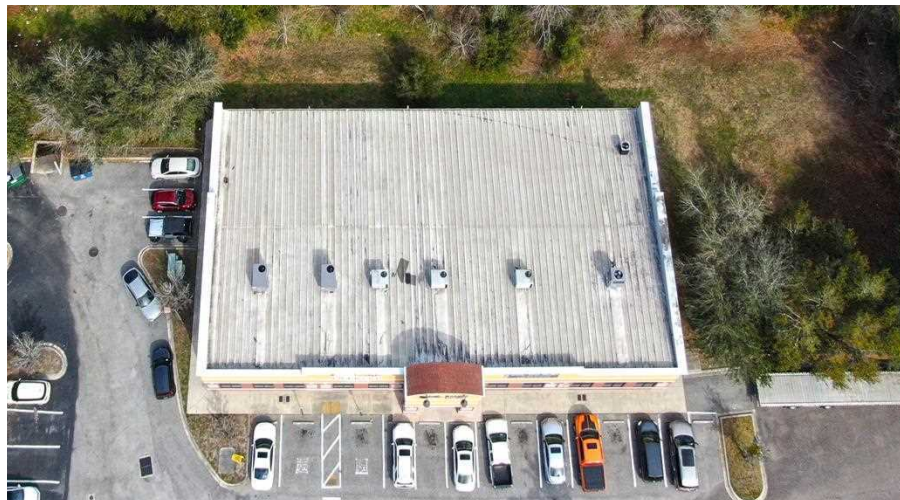




UF Health Anchored Medical Office

7645 Merrill Road, Jacksonville, FL 32277



Alan Zwass

Associate Director
904.467.3992
azwass@primerealtyinc.com

Brent Dennis

Director
904.930.4299
bdennis@primerealtyinc.com

Conrad Boylan

Director
904.515.2590
cboylan@primerealtyinc.com



Lease Details



Property Overview

Prime Realty presents this 2,400 SF vanilla shell space which is ready for custom tenant improvements. Electric and AC installations are complete and ready for use. This would be ideal for a variety of medical practices ready to join neighboring established medical caregivers. Join UF Health Primary Care at this medical center, located just minutes away from I-295, the Arlington Expressway and the Southside Connector. Centered between Publix and Wal-Mart on busy Merrill Road, this center has great visibility to over 39,000 vehicles per day.

Property Highlights

- UF Health Primary Care anchored medical center
- Pylon monument signage
- Zoned PUD
- 25 surface parking spaces
- Surrounded by multiple national retailers



Availability

Suite	Size	Lease Rate
Suite 102	2,400 SF	Negotiable, NNN

Additional Photos



Additional Photos

J & J Central Plaza Building 2 | 7645 Merrill Road, Jacksonville, FL 32277
All information has been gathered from sources deemed to be reliable. Provided information may be independently verified and shall not be solely relied upon.



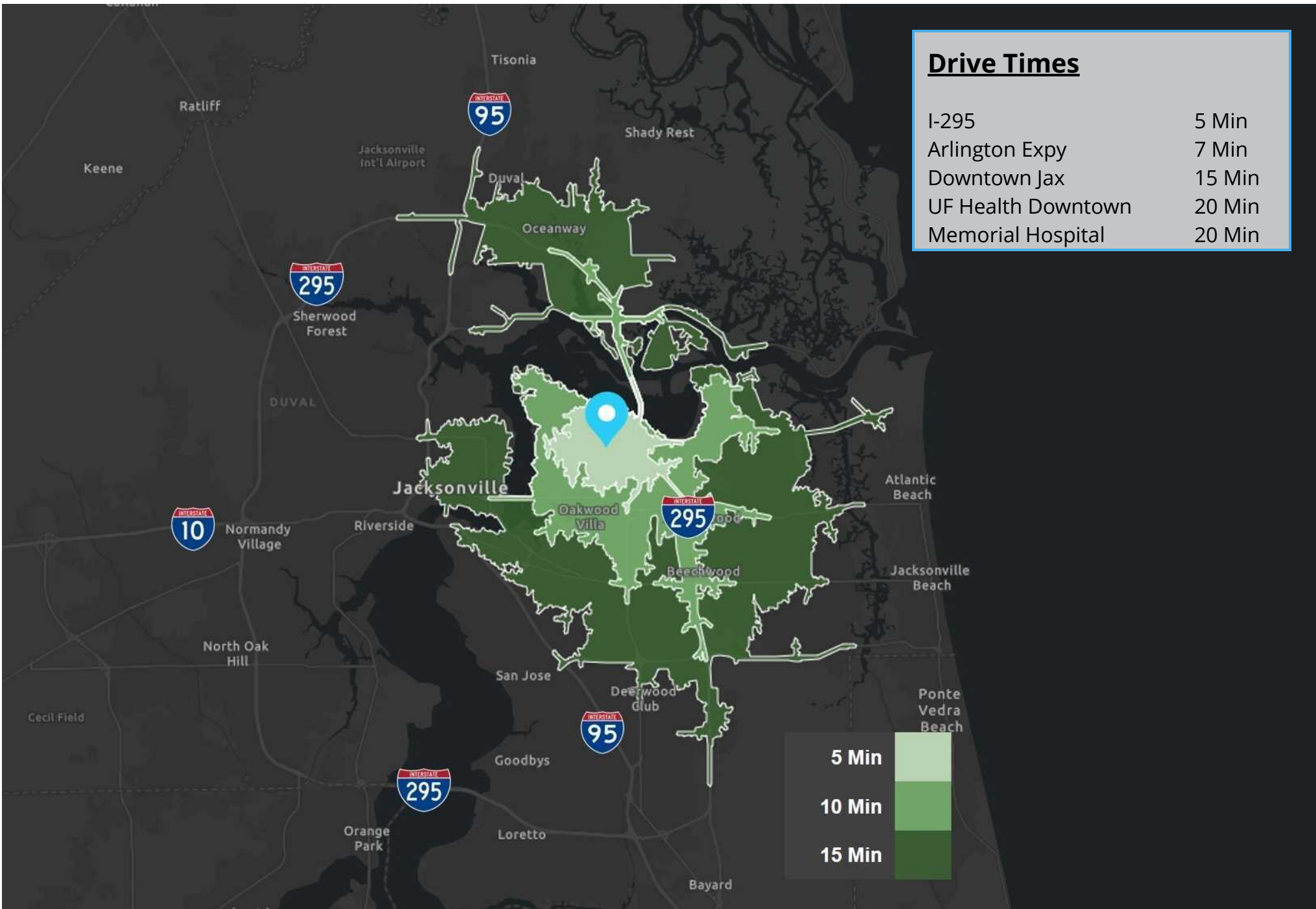
Nearby Tenants



Nearby Tenants

J & J Central Plaza Building 2 | 7645 Merrill Road, Jacksonville, FL 32277
All information has been gathered from sources deemed to be reliable. Provided information may be independently verified and shall not be solely relied upon.





Drive Times

J & J Central Plaza Building 2 | 7645 Merrill Road, Jacksonville, FL 32277
 All information has been gathered from sources deemed to be reliable. Provided information may be independently verified and shall not be solely relied upon.

