

For sale/lease

3500 West Industries Road
Richmond, IN 47374



Location

Richmond Indiana is situated in east-central Indiana, close to the Ohio border. This location provides easy access to major metropolitan areas like Indianapolis, Cincinnati, and Dayton.

Richmond is an appealing location for industrial businesses looking for a cost-effective location with good logistics and a supportive business environment.



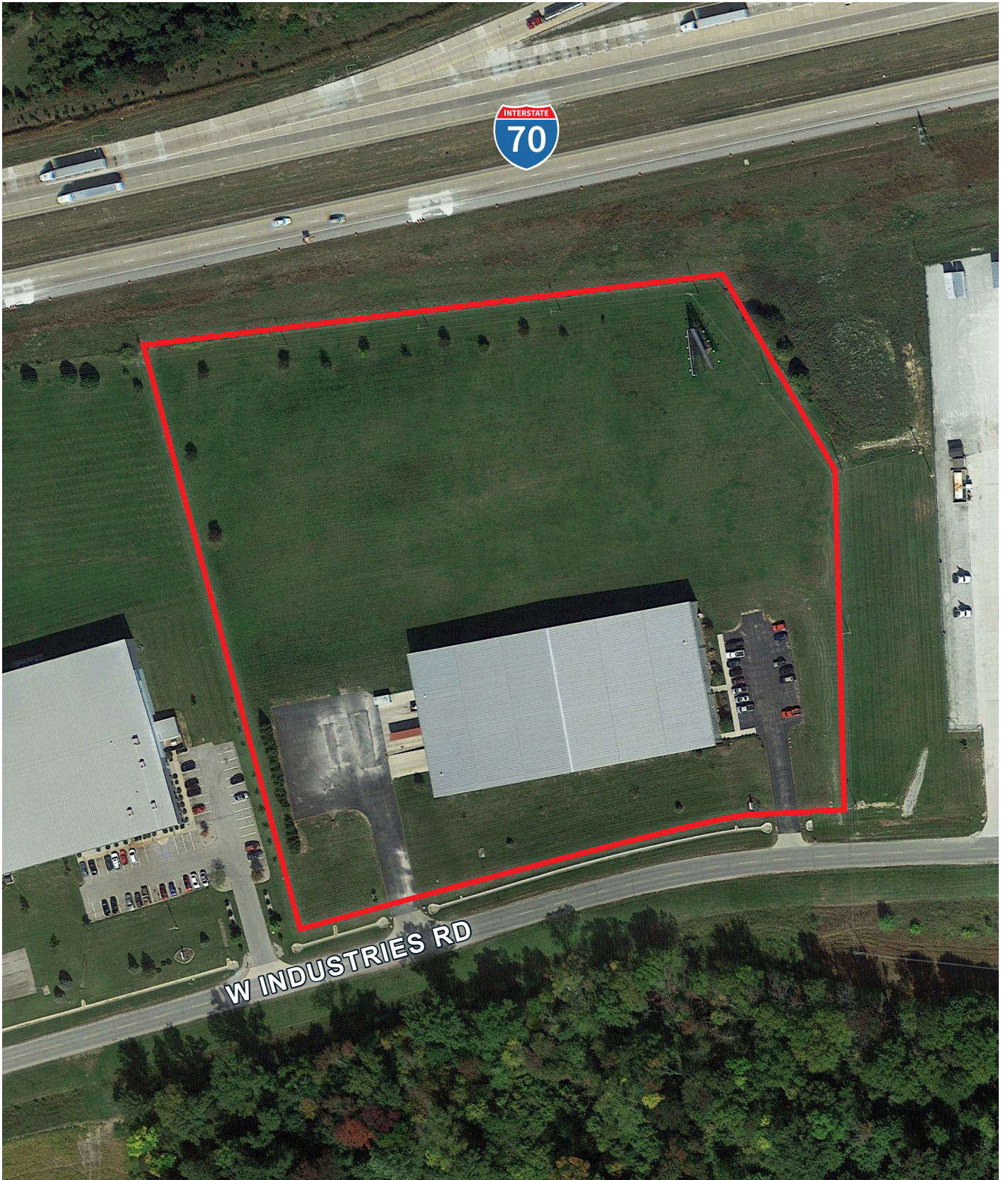
Property details

Building s.f.	45,000	Dock doors	4 (10' x 10')
Office s.f.	±1,000	Drive-in door	1 (14' x 14')
Building dimensions	300' x 150'	Speed bay	49'
Site size	8.77 acres	Mezzanine s.f.	±1,170
Year built	2002	Zoned	Light Warehouse
Clear height	23' - 30'	Fire system	Sprinklered
Auto parking	20		

Additional property images



Aerial view of 3500 W Industries Rd., Richmond, IN



One day drive from Richmond, IN



Distance to



1.5 miles



1.7 miles

Downtown Richmond 4.6 miles

Dayton, OH 51.1 miles

Indianapolis, IN 67.8 miles

Cincinnati, OH 78.4 miles

Abigail Sievers
Vice President
abigail.sievers@jll.com
+1 217 649 9820

Griffin Seitz
Associate
griffin.seitz@jll.com
+1 317 810 7175

Although information has been obtained from sources deemed reliable, JLL does not make any guarantees, warranties or representations, express or implied, as to the completeness or accuracy as to the information contained herein. Any projections, opinions, assumptions or estimates used are for example only. There may be differences between projected and actual results, and those differences may be material. JLL does not accept any liability for any loss or damage suffered by any party resulting from reliance on this information. If the recipient of this information has signed a confidentiality agreement with JLL regarding this matter, this information is subject to the terms of that agreement. ©2023 Jones Lang LaSalle IP, Inc. All rights reserved.

Location map



Distance to



1.5 miles



1.7 miles

Downtown Richmond 4.6 miles

Dayton, OH 51.1 miles

Indianapolis, IN 67.8miles

Cincinnati, OH 78.4 miles

Abigail Sievers
Vice President
abigail.sievers@jll.com
+1 217 649 9820

Griffin Seitz
Associate
griffin.seitz@jll.com
+1 317 810 7175

Although information has been obtained from sources deemed reliable, JLL does not make any guarantees, warranties or representations, express or implied, as to the completeness or accuracy as to the information contained herein. Any projections, opinions, assumptions or estimates used are for example only. There may be differences between projected and actual results, and those differences may be material. JLL does not accept any liability for any loss or damage suffered by any party resulting from reliance on this information. If the recipient of this information has signed a confidentiality agreement with JLL regarding this matter, this information is subject to the terms of that agreement. ©2023 Jones Lang LaSalle IP, Inc. All rights reserved.