

Colliers

For Lease

55 Jewelers Park Drive
Neenah, WI 54956

Contact us:

Michael Van Abel

Real Estate Advisor

+1 920 570 4653

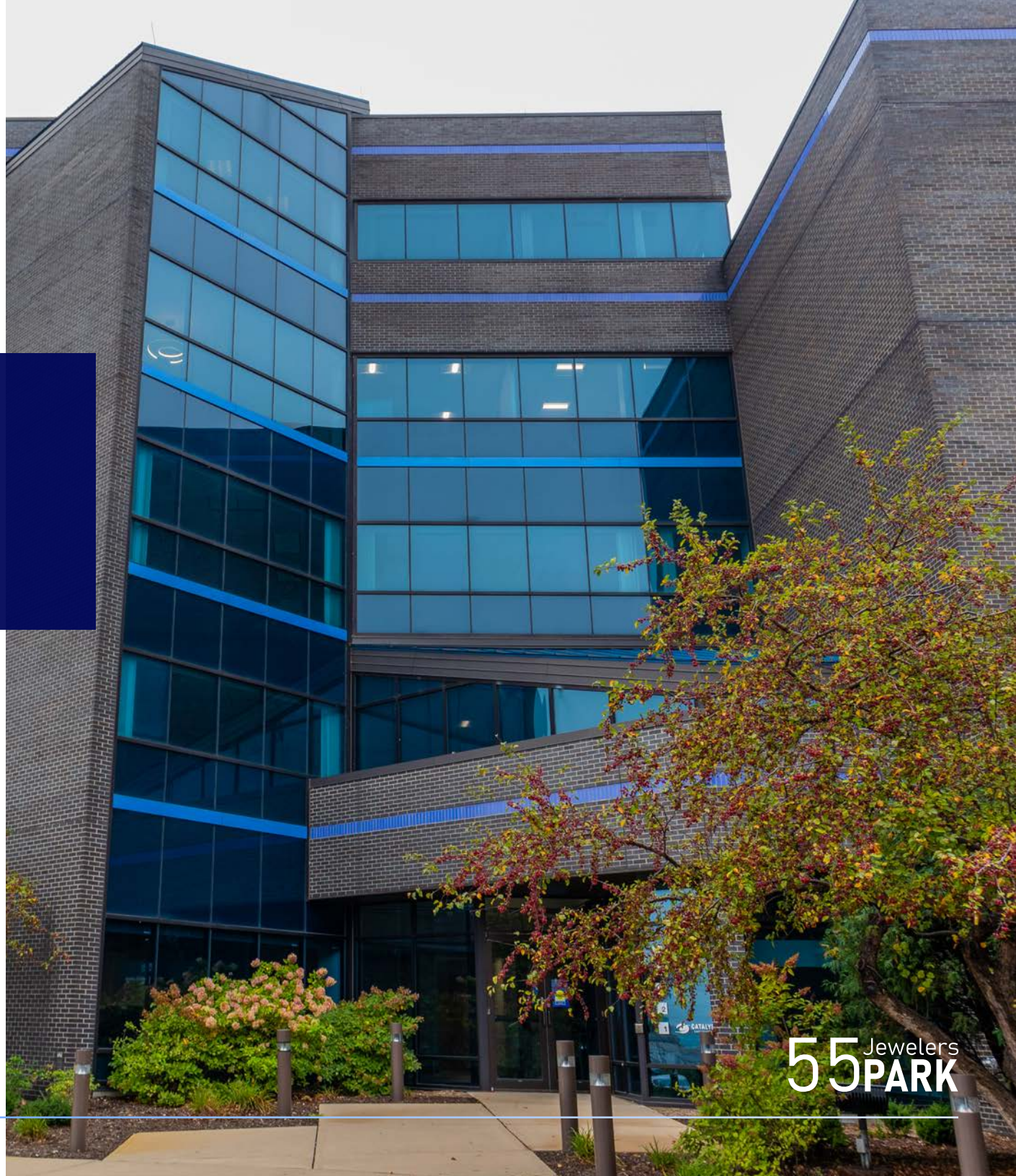
michael.vanabel@colliers.com

Mike Wanezek

Partner

+1 414 278 6826

mike.wanezek@colliers.com



55 Jewelers
PARK

Building Details

Class A office space, effortless highway access to I-41 and immense exposure through on-building signage.

55 Jewelers Park Drive was recently renovated in 2020, with an upscale modern lobby that includes a four-story atrium.

Each floor offers an incredible 360° window line, ensuring ample natural light and great views of the surrounding area. Centrally located in the heart of the Fox Valley, 55 Jewelers Park Drive is conveniently located for travel, access and visibility off the most traveled freeway in Wisconsin.

[Video Walkthrough](#)

Property Profile

Address	55 Jewelers Park Drive, Neenah, WI 54956
Renovated	2020
Building Size	93,671 RSF
Total Available	22,145 RSF
Stories	5 (five)
Lease Rate	\$14.00/SF NNN
Parking	268 Stalls, opportunity for expansion
Signage	On-building & monument signage available, 78,700 VPD on I-41 offers immense exposure
Loading	2 drive-ins, 1 dock <i>*Shipping & receiving bays not currently in use</i>
Flex/Storage Space	Lower Level (up to 11,486 SF Available) \$8.00/SF Gross

Campus Highlights



MODERN LOBBY



KEYLESS ENTRY



AMPLE
NATURAL LIGHT



EFFORTLESS
HIGHWAY ACCESS



ON-BUILDING &
MONUMENT SIGNAGE

- Current tenants include von Briesen & Roper, Catalyst Construction, R & R Insurance, Black Duck Partners, Hawkins Ash, and James Imaging
- Modern common area renovations create an upscale feel immediately upon entry
- Upscale design gives the building a campus feel while offering phenomenal 360° views and ample natural light
- Ideal location with plentiful parking and easy access to I-41

Visual Identity



UPSCALE MODERN LOBBY



HIGH CEILINGS & EXCELLENT GLASS LINE



FOUR STORY ATRIUM



PROMINENT MONUMENT



LARGE OPEN FLOOR PLATES

Location Overview

Visibility

Due to its prime location just off Interstate 41, the 55 Jewelers Park building offers a unique opportunity for branding and awareness marketing through on-building signage.

Highway Access

55 Jewelers Park Drive offers convenient access and accessibility to the entire state via Interstate 41.

Distance to Key Areas

Downtown Appleton	13 minutes 10 miles
Appleton International Airport	14 minutes 10 miles
Oshkosh	14 minutes 11 miles
Fond du Lac	35 minutes 33 miles
Green Bay	40 minutes 39 miles
Downtown Milwaukee	1 hour 30 minutes 98 miles
Mitchell International Airport	1 hour 35 minutes 105 miles



78,700 VPD via Interstate 41, on-building signage highly visible from highway

Building Layout

Plentiful natural light, large open floor plates and endless build-out possibilities.



Fourth Floor

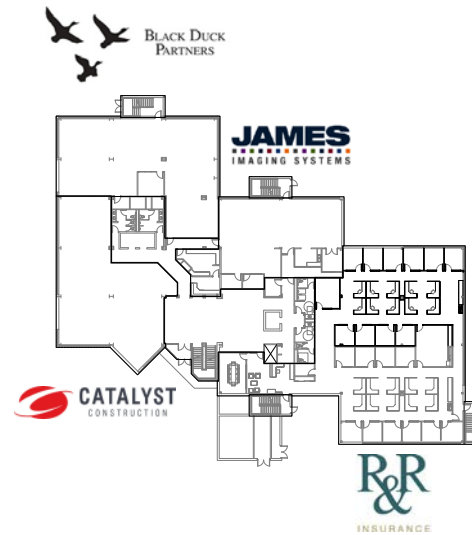
Example full floor build-out

von Briesen

von Briesen & Roper, s.c. | Attorneys at Law

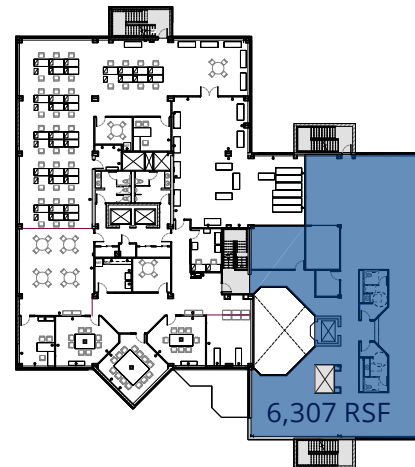
First Floor

Fully Leased



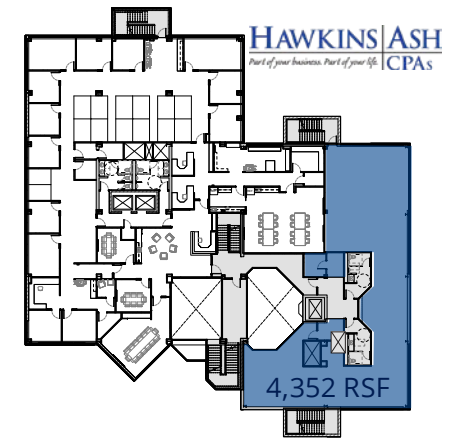
Third Floor

6,307 RSF Available



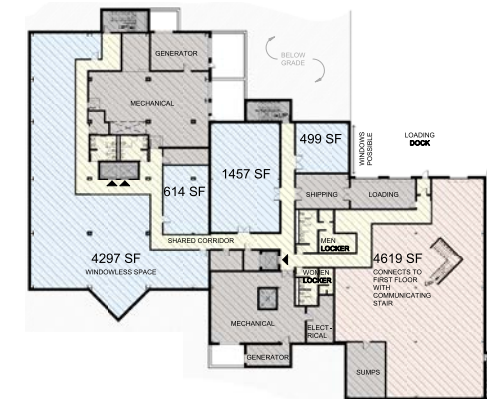
Second Floor

Minimum 4,352 RSF Available



Lower Level

2,000 - 11,486 RSF Flex Space Available



Contact us

Michael Van Abel

Real Estate Advisor

+1 920 570 4653

michael.vanabel@colliers.com

Mike Wanezek

Partner

+1 414 278 6826

mike.wanezek@colliers.com

Colliers | Wisconsin

4321 W College Ave, Suite 260

Appleton, WI 54914

+1 920 739 5300

55 Jewelers
PARK

Presented by:



In collaboration with:



This document has been prepared by Colliers International for advertising and general information only. Colliers International makes no guarantees, representations or warranties of any kind, expressed or implied, regarding the information including, but not limited to, warranties of content, accuracy and reliability. Any interested party should undertake their own inquiries as to the accuracy of the information. Colliers International excludes unequivocally all inferred or implied terms, conditions and warranties arising out of this document and excludes all liability for loss and damages arising there from. This publication is the copyrighted property of Colliers International and/or its licensor(s). ©2025. All rights reserved.

Prior to negotiating on your behalf the Brokerage firm, or an agent associated with the firm, must provide you the following disclosure statement:

Broker Disclosure to Customers

You are a customer of the brokerage firm (hereinafter Firm). The Firm is either an agent of another party in the transaction or a subagent of another firm that is the agent of another party in the transaction. The broker or a salesperson acting on behalf of the Firm may provide brokerage services to you. Whenever the Firm is providing brokerage services to you, the Firm and its brokers and salespersons (hereinafter Agents) owe you, the customer, the following duties:

- The duty to provide brokerage services to you fairly and honestly.
- The duty to exercise reasonable skill and care in providing brokerage services to you.
- The duty to provide you with accurate information about market conditions with a reasonable time if you request it, unless disclosure of the information is prohibited by law.
- The duty to disclose to you in writing certain Material Adverse Facts about a property, unless disclosure of the information is prohibited by law.
- The duty to protect your confidentiality. Unless the law requires it, the Firm and its Agents will not disclose your confidential information or the confidential information to other parties.
- The duty to safeguard trust funds and other property held by the Firm or its Agents.
- The duty, when negotiating, to present contract proposals in an objective and unbiased manner and disclose the advantages and disadvantages of the proposals.

Please review this information carefully. An Agent of the Firm can answer your questions about brokerage services, but if you need legal advice, tax advice or a professional home inspection contact an attorney, tax advisor, or home inspector. This disclosure is required by section 452.135 of the Wisconsin statutes and is for information only. It is a plain-language summary of the duties owed to a customer under section 452.133 (1) of the Wisconsin statutes.

Confidentiality Notice to Customers

The Firm and its Agents will keep confidential any information given to the Firm and its Agents in confidence, or any information obtained by the Firm and its Agents that a reasonable person would want to be kept confidential, unless the information must be disclosed by law or you authorize the Firm to disclose particular information. The Firm and its Agents shall continue to keep the information confidential after the Firm is no longer providing brokerage services to you. The following information is required to be disclosed by law:

1. Material Adverse Facts, as defined in section 452.01 (5g) of the Wisconsin Statutes.
2. Any facts known by the Firm or its Agents that contradict any information included in a written inspection report on the property or real estate that is the subject of the transaction.

To ensure that the Firm and its Agents are aware of what specific information you consider confidential, you may list that information below, or provide that information to the Firm and its Agents by other means. At a later time, you may also provide the Firm and its Agents with other information you consider to be confidential.

Confidential information: _____

Non-Confidential information: (The following information may be disclosed by the Firm and its Agents): _____
(Insert information you authorize to be disclosed, such as financial qualification information.)

Definition of Material Adverse Facts

A "Material Adverse Fact" is defined in Wis. Stat 452.01 (5g) as an Adverse Fact that a party indicates is of such significance, or that is generally recognized by a competent licensee as being of such significance to a reasonable party, that it affects or would affect the party's decision to enter into a contract or agreement concerning a transaction or affects or would affect the party's decision about the terms of such a contract or agreement.

An "Adverse" fact is defined in Wis. Stat. 452.01 (1e) as a condition or occurrence that a competent licensee generally recognizes will significantly and adversely affect the value of the property, significantly reduce the structural integrity of improvements to real estate, or present a significant health risk to occupants of the property; or information that indicates that a party to a transaction is not able to or does not intend to meet his or her obligations under a contract or agreement made concerning the transaction.

Sex Offender Registry

Notice: You may obtain information about the sex offender registry and persons registered with the registry by contacting the Wisconsin Department of Corrections on the Internet at <http://offender.doc.state.wi.us/public/>