

FOR SALE

±9,910 SF Warehouse

6035 S Adams St, Tacoma, WA

 **JLL** SEE A BRIGHTER WAY

Asking price \$2,475,000



Alec Goodwin

Associate Broker

Alec.Goodwin@jll.com

(424) 421-9245

Bill Honsaker

Sr. Managing Director

Bill.Honsaker@jll.com

(602) 369-6797

jll.com

Jones Lang LaSalle Brokerage, Inc.

Aerial View

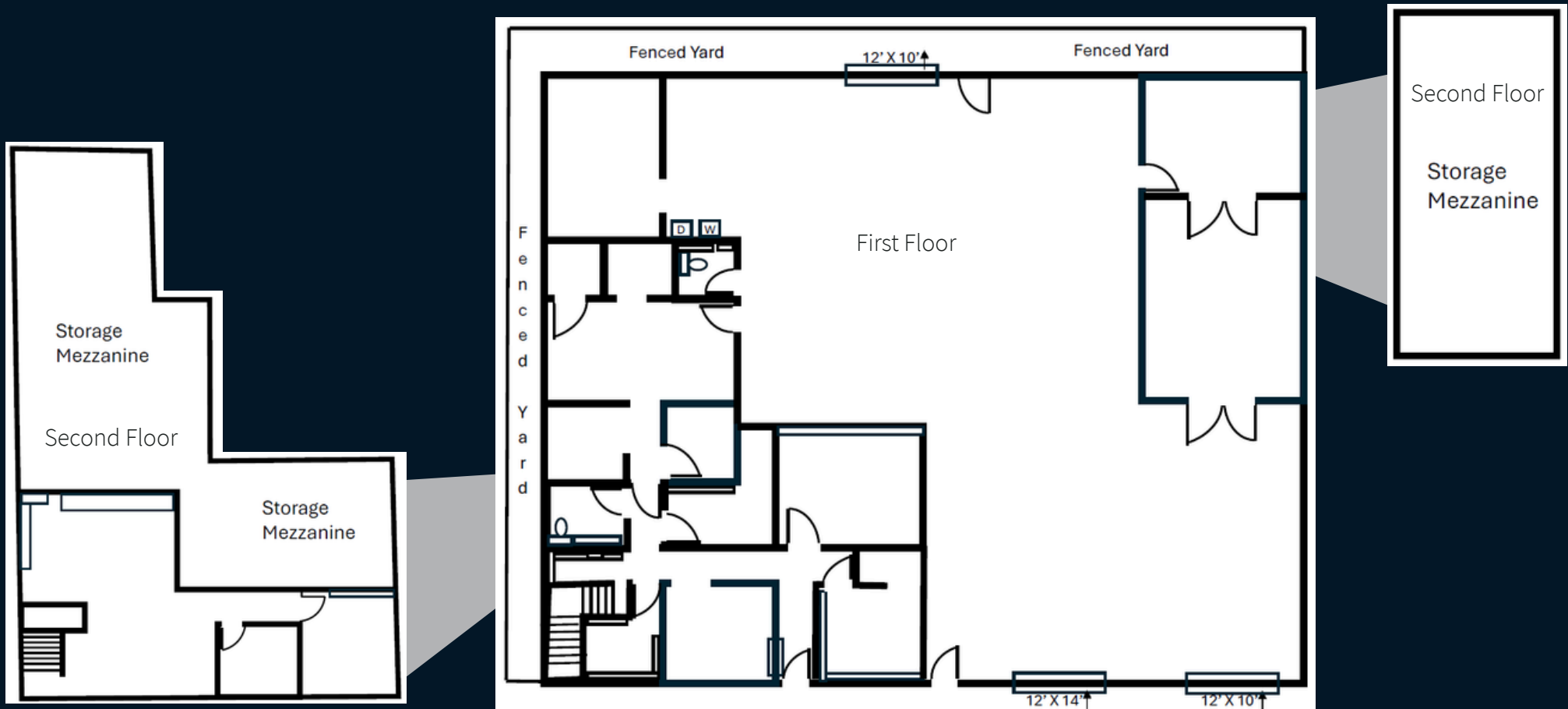


Property Specifications

- ±9,910 total SF available
- ±3,590 SF Warehouse
- ±3,344 SF Office (2 story)
- ±773 SF Storage
- ±2,203 SF Mezzanine storage
- ±21,358 SF of Land
- ±18' clear height
- 3 Grade-level doors
 - (1) 12'W x 14'H
 - (2) 12'W x 10'H
- Power: 400 amps, 120/208, 3-phs
- ±1,500 SF Rear paved yard area

Floor Plans

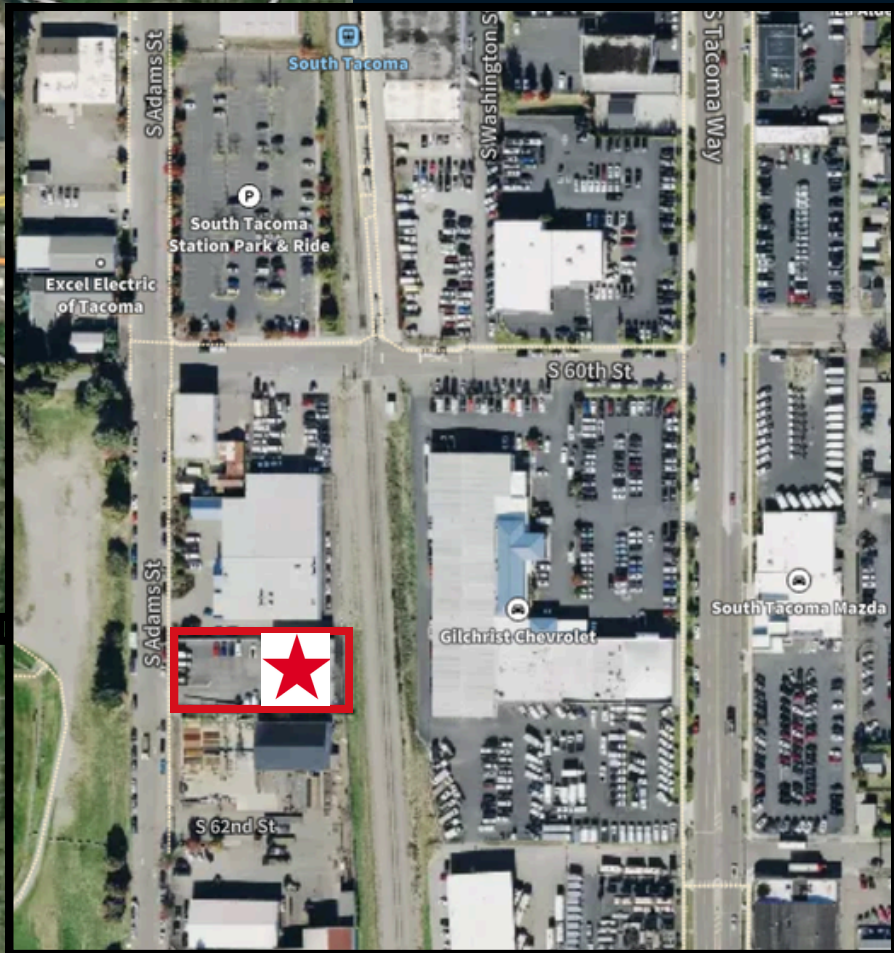
- ±3,590 SF Warehouse
- ±3,344 SF Office (2 story)
- ±773 SF Storage
- ±2,203 SF Mezzanine storage



Property Highlights

- Central location with easy access to I-5
- Zoned M2 - Heavy Industrial
- 5 minute walk to South Tacoma Rail Station
- 20 minute drive to Port of Tacoma
- Parcel Numbers:
 - 3270000030
 - 3270000020
 - 3270000050





Alec Goodwin
Associate Broker
Alec.Goodwin@jll.com
(424) 421-9245

Bill Honsaker
Sr. Managing Director
Bill.Honsaker@jll.com
(602) 369-6797