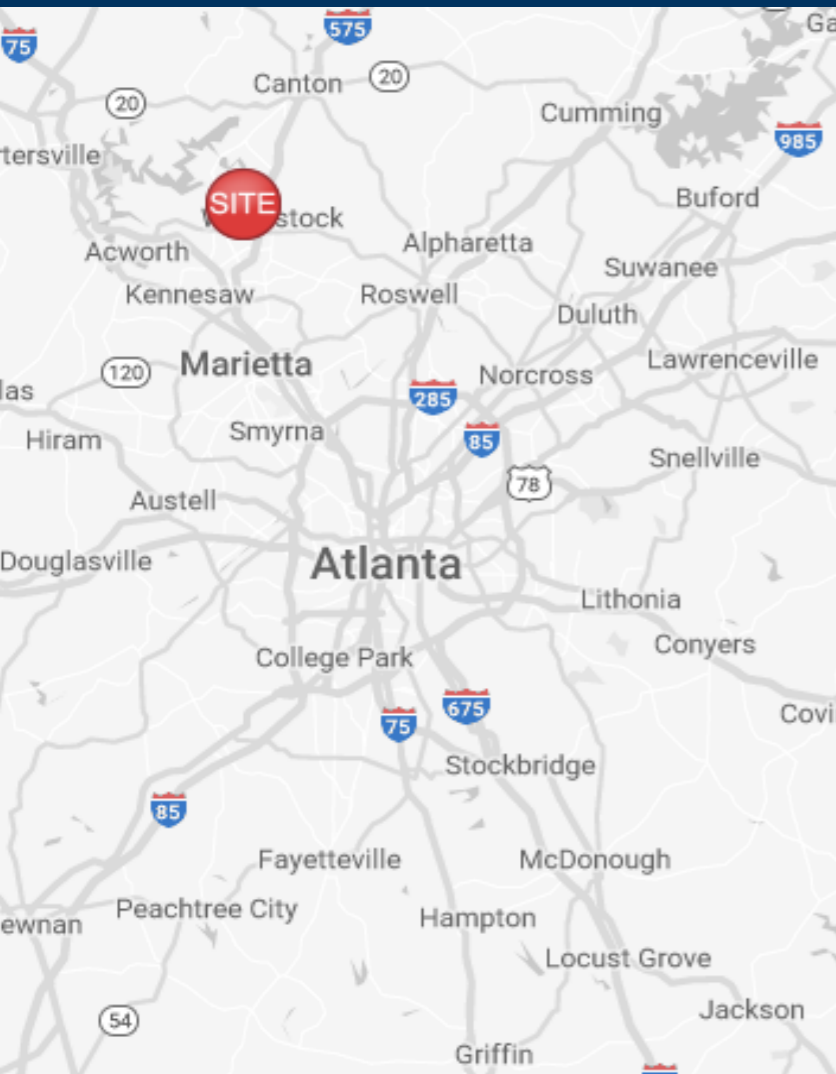


# The Plaza at Towne Lake

2370 Towne Lake Pkwy  
Woodstock, GA 30189



## Leasing Contacts

Allie Hodge Motz  
678-501-5342  
[ahodge@riverwoodproperties.com](mailto:ahodge@riverwoodproperties.com)

Lexi Parks  
770-955-7660  
[lexi@riverwoodproperties.com](mailto:lexi@riverwoodproperties.com)

[riverwoodproperties.com](http://riverwoodproperties.com)

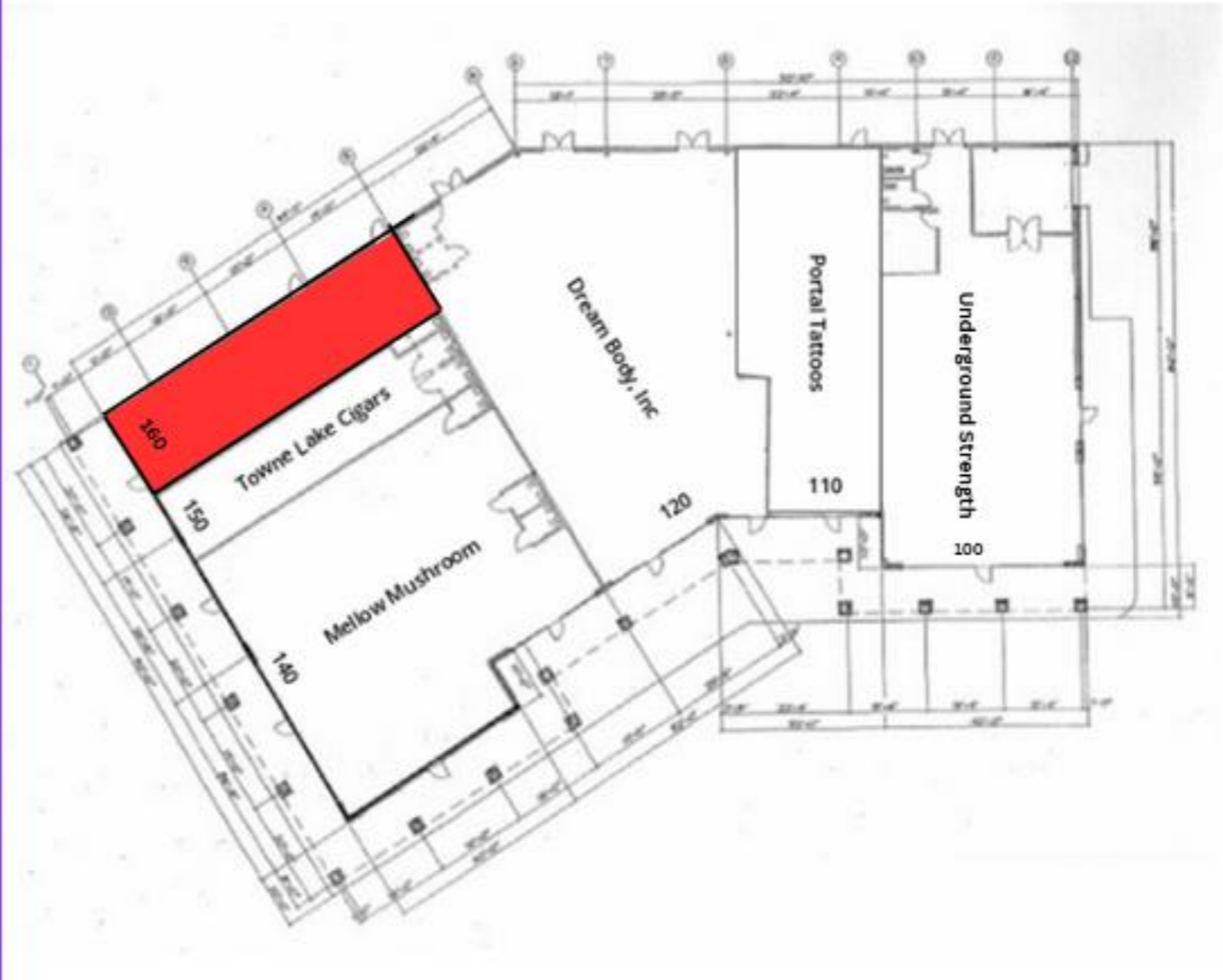
## Property Highlights

- Woodstock is the epicenter and heartbeat of fast-growing Cherokee County which is home to an estimated 280,000 affluent residents.
- Originally build in 2000, this attractive center has been well-kept and vigilantly maintained by the current owners for 15-years.
- the center is well-positioned to attract guests with ample parking, signage, visibility and convenient ingress/egress. Nearby Kroger is one of their top performing stores and schools nearby draws shoppers from Towne Lake Parkway (44,800 VPD traffic count).
- The center occupies a 2.71 +/-acre site with 84 parking spaces (5.5 per 1,000 s.f.).
- Zoned C3 | Commercial
- Retail/ Office Space for Lease | 1,200 SF

# The Plaza at Towne Lake

## TENANTS

100	Underground Strength	3,155 SF
110	Portal Tattoos	1,715 SF
120	Twisted Cycle	3,940 SF
140	Mellow Mushroom	3,500 SF
150	Towne Lake Cigars	940 SF
160	Retail Space Available	1,200 SF
GLA:		14,450 SF
Availability:		1,200 SF



# AREA DEMOGRAPHICS



2023  
Population

1 MILE	9,812
3 MILE	66,292
5 MILE	161,545



2023 Daytime  
Population

1 MILE	2,872
3 MILE	25,944
5 MILE	49,133



Household 2023

1 MILE	3,390
3 MILE	24,542
5 MILE	60,063



Household  
Income

1 MILE	\$157,494
3 MILE	\$120,285
5 MILE	\$126,503



## THE PLAZA AT TOWNE LAKE

*Trade Area Overview*



RIVERWOOD