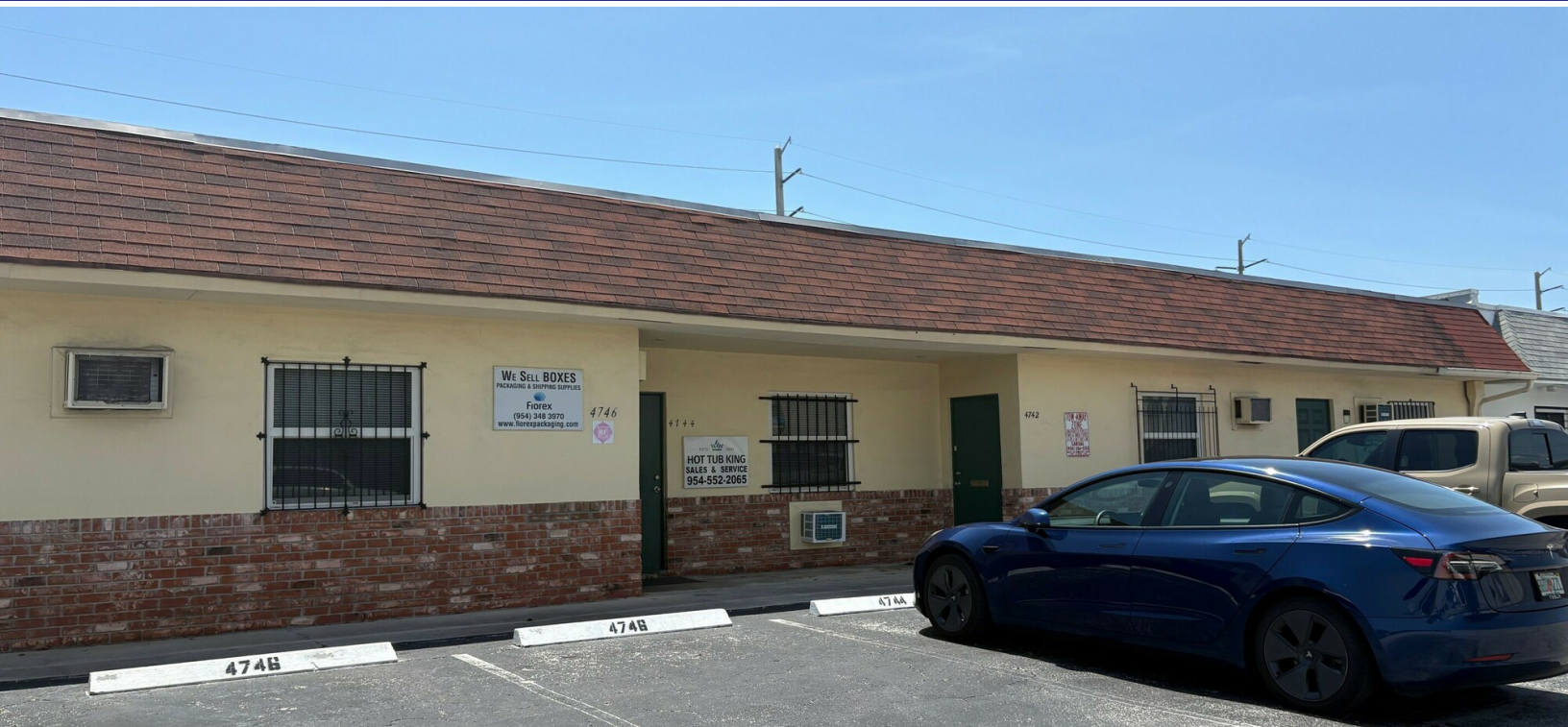


GREATOAKS PROPERTIES

4700 -4754 NE 12 AVE, OAKLAND PARK, FL 33334

PROPERTY SUMMARY

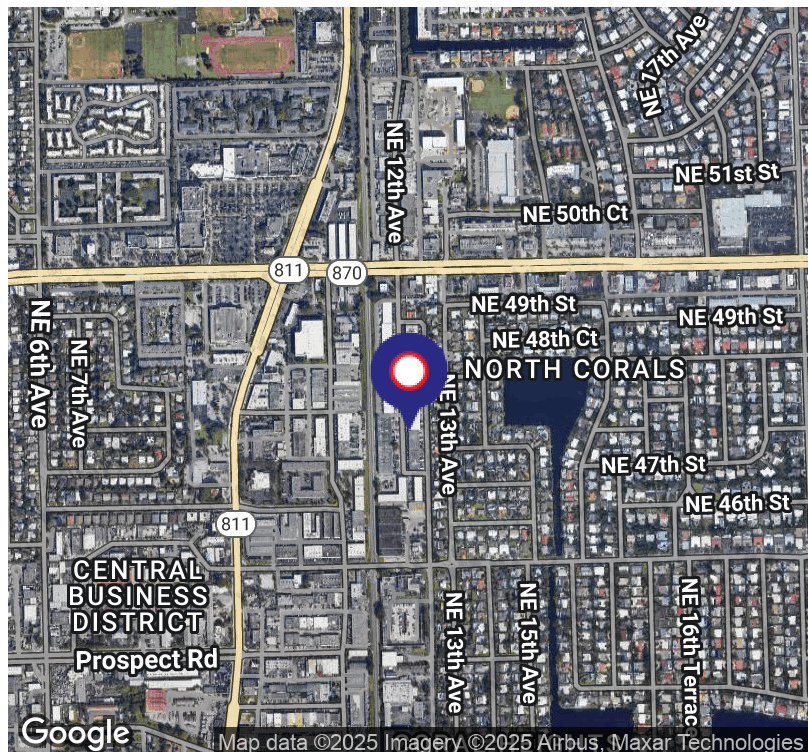


PROPERTY DESCRIPTION

The Greatoaks property is a well located 20,000 SF multi-tenant industrial small bay warehouse complex. Located one block east of Dixie Highway and three blocks south of Commercial Boulevard in the heart of Oakland Park. These small bay warehouses have offices that face West on NE 12th Ave with the 10' x 10' bays in the back facing East on NE 12th Terrace. Built in 1969, the property has 15 small bay warehouse units ranging in size from 1,200 SF to 2,600 SF. All bays have private restrooms; air-conditioned offices and some bays have full central air-conditioning, 12' clear ceilings, and 6 dedicated parking spaces with some in the front and some in the rear. Zoned B-3 for Commercial Industrial.

PROPERTY HIGHLIGHTS

- 15 small bay warehouse
- 10' x 10' grade level overhead doors
- 12' clear ceilings in warehouse
- 6 dedicated parking spaces for each unit
- Unit sizes range from 1,200 SF to 2,600 SF
- All offices are air-conditioned
- Bays are in the rear of the units
- Some units are fully air-conditioned



HALEY PRESSER

Property Manager / Sales Associate
Direct: 954.485.9200 | Cell: 954.254.5396
haley@levyrai.com

ANGIE WEAVER

Lauderdale Lakes and Lauderdale Manager
Direct: 954.485.9200 | Cell: 917.645.2339
angie@levyrai.com

JOSH LEVY

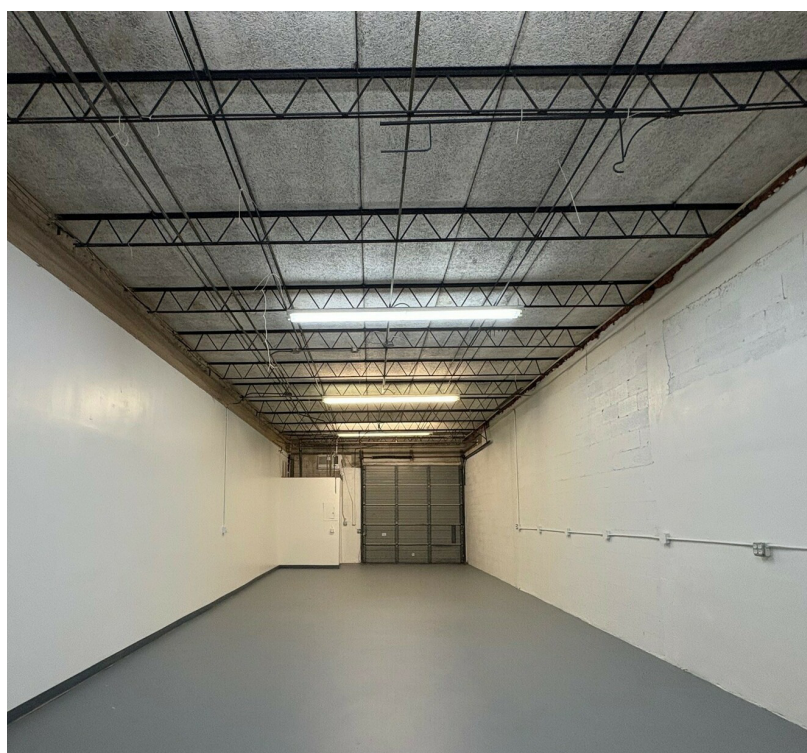
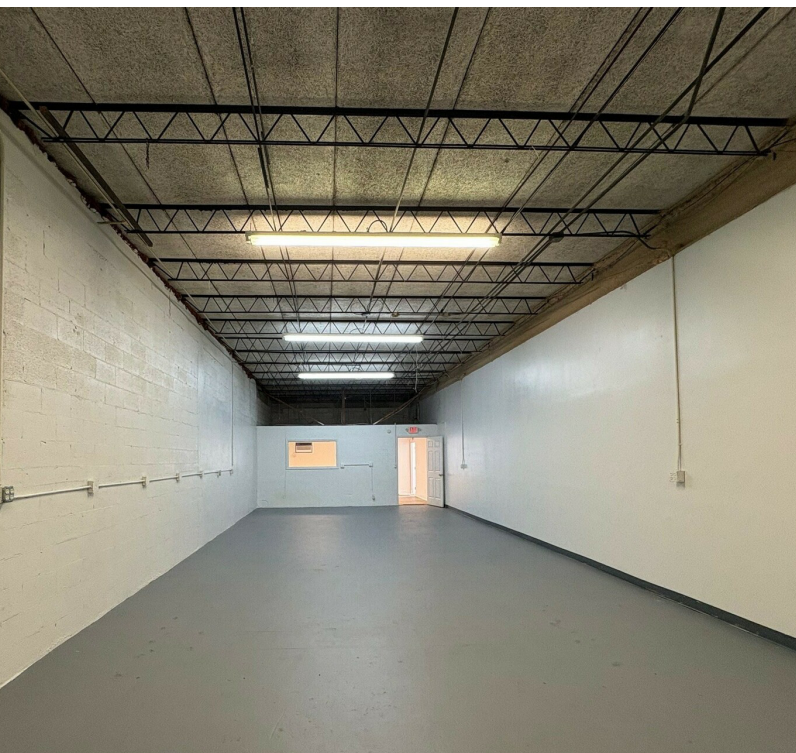
Chief Operating Officer
954.491.5505
josh@levyrai.com



GREATOAKS PROPERTIES

4700 -4754 NE 12 AVE, OAKLAND PARK, FL 33334

ADDITIONAL PHOTOS



HALEY PRESSER

Property Manager / Sales Associate
Direct: 954.485.9200 | Cell: 954.254.5396
Haley@levyrai.com

ANGIE WEAVER

Lauderdale Lakes and Lauderdale Manager
Direct: 954.485.9200 | Cell: 917.645.2339
angie@levyrai.com

JOSH LEVY

Chief Operating Officer
954.491.5505
josh@levyrai.com

