

EAST INDUSTRIAL BAY



Mike Smith

Principal

mikesmith1@lee-associates.com

925-737-4151

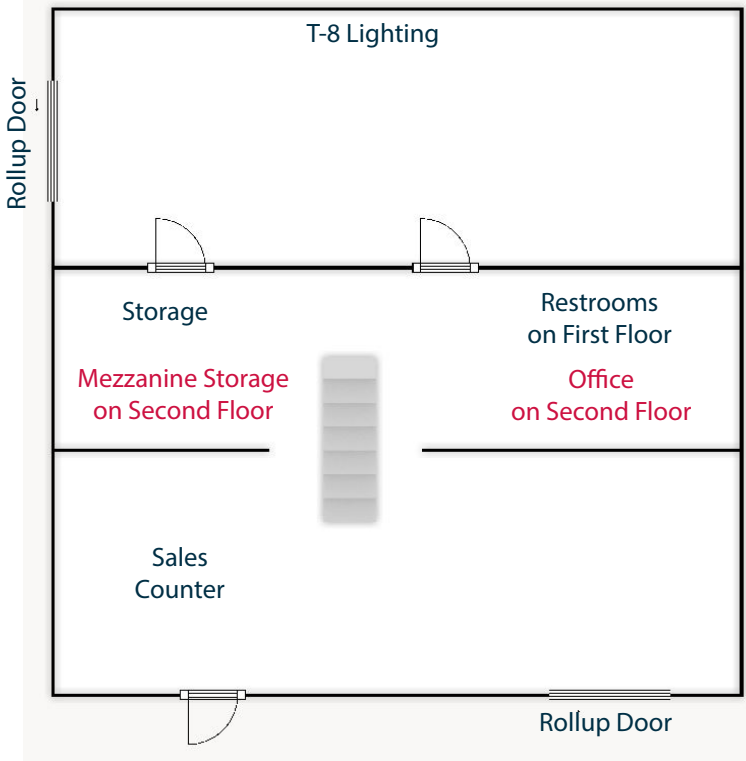
LIC NO 00837386

FOR LEASE ±2,000 SF WARHOUSE/OFFICE

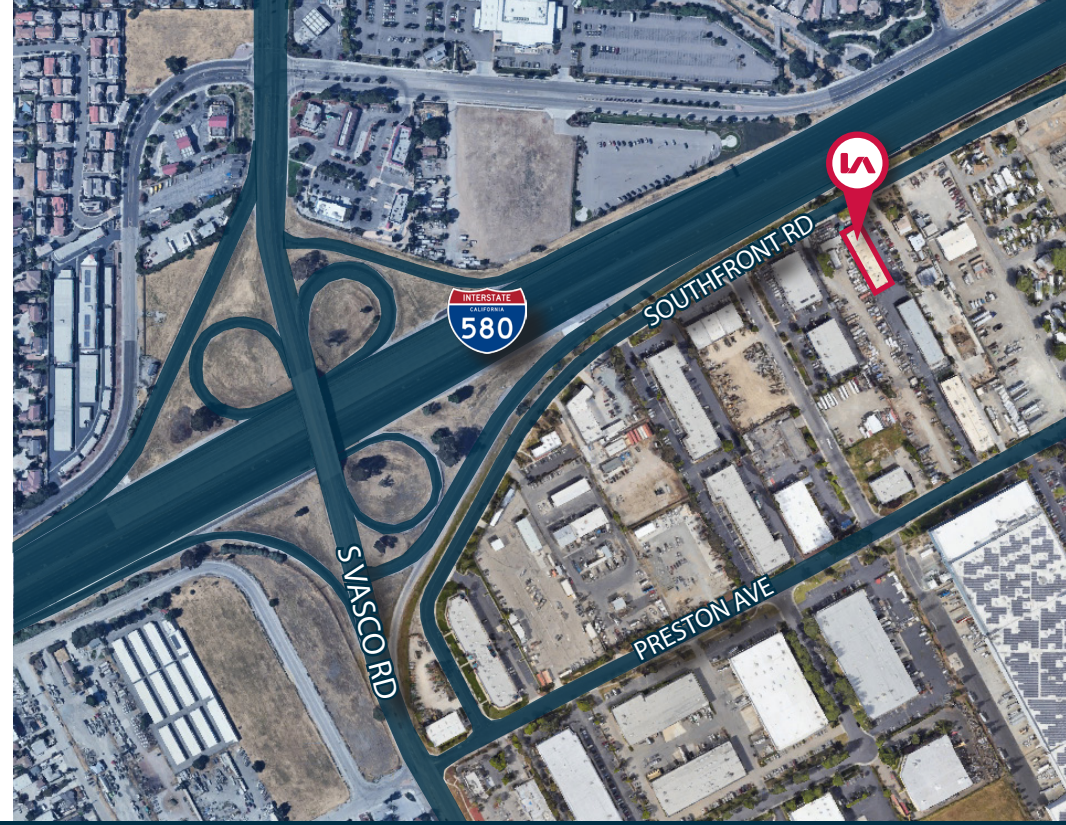
6421 SOUTHFRONT ROAD, LIVERMORE, CA 94551

LOCAL EXPERTISE. INTERNATIONAL REACH. WORLD CLASS.

UNIT F - FLOOR PLAN



*FLOORPLAN NOT TO SCALE



PROPERTY HIGHLIGHTS



Property type: Industrial Warehouse/Office



Two (2) 12'x12' rollup door



Unit F: ±2,000 SF



220 power 3 phase



Corner Unit



T-8 lighting



Reception Area/Sales Counter



Ideal machine shop



700±SF mezzanine area not included in total SF



Easy access to I-580 via Southfront Road



Two (2) Restrooms



Lease rate: \$1.75 PSF Gross

6421
SOUTHFRONT ROAD