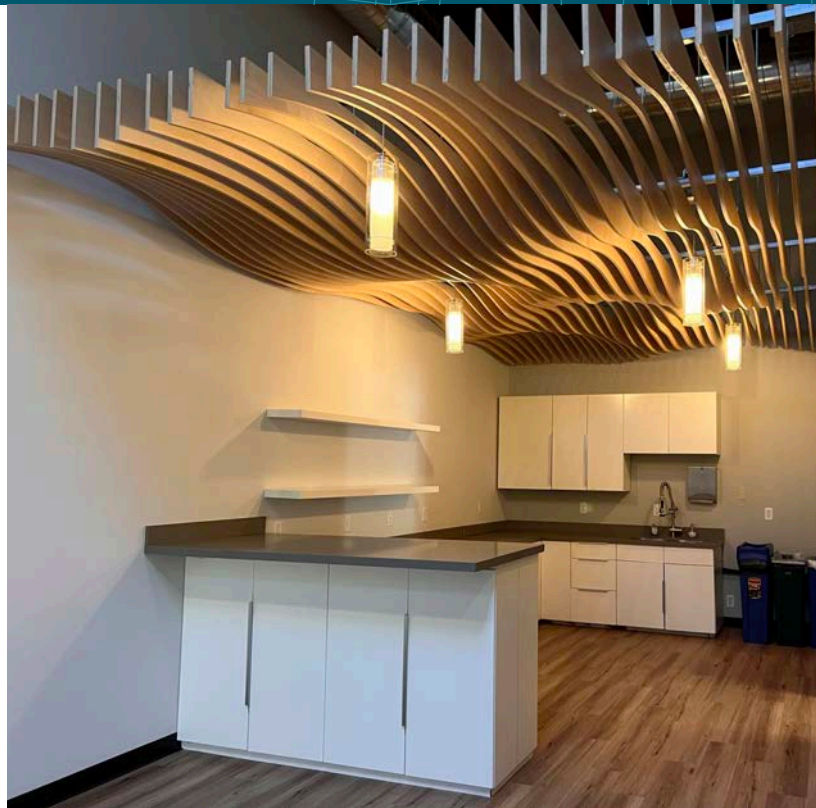


# OFFICE/R&D FOR LEASE

707, 709, & 713 N SHORELINE BLVD, MOUNTAIN VIEW, CA



## *±1,500 - ±5,000 SF R&D Offices Available For Lease*

Flexible workspace and open collaborative break room

North Shoreline location and close to amenities

Close to Caltrain & one mile from Hwy 101 and Hwy 85

On-site parking and mature landscaping

High ceiling, exposed beams, polished concrete floors, skylights, and glass on two sides

Call broker to tour

\$5.50 PSF Gross

**DAVE GEISSBERGER**

408.588.2338

dave.geissberger@kidder.com

LIC N° 01401887

**KIDDER.COM**

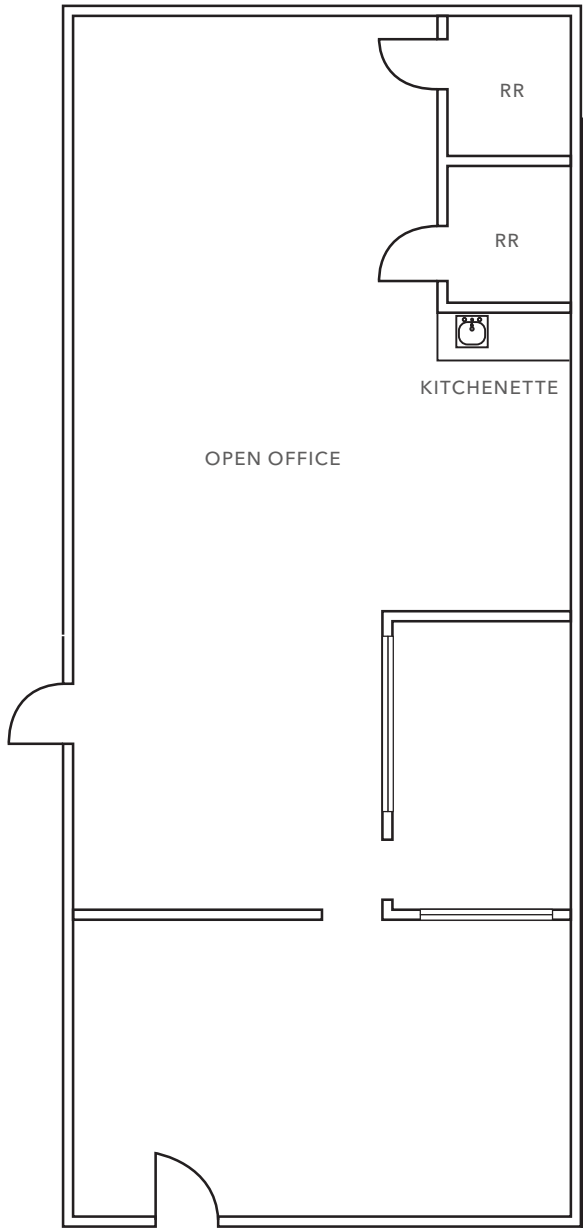
This information supplied herein is from sources we deem reliable. It is provided without any representation, warranty, or guarantee, expressed or implied as to its accuracy. Prospective Buyer or Tenant should conduct an independent investigation and verification of all matters deemed to be material, including, but not limited to, statements of income and expenses. Consult your attorney, accountant, or other professional advisor.

**km** Kidder  
Mathews

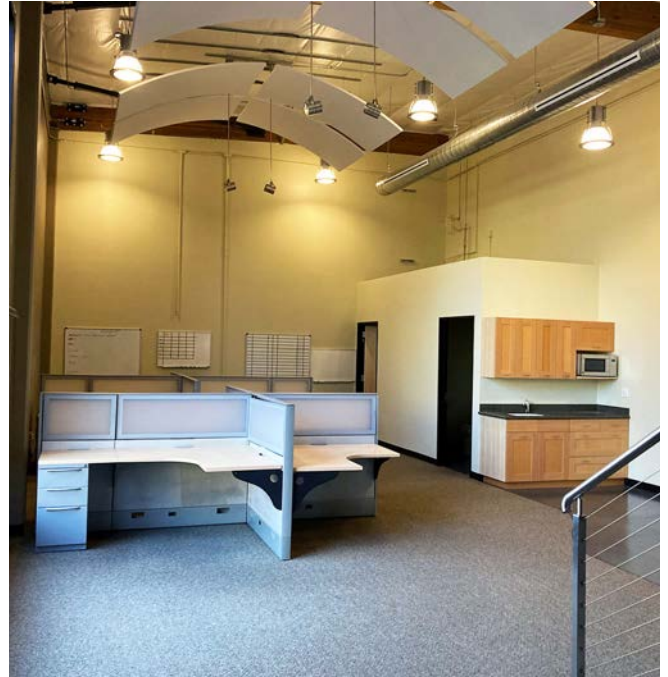
# 707 N SHORELINE BLVD

*±1,500 SF*  
AVAILABLE

*NOW*  
AVAILABLE



FLOOR PLAN NOT TO SCALE



[KIDDER.COM](http://KIDDER.COM)

This information supplied herein is from sources we deem reliable. It is provided without any representation, warranty, or guarantee, expressed or implied as to its accuracy. Prospective Buyer or Tenant should conduct an independent investigation and verification of all matters deemed to be material, including, but not limited to, statements of income and expenses. Consult your attorney, accountant, or other professional advisor.

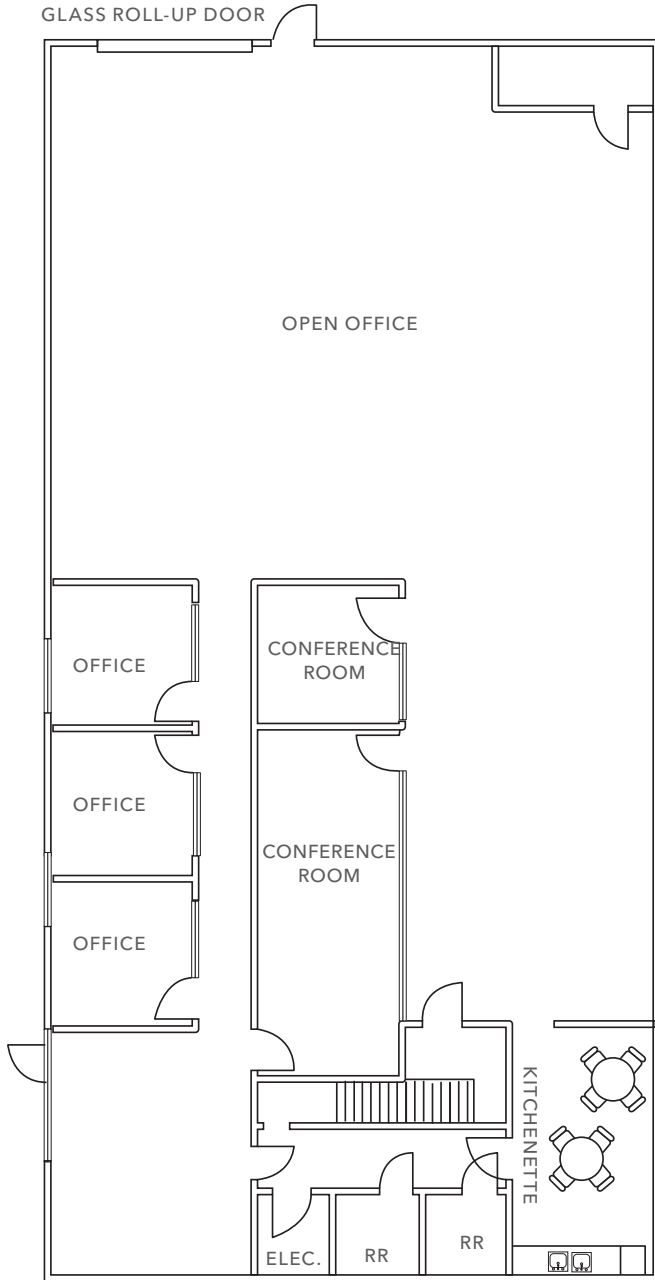
# 709 N SHORELINE BLVD

*±5,000 SF*

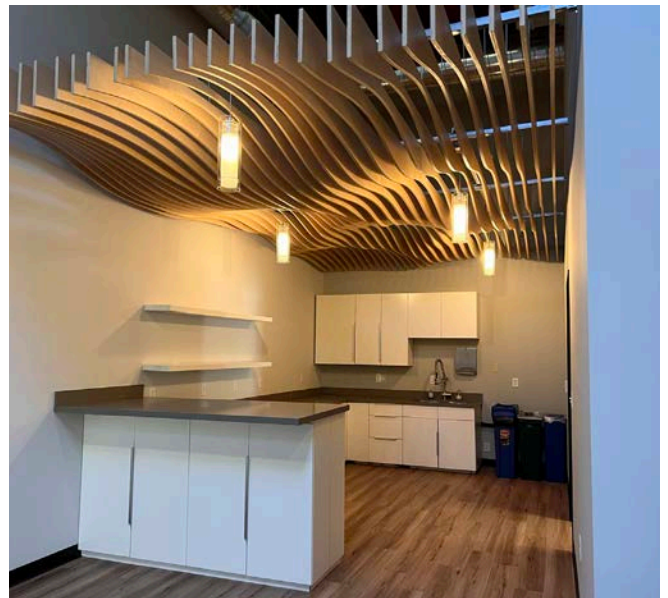
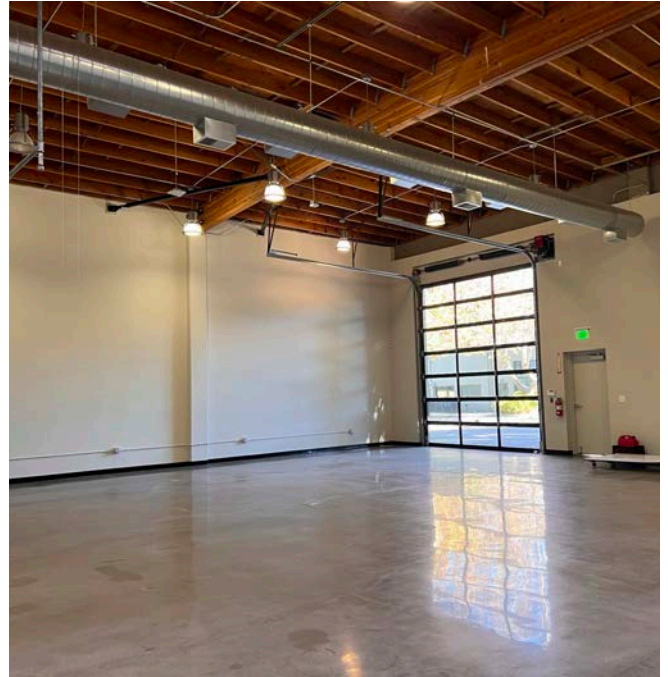
AVAILABLE

*NOW*

AVAILABLE



FLOOR PLAN NOT TO SCALE



[KIDDER.COM](http://KIDDER.COM)

This information supplied herein is from sources we deem reliable. It is provided without any representation, warranty, or guarantee, expressed or implied as to its accuracy. Prospective Buyer or Tenant should conduct an independent investigation and verification of all matters deemed to be material, including, but not limited to, statements of income and expenses. Consult your attorney, accountant, or other professional advisor.

707, 709, & 713 N SHORELINE BLVD

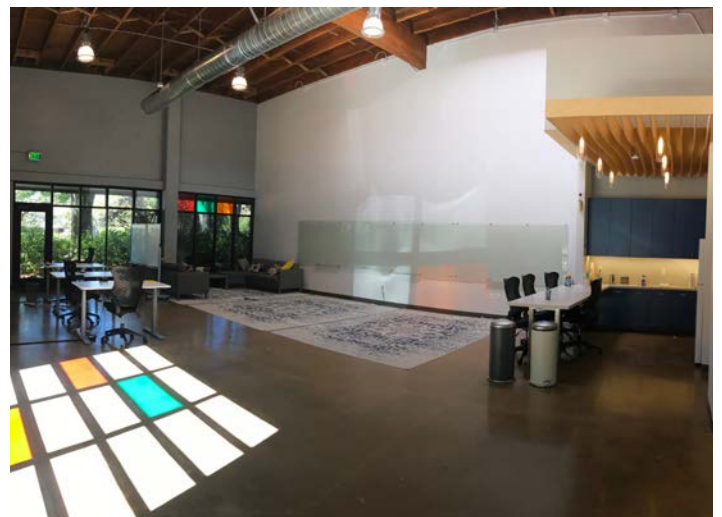
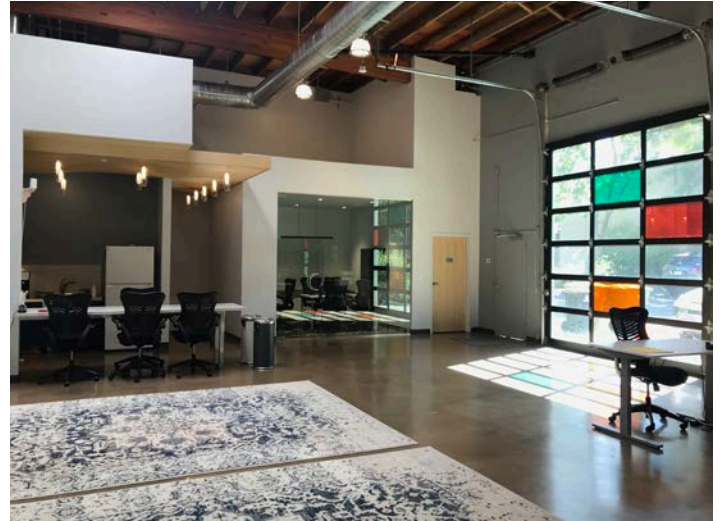
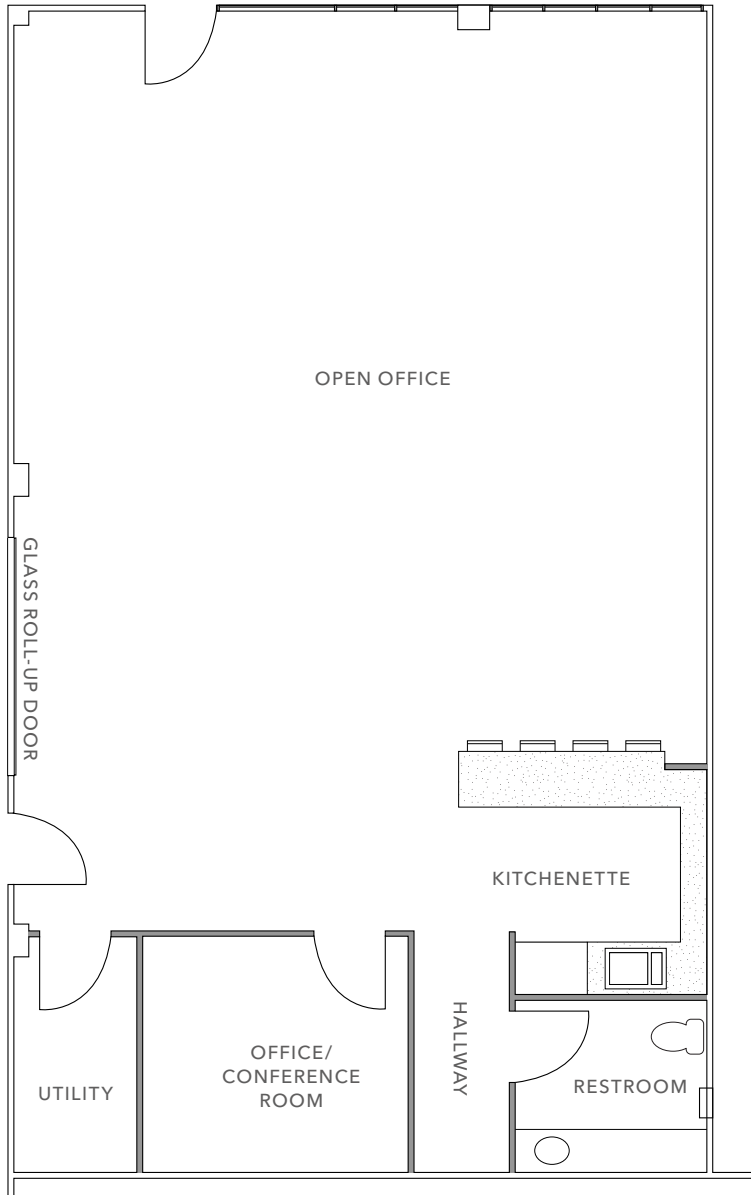
# 713 N SHORELINE BLVD

*±1,500 SF*

AVAILABLE

*NOW*

AVAILABLE



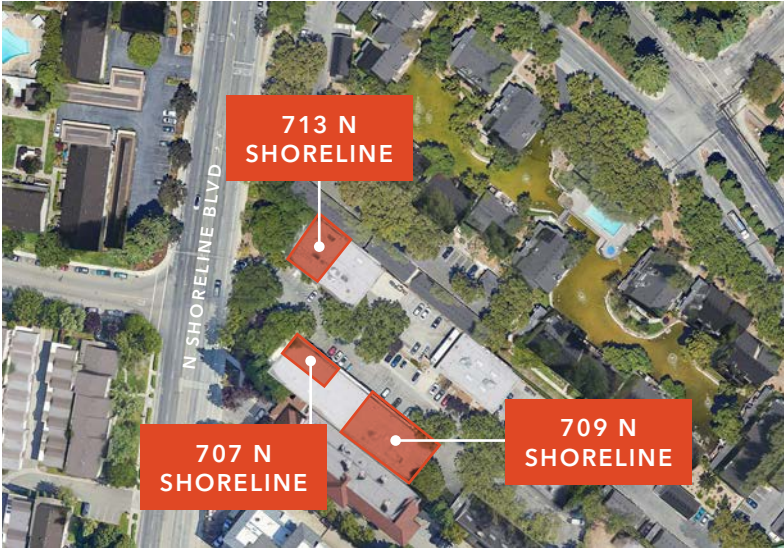
FLOOR PLAN NOT TO SCALE

[KIDDER.COM](http://KIDDER.COM)

This information supplied herein is from sources we deem reliable. It is provided without any representation, warranty, or guarantee, expressed or implied as to its accuracy. Prospective Buyer or Tenant should conduct an independent investigation and verification of all matters deemed to be material, including, but not limited to, statements of income and expenses. Consult your attorney, accountant, or other professional advisor.

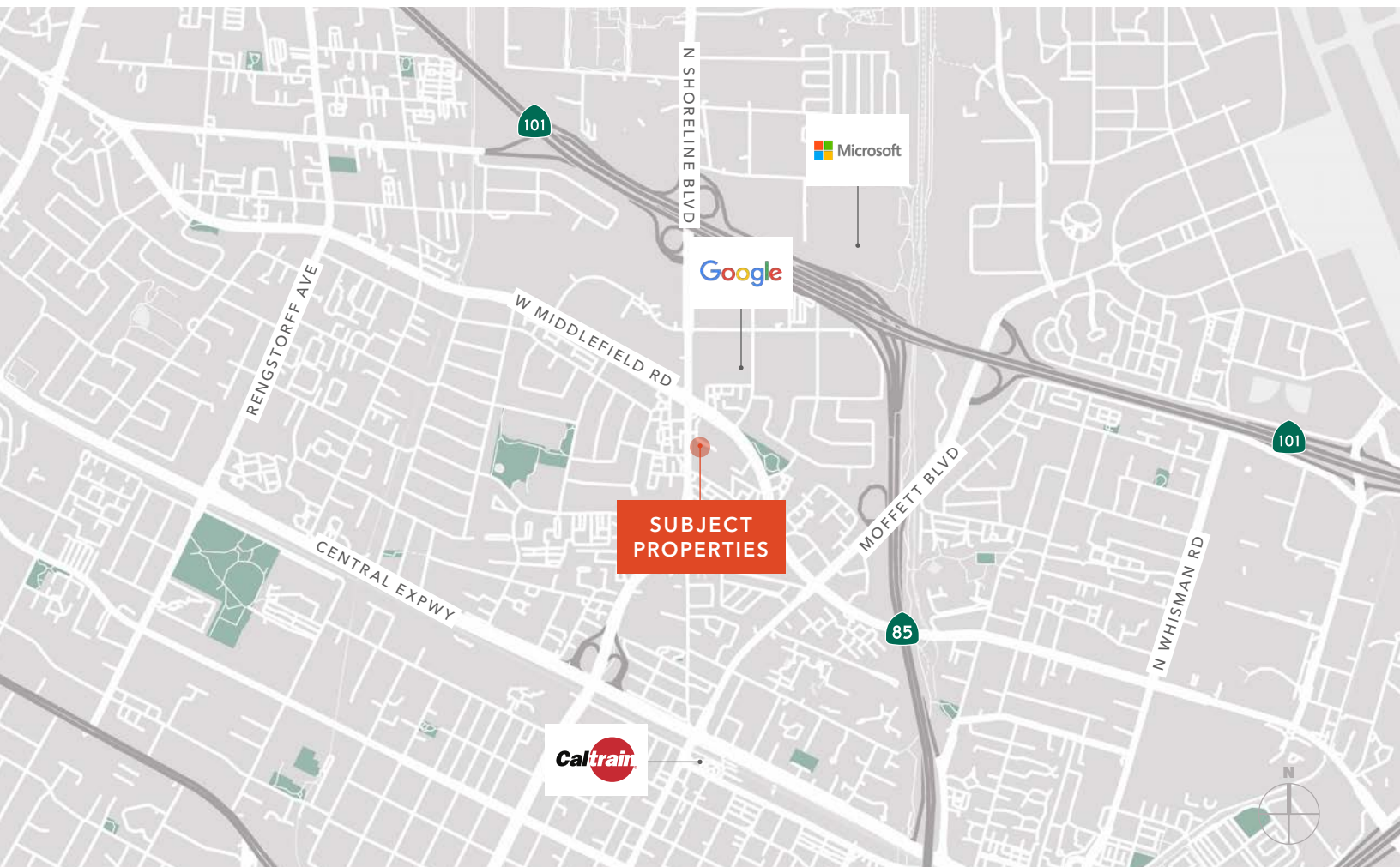


# 707, 709, & 713 N SHORELINE BLVD



## DRIVING DISTANCE FROM SUBJECT

CALTRAIN MOUNTAIN VIEW STATION	5 minutes
PALO ALTO	10 minutes
SAN JOSE INT'L AIRPORT	15 minutes
DOWNTOWN SAN JOSE	20 minutes
SAN FRANCISCO INT'L AIRPORT	25 minutes



KIDDER.COM

This information supplied herein is from sources we deem reliable. It is provided without any representation, warranty, or guarantee, expressed or implied as to its accuracy. Prospective Buyer or Tenant should conduct an independent investigation and verification of all matters deemed to be material, including, but not limited to, statements of income and expenses. Consult your attorney, accountant, or other professional advisor.



EAT + DRINK

- 01 Safeway
- 02 Momoya Sushi
- 03 Jack in the Box
- 04 Chef Zhao Bistro
- 05 Los Portales
- 06 Taqueria Tres Hermanos
- 07 Shana Thai

- 08 Chez TJ
- 09 Little Sheep Mongolian
- 10 Vaso Azzuro
- 11 Oren's Hummus
- 12 Bushido
- 13 Asian Box
- 14 Doppio Zero

- 15 Blue Line Pizza
- 16 Eureka!
- 17 Fiesta Del Mar Too
- 18 Don Giovanni
- 19 Bonchon Chicken
- 20 Crepevine
- 21 Sushi Tomi

