

# FOR LEASE

FENCED YARD

# Warehouse/Shop

214 Everett Street | Richmond, VA 23224



COMMONWEALTH  
COMMERCIAL  
Comprehensive Property Solutions



## PROPERTY HIGHLIGHTS

- › 4,264± SF total Warehouse/Shop with 0.5± AC fenced yard
- › New 3,000± SF pre-engineered metal building to be built and completed early Q4 2024 with existing 1,264± SF shop
- › 500± SF office space
- › Three 12' x 14' drive in doors
- › 16' - 20' clear ceiling height
- › Located directly off I-95 Maury Street exit
- › Zoned B-7 (grandfathered M-2 uses)
- › Rental Rate: \$6,850 per month, NNN

## FOR MORE INFORMATION:

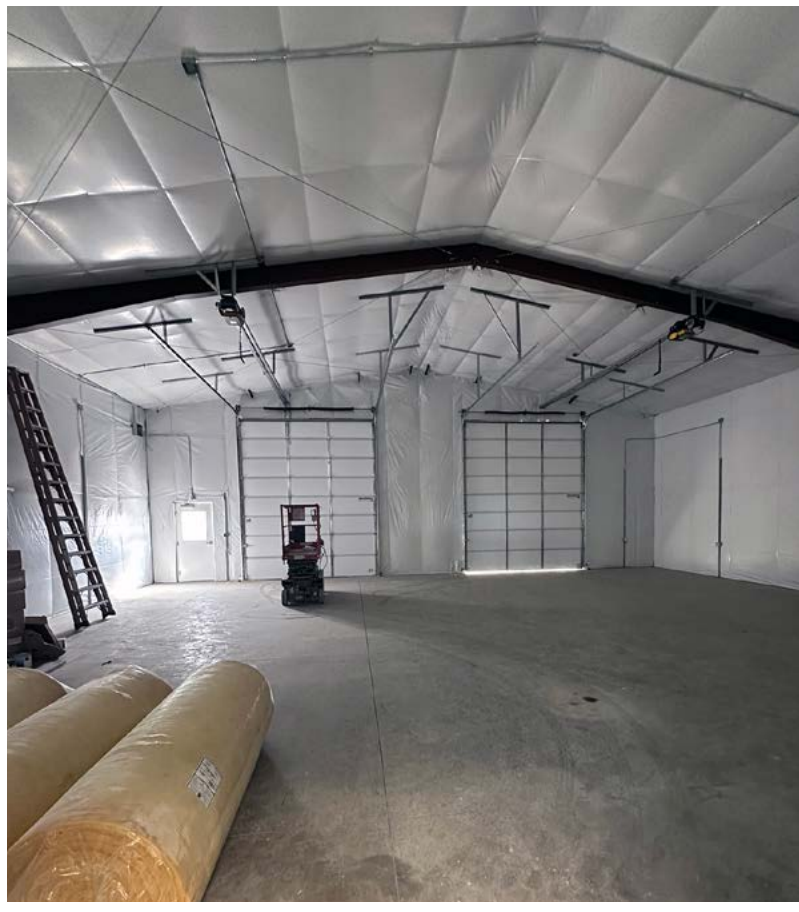
### BEN BRUNI, SIOR

Senior Vice President | Partner

804-793-0046

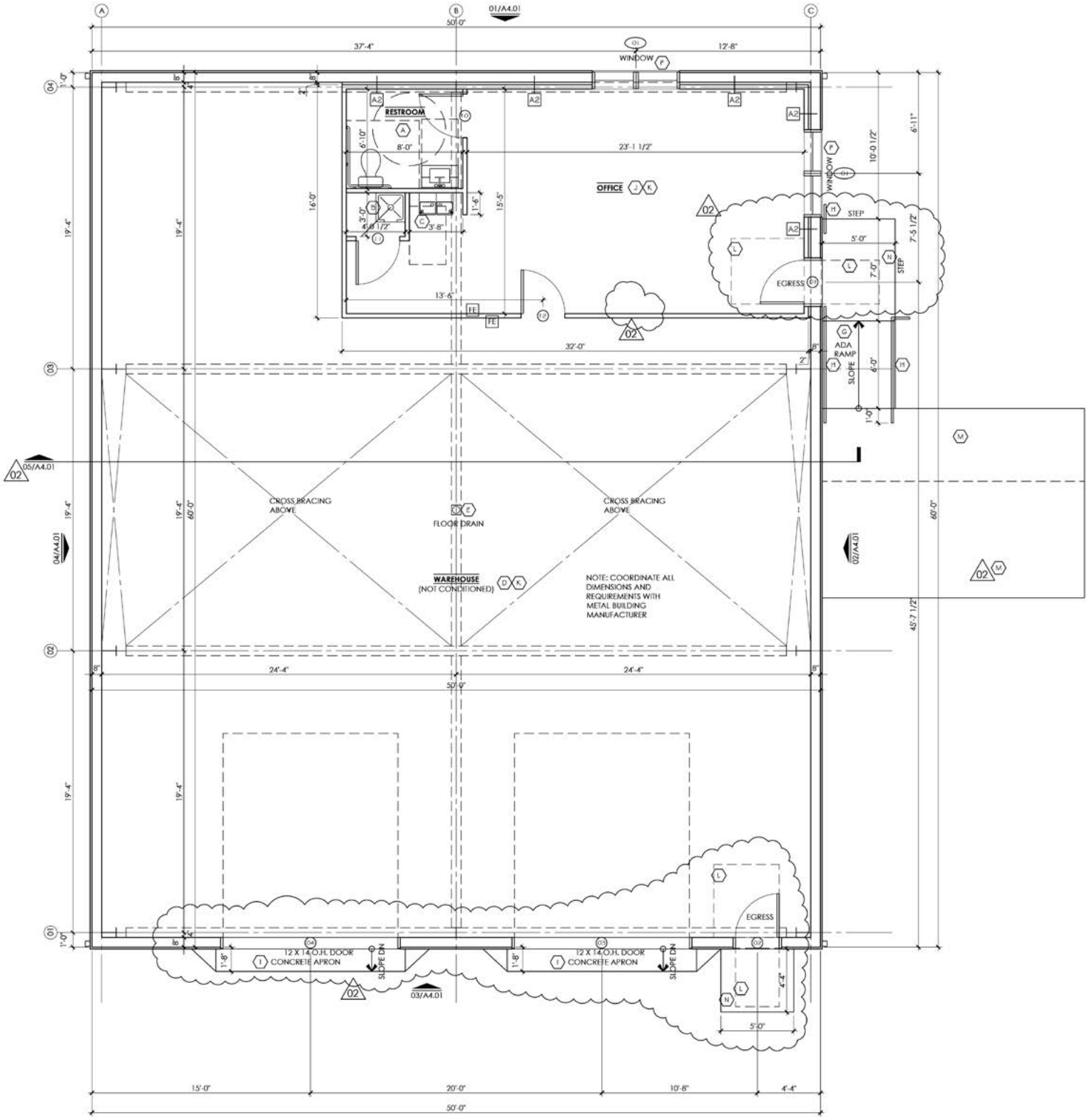
[bbruni@commonwealthcommercial.com](mailto:bbruni@commonwealthcommercial.com)

Commonwealth Commercial Partners, LLC represents the Landlord of this property. Information contained herein is deemed reliable but is not guaranteed.

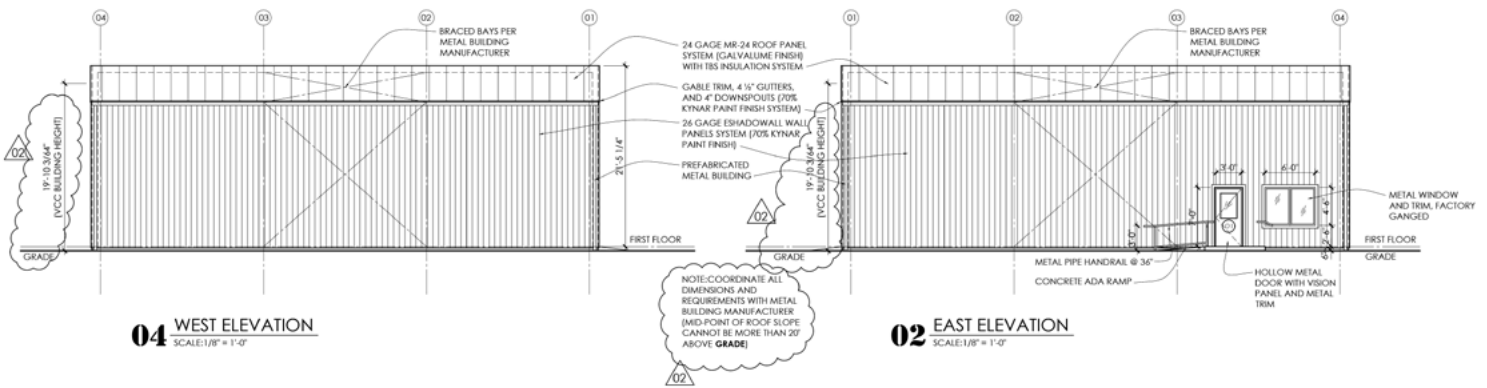
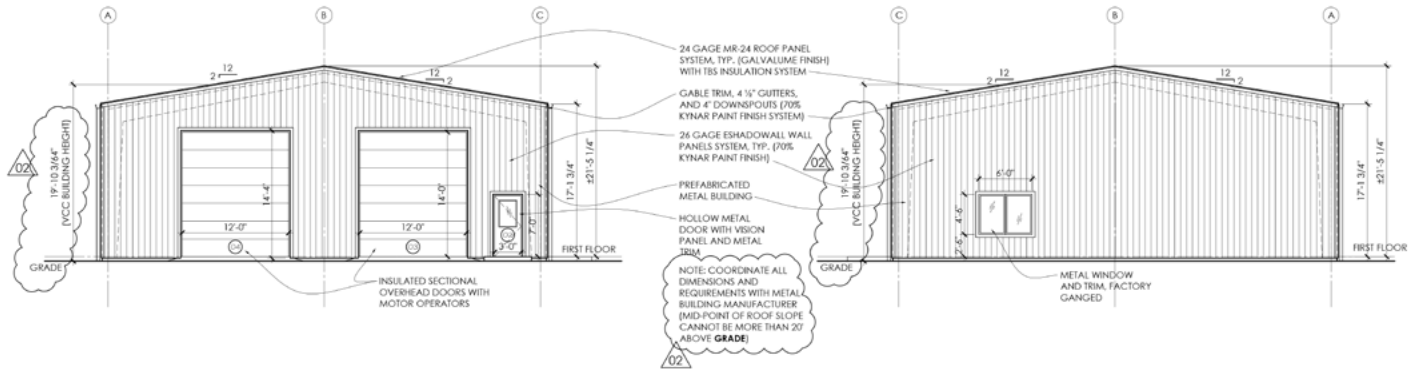


FOR LEASE | 214 EVERETT STREET | RICHMOND, VA 23224

# FLOOR PLAN



# BUILDING ELEVATIONS



# SURROUNDING AREA



FOR LEASE | 214 EVERETT STREET | RICHMOND, VA 23224