

901 N Nelson St

Arlington, Virginia

Kelly Silverman

240.793.6821

kelly.silverman@cbre.com

2,157 SF - Former Day Spa Space Available Immediately

LEASING DETAILS

- Located on the ground floor of Virginia Square Apartments
- Former Day Spa Space
- Previously occupied by Mimi Day Spa
- 2,157 SF
- Available Immediately
- \$10.73/SF NNN

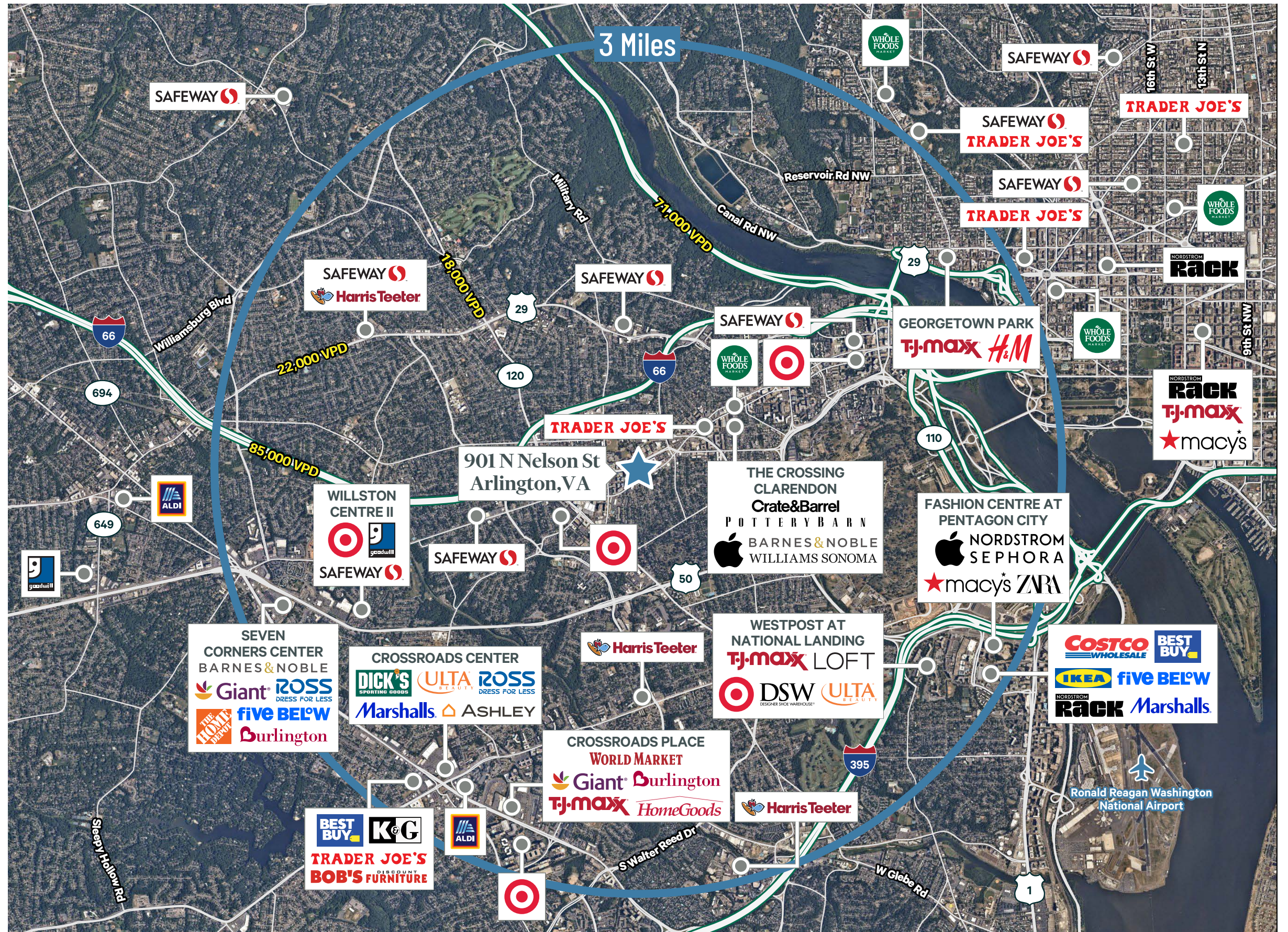
COMMUTER INFO

- Minutes away from Washington DC
- Directly outside the Virginia Square-GMU Metro Station
- Walking distance to Ballston-MU and Clarendon Metro Stations
- 10-Minute drive to Court House and Rosslyn Metro Stations, in addition to multiple commuter rails
- Easy access to Interstate 66
- Excellent Neighborhood Walk Score: 89 out of 100



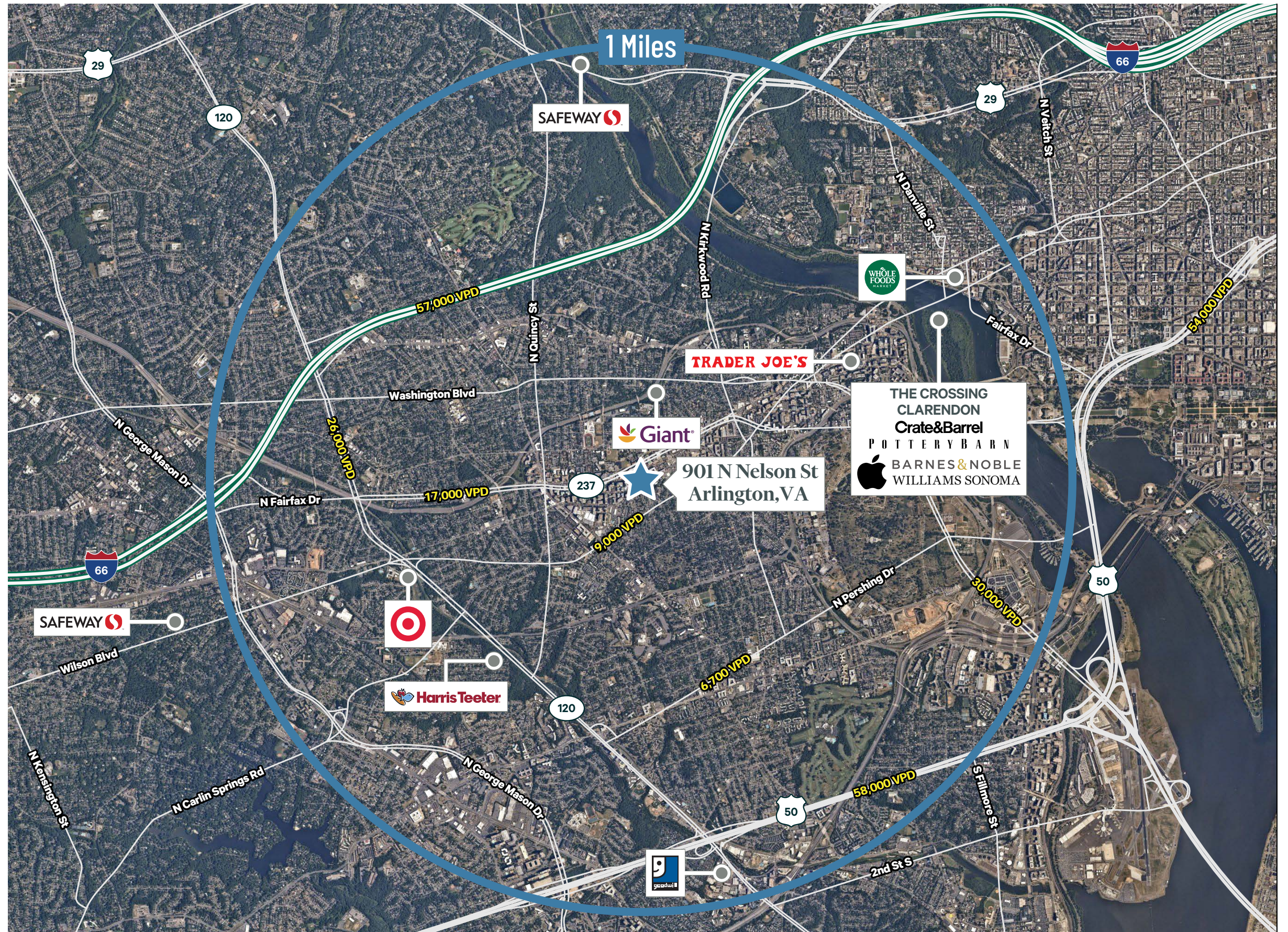
Market Overview

3-Mile Radius
Arlington, VA



Nearby Retailers

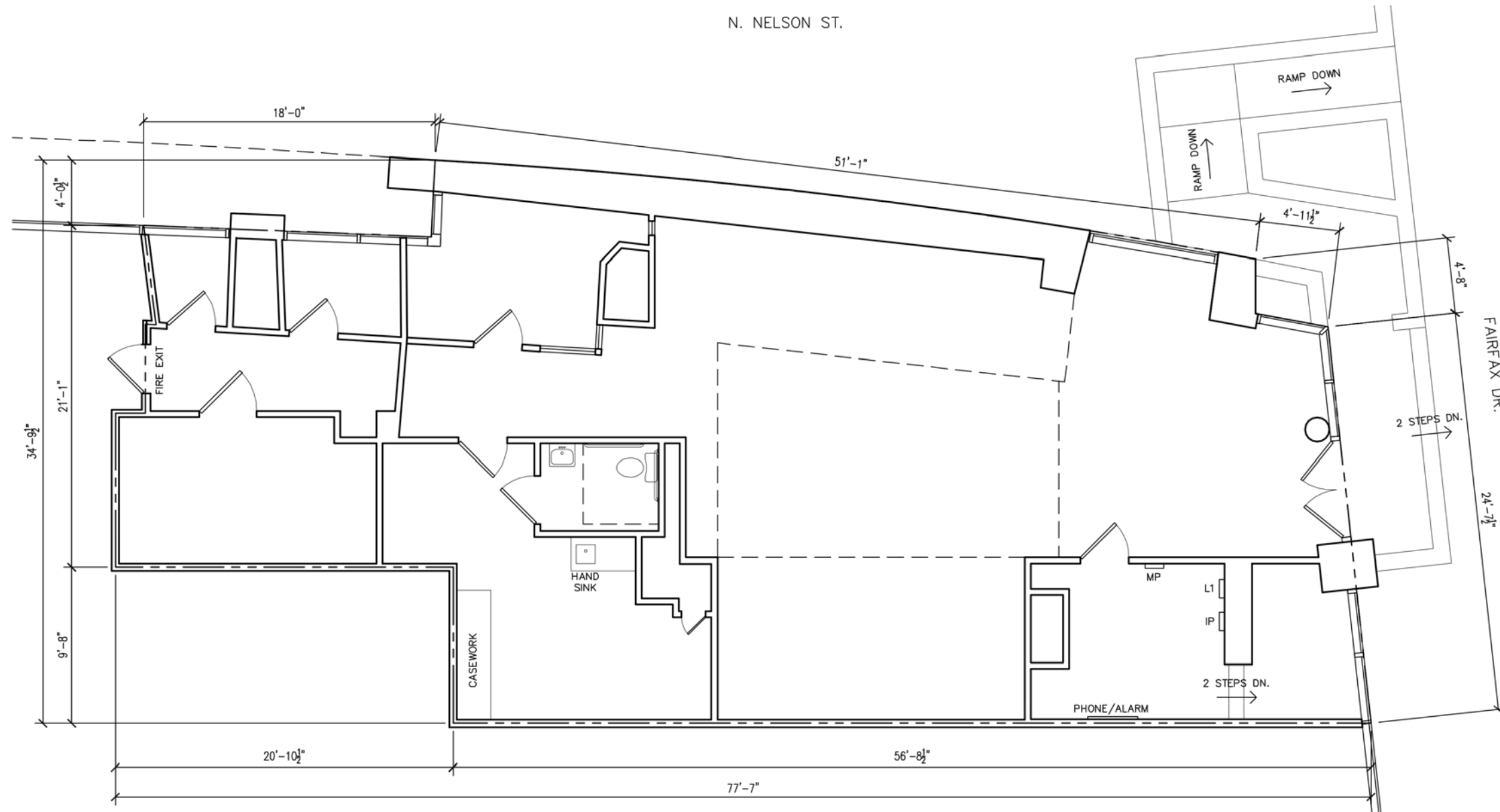
Within 1 Mile



Nearby Retailers

Within 0.5 Miles





For more information, please contact:

Kelly Silverman
Senior Vice President
240.793.6821
kelly.silverman@cbre.com

© 2024 CBRE, Inc. All rights reserved. This information has been obtained from sources believed reliable, but has not been verified for accuracy or completeness. You should conduct a careful, independent investigation of the property and verify all information. Any reliance on this information is solely at your own risk. CBRE and the CBRE logo are service marks of CBRE, Inc. All other marks displayed on this document are the property of their respective owners, and the use of such logos does not imply any affiliation with or endorsement of CBRE. Photos herein are the property of their respective owners. Use of these images without the express written consent of the owner is prohibited.