

# 5410

Wilshire Blvd

*Miracle Mile*

**OFFICE SUBLEASE**



# SUBLEASE DETAILS

5410 WILSHIRE BLVD, STE 608  
LOS ANGELES, CA 90036

*Bright, historic office in the heart of Miracle Mile. Layout features a large open work space with 2 private offices.*



## SIZE

800 SF

## TERM

Through Dec 31, 2026

## PRICE

\$3.12/SF FSG

## PARKING

2 spaces @ \$200/mo.

## DISTINCTIVE ARCHITECTURE & DESIGN

- Features high ceilings, operable windows, and sweeping views of the LA skyline and Hollywood Hills.
- Suite includes exposed beams and concrete floors, creating a raw, industrial aesthetic.
- The building's bold character attracts tenants in fashion, film, architecture, advertising, & other creative industries.

## PRIME MIRACLE MILE LOCATION

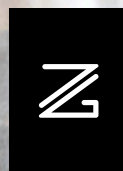
- Located in the heart of Miracle Mile, surrounded by top-tier restaurants, shops, museums, galleries, and cultural landmarks.
- Pedestrian-friendly atmosphere with convenient public transit and ample parking, ideal for both daytime and evening activity.

## HISTORIC LEGACY & RESTORATION

- Built in 1931 as The Dominguez-Wilshire Building by renowned architects & developers, earning its place as the "jewel" of the Miracle Mile.
- Restored by Carnegie Hill Properties, earning the 2000 Los Angeles Conservancy Preservation Award for excellence in historic preservation & Art Deco craftsmanship.



## LISTING TEAM



### JACKIE LUBRANO

Senior Vice President

310.469.9376

jackie@zacutogroup.com

DRE #02024601

### BEN KHOUBIAN

Senior Director

424.254.3160

ben@zacutogroup.com

DRE #02197728

SUBLEASE

5410 WILSHIRE BLVD, STE 608 LOS ANGELES, CA 90036



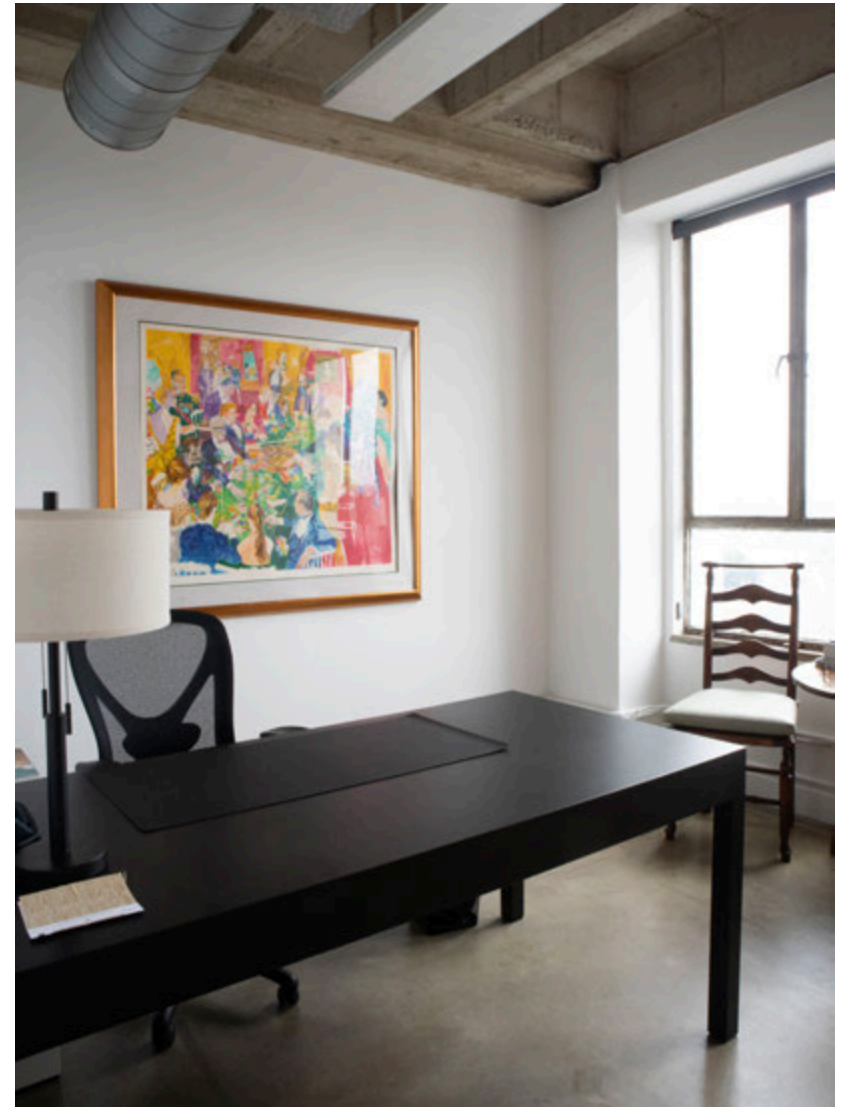
ZACUTOGROUP.COM | 310-469-9300





SUBLEASE

5410 WILSHIRE BLVD, STE 608 LOS ANGELES, CA 90036



ZACUTOGROUP.COM | 310.469.9012

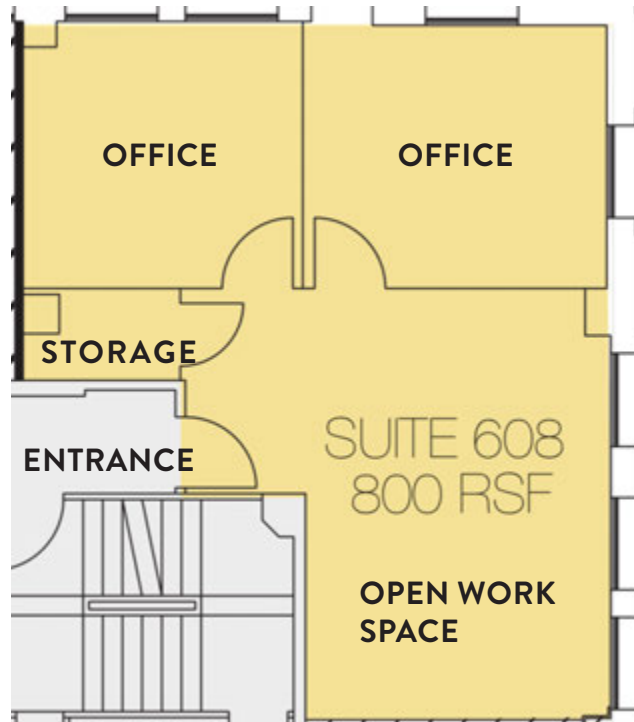




**SUBLEASE**

5410 WILSHIRE BLVD, STE 608 LOS ANGELES, CA 90036

## FLOOR PLAN





5410

Wilshire Blvd

*Miracle Mile*





# A+ LOCATION AT THE CENTER OF IT ALL

CENTRAL TO SOME OF THE BEST RESTAURANTS, MUSEUMS & AMENITIES IN THE CITY

5410 WILSHIRE BLVD, STE 608 LOS ANGELES, CA 90036



📍 REPUBLIQUE - LA BREA AVE



📍 EL REY THEATRE - WILSHIRE BLVD



📍 MET HER AT A BAR - LA BREA AVE



📍 LACMA - WILSHIRE BLVD



📍 KAZUNORI - WILSHIRE BLVD

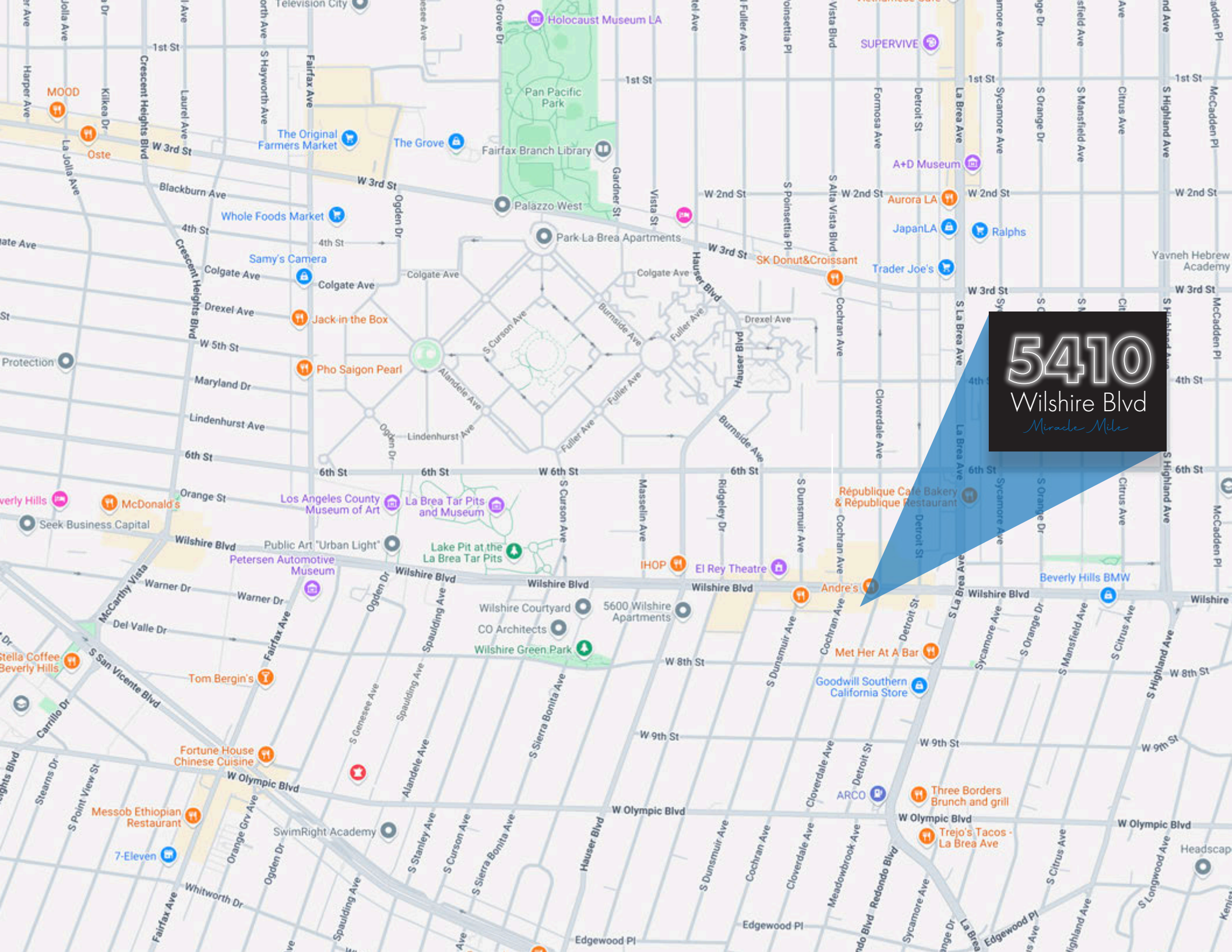


📍 ACADEMY MUSEUM OF MOTION PICTURES



ZACUTOGROUP.COM | 310.469.9012





5410  
Wilshire Blvd  
*Miracle Mile*



# 5410

## Wilshire Blvd

*Miracle Mile*



**ZACUTO GROUP**  
COMMERCIAL REAL ESTATE

**JACKIE LUBRANO**

*Senior Vice President*

310.469.9376

jackie@zacutogroup.com

DRE #02024601

**BEN KHOUBIAN**

*Senior Director*

424.254.3160

ben@zacutogroup.com

DRE #02197728

*No warranty, express or implied, is made as to the accuracy of the information contained herein. This information is submitted subject to errors, omissions, change of price, rental or other conditions, withdrawal without notice. All parties who receive this material should not rely on it, but should use it as a starting point of analysis, and should independently confirm the accuracy of the information contained herein through a due diligence review of the books, records, files and documents that constitute reliable sources of the information described herein. Logos and images are for identification purposes only and may be trademarks of their respective companies. All terms provided are approximate. Leasee to verify. 8/2025*

**ZACUTOGROUP.COM | 310-469-9300**

