

1400 EAST

1400 EAST 4TH ST | 16,700 SF

CREATIVE FLEX / OFFICE / INDUSTRIAL / RETAIL SPACE AVAILABLE



For More Information, Contact:

Luke Watson | luke.watson@streamrealty.com | 512.481.3056

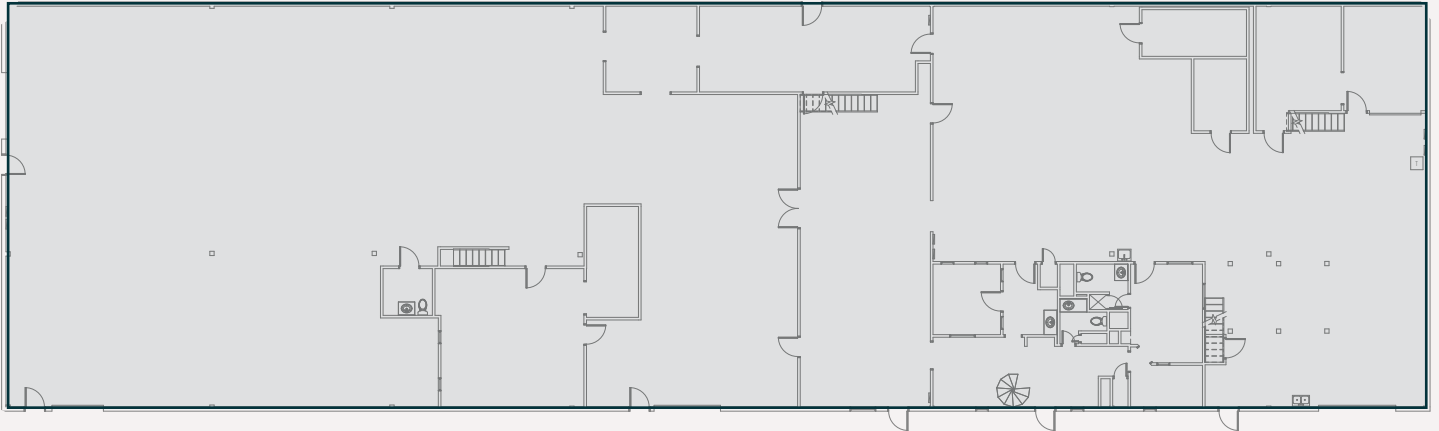
Will Hall | will.hall@streamrealty.com | 512.481.3039

STREAM

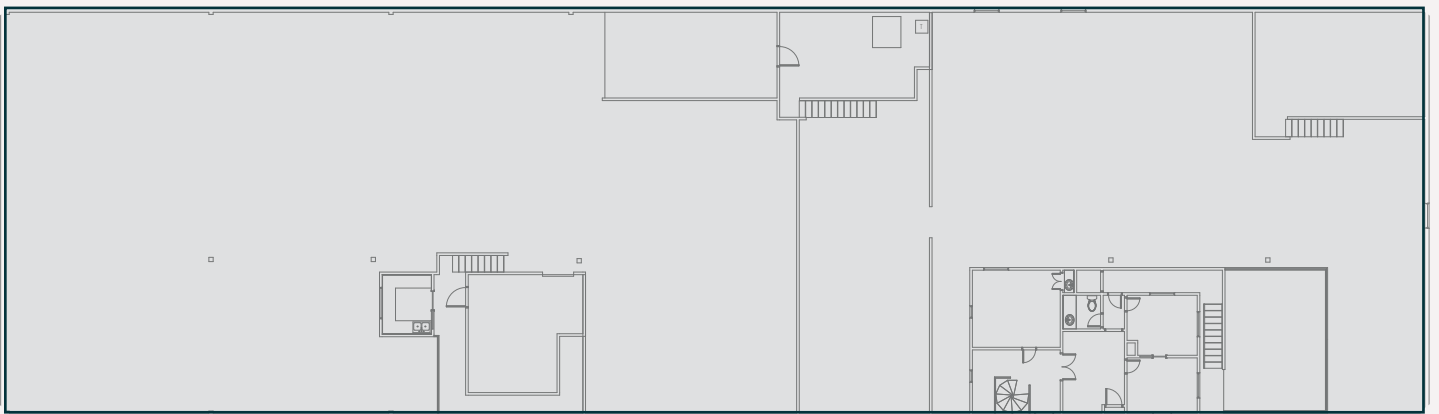
SPEC OVERVIEW:

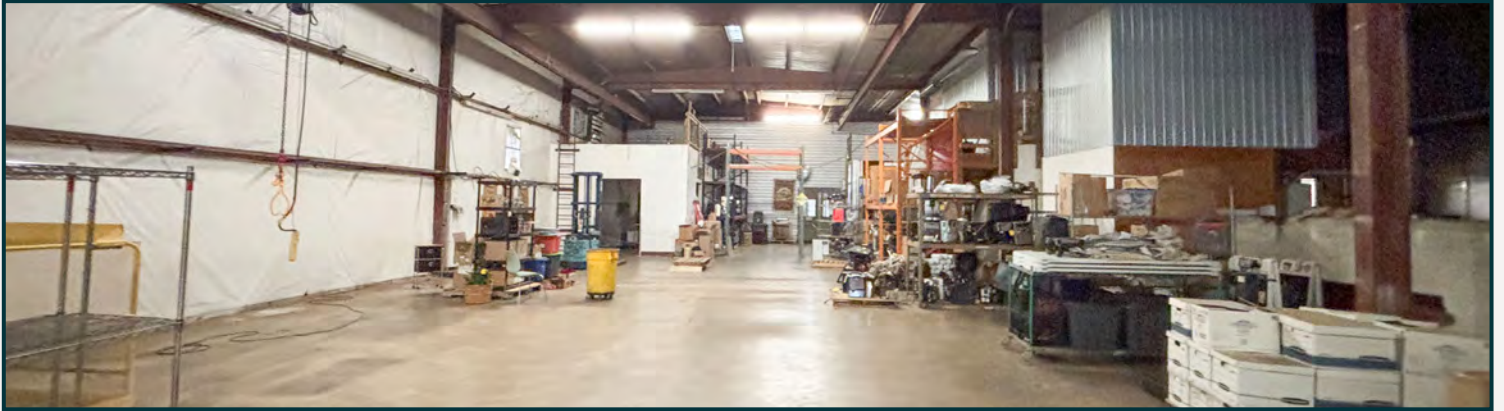
- 16,700 SF
- Available 1.1.25
- Creative Flex / Office / Industrial / Retail Space
- Grade Level and Semi Dock Loading
- 100% HVAC
- 0.5 Acre of Fenced Storage and Parking

First Floor



Mezzanine





LOCATION

1400
EAST

Amazing opportunity in the heart of Austin's most walkable neighborhood.

This expansive 16,700 SF space on the vibrant East Side offers limitless potential for creative offices, industrial use, retail, or flex space. Formerly home to Texas Coffee Traders, this prime property is surrounded by a dynamic mix of art, music, and restaurants. Located along the Lance Armstrong Bikeway and the Metro Rail, it provides seamless accessibility by foot, bike, scooter, or train, making it an ideal spot for any business.

- **Downtown Austin** - 5 minutes (1 mi)
- **Austin Bergstrom International Airport** - 11 minutes (6.2 mi)
- **Interstate 35** - 5 minutes (0.4 mi)
- **Tesla Gigafactory** - 15 minutes (9.3 mi)



STREAM

For More Information, Contact:

Luke Watson | luke.watson@streamrealty.com | 512.481.3056

Will Hall | will.hall@streamrealty.com | 512.481.3039

1400 EAST

16,700 SF AVAILABLE

CREATIVE FLEX / OFFICE / INDUSTRIAL / RETAIL SPACE



For More Information, Contact:

Luke Watson | luke.watson@streamrealty.com | 512.481.3056

Will Hall | will.hall@streamrealty.com | 512.481.3039