

Riverside Square

1620 Margaret Street
Jacksonville, FL 32204

Property Highlights

- 1,000± SF inline space available for lease
- 14,000± SF center in the heart of the Riverside shopping and dining district
- Join Al's Pizza, Firehouse Subs, SunTrust Bank, AT&T, SOL US Tanning, and more
- Just steps to Publix, Starbucks, highrise residences, trendy restaurants, historic Five Points, and Memorial Park in this walkable neighborhood
- Daytime population of 167,921 within three mile radius
- Close proximity to St. Vincent's Medical Center, a 20± acre complex including a 528-bed (and expanding) hospital and numerous specialty services
- Jacksonville downtown business district within two miles

Nancy Sumner

Vice President
+1 904 861 1134
nancy.sumner@colliers.com

Katy Figg

Vice President
+1 904 861 1133
katy.figg@colliers.com

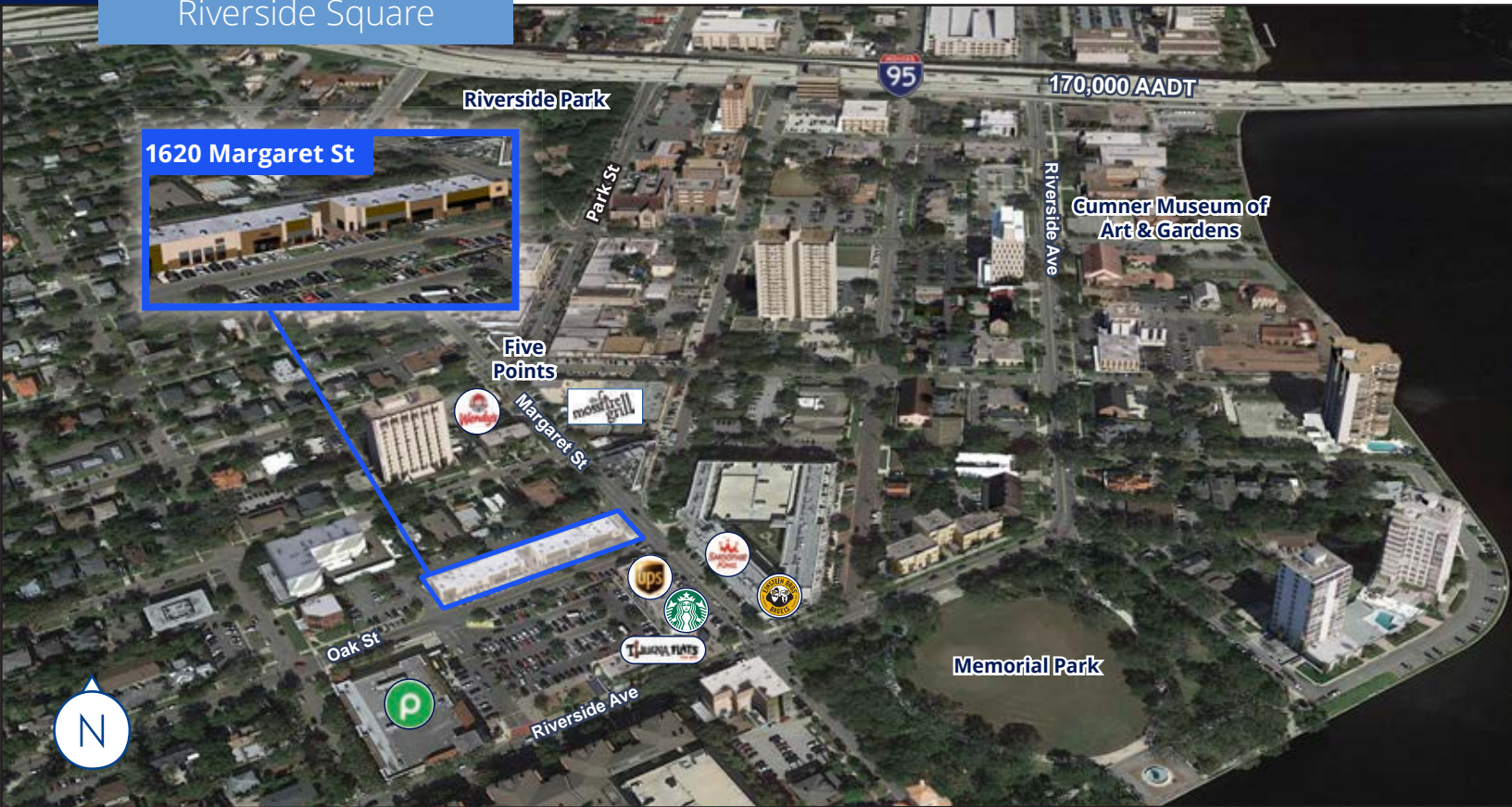
Colliers

76 S. Laura St.
Jacksonville, FL 32202
colliers.com/jacksonville

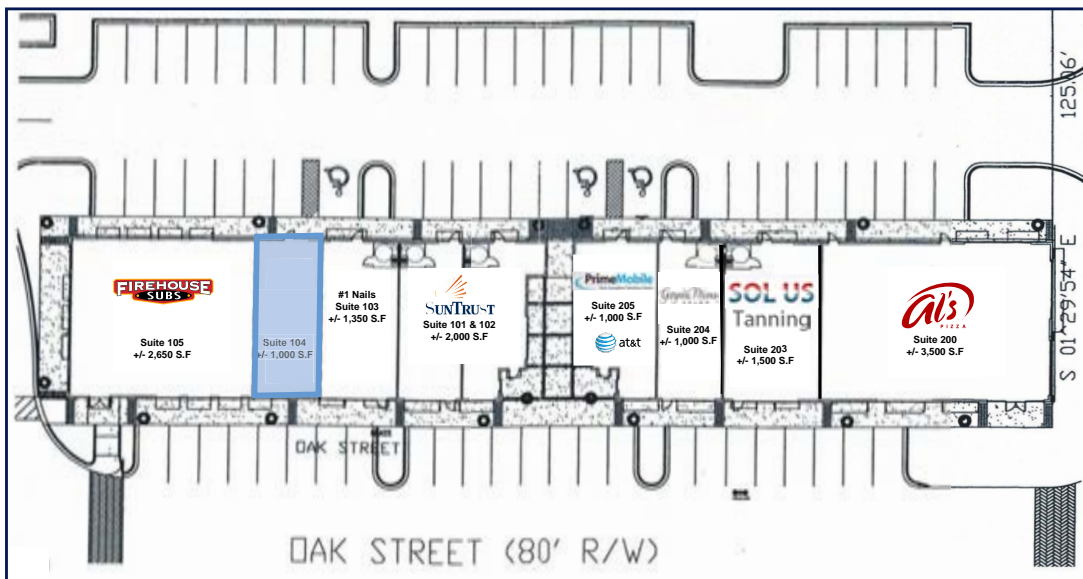


For Lease

Riverside Square



Site Plan



Availability

Tenant	SF
Firehouse Subs	2,650
Available	1,000
Nail Salon	1,350
SunTrust	2,000
AT&T	1,000
Gwynne Mims Salon	1,000
SOL US Tanning	1,500
Al's Pizza	3,500

Demographics

Riverside Square

