

MRG

For Lease

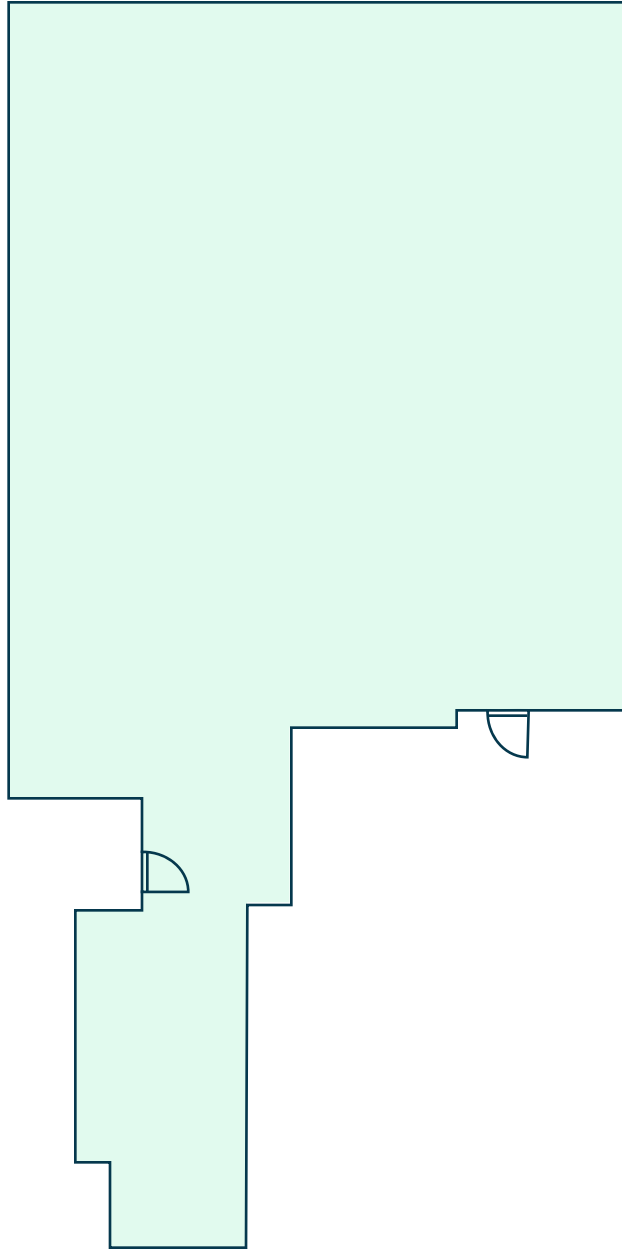
104 FROST

104 Frost St

New Development Corner Retail Space For Lease
3,500 sq ft | 104 Frost St | Brooklyn, NY 11211

FLOOR PLAN

104 Frost St, Brooklyn, NY 11211



OVERVIEW

- **Address:** 104 Frost St, Brooklyn, NY 11211
- **Cross Streets:** Meeker and Manhattan Avenue
- **Neighborhood:** Williamsburg

SPACE DETAILS

- **Size:** 3,500 sq ft
- **Ceiling Height:** 12 ft
- **Frontage:** 50 ft

HIGHLIGHTS

- Vanilla Box
- Could Divide Into 3 Space's
- New Dev
- Massive Backyard
- 50ft Frontage

TRANSPORTATION

- 🚆 7 min walk to train L
- 🚌 5 min walk to B48, 8 min walk to B24
- ✈️ 12 min drive to LGA, 27 min drive to JFK, 36 min drive to EWR

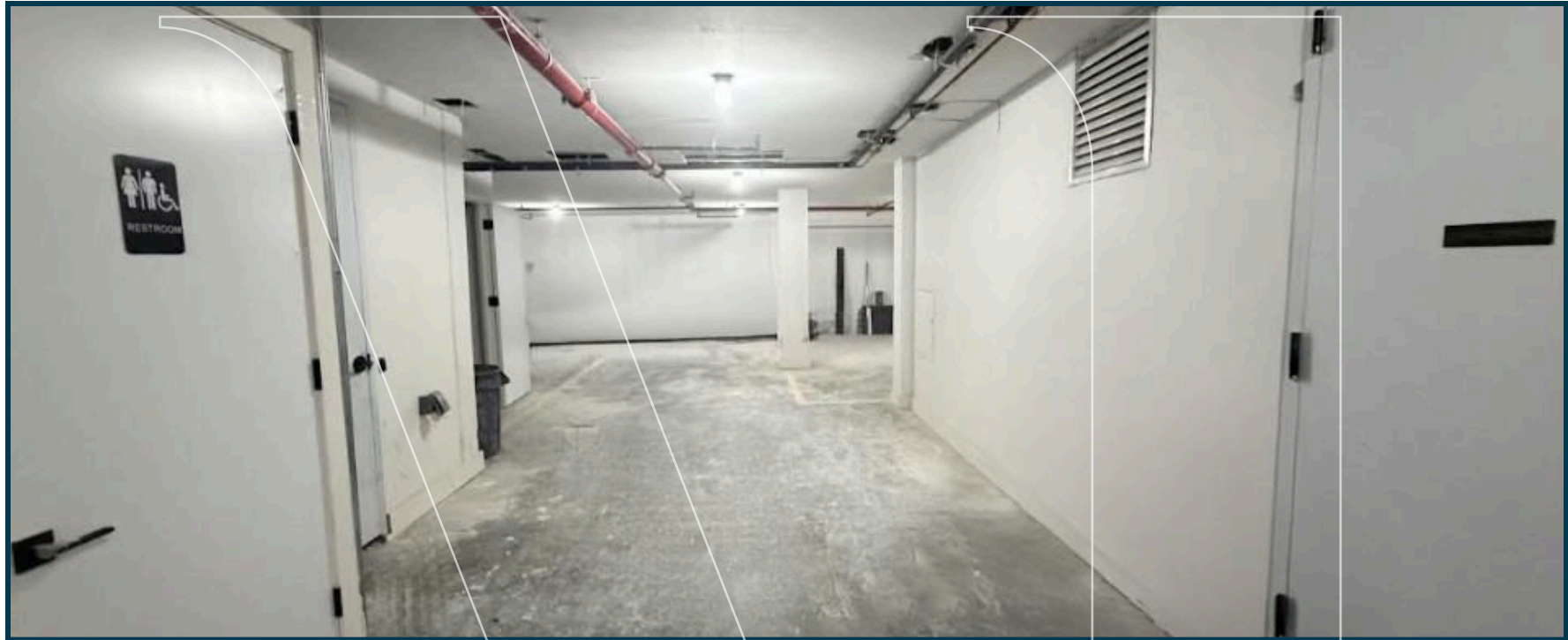
DEMOGRAPHICS

- **Population:** 68,540
- **Median Household Income:** \$107,700
- **Median Home Value:** \$1,118,600

NEIGHBORS

Bonnie's Restaurant, Veselka, Montemug Coffee, TALEA Beer Co, La Môme Chose Wine Shop, Perennials Plant Nursery, Premium Roots New York Skate Shop, Glorious Tattoo NYC, The Workout Plant, SHINE Movement Pilates

INTERIOR PHOTOS



MRG

104 Frost St Brooklyn, NY 11211

FOR MORE INFORMATION
PLEASE CONTACT:

ALBERT ALKHABBAZ

212-314-4684

Albert.a@mrgny.com



New Development Corner Retail Space For Lease