



# 1001

KEYS DRIVE

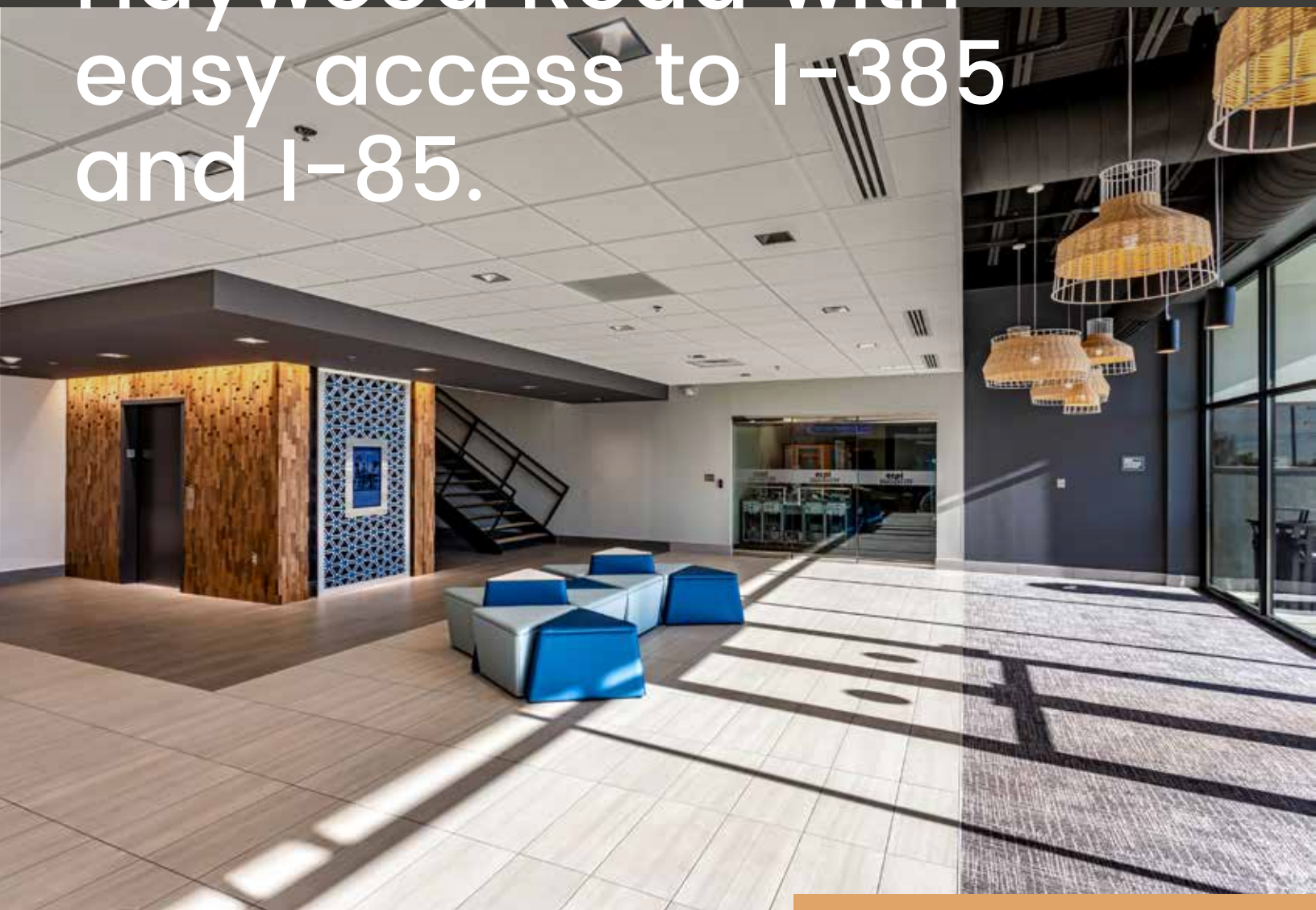
---

Office Space For Sale or Lease



---

1001 Keys Drive is conveniently located off of Frontage Road in close proximity to Haywood Road with easy access to I-385 and I-85.





## PROPERTY DETAILS



### Building Size

±78,925 SF



### Available Space

±35,500 SF 2nd Floor  
±8,925 SF Annex



### Parking

6/1,000 SF



### Lease Rate

\$21.50/SF  
Full Service



### Sale Price

\$8,750,000



### Signage

Building & monument  
signage available



### Renovations

Interior & exterior  
renovations in 2021



### Visibility

High visibility  
from I-385



### Location

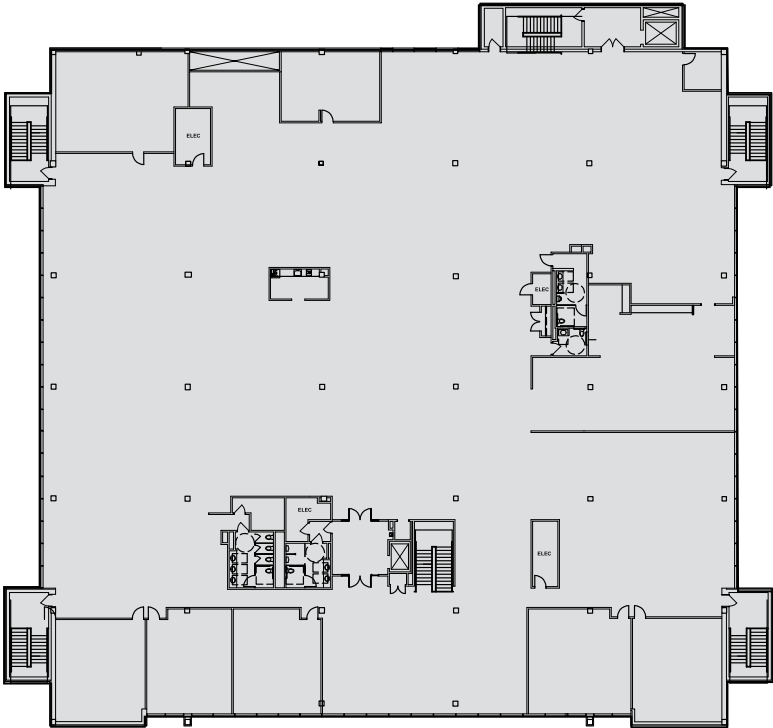
Easy access to  
I-85 & I-385



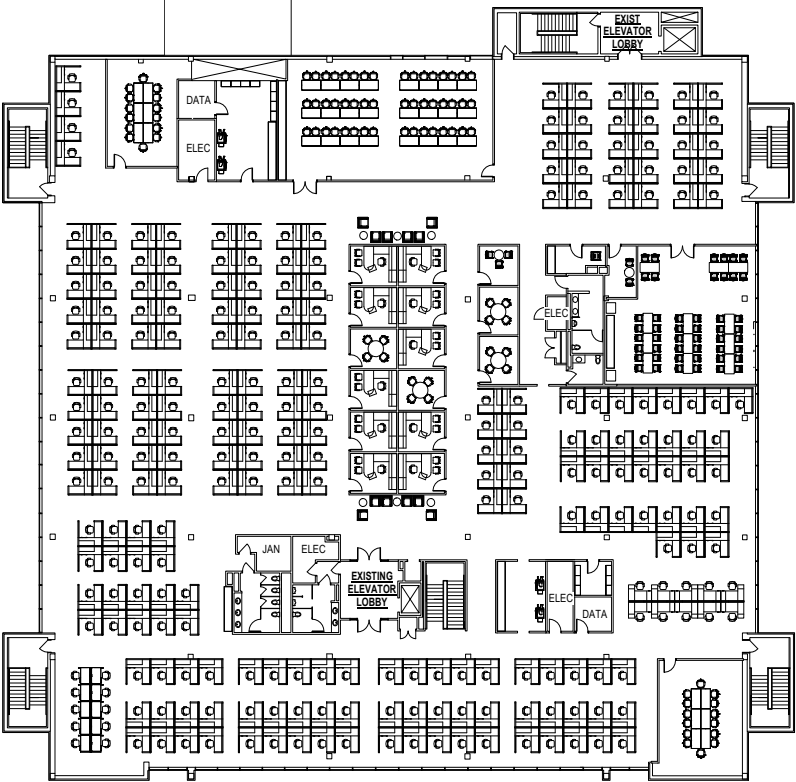
# Space Opportunities | ±8,925 - ±44,425 SF FOR LEASE

Second Floor

±35,500 RSF



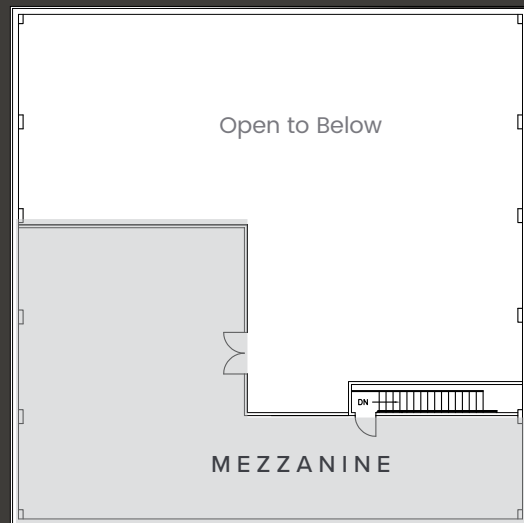
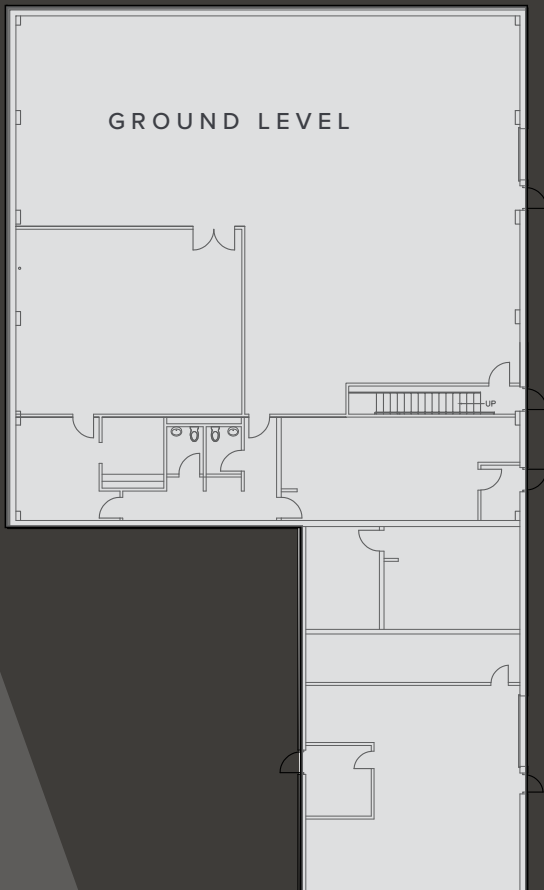
Sample Test Fit



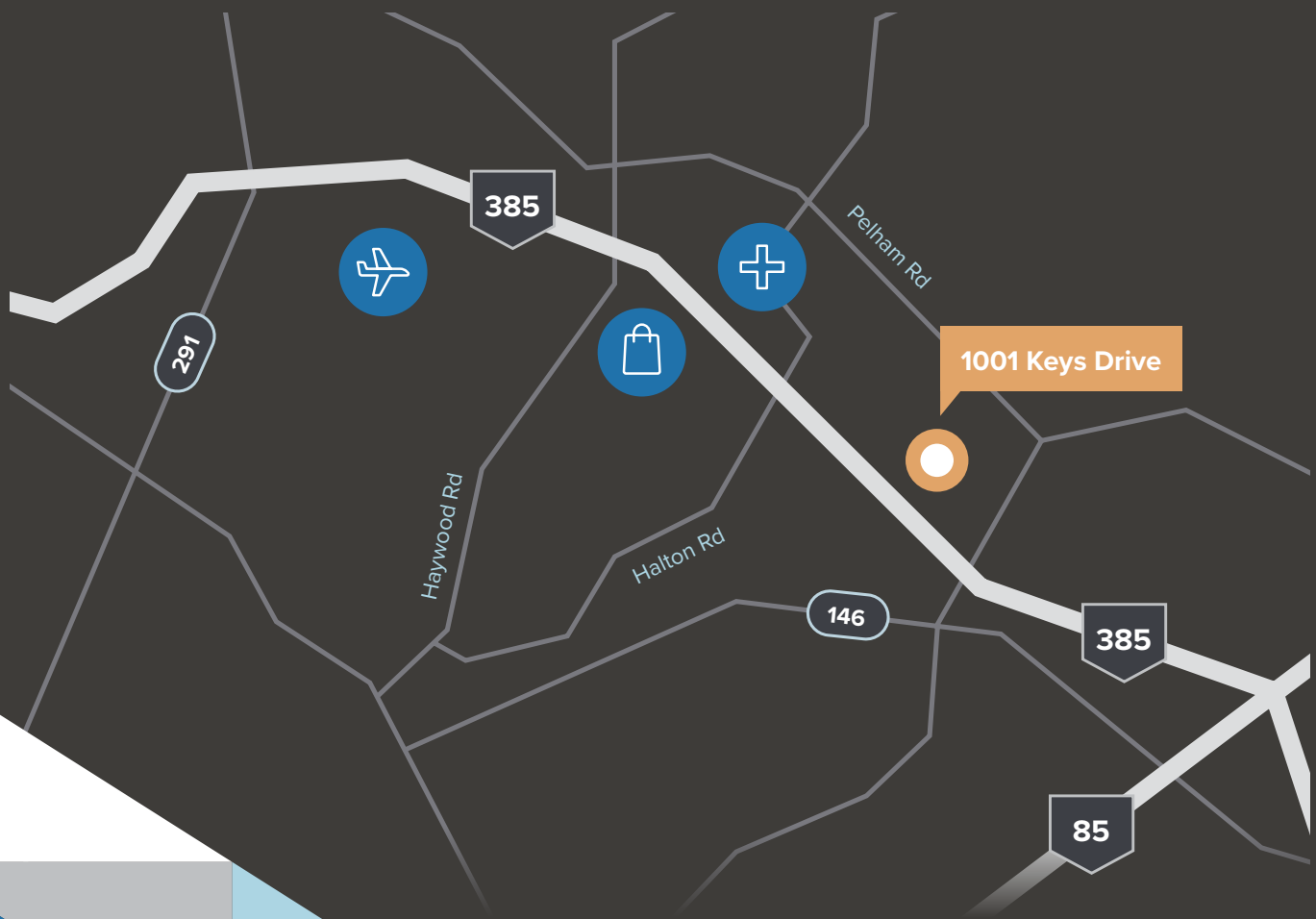


Annex Space

±8,925 RSF

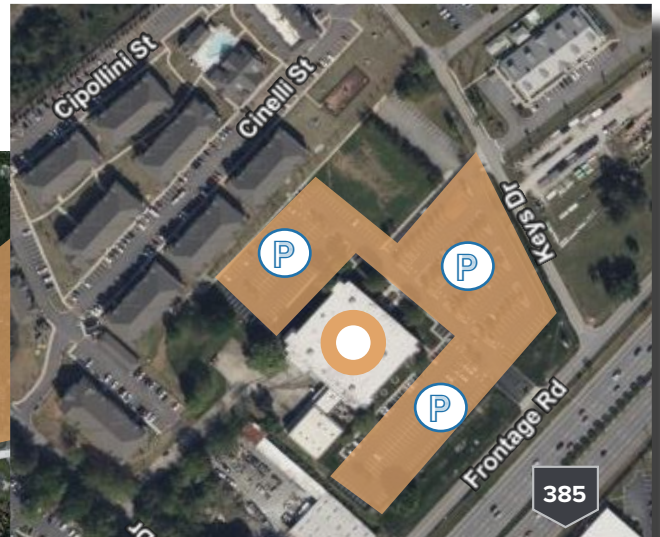


# Convenient Location





1001 Keys Drive features an ideal location with abundant parking.





# 1001

KEYS DRIVE

## For More Information:

---

**Charles Gouch, CCIM SIOR**

Senior Vice President

+1 864 527 6035

[charles.gouch@cbre.com](mailto:charles.gouch@cbre.com)

**Blaine Hart, SIOR**

Senior Vice President

+1 864 527 6035

[charles.gouch@cbre.com](mailto:charles.gouch@cbre.com)

**Shelby Dodson, LEED AP**

First Vice President

+1 864 527 6022

[shelby.dodson@cbre.com](mailto:shelby.dodson@cbre.com)

[WWW.CBRE.US/GREENVILLE](http://WWW.CBRE.US/GREENVILLE)

# CBRE

©2024 CBRE, Inc. All rights reserved. This information has been obtained from sources believed reliable, but has not been verified for accuracy or completeness. Any projections, opinions, or estimates are subject to uncertainty. The information may not represent the current or future performance of the property. You and your advisors should conduct a careful, independent investigation of the property and verify all information. Any reliance on this information is solely at your own risk. CBRE and the CBRE logo are service marks of CBRE, Inc. and/or its affiliated or related companies in the United States and other countries. All other marks displayed on this document are the property of their respective owners. Photos herein are the property of their respective owners and use of these images without the express written consent of the owner is prohibited. PMStudio\_January2024