



FOR SUBLEASE



5665 NW WAGON WAY, SUITE C

Industrial Space Available

± 13,320 SF Sublease | \$8,950/Month Base Rent | \$2,649 Nets

5665 NW Wagon Way, Suite C, Hillsboro, OR 97124

- 3 Year Remaining Sublease Term
- 2,500 SF Mezzanine Storage (**Bonus** - not included in total SF)
- Fenced and Secured Yard Area
- Abundant Parking

SCOTT MILLER

Senior Vice President | Licensed in OR

971-275-0341

scottm@capacitycommercial.com

ALLEN PATTERSON, SIOR

Senior Vice President | Licensed in OR

503-781-4015

allen@capacitycommercial.com



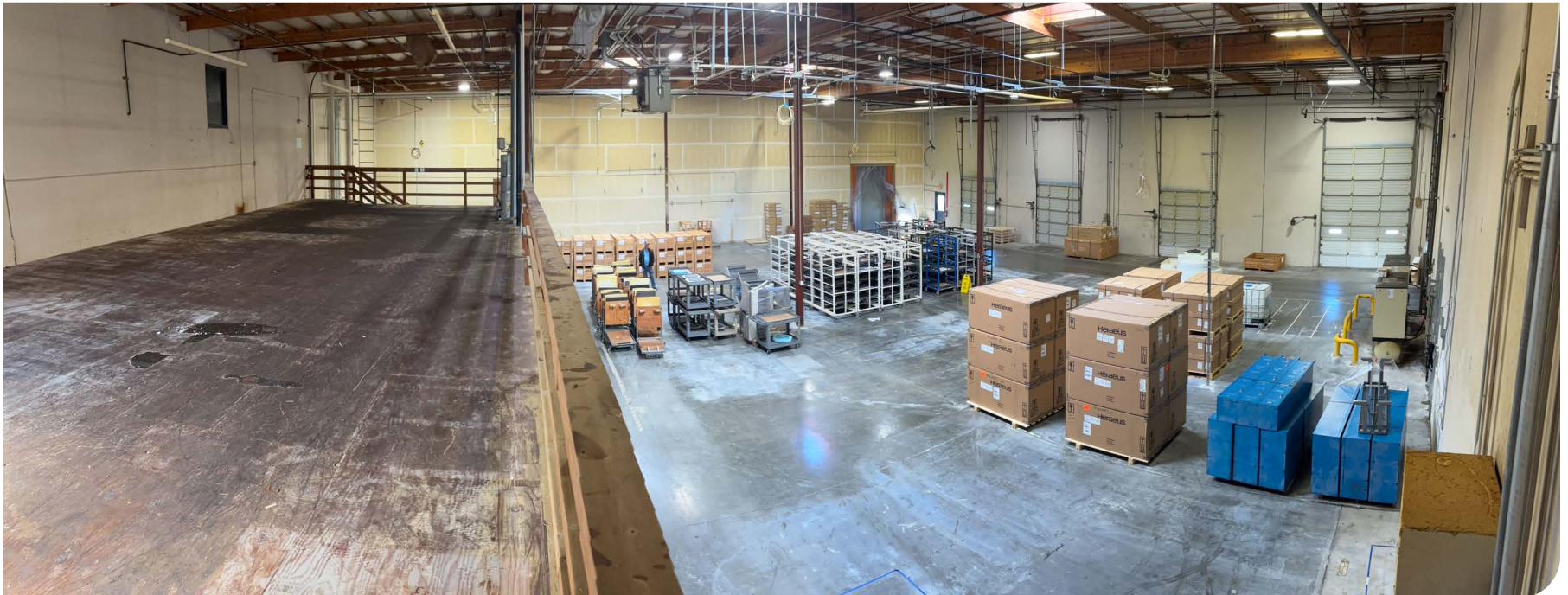
PROPERTY SUMMARY



**FOR
SUBLEASE**

PROPERTY DETAILS

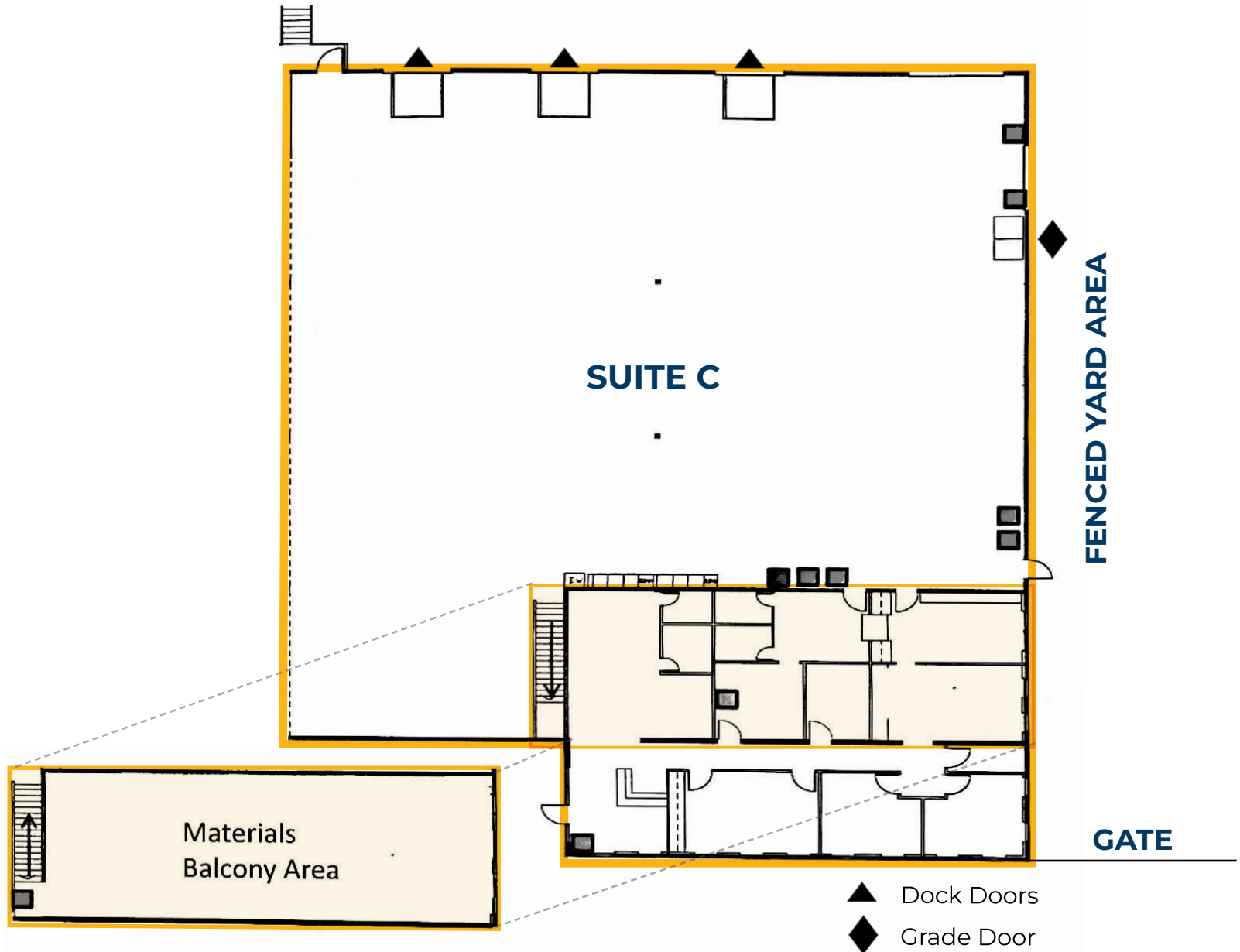
Address	5665 NW Wagon Way, Suite C Hillsboro, OR 97124
Total (SHELL) Sublease	13,320 SF
Warehouse	10,800 SF
Office	2,520 SF
Bonus Mezzanine Storage	2,500 SF (Not included in total SF)
Clear Height	24'
Dock Doors	Three (3)
Grade Door	One (1)
Power	Heavy 3-Phase Power
Base Rent	\$8,950/month
Nets	\$2,649





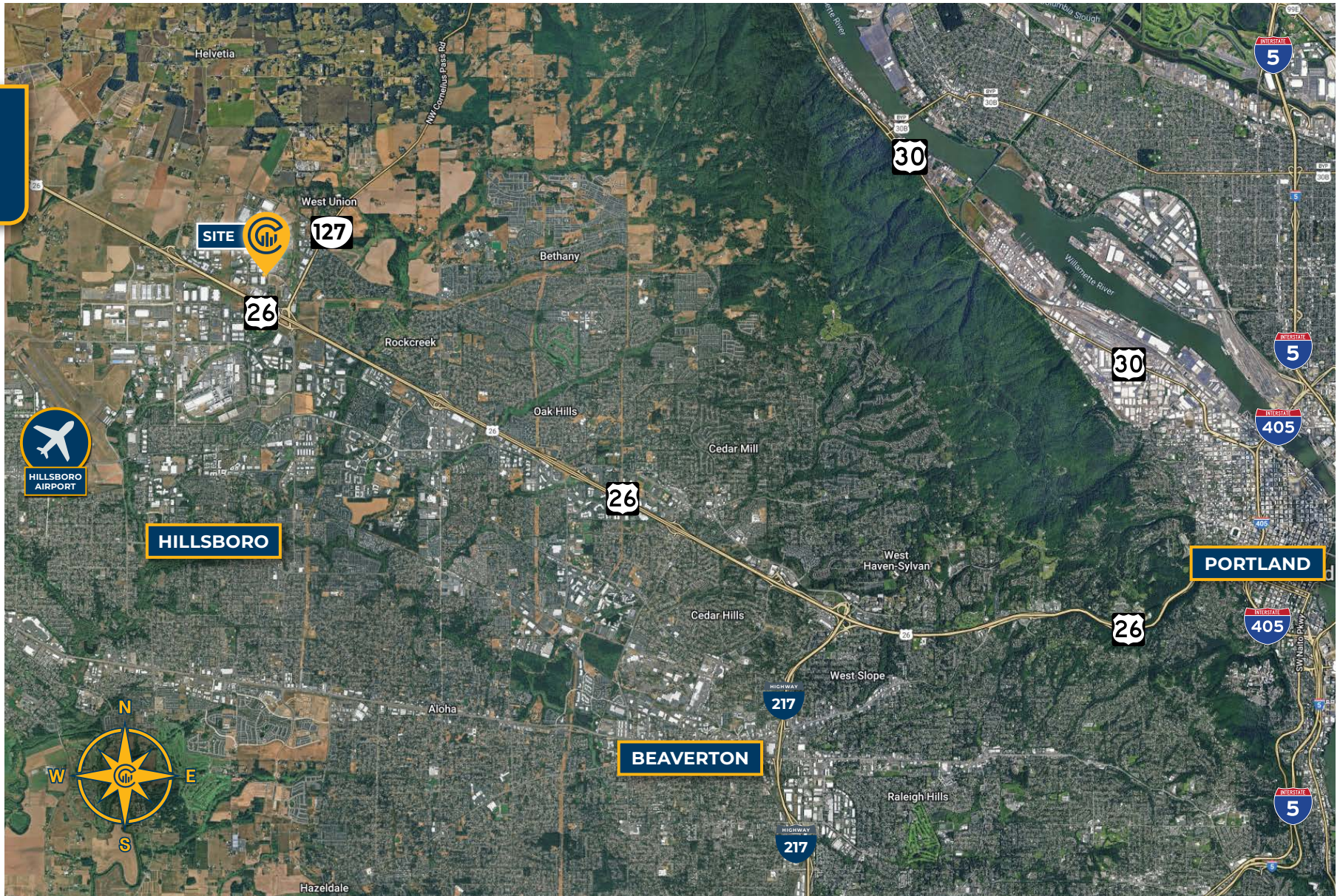
FLOOR PLAN

FLOOR PLAN





LOCAL AERIAL MAP



*Average Daily Traffic Volume | Traffic Counts are Provided by REGIS Online at SitesUSA.com ©2025 | Map data ©2025 Google Imagery ©2025, Airbus, CNES / Airbus, Maxar Technologies, Metro, Portland Oregon, Public Laboratory, State of Oregon, U.S. Geological Survey, USDA/FPAC/GEO



SCOTT MILLER
Senior Vice President | Licensed in OR
971-275-0341
scottm@capacitycommercial.com

ALLEN PATTERSON, SIOR
Senior Vice President | Licensed in OR
503-781-4015
allen@capacitycommercial.com