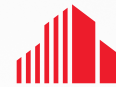


# MULTI-USE BLDG. FOR SALE OR LEASE

4102 South 1900 West, Roy, UT



CUSHMAN &  
WAKEFIELD

**SELLER MOTIVATED!**



## Property Highlights

- Size: 26,400 +/- SF
- Sales Price: \$3,600,000
- Lease Rate: \$1.25 PSF/NNN
- Ideal for flex space conversion, corporate headquarters, call centers, or professional services
- High visibility building on 1900 West with easy access to I-15 and major thoroughfares
- Ample Parking



## Contact

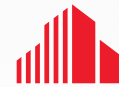
CRAIG BOYER  
Associate Director / Retail Specialist  
+1 801 698 3333  
[craig.boyer@cushwake.com](mailto:craig.boyer@cushwake.com)

170 South Main, Suite 1600  
Salt Lake City, UT  
Main +1 801 525 3000  
[cushmanwakefield.com](http://cushmanwakefield.com)



# MULTI-USE BLDG. FOR SALE OR LEASE

4102 South 1900 West, Roy, UT



CUSHMAN &  
WAKEFIELD



## Contact

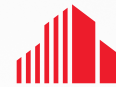
CRAIG BOYER  
Associate Director / Retail Specialist  
+1 801 698 3333  
[craig.boyer@cushwake.com](mailto:craig.boyer@cushwake.com)

170 South Main, Suite 1600  
Salt Lake City, UT  
Main +1 801 525 3000  
[cushmanwakefield.com](http://cushmanwakefield.com)



# MULTI-USE BLDG. FOR SALE OR LEASE

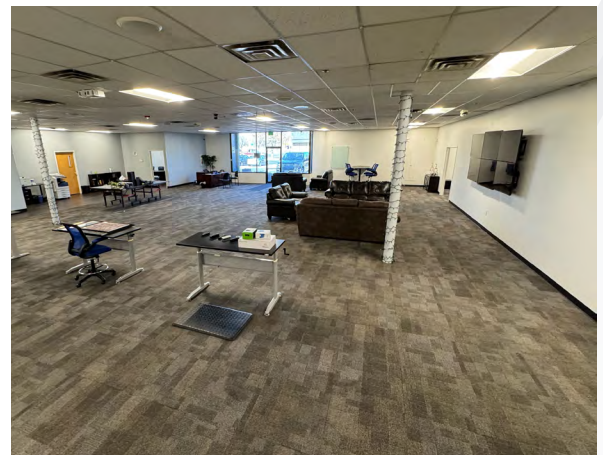
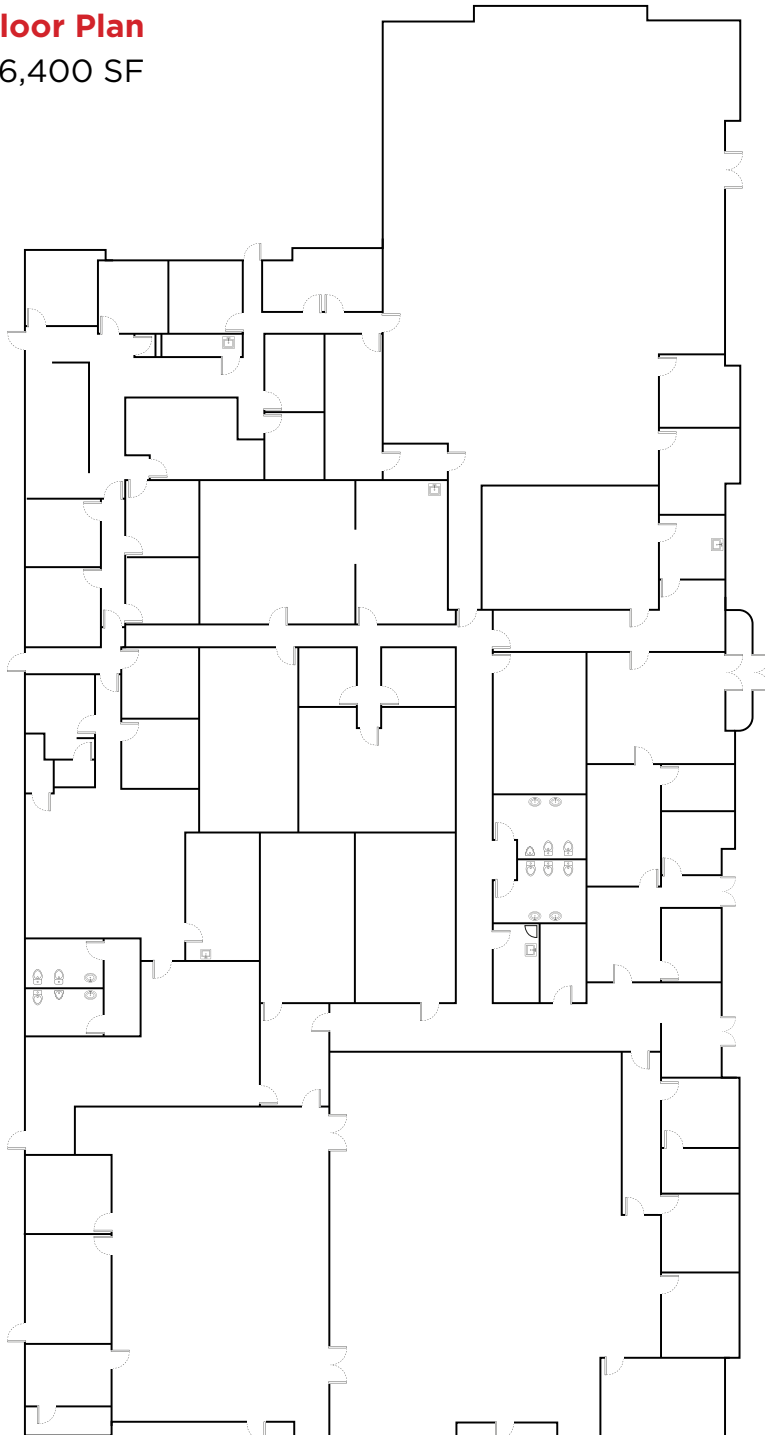
4102 South 1900 West, Roy, UT



**CUSHMAN &  
WAKEFIELD**

## Floor Plan

26,400 SF



## Contact

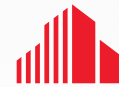
CRAIG BOYER  
Associate Director / Retail Specialist  
+1 801 698 3333  
[craig.boyer@cushwake.com](mailto:craig.boyer@cushwake.com)

170 South Main, Suite 1600  
Salt Lake City, UT  
Main +1 801 525 3000  
[cushmanwakefield.com](http://cushmanwakefield.com)



# MULTI-USE BLDG. FOR SALE OR LEASE

4102 South 1900 West, Roy, UT



CUSHMAN &  
WAKEFIELD



## Contact

CRAIG BOYER  
Associate Director / Retail Specialist  
+1 801 698 3333  
[craig.boyer@cushwake.com](mailto:craig.boyer@cushwake.com)

170 South Main, Suite 1600  
Salt Lake City, UT  
Main +1 801 525 3000  
[cushmanwakefield.com](http://cushmanwakefield.com)