

531 Davis Drive, Newmarket



MEDICAL SPACE AVAILABLE FOR LEASE

For more information, please contact:

Gordon Katz

Property Manager

PAR-Med Property Services Inc.

Phone: 416-364-5959 Ext. 429

E-Mail: gkatz@par-med.com

Gregory Palin

Broker and REALTOR®

PAR-Med Realty Limited, Brokerage

Phone: 416-364-5959 Ext. 421

E-Mail: gpalin@par-med.com



Welcome to 531 Davis Drive

Presenting a distinguished four-story medical edifice nestled in the heart of Newmarket, less than a kilometer away from the Southlake Regional Health Centre. This prime establishment offers an extensive array of healthcare amenities, encompassing a state-of-the-art laboratory, fully stocked pharmacy, and a convenient walk-in clinic. Call today to arrange a viewing and get personalized information on what type of inducements and deals we can offer to make 531 Davis Drive the new home of your medical practice or business.

Building Highlights & Amenities

- Paid Parking Available
- Patient Drop-off Area
- Handicap Accessible
- Public Transit In Front
- Many Medical Specialties On Site
- 2 Elevators For Use In Building



Location



3.5km from Highway
404



500M away from Newmarket
GO Transit Station



Net Rent

\$16.00 per square foot

Additional Rent

\$16.14 per square foot

Parking

Above ground parking lot immediately beside the building available for \$3.00.

Featured Available Space

Suite 201 & 202 (Contiguous Space) - 1,684 rentable sq.ft.

South-West facing corner suite with large windows and modern finishes.

Suite 305 - 1,447 rentable sq.ft.

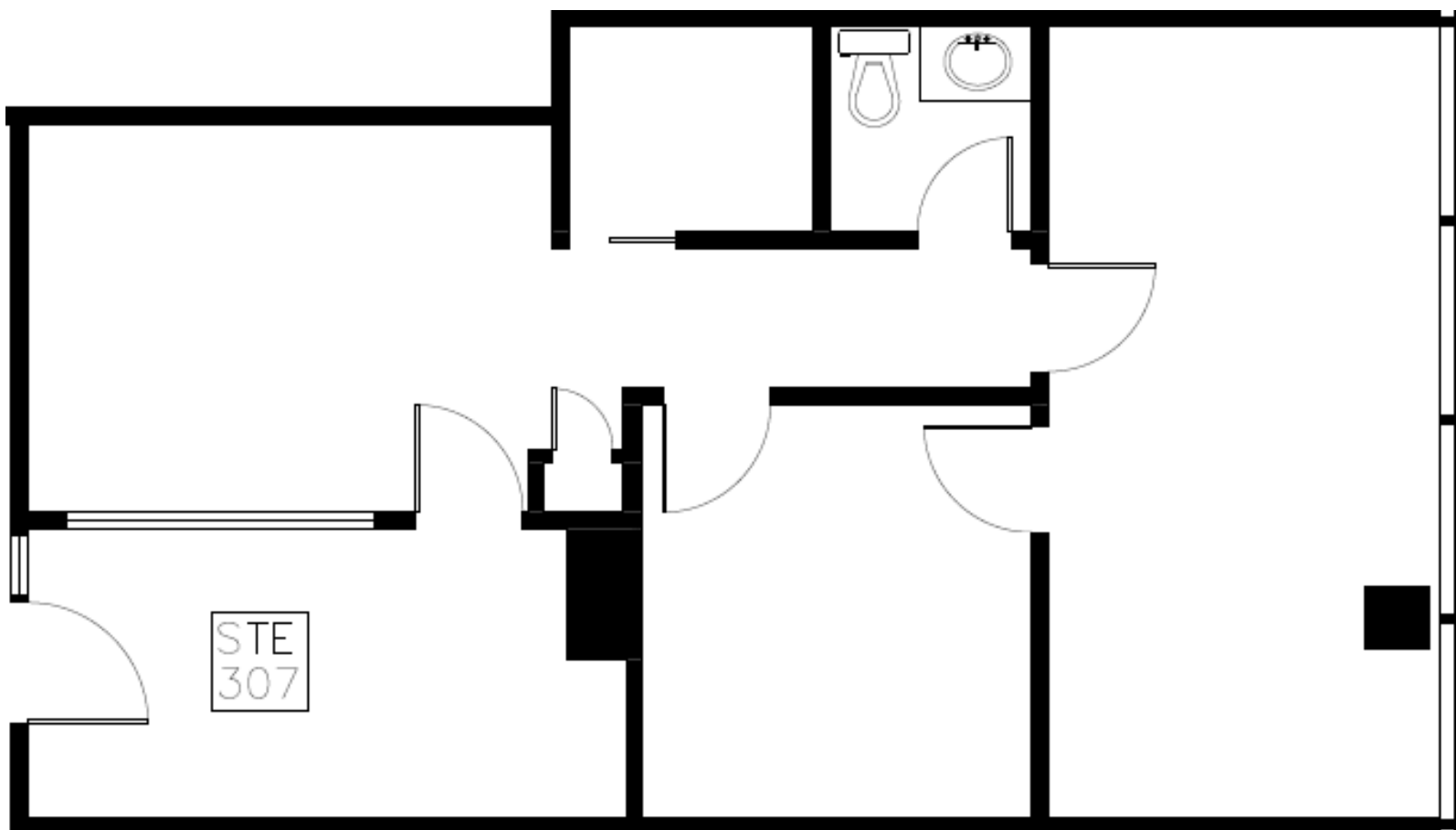
Spacious and bright, featuring large north-east facing windows.

Suite 307 - 759 rentable sq.ft.

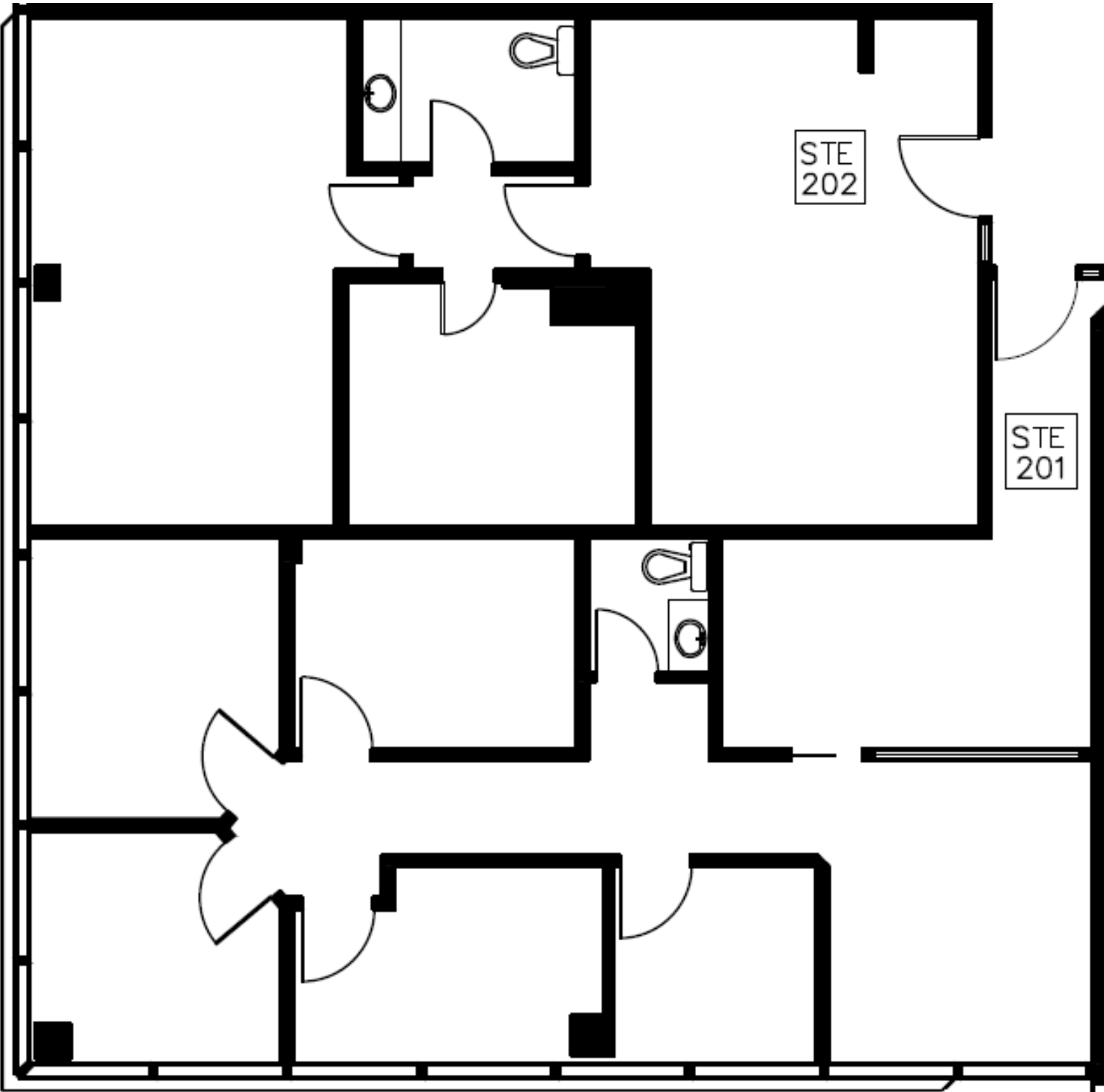
North facing suite with modern finishes, and lots of natural light.

Suite 407 - 702 rentable sq.ft.

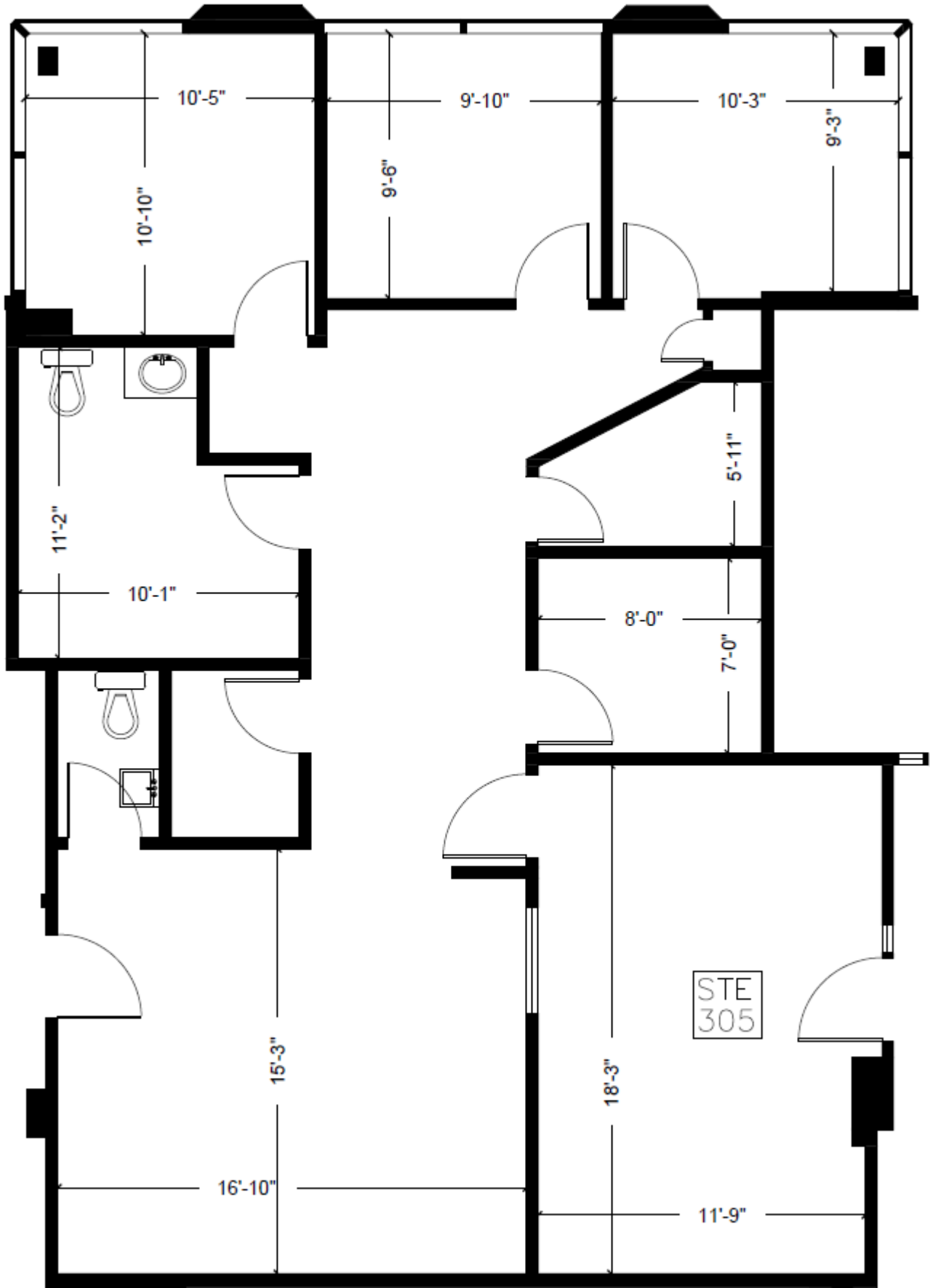
Bright medical suite with natural light and large east-facing windows.



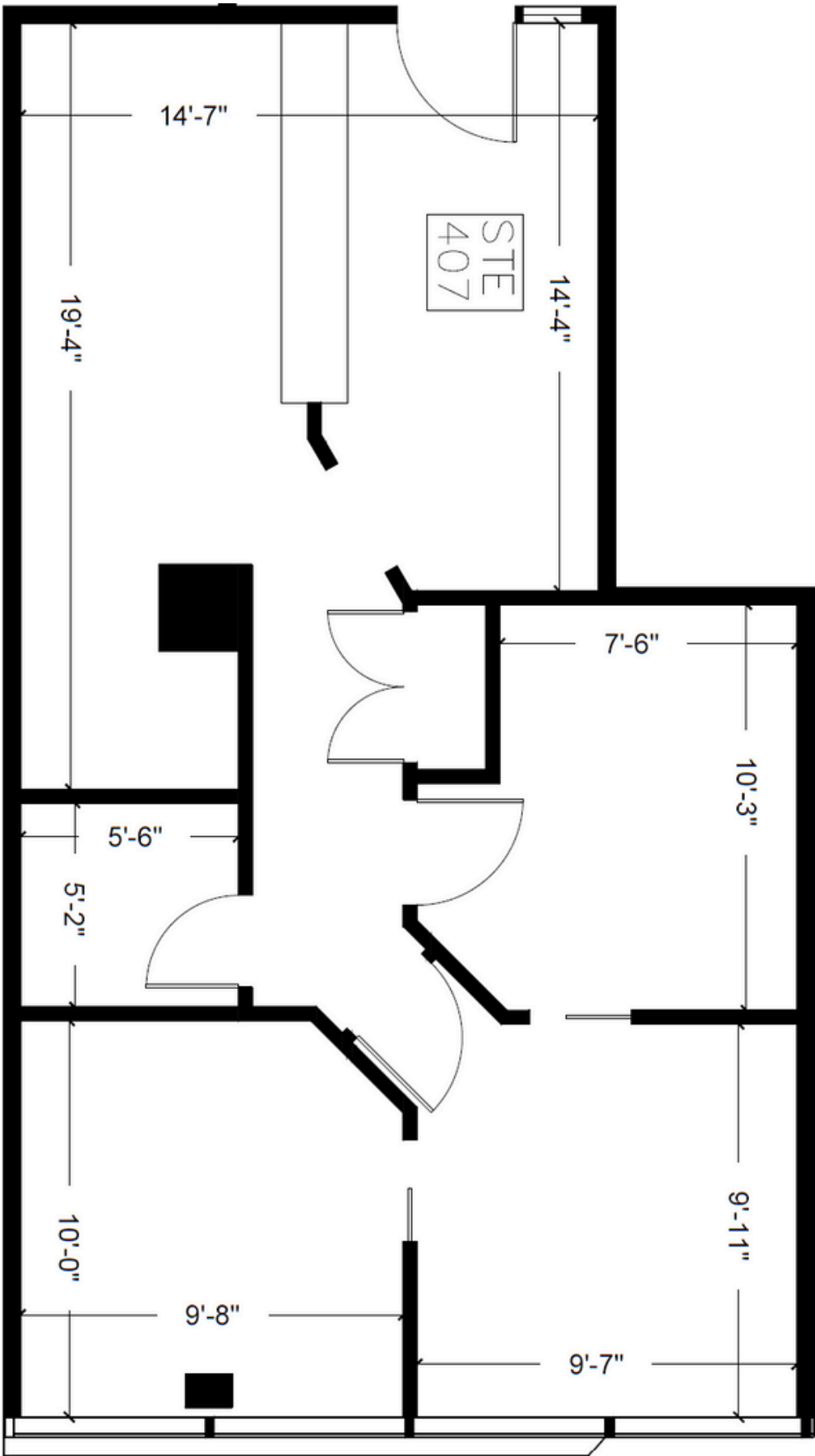
Suite 201 & 202 - Floor Plan



Suite 305 - Floor Plan



Suite 407 - Floor Plan



Leasing Inquiries for: 531 Davis Drive, Newmarket

For more information, please contact:

Gordon Katz

Property Manager

PAR-Med Property Services Inc.

Phone: 416-364-5959 Ext. 429

E-Mail: gkatz@par-med.com

Gregory Palin

Broker and REALTOR®

PAR-Med Realty Limited, Brokerage

Phone: 416-364-5959 Ext. 421

E-Mail: gpalin@par-med.com



*Scan to view more
available suites*

