



**HOKANSON
COMPANIES INC.**
INVESTMENT & CORPORATE REAL ESTATE

FOR LEASE

AVAILABLE OFFICE/LAB/MEDICAL SPACE 1201 COLUMBIA ROAD, PLAINFIELD, IN

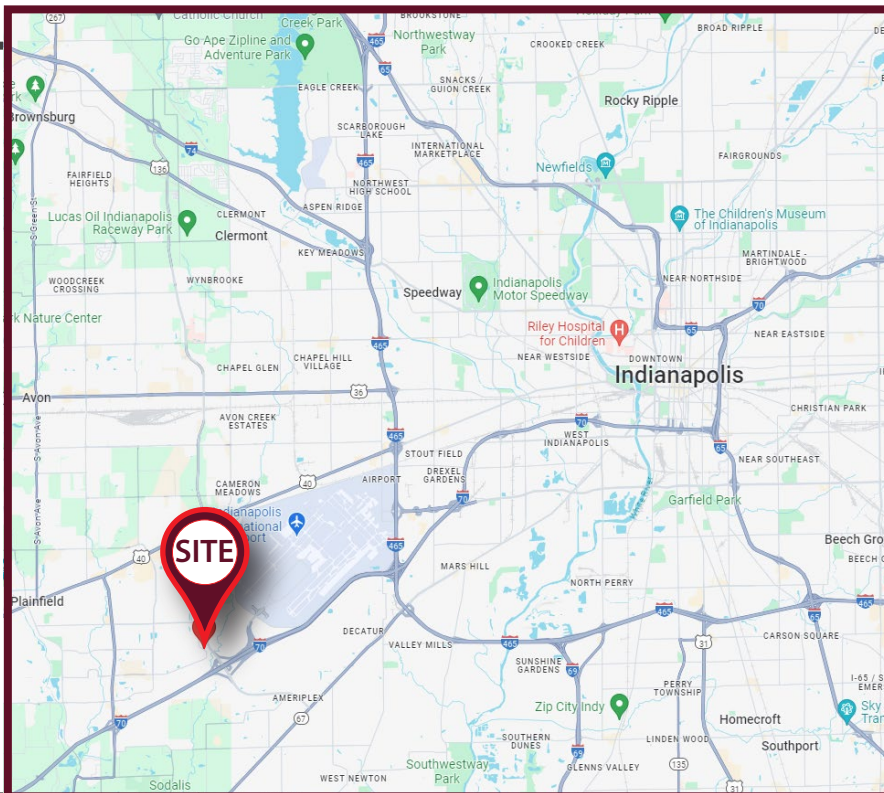


Property Highlights

- **2,617 SF Available (Shell Condition)**
- Includes Building Signage
- Dedicated space entrance with ample parking
- Close proximity to the Indianapolis International Airport
- Easy access to Ronald Reagan Parkway & I-70
- Numerous retail amenities, commercial businesses and housing in close proximity
- Customize your preferred floor plan with a generous provided Tenant Improvement Allowance
- Anchor Tenant:



**Federal Aviation
Administration**



FOR MORE INFORMATION

Stephen J. Adams
Executive Vice President
(317) 633-8063
sja@hokansoninc.com

William Simon
Associate Broker
(812) 457-2320
william.simon@hokansoninc.com



**HOKANSON
COMPANIES INC.**

Hokanson Companies, Inc.
10201 N. Illinois Street, Suite 350
Carmel, Indiana 46290
www.hokansoninc.com

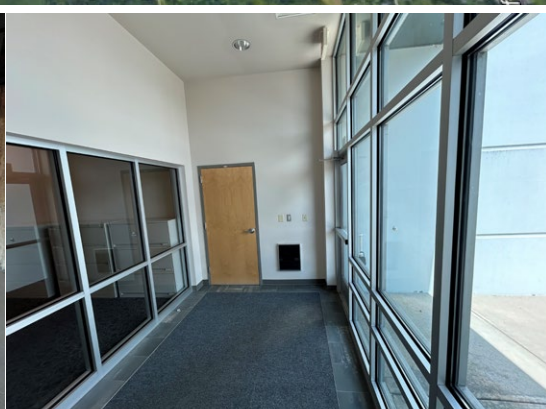
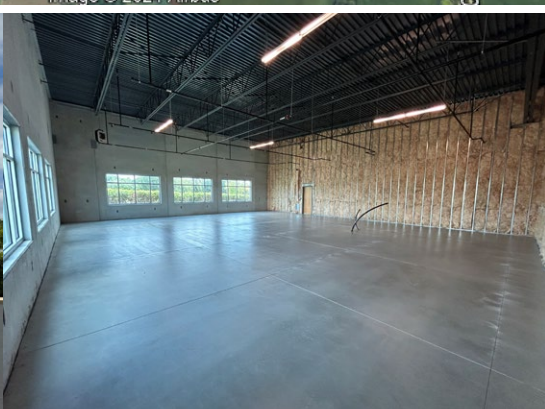
The information obtained herein was obtained from sources considered reliable. We cannot be responsible, however, for error, omission, prior sale, withdrawal from the market, or change in price. Broker makes no representation as to the environmental condition of the property and recommends purchaser's independent investigation.



**HOKANSON
COMPANIES INC.**
INVESTMENT & CORPORATE REAL ESTATE

FOR LEASE

AVAILABLE OFFICE/LAB/MEDICAL SPACE 1201 COLUMBIA ROAD, PLAINFIELD, IN



FOR MORE INFORMATION

Stephen J. Adams
Executive Vice President
(317) 633-8063
sja@hokansoninc.com

William Simon
Associate Broker
(812) 457-2320
william.simon@hokansoninc.com



**HOKANSON
COMPANIES INC.**

Hokanson Companies, Inc.
10201 N. Illinois Street, Suite 350
Carmel, Indiana 46290
www.hokansoninc.com

The information obtained herein was obtained from sources considered reliable. We cannot be responsible, however, for error, omission, prior sale, withdrawal from the market, or change in price. Broker makes no representation as to the environmental condition of the property and recommends purchaser's independent investigation.