



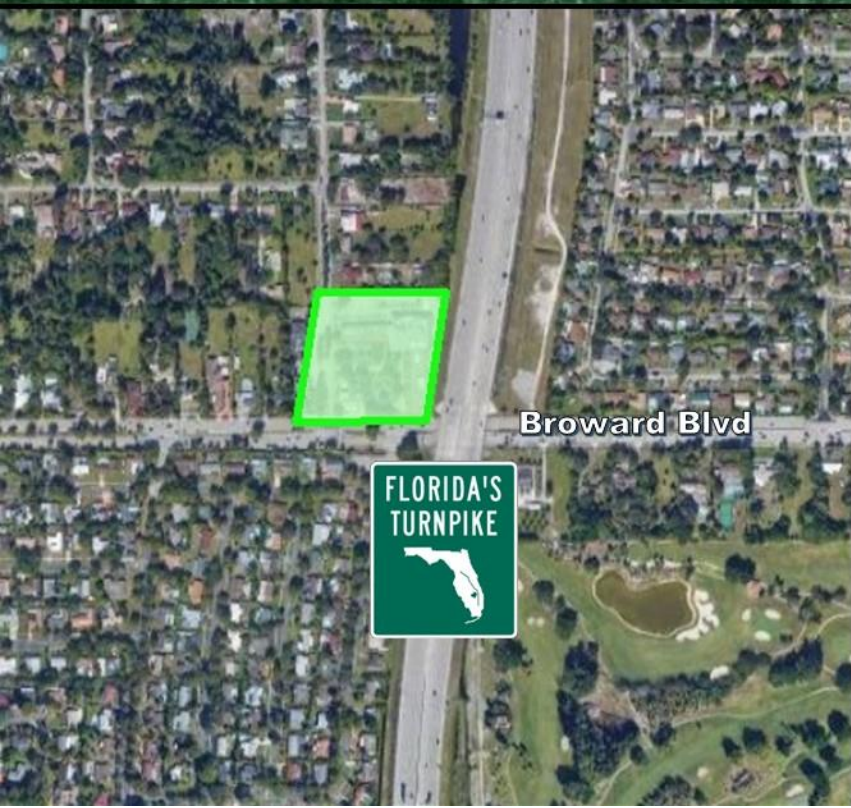
## PLANTATION VILLAGE

5201-5247 W BROWARD BLVD

PLANTATION, FL 33317



# PRIME RETAIL SPACE FOR LEASE



# PROPERTY OVERVIEW

<b>BUILDING ADDRESS</b>	5201-5247 W Broward Blvd, Plantation, FL 33317
<b>LEASABLE AREA</b>	736-3,600 Square Feet
<b>TRAFFIC COUNT</b>	43,000+ on Broward Blvd, 210,000+ on Florida's Turnpike
<b>PARCEL</b>	50-41-02-01-0010
<b>MARKET (MSA)</b>	Fort Lauderdale - FL
<b>ZONING</b>	B1-P
<b>ACCESSIBILITY</b>	Located just off Florida's Turnpike and minutes from I-95 and I-595
<b>PARKING</b>	293 Parking Spaces   Parking Ratio 7.75/1,000 SF
<b>MAJOR FEATURES</b>	Busy missed-use shopping center with excellent frontage onto Broward Drive and visibility from Florida's Turnpike, long-term tenants, fresh and dedicated property maintenance team, below-market lease rates, excellent window views, abundant parking, office, retail or restaurant spaces available for immediate occupancy.

## PROPERTY PHOTOS



## INTERIOR

- 736 SF – 3,600 SF AND SPACES INBETWEEN



FOR PROPERTY INQUIRIES AND  
SHOWINGS PLEASE CALL  
TOM BUSH:

**N.E.G. Property Services, Inc.**  
Licensed Real Estate Broker  
**Tom Bush**  
954-491-2281  
[www.negproperty.com](http://www.negproperty.com)

