



Colliers



4910 Corporate Centre Drive Lawrence, Kansas

Lease Rate:

\$13.95/SF
NNN (est. \$10.56/SF)

Lawrence's only true
Class A office building



West Lawrence
location



Ample parking



Abundant
natural light

Accelerating success.

Property Profile

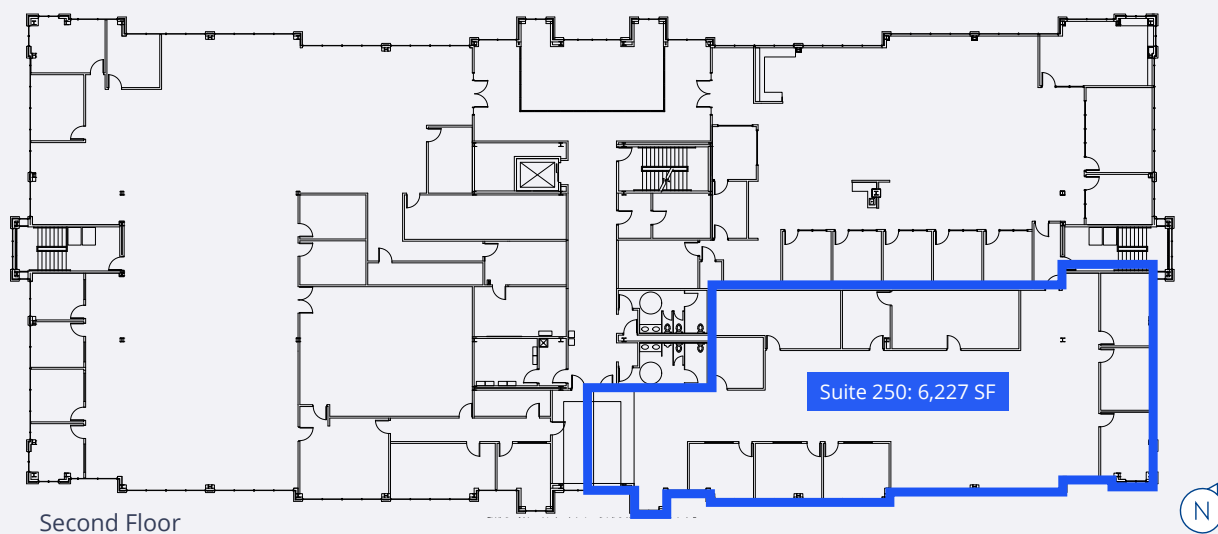


Features

- Located in West Lawrence at 18th Street & Wakarusa Drive
- High visibility with new monument signage planned
- Easy access to South Lawrence Trafficway and the University of Kansas
- Situated near banking and dining
- Building equipped with an elevator, sprinkler system, lobby with directory signage, mail room with vending, and common area restrooms
- Features include abundant natural light, high-end finishes, and ample parking
- As-is delivery with TI financing available

Available Space

- 6,227 SF
- Suite 250: \$12,718.65/month



Contact



Allison Vance Moore, SIOR

Senior Vice President
+1 785 865 3924
allison.moore@colliers.com

Colliers

Colliers Lawrence
3705 Clinton Parkway, Suite 201
Lawrence, Kansas 66047
+1 785 865 5100
colliers.com/lawrence

This document/email has been prepared by Colliers for advertising and general information only. Colliers makes no guarantees, representations or warranties of any kind, expressed or implied, regarding the information including, but not limited to, warranties of content, accuracy and reliability. Any interested party should undertake their own inquiries as to the accuracy of the information. Colliers excludes unequivocally all inferred or implied terms, conditions and warranties arising out of this document and excludes all liability for loss and damages arising there from. This publication is the copyrighted property of Colliers and /or its licensor(s). © 2025. All rights reserved. This communication is not intended to cause or induce breach of an existing listing agreement.