



201 - 301
Piedmont Grove Park
Greenville, SC

Marcus Cornelius, SIOR
+1864 320 0445
marcus.cornelius@cbre.com

Campbell Lewis, SIOR
+1404 312 1403
campbell.lewis@cbre.com

Site Plan



Axial Crosspoint consists of three rear-load buildings totaling over 558,000 square feet with ample employee parking and trailer parking. The three buildings measure 283,242, 73,271 and 201,649 square feet and provide the flexibility to accommodate multiple tenants. These features, along with modern clear heights, satisfy both local and regional distribution tenants in addition to light manufacturing and assembly users.



Ready for Occupancy June 2024



201 Piedmont Grove Park



FULLY LEASED

101 Piedmont Grove Park



301 Piedmont Grove Park

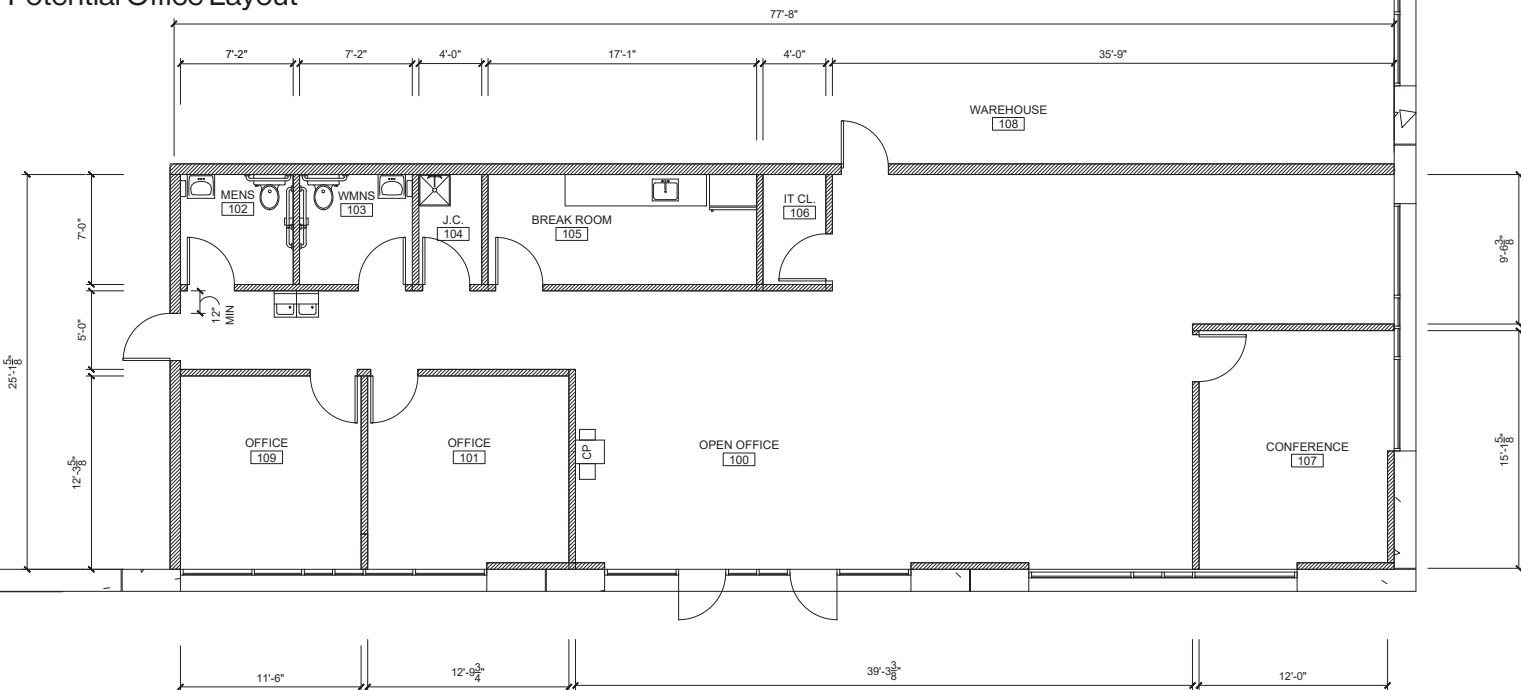
Property Details

Building 1 - 201 Piedmont Grove Park

- Available Space: 198,269 SF
- Building Size: 283,242 SF
- Spec Office Space: BTS
- Dimensions: 260' x 1,080'
- Clear Height: 36'
- Dock Doors: 43 Available
- Dock Packages: 4, with 35K lb levelers
- Drive-In Doors: 1 Available
- Column Spacing: 54' x 50' (60' speed bay)
- Slab Thickness: 7"
- Sprinkler: ESFR
- Lighting: LED
- Auto Parking: 216 Spaces
- Trailer Parking: 47 Spaces
- Concrete tilt wall
- Rear-load configuration



Potential Office Layout



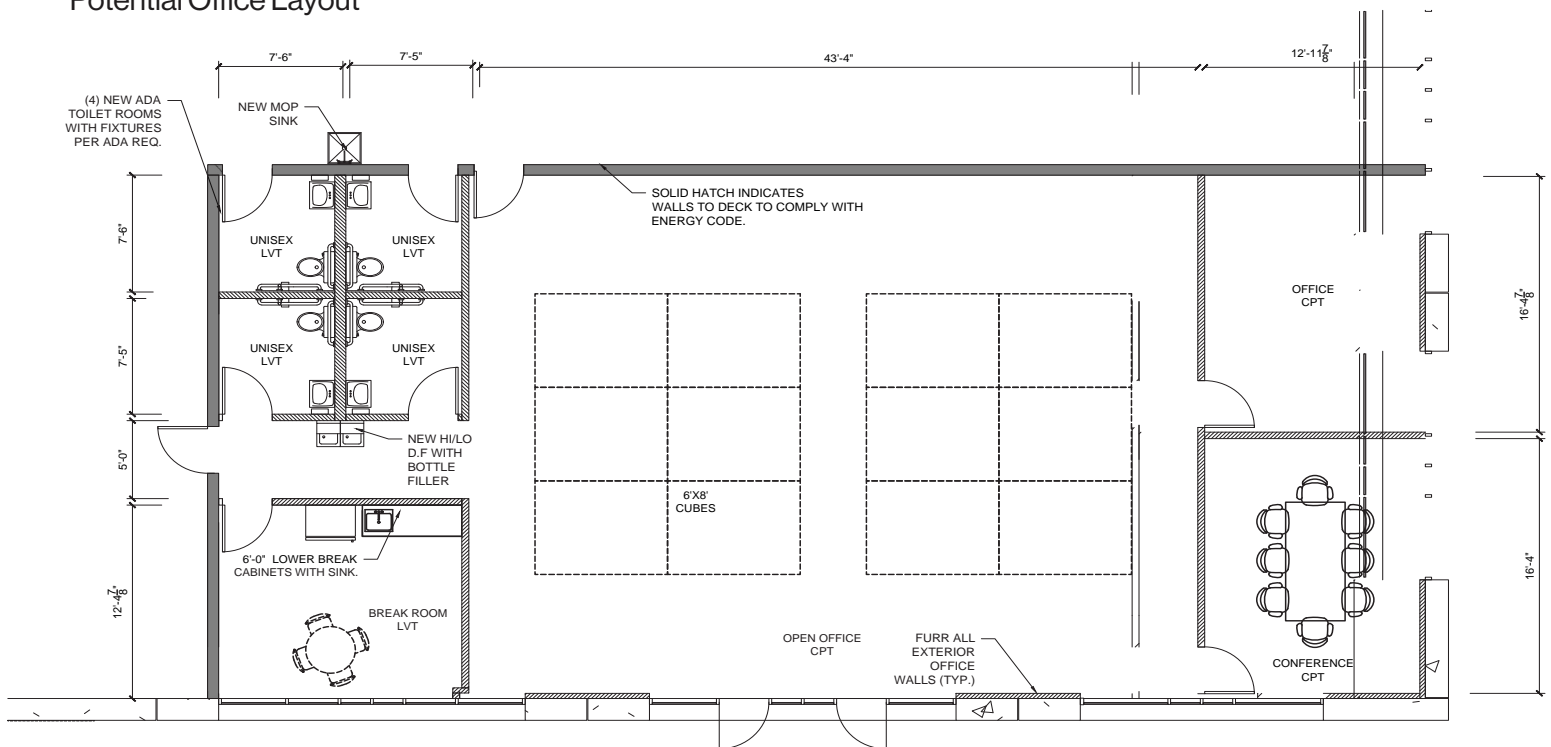
Property Details

Building 3 - 301 Piedmont Grove Park

- Available Space: 77,291 SF
- Minimum Divisibility: 32,726 SF
- Building Size: 201,649 SF
- Spec Office Space: BTS
- Dimensions: 210' x 950'
- Clear Height: 36'
- Dock Doors: 21 Available
- Dock Packages: 2, with 35K lb levelers
- Drive-In Doors: 0 Available (1 Knock-Out)
- Column Spacing: 52' x 50' (60' speed bay)
- Slab Thickness: 7"
- Sprinkler: ESFR
- Lighting: LED
- Auto Parking: 196 Spaces
- Trailer Parking: 12 Spaces
- Concrete tilt wall
- Rear-load configuration

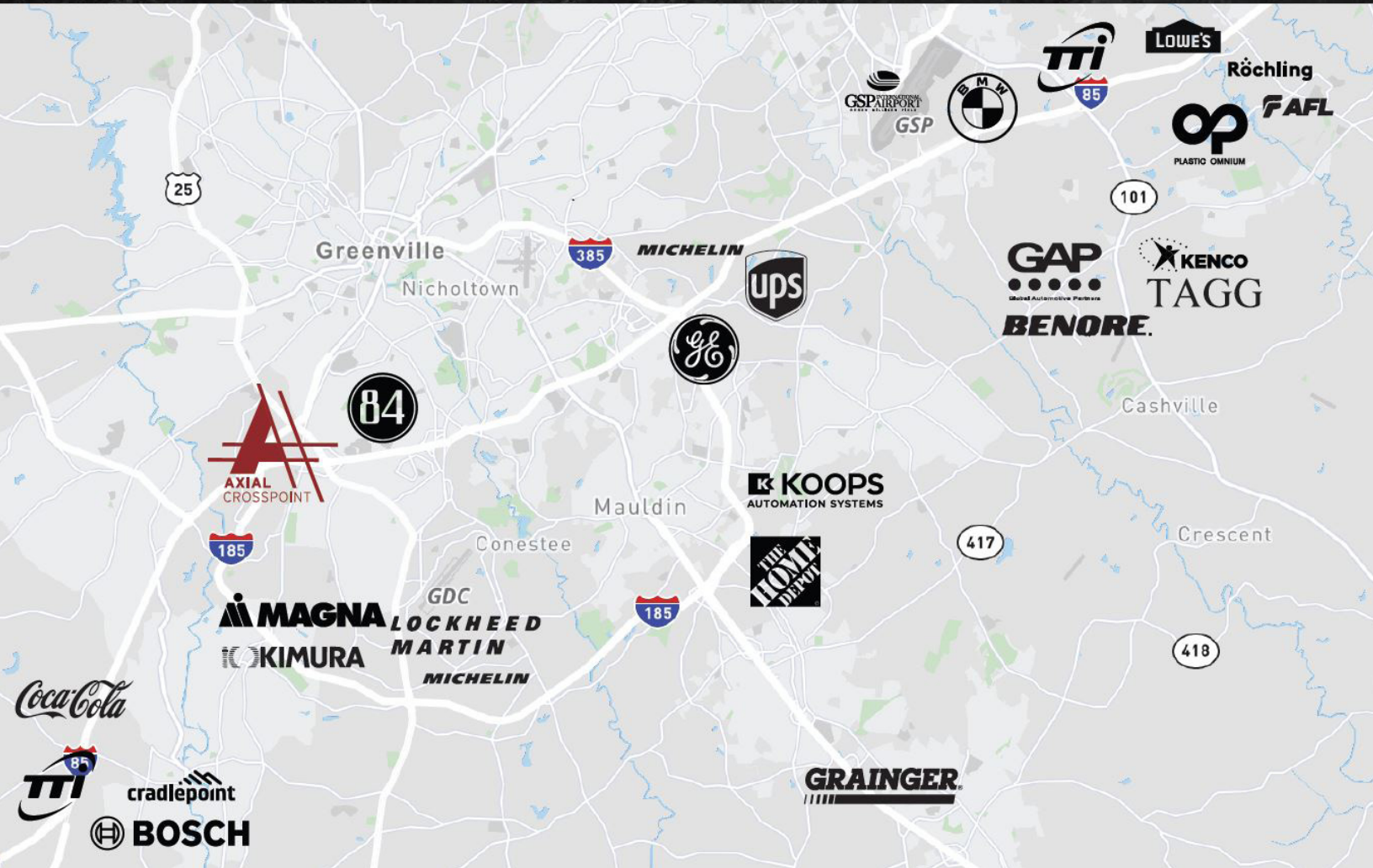


Potential Office Layout



AXIAL CROSSPOINT

BY CRESCENT
COMMUNITIES



Midpoint of the East Coast between
Miami and New York

Located along the I-85
corridor between Charlotte
and Atlanta

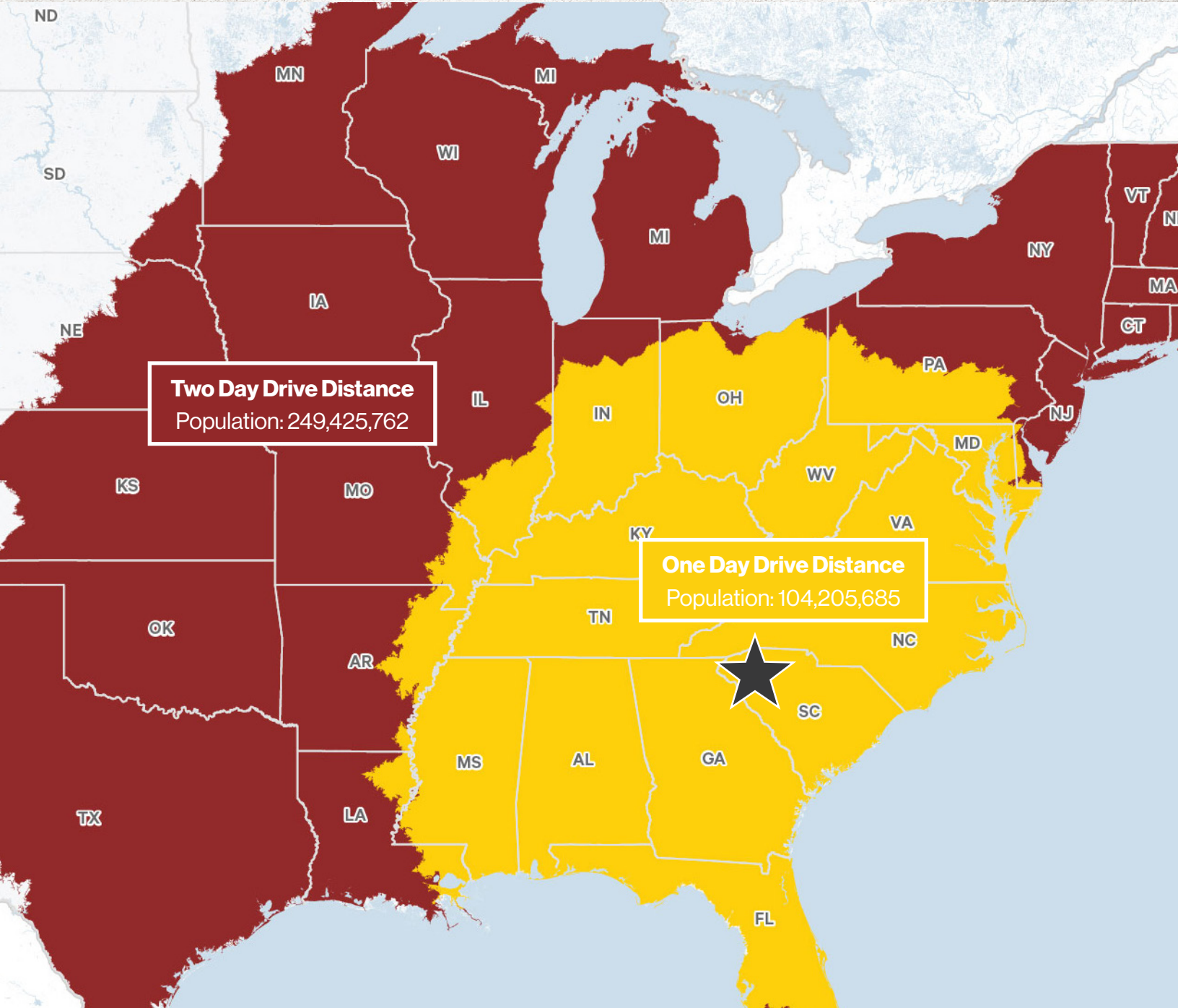
More than 520 international
companies with a presence
in Greenville-Spartanburg

Market has averaged roughly 5
million square feet of positive net
absorption during the past five years

Industrial market measures
approximately 201 million
square feet

Excellent last mile location
only 4.9 miles from
Downtown Greenville

Drive Time Map



I-85
1.1 Miles

Greenville
4.5 Miles

UPS Freight
14.0 Miles

GSP Airport
15.4 Miles

FedEx Freight
20.5 Miles

Inland Port
21.7 Miles



FOR MORE INFO CONTACT:

Marcus Cornelius, SIOR
+1864 320 0445
marcus.cornelius@cbre.com

Campbell Lewis, SIOR
+1404 312 1403
campbell.lewis@cbre.com

© 2022 CBRE, Inc. All rights reserved. This information has been obtained from sources believed reliable, but has not been verified for accuracy or completeness. You should conduct a careful, independent investigation of the property and verify all information. Any reliance on this information is solely at your own risk. CBRE and the CBRE logo are service marks of CBRE, Inc. All other marks displayed on this document are the property of their respective owners, and the use of such logos does not imply any affiliation with or endorsement of CBRE. Photos herein are the property of their respective owners. Use of these images without the express written consent of the owner is prohibited