



For Lease

Flex/Office Space

David F. Choate, III

Executive Vice President
+1 603 433 7100
david.choate@colliers.com

Abigail K. Bachman

Senior Associate
+1 603 206 9644
abby.bachman@colliers.com



500 Market Street, Suite 9
Portsmouth, NH 03801
+1 603 433 7100
colliersnh.com

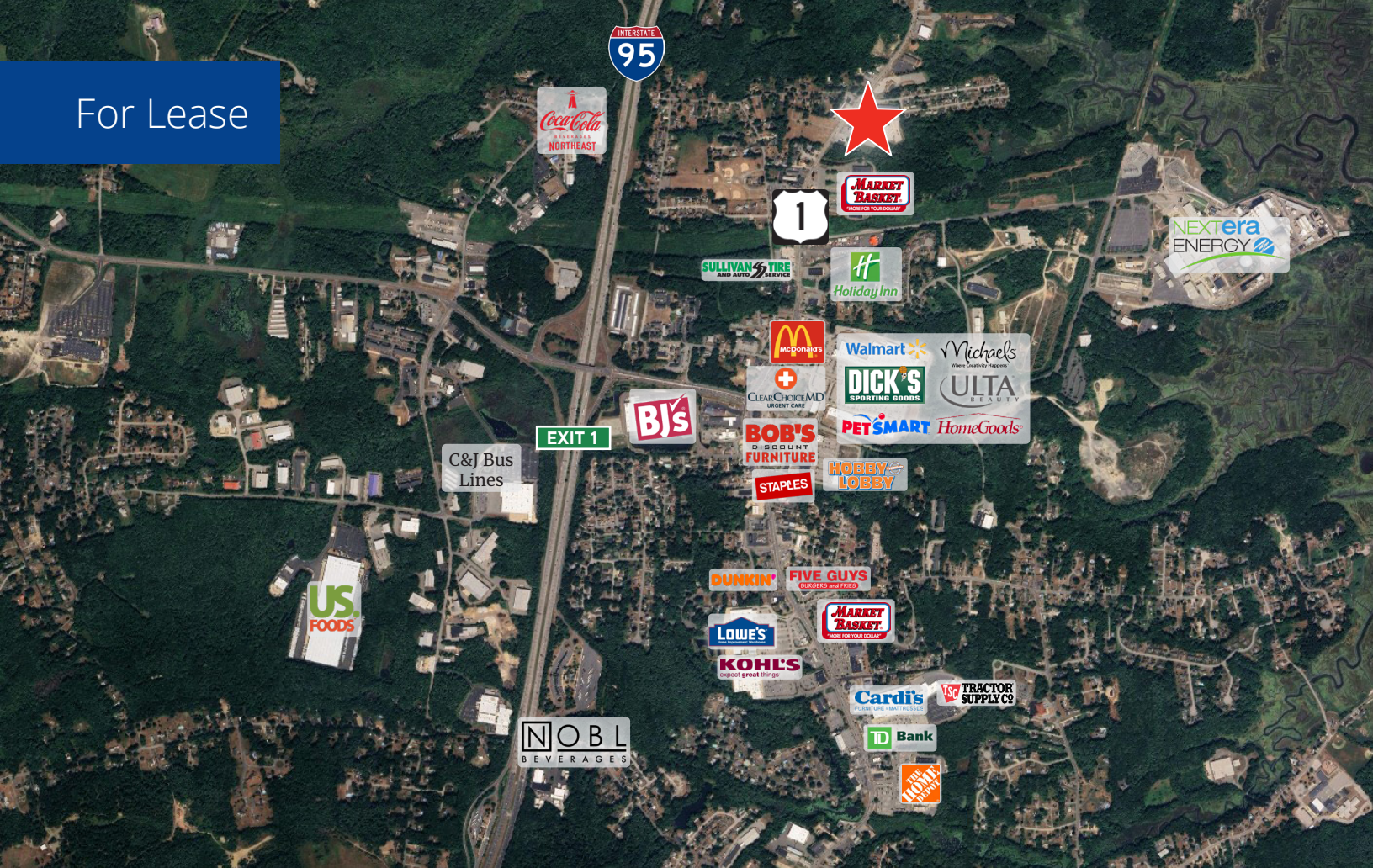
920 Lafayette Road Seabrook, NH

Property Highlights

- First floor office suites from 90± to 900± SF and up to 4,000± SF of second floor flex/office space available for lease
- Second floor 4,000± SF space is open, offering a flexible floorplan to accommodate tenant needs; can be subdivided into 2 spaces
- Perfect building for a variety of users, providing functional spaces in a welcoming environment
- Tenant mix includes self-storage, physical therapy, and martial arts
- Ample on-site parking and ADA accessible
- Location offers easy access to Route 101, I-95, and the MA border

Information herein has been obtained from sources deemed reliable, however its accuracy cannot be guaranteed by Colliers International | New Hampshire & Maine. The user is required to conduct their own due diligence and verification. Colliers International | New Hampshire & Maine is independently owned and operated.

For Lease

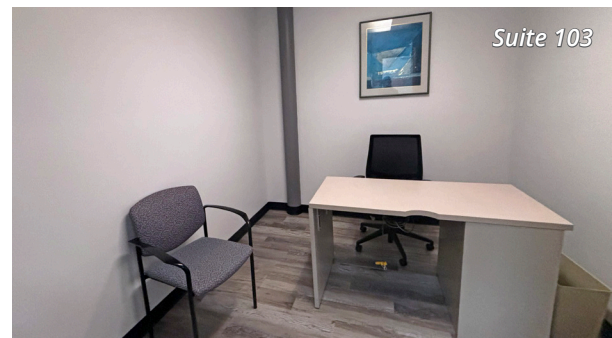


Specifications

Address:	920 Lafayette Road
Location:	Seabrook, NH 03842
Building Type:	Office
Year Built:	2003
Total Building SF:	55,222±
1st Floor Available SF:	Suite 103: 900± @ \$1,300/month Suite 105: 90± @ \$350/month Suite 106: 160± LEASED Suite 107: 96± @ \$350/month
2nd Floor Available SF:	Suite 200: 4,000± @ \$12.00-\$14.00 PSF gross
Floors:	2
Utilities:	Municipal water & sewer Natural gas
Zoning:	Smithtown & North Village Mixed-Use
Parking:	Ample on-site
Elevator:	Yes



Lobby Entrance



Suite 103

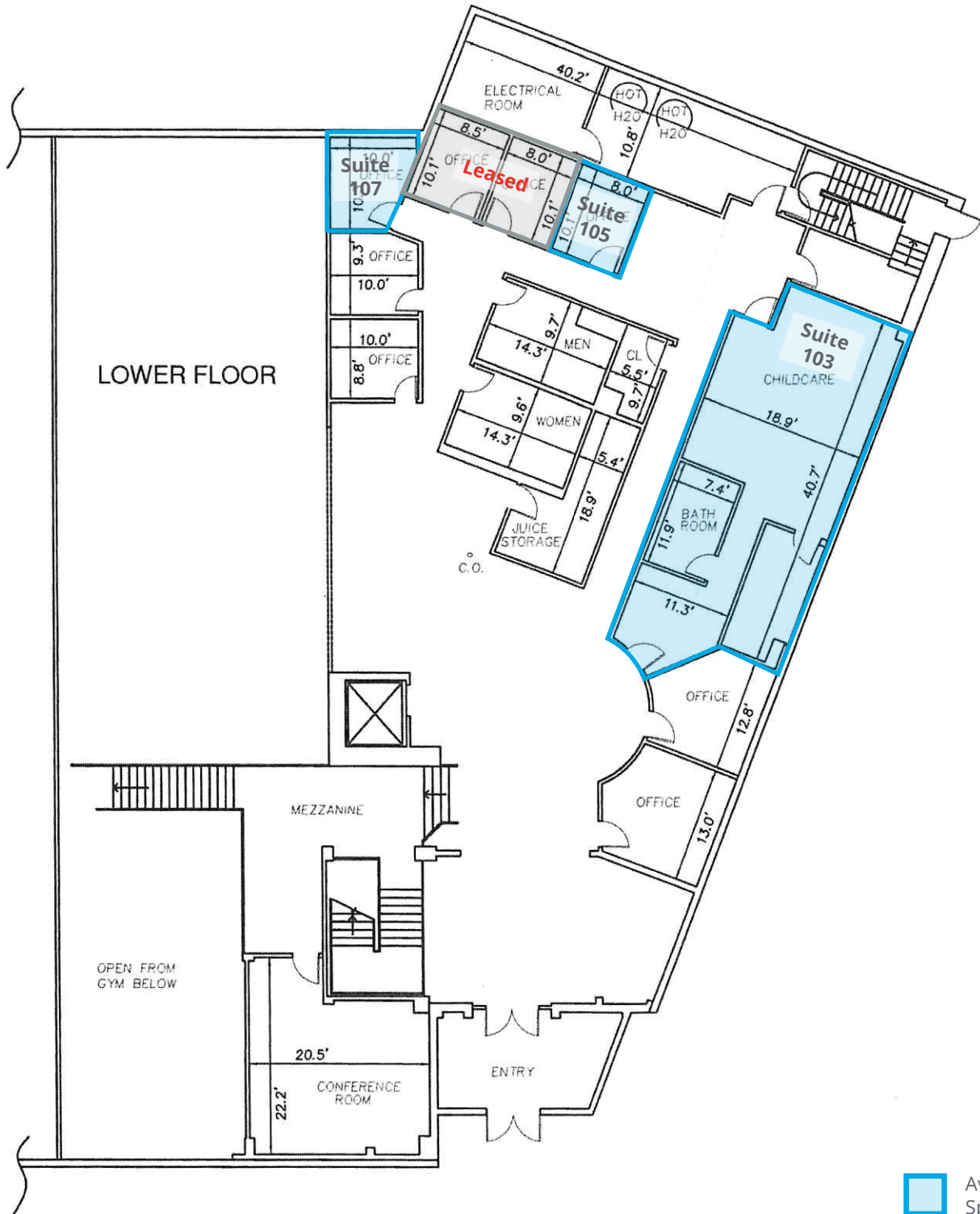


Suite 200

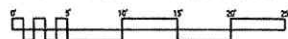


Colliers | 500 Market Street, Suite 9, Portsmouth, NH 03801
+1 603 433 7100 | colliersnh.com

1st Floor Plan

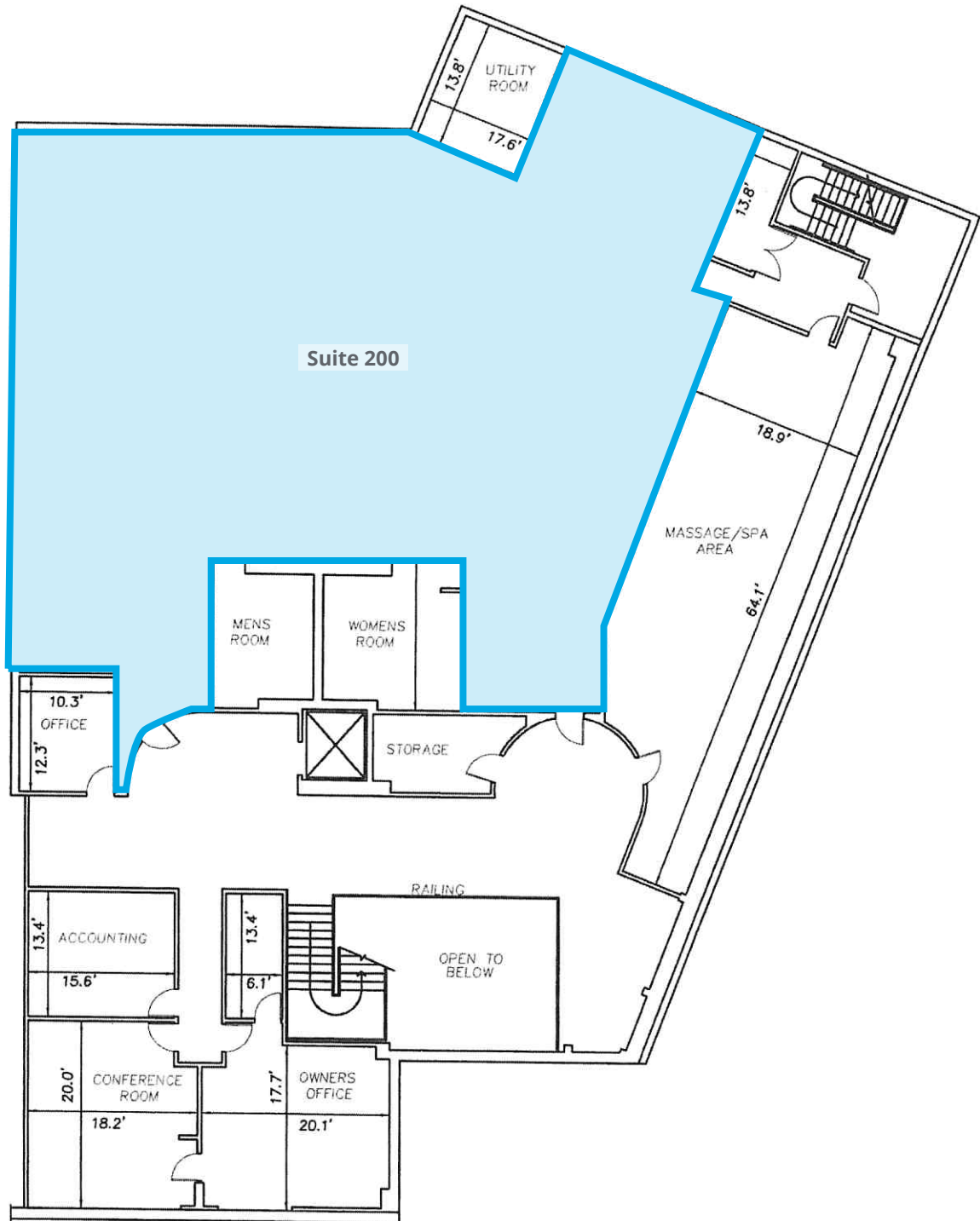


GROUND FLOOR



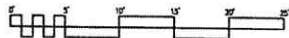
1/16"=1'-0" AT 8 1/2"x11" PAPER

2nd Floor Plan



 Available Space

2ND FLOOR PLAN



1/16"=1'-0" AT 8 1/2"x11" PAPER