

6600

New Venture Gear Dr.

East Syracuse, New York 13057



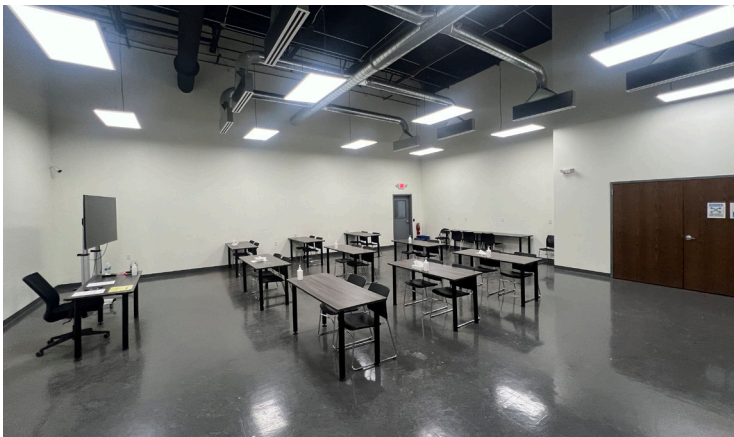
6600 New Venture Gear Drive
East Syracuse, NY 13057

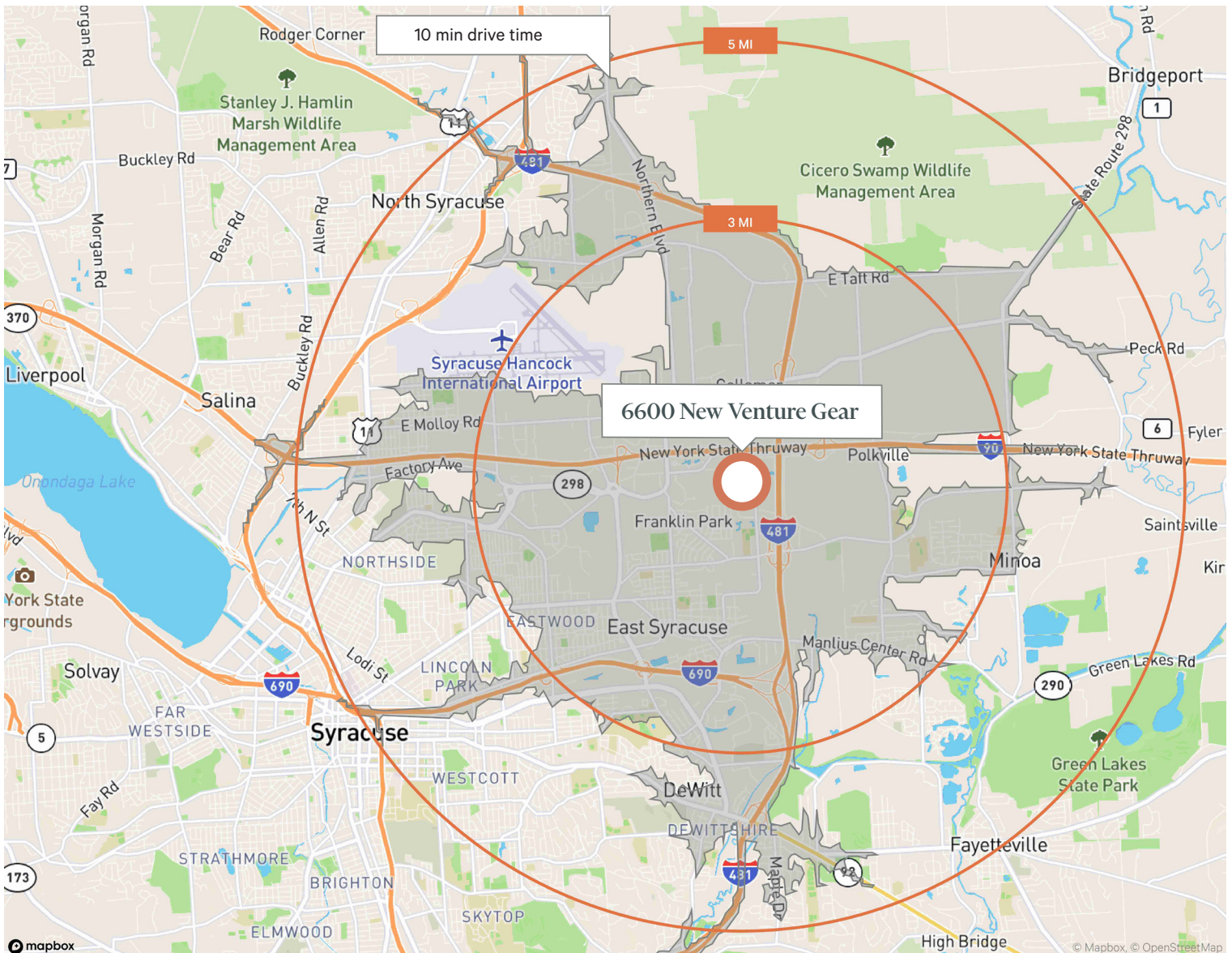
For Sublease

Available for sublease is 88,540 SF of warehouse/distribution space in the ONX1 building in East Syracuse. Included is a 10,000 SF office area with high ceilings, reception/waiting room, private offices, conference room, kitchenette/breakroom and large training room. The warehouse is equipped with 3-phase power and 17' clear ceiling height and higher ceiling in garage. Excellent location close to major interstates, hotels and food service.

Property Highlights

- + Approx. 78,540 SF warehouse; 10,000 SF office
- + 5 dock height doors, 2 overhead doors at grade, 14' x 10'
- + Lease Expiration: December 31, 2029
- + 17' clear ceiling height (higher in garage)
- + 3-phase power
- + Upscale office area with high ceilings, reception/waiting room, private offices, conference room, large training room, bullpen area, kitchenette/breakroom, bathrooms
- + Excellent location with easy access, less than a mile to 1-90/NYS Thruway and I-690. Nearby amenities include hotels and food service

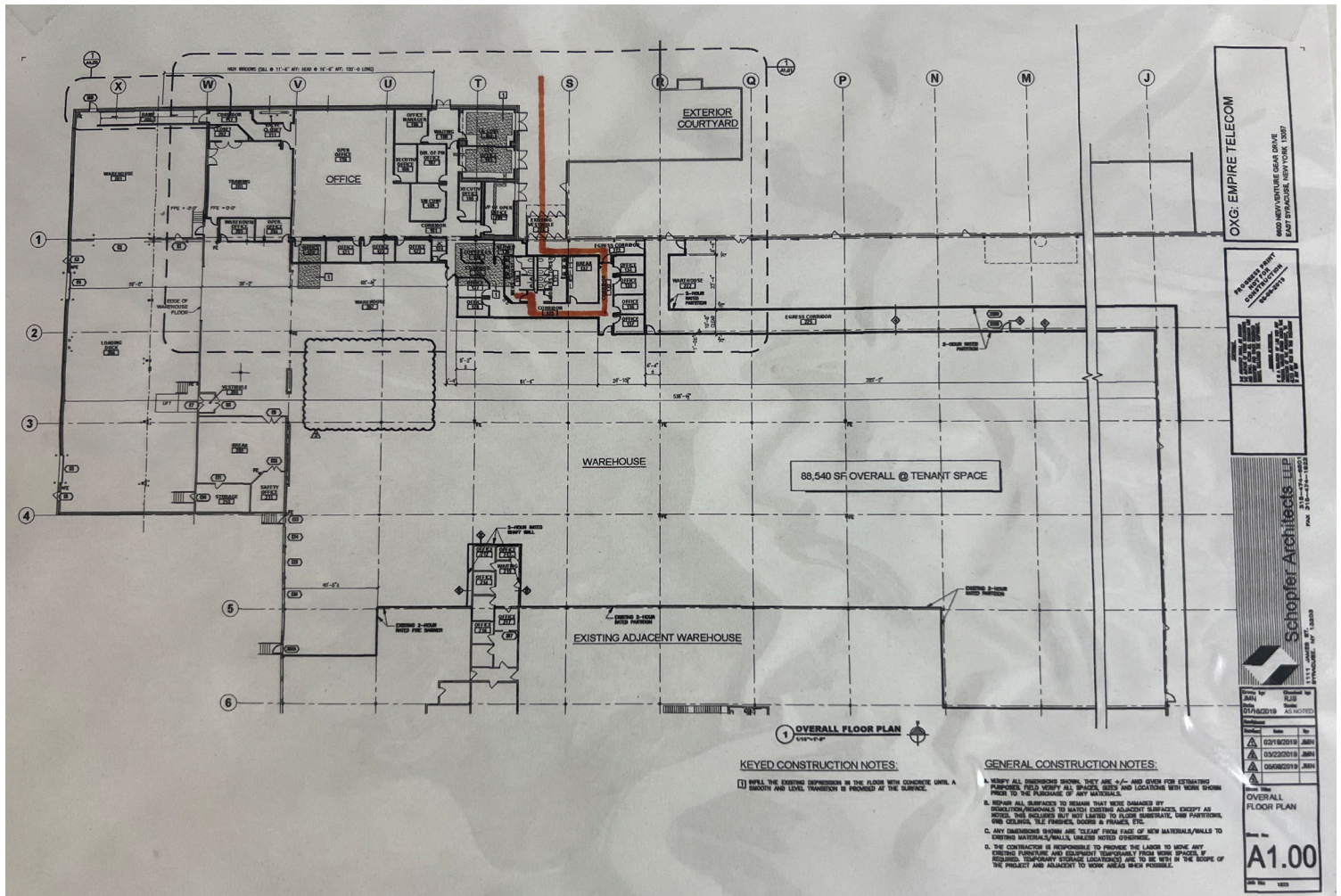




© 2025 CBRE Upstate NY, part of the CBRE Affiliate Network. All rights reserved. This information has been obtained from sources believed reliable, but has not been verified for accuracy or completeness. You should conduct a careful, independent investigation of the property and verify all information. Any reliance on this information is solely at your own risk. CBRE Upstate NY and the CBRE Upstate NY logo are service marks of CBRE Upstate NY. All other marks displayed on this document are the property of their respective owners, and the use of such logos does not imply any affiliation with or endorsement of CBRE Upstate NY. Photos herein are the property of their respective owners. Use of these images without the express written consent of the owner is prohibited.

6600 New Venture Gear Drive
East Syracuse, NY 13057

Floor Plan



Contact Us

Bill Anninos

Lic. Associate Real Estate Broker
+1 315 422 4200 x 315
bill.anninos@cbre-syr.com

Cory LaDuke, SIOR

Lic. Associate Real Estate Broker
+1 315 422 4200 x 321
cory.laduke@cbre-syr.com

CBRE Upstate NY

500 Plum Street, Suite 402
Syracuse, New York 13204
+1 315 422 4200

© 2025 CBRE Upstate NY, part of the CBRE Affiliate Network. All rights reserved. This information has been obtained from sources believed reliable, but has not been verified for accuracy or completeness. You should conduct a careful, independent investigation of the property and verify all information. Any reliance on this information is solely at your own risk. CBRE Upstate NY and the CBRE Upstate NY logo are service marks of CBRE Upstate NY. All other marks displayed on this document are the property of their respective owners, and the use of such logos does not imply any affiliation with or endorsement of CBRE Upstate NY. Photos herein are the property of their respective owners. Use of these images without the express written consent of the owner is prohibited.