

Medical Office | For Lease

CBRE

Grayson Medical Plaza

19,000 SF

2219 Loganville Highway
Grayson, GA 30017

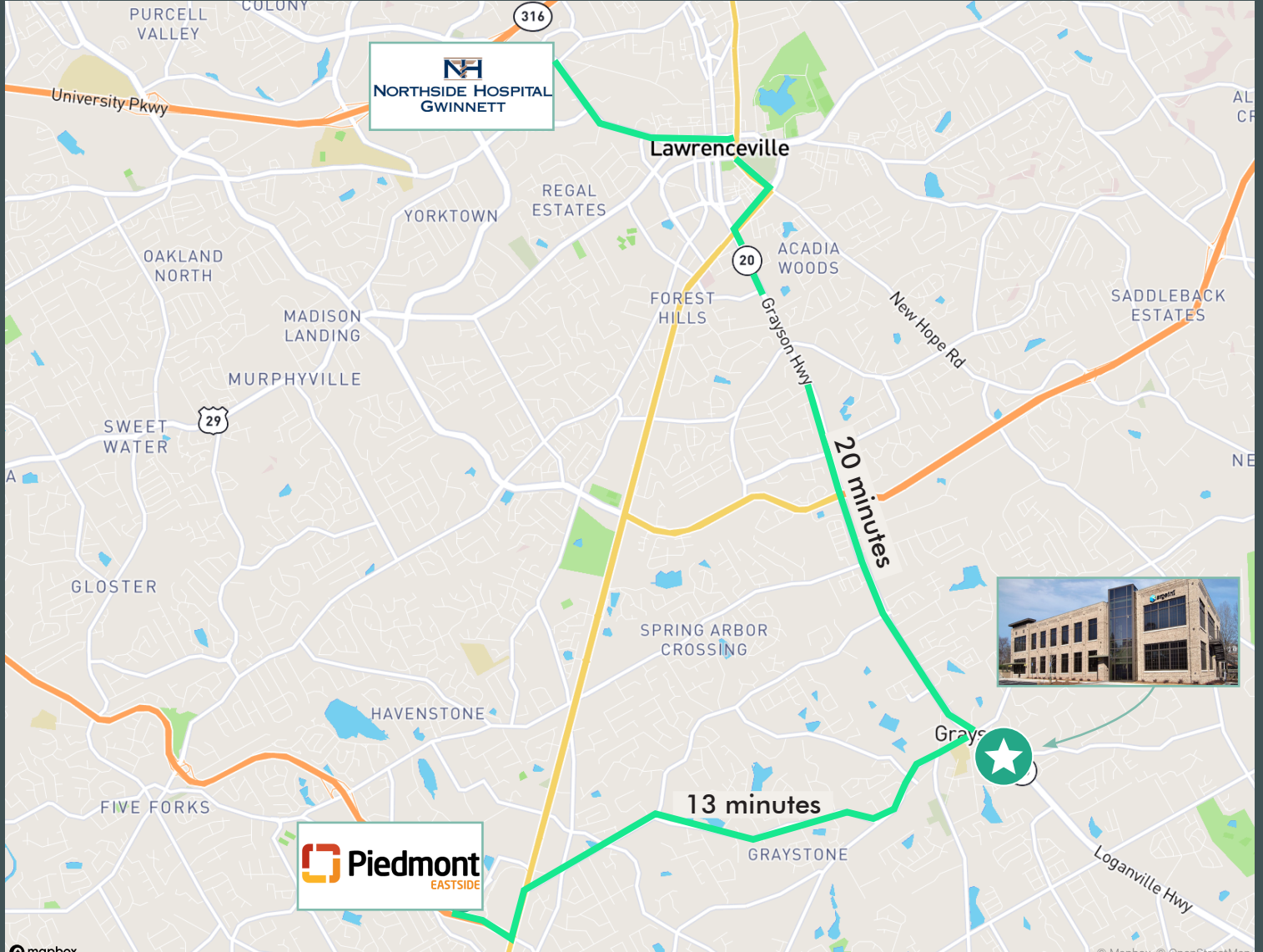
Delivering Q1 2025 - 15,000 SF remaining | 3 per 1,000 SF Parking Ratio



*Sample Of Building Design

Grayson Medical Plaza

2219 Loganville Highway | Grayson, GA 30017



Grayson Medical Plaza

About the Area

Easily accessible from Lawrenceville and Snellville, this 2 acre site will site at the prime intersection of Grayson New Hope Road and Loganville Highway, and will include a variety of amenities around the immediate area.

Grayson Medical Plaza will offer the areas newest medical office facilities for the ever expanding providers in the area, and continue to serve the growing population.

153k

5-mile Population

528k

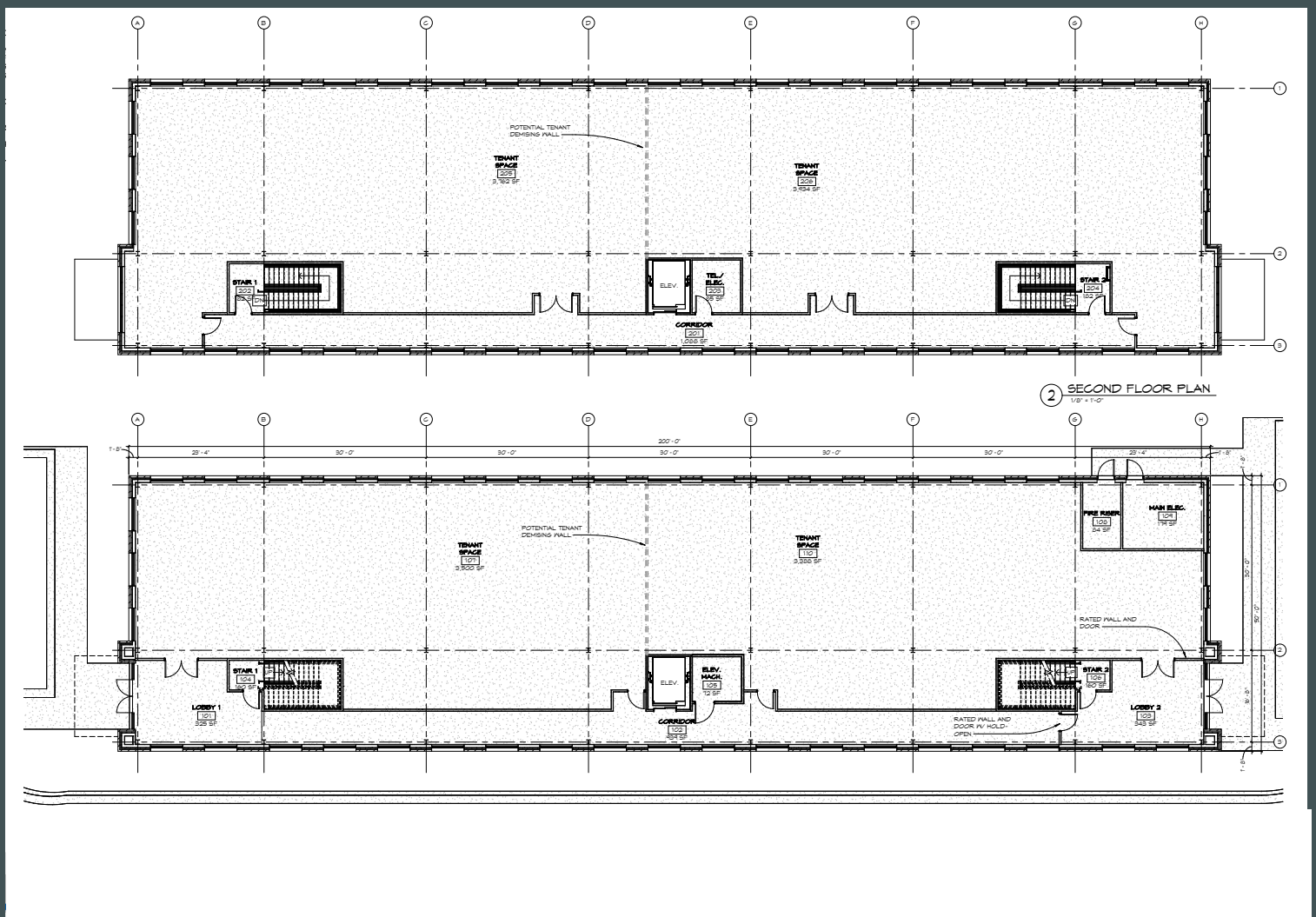
10-mile Population

37 years

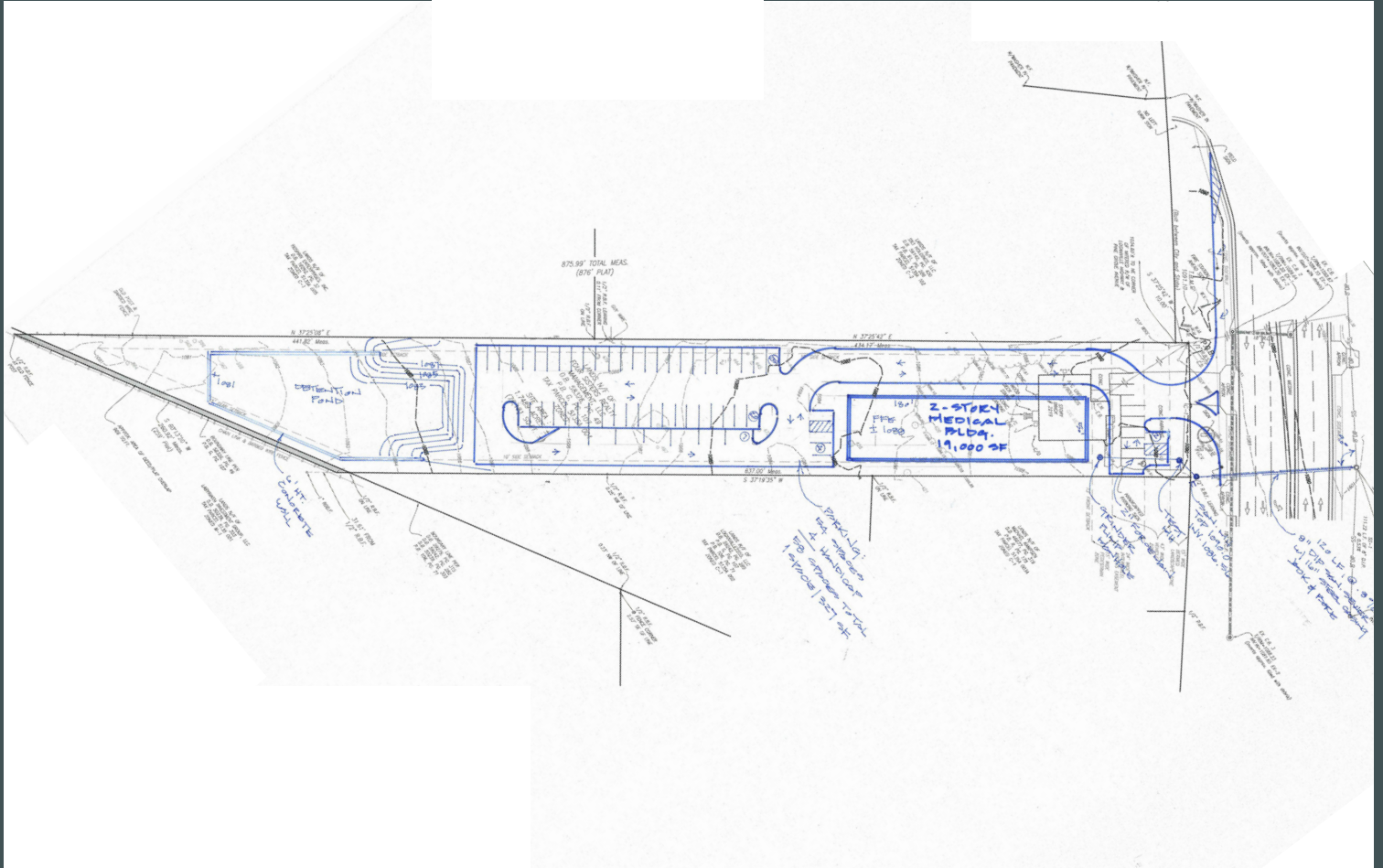
Average Age

\$124k

Average Household Income



Site Plan



Contact Us

Dillon Mabrey
+1 404 812 5197
dillon.mabrey@cbre.com

Pablo Melgarejo
+1 404 812 5011
pablo.melgarejo@cbre.com

CBRE, Inc.
3550 Lenox Road, Suite 2300
Atlanta, GA 30326
+1 404 504 7900

© 2023 CBRE, Inc. All rights reserved. This information has been obtained from sources believed reliable, but has not been verified for accuracy or completeness. You should conduct a careful, independent investigation of the property and verify all information. Any reliance on this information is solely at your own risk. CBRE and the CBRE logo are service marks of CBRE, Inc. All other marks displayed on this document are the property of their respective owners, and the use of such logos does not imply any affiliation with or endorsement of CBRE. Photos herein are the property of their respective owners. Use of these images without the express written consent of the owner is prohibited.