

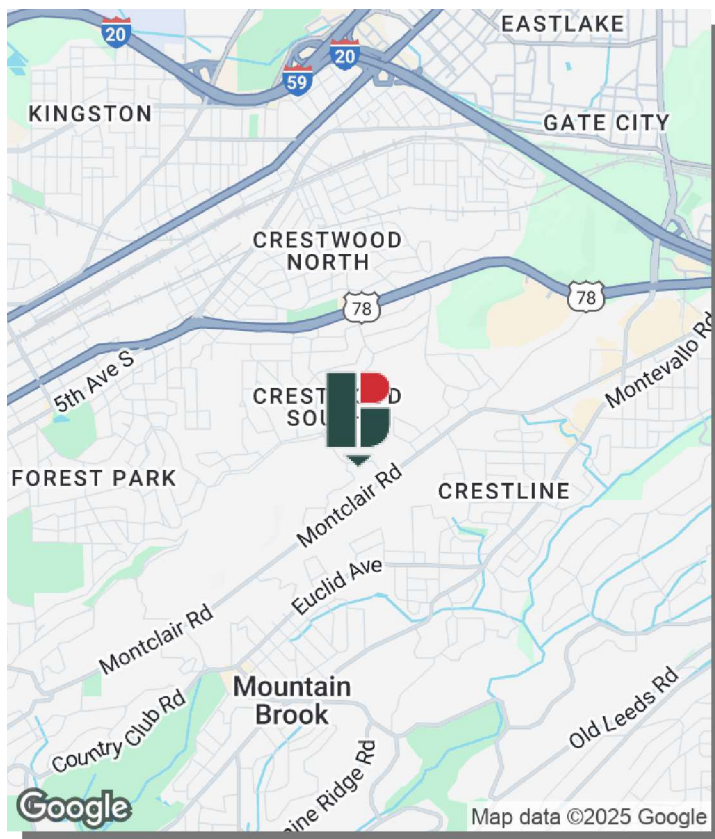


## 880 MONTCLAIR ROAD

BIRMINGHAM, AL 35213

### PROPERTY FEATURES

- Prime sublease opportunity on Montclair Road
- Move-in ready **4,635 SF** suite  
(Three large offices, nice break room, conference rooms, and open area)
- Class A professional office building
- Free covered parking in the attached deck
- Convenient to restaurants and shopping in Mountain Brook Village, Crestline Village, English Village, and Avondale



LEASE RATE:  
\$22.00 SF/yr (Full Service)

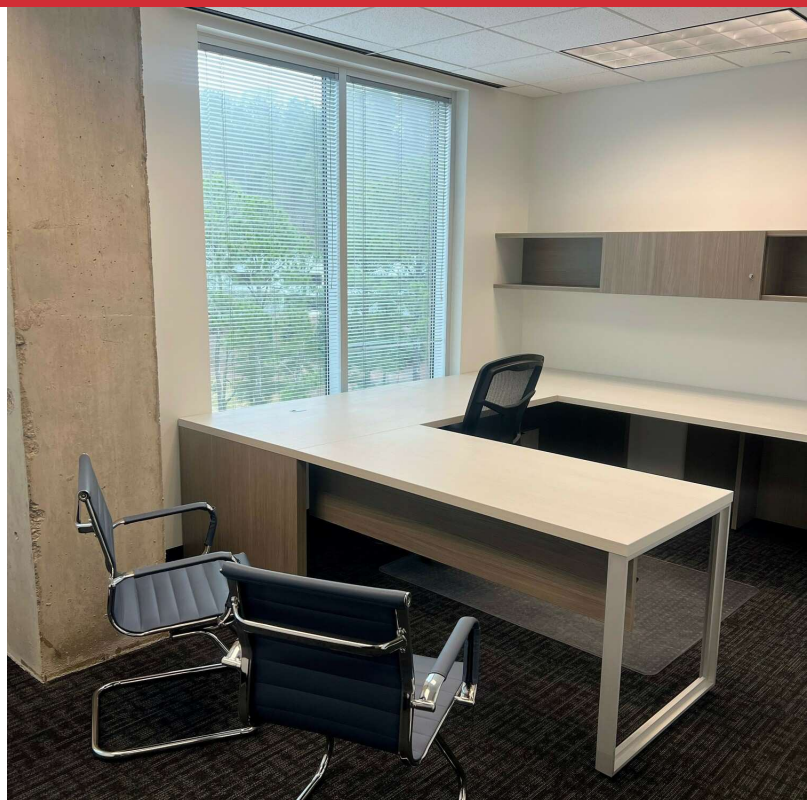
**Philip Currie, SIOR, CCIM**

205.313.4369  
pcurrie@jhberry.com

**Jake Taylor**

205.313.4377  
jtaylor@jhberry.com



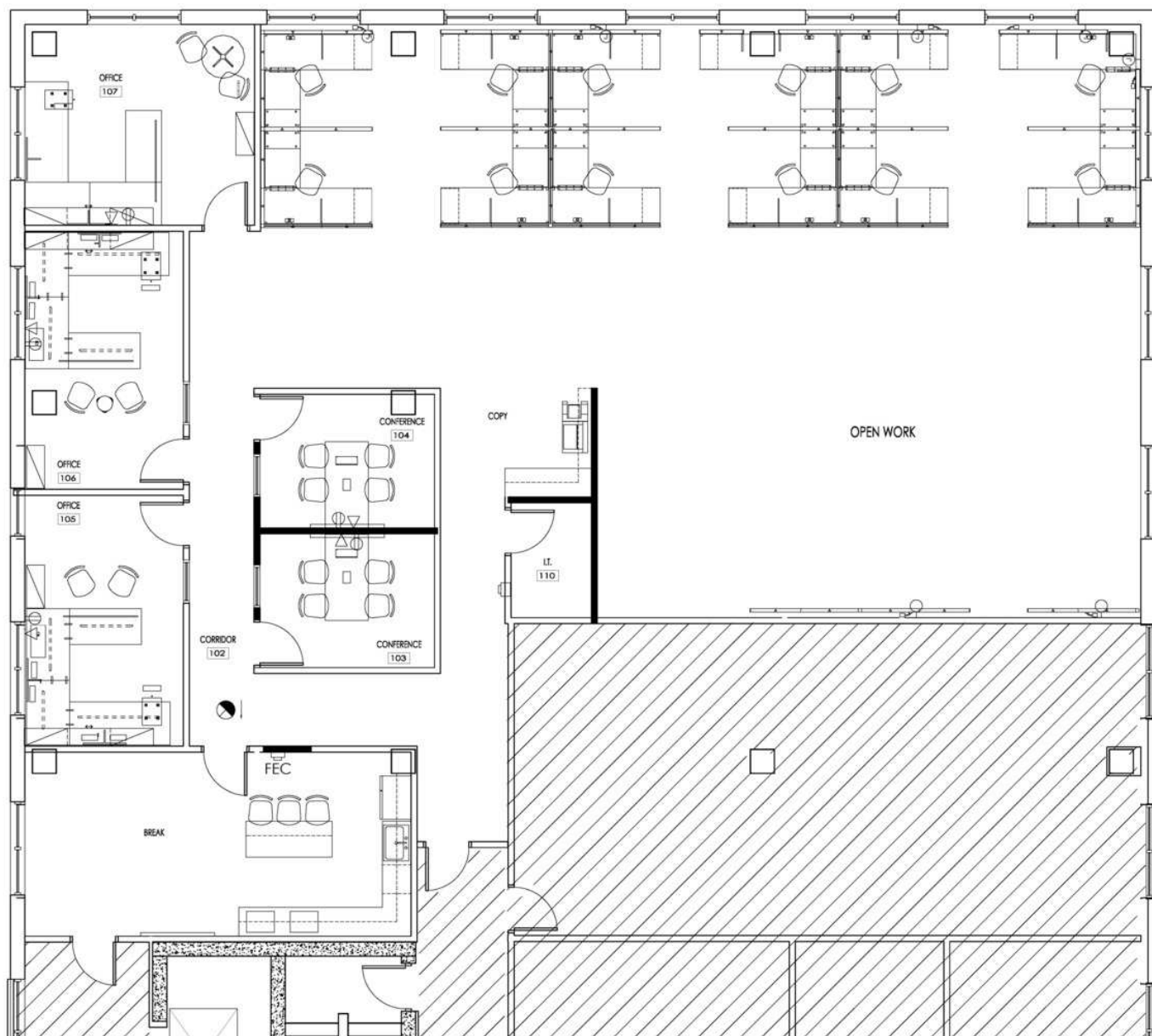


**Philip Currie, SIOR, CCIM**

205.313.4369  
pcurrie@jhberry.com

**Jake Taylor**

205.313.4377  
jtaylor@jhberry.com



↑ LIFE SAFETY PLAN  
SCALE: 1/8" = 1'-0"

**Philip Currie, SIOR, CCIM**

205.313.4369

pcurrie@jhberry.com

**Jake Taylor**

205.313.4377

jtaylor@jhberry.com