



1261-1263 HOWARD STREET
SAN FRANCISCO, CA

FOR LEASE

± 5,000 - 15,000 SQFT

CREATIVE COMMERCIAL
BUILDING CENTRALLY
LOCATED IN SOMA

JAY CAHAN
Lic.01005130
+1 415 867 4040
jcahan@hcmcommercial.com

BEN DURHAM
Lic.01211050
+1 415 601 4994
bdurham@hcmcommercial.com

H | C | M
Commercial Properties

1234 Mariposa Street, San Francisco, California 94107
www.hcmcommercial.com

ADDRESS

1261-1263 Howard Street
San Francisco, CA 94103

SIZE (Divisible by Floor)

Ground Floor: 5,000 ± sqft

Second Floor: 5,000 ± sqft

Third Floor: 5,000 ± sqft

TOTAL: 15,000 ± sqft

FEATURES

- Reinforced Brick & Timber Building
- Kitchens
- HVAC
- Mostly Open Floor Plan
- Great Natural Light
- Roll Up Door Access to Tehama St.
- Street to Street access Tehama/Howard St.
- Freight Elevator

AVAILABLE

Now

LEASE RATE

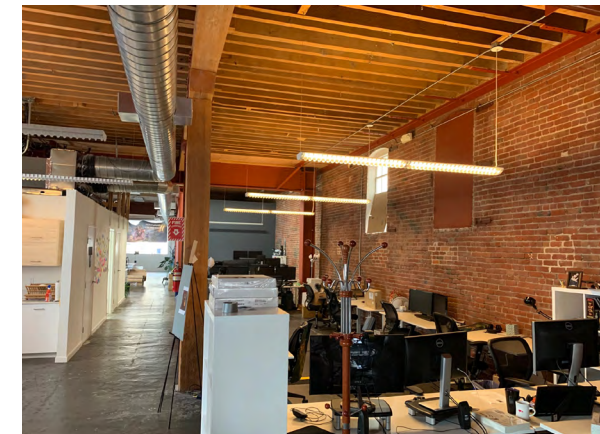
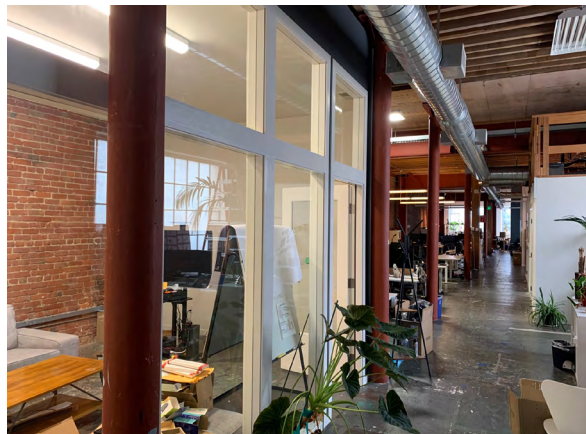
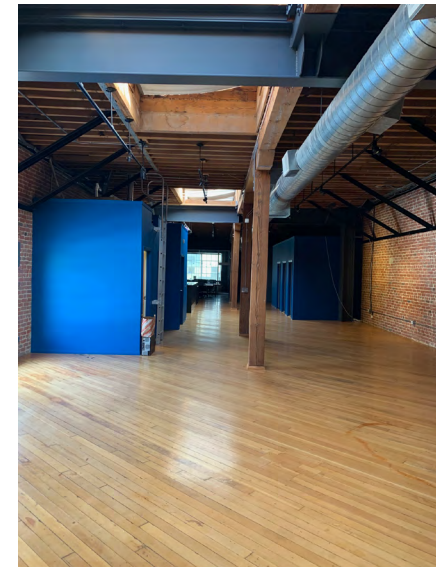
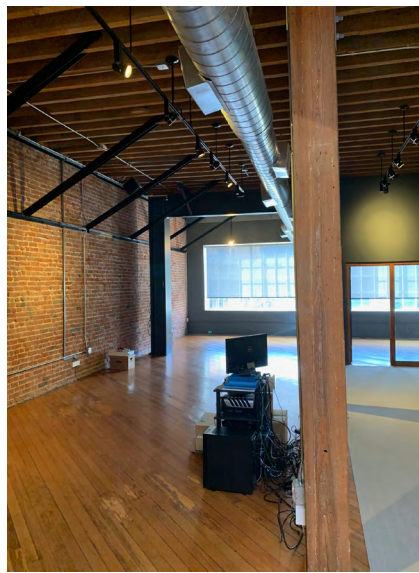
\$4.00 psf/month, IG

BEN DURHAM
Lic.01211050

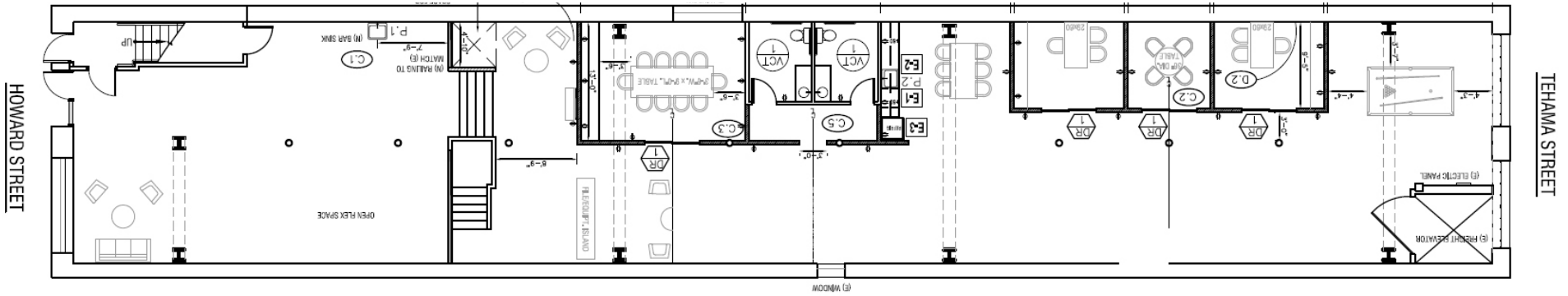
415.601.4994
bdurham@hcmcommercial.com

JAY CAHAN
Lic.01005130

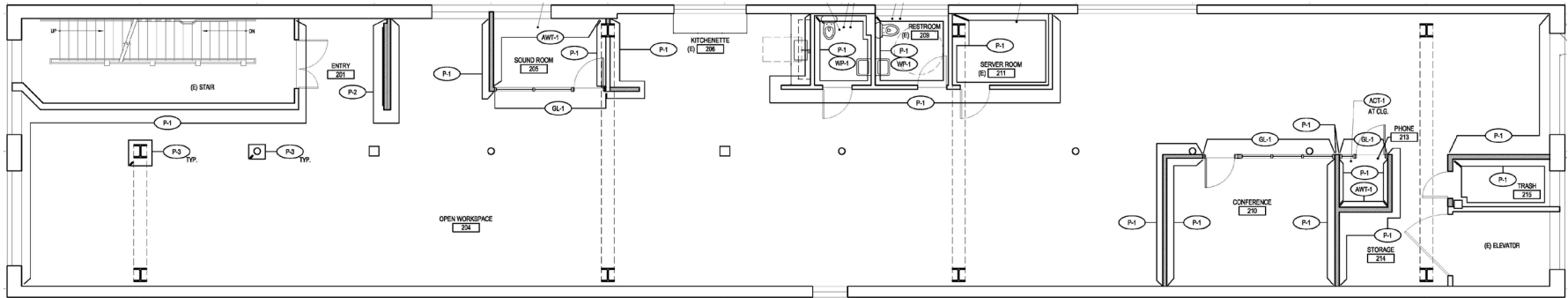
415.867.4040
jcahan@hcmcommercial.com



GROUND FLOOR PLAN



SECOND FLOOR PLAN



THIRD FLOOR PLAN

