

1666 BROADWAY

BETWEEN 51st Street & 52nd Street | TIMES SQUARE



NATIVE ROOTS
CAFÉ

1640



COFFEE
PASTRIES
&
GOOD VIBES

RETAIL FOR LEASE

K BEAUTY MANHATTAN



1666 BROADWAY

BETWEEN 51st Street & 52nd Street | TIMES SQUARE

PROPERTY HIGHLIGHTS

- Situated at the base of *Manhattan Times Square Hotel*
- All uses considered
- Existing Bathroom in Place
- Neighbors include:
Din Tai Fung, McDonald's, Duane Reade, Angelina Bakery, K Beauty Manhattan (coming soon).

SIZE: 760 SF Ground Floor

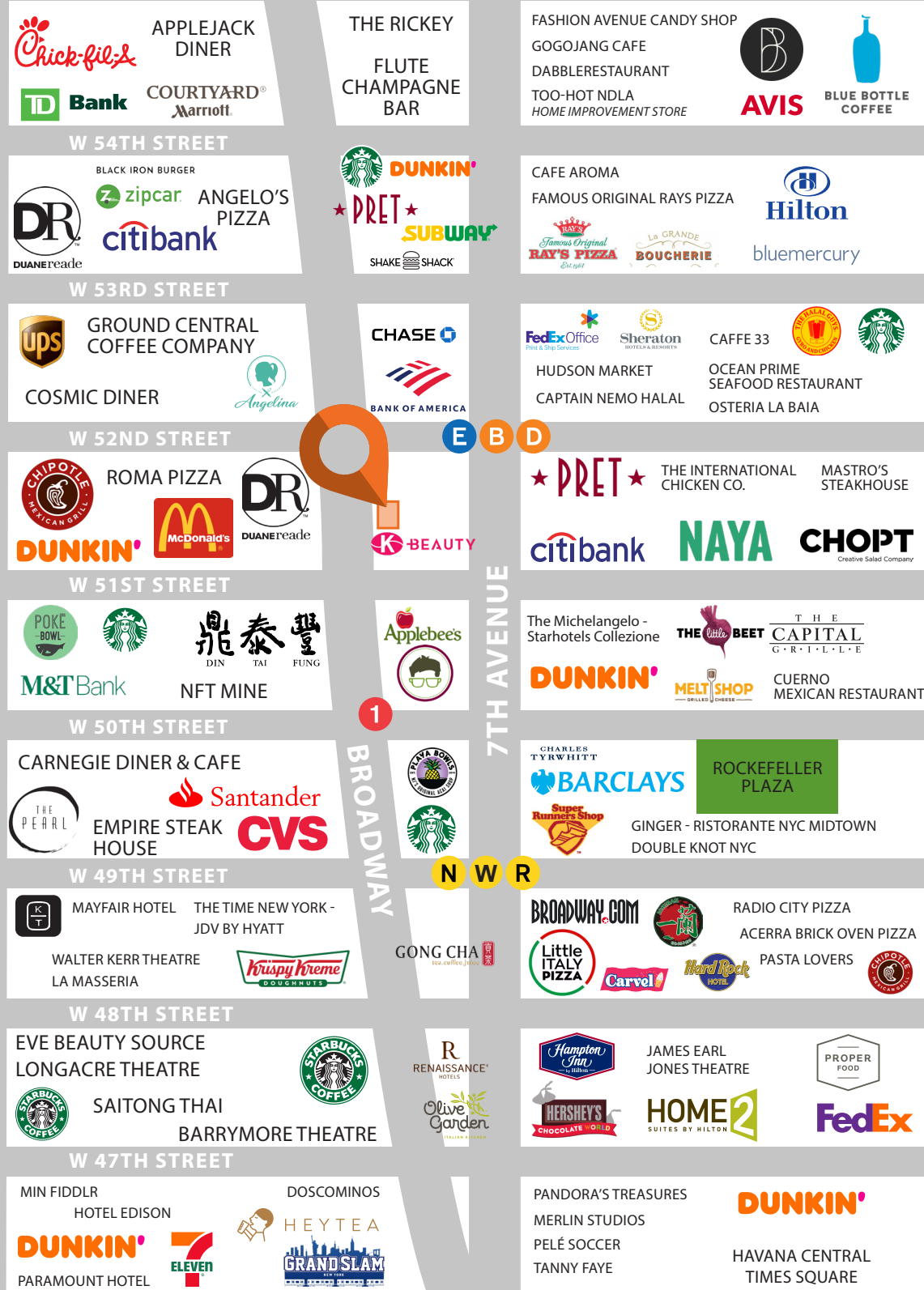
FRONTAGE: 15'

CEILING HEIGHT: 10'

POSSESSION: Arranged

ASKING RENT: Upon Request

TRANSPORTATION: 1 B D E



1666 BROADWAY

BETWEEN 51st Street & 52nd Street | TIMES SQUARE

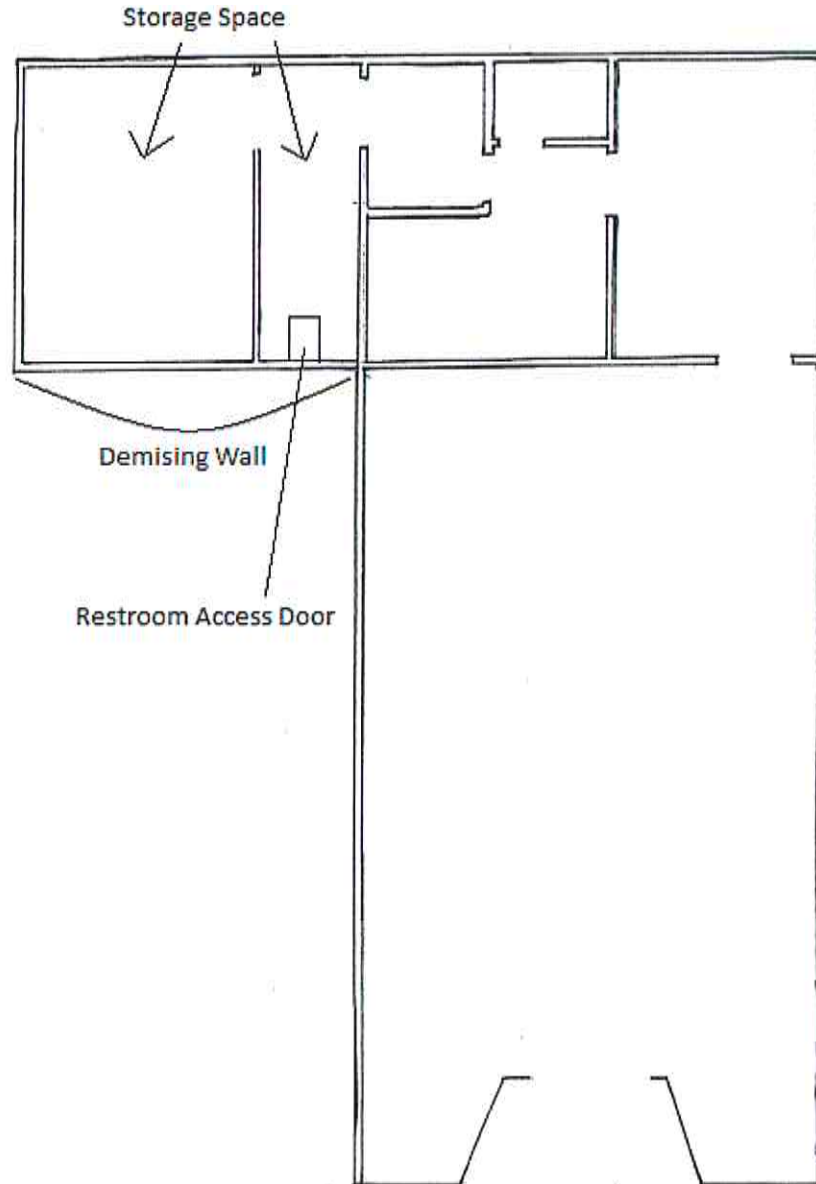


All information supplied in this marketing presentation and/or flyer is from sources deemed reliable and is furnished subject to errors, omissions, modifications, removal of listings from sale/lease and to any listing condition. Any square footage, dimensions, floor plans and/or technical data set forth are approximations and are subject to further elaboration/confirmation.

1666 BROADWAY

BETWEEN 51st Street & 52nd Street | TIMES SQUARE

FLOOR PLANS:
GROUND FLOOR - 760 SF



1666 BROADWAY

BETWEEN 51st Street & 52nd Street | TIMES SQUARE

FOR MORE INFORMATION,
PLEASE CONTACT:

ALBERT MANOPLA

212.380.8369 | AManopla@ksrny.com

SOPHIA GAINES

917.902.6352 | SGaines@ksrny.com

