



STREET VIEW - MAIN STREET & 8TH AVENUE

The above illustrations are representative of the architectural style. They are not meant to illustrate the final design or materials but are intended to depict the size, mass, and general materials of the proposed building.

©2024 BartonPartners Architects Planners, Inc. All rights reserved.

A1

Belmar Mixed-Use
Belmar, NJ

Project Number: 20029P
Client: Sackman Enterprises
Date: 2024.07.19

BARTON PARTNERS
urban design + architecture

700 East Main Street, Suite 301, Norristown, Pa 19401
www.bartonpartners.com | t:610.930.2800 | e:design@bartonpartners.com



STREET VIEW - MAIN STREET & 8TH AVENUE

The above illustrations are representative of the architectural style. They are not meant to illustrate the final design or materials but are intended to depict the size, mass, and general materials of the proposed building.

©2024 BartonPartners Architects Planners, Inc. All rights reserved.

A2

Belmar Mixed-Use
Belmar, NJ

Project Number: 20029P
Client: Sackman Enterprises
Date: 2024.07.19

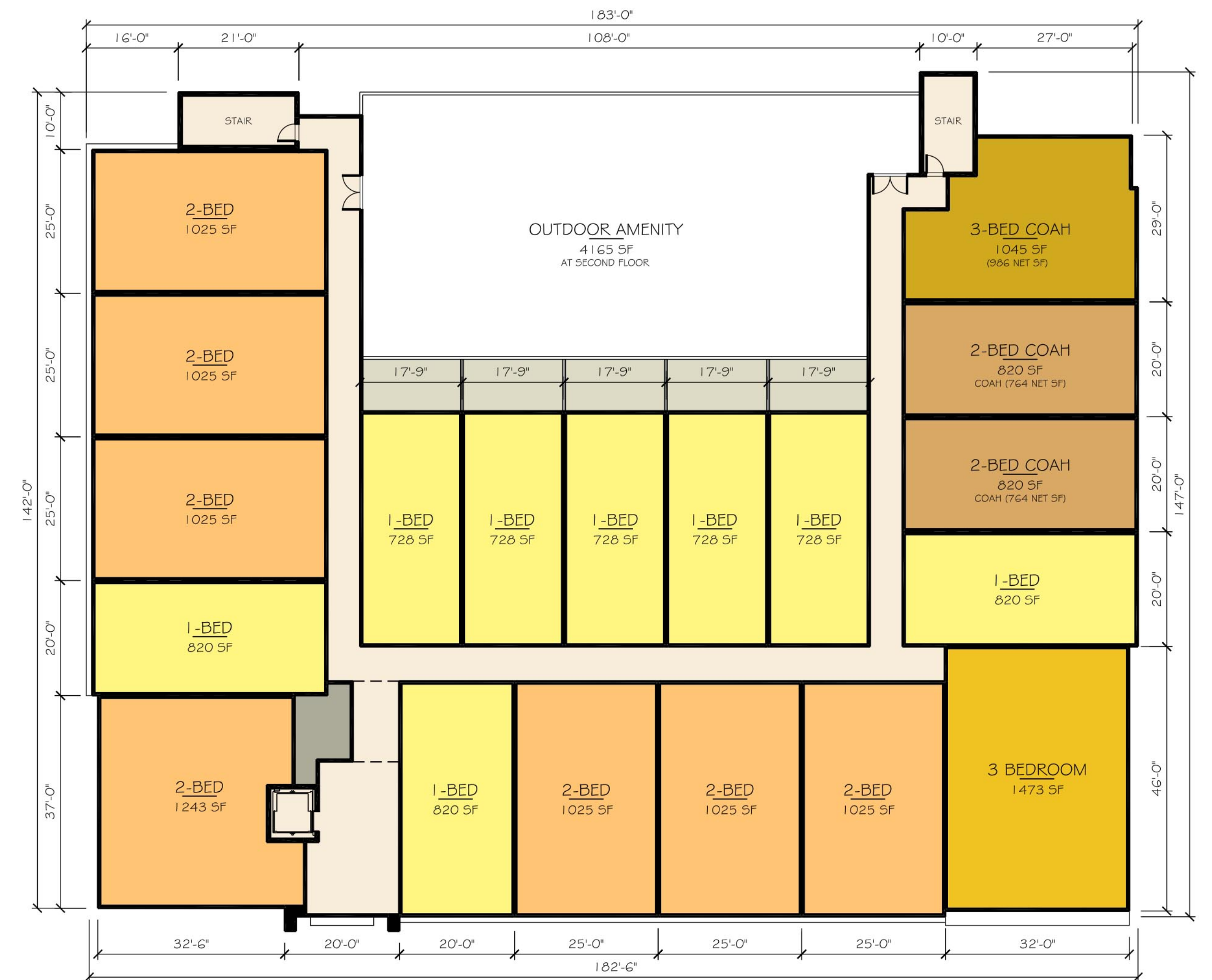
BARTON PARTNERS
urban design + architecture

700 East Main Street, Suite 301, Norristown, Pa 19401
www.bartonpartners.com | t:610.930.2800 | e:design@bartonpartners.com



GROUND FLOOR PLAN

TOTAL ON-SITE PARKING: 76 SPACES



SECOND/THIRD FLOOR PLAN

One Bedroom Units	20	(36%)
Two Bedroom Units	31	(55%)
Three Bedroom Units	5	(9%)
Total Units	56	

<u>Affordable Units</u>	
One Bedroom Units	1
Two Bedroom Units	7
Three Bedroom Units	2
Total Units	10 (18% of total units)

Amenity	1,614 SF
Outdoor Amenity	4,165 SF
 Retail	 3,752 SF

<u>Parking</u>	
Parking	76 garage spaces

The above illustrations are representative of the architectural style. They are not meant to illustrate the final design or materials but are intended to depict the size, mass, and general materials of the proposed building.

©2024 BartonPartners Architects Planners, Inc. All rights reserved.

BUILDING PLANS

A3

**Belmar Mixed-Use
Belmar, NJ**

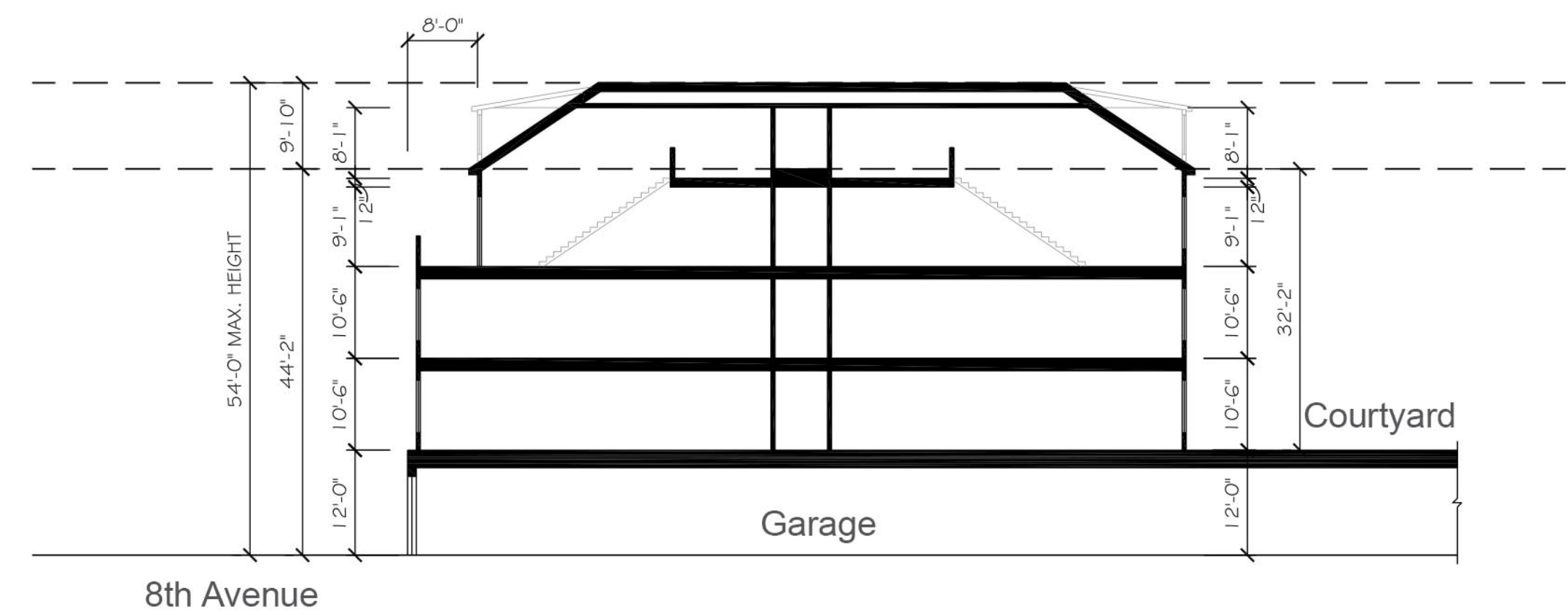
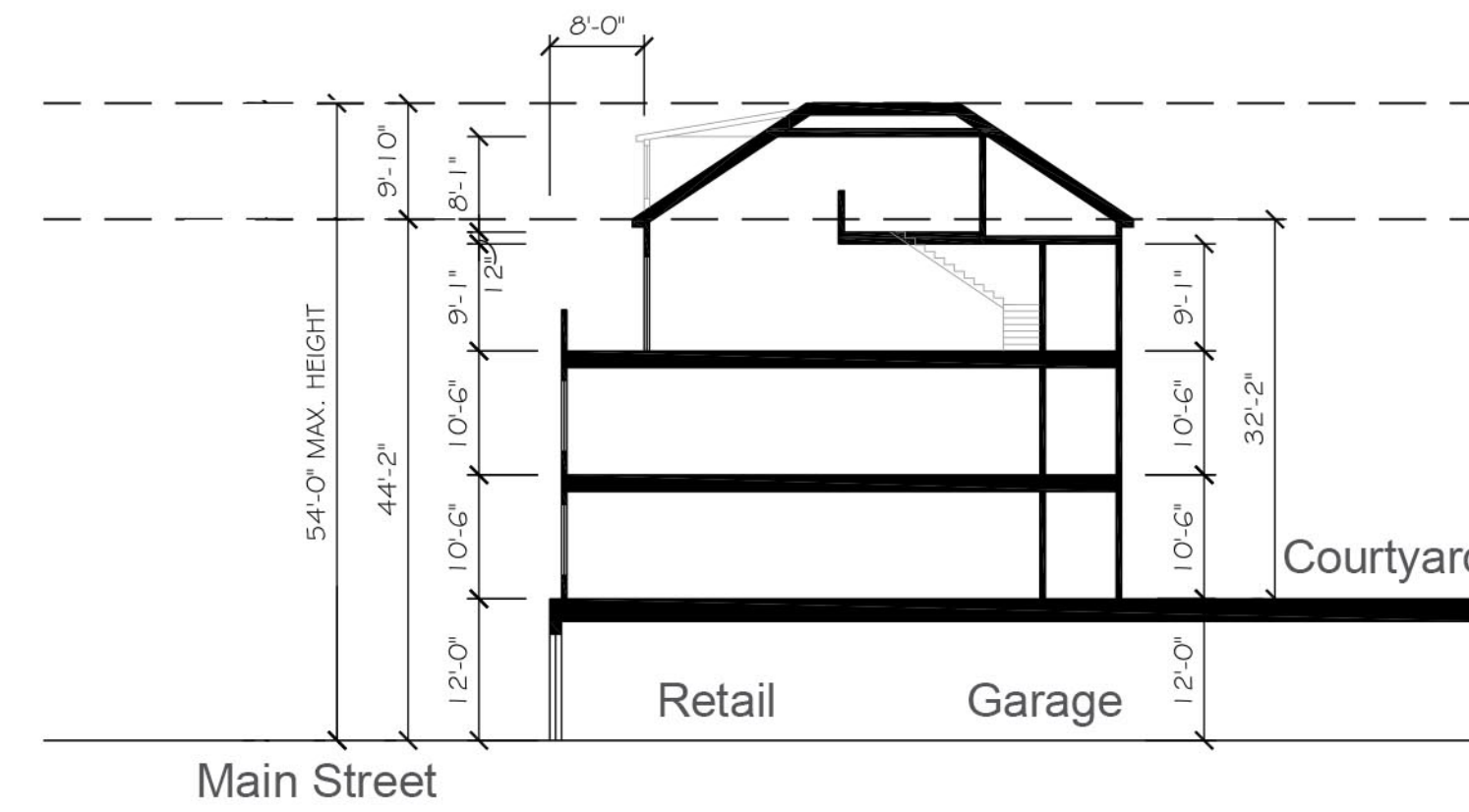
Project Number: 20029P
Client: Sackman Enterprises
Date: 2024.07.19

BARTONPARTNERS
urban design + architecture

700 East Main Street, Suite 301, Norristown, Pa 19401
www.bartonpartners.com | t:610.930.2800 | e:design@bartonpartners.com



FOURTH FLOOR PLAN



SECTIONS

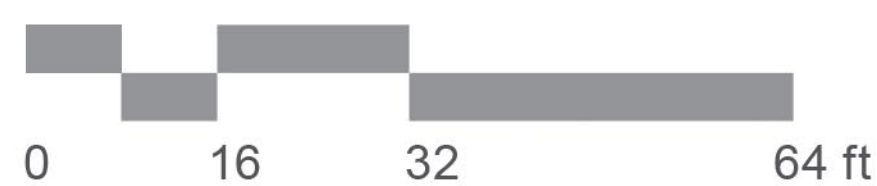
One Bedroom Units	20	(36%)
Two Bedroom Units	31	(55%)
Three Bedroom Units	5	(9%)
Total Units	56	

Affordable Units	
One Bedroom Units	1
Two Bedroom Units	7
Three Bedroom Units	2
Total Units	10 (18% of total units)

Amenity	1,614 SF
Outdoor Amenity	4,165 SF

Parking	
Parking	76 garage spaces

Retail	3,752 SF
--------	----------



BUILDING PLANS

The above illustrations are representative of the architectural style. They are not meant to illustrate the final design or materials but are intended to depict the size, mass, and general materials of the proposed building.

©2024 BartonPartners Architects Planners, Inc. All rights reserved.



WEST ELEVATION - Main Street



NORTH ELEVATION - 8th Street



EAST ELEVATION



SOUTH ELEVATION

ELEVATIONS

The above illustrations are representative of the architectural style. They are not meant to illustrate the final design or materials but are intended to depict the size, mass, and general materials of the proposed building.

©2024 BartonPartners Architects Planners, Inc. All rights reserved.

A5

Belmar Mixed-Use
Belmar, NJ

Project Number: 20029P
Client: Sackman Enterprises
Date: 2024.07.19

BARTON PARTNERS
urban design + architecture

700 East Main Street, Suite 301, Norristown, Pa 19401
www.bartonpartners.com | t:610.930.2800 | e:design@bartonpartners.com