

4305

HACIENDA DRIVE
PLEASANTON, CA



SUITE 300 | ±4,121 SF AVAILABLE FOR SUBLEASE | LEASE EXPIRATION DATE JANUARY 31, 2025

NEWMARK

Rich Hoyt | Senior Managing Director

619.548.7866 | Rich.Hoyt@nmrk.com | CA RE Lic.#01470213

Jeff Morgenstern | Senior Managing Director

510.409.8588 | Jeff.Morgenstern@nmrk.com | CA RE Lic.#01275910

4305

HACIENDA DRIVE
PLEASANTON, CA

SPACE HIGHLIGHTS

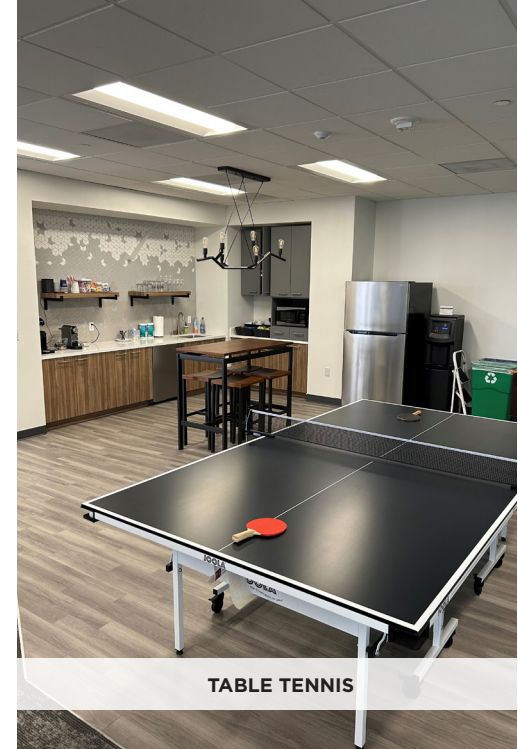
- **4,121 Sf - Available Immediately**
- **Open Plan With Balcony Access**
- **Double Door Access Off Elevator Lobby**
- **Plug & Play Opportunity**
- **Lease Expiration Date January 31, 2025**

BUILDING AMENITIES

- **Class A Building With Recently Upgraded Amenities**
- **On Site Cafe W/ Beer & Wine And Outside Seating**
- **Project Common Conference Room**
- **Project Gym, With Showers And Lockers**
- **Underground Parking**
- **Walking Distance To Bart**

4305

HACIENDA DRIVE
PLEASANTON, CA



4305

HACIENDA DRIVE
PLEASANTON, CA



CONFERENCE ROOM



GYM



CAFE



OUTDOOR CAFE PATIO AREA

4305

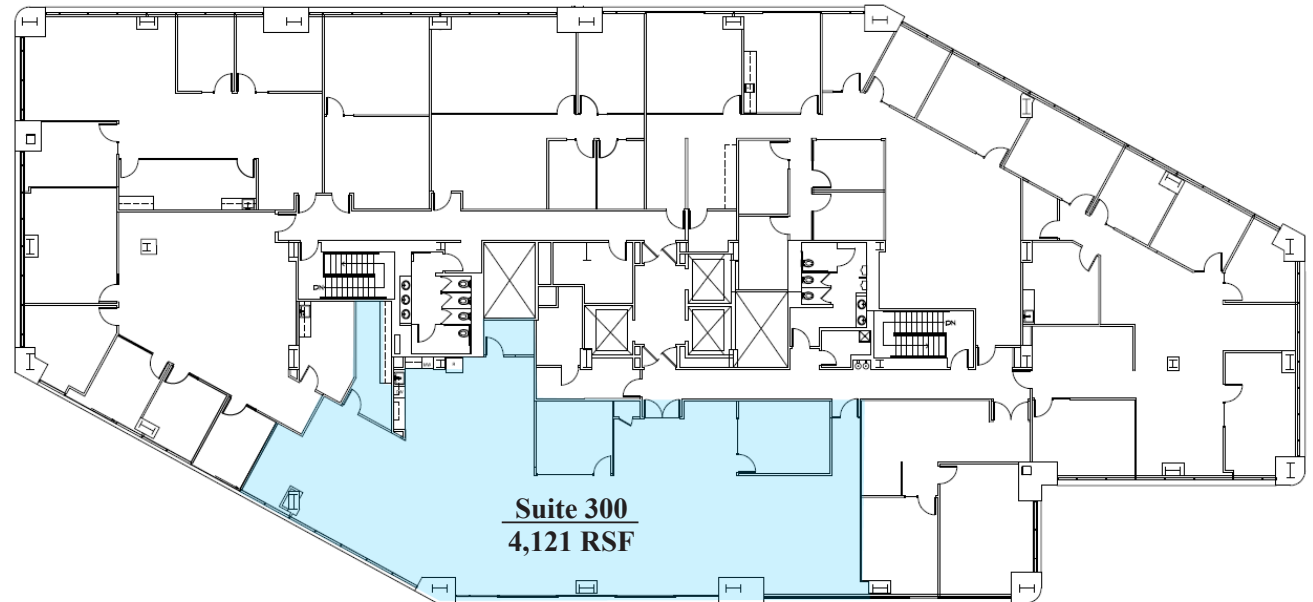
HACIENDA DRIVE
PLEASANTON, CA



FLOOR PLANS

SUITE 300

±4,121 RSF AVAILABLE



4305

HACIENDA DRIVE
PLEASANTON, CA

TRANSPORTATION MAP

