

PERFECT FOR WAREHOUSE AND  
MANUFACTURING USES

13106-13110  
S AVALON BLVD  
LOS ANGELES, CA 90061

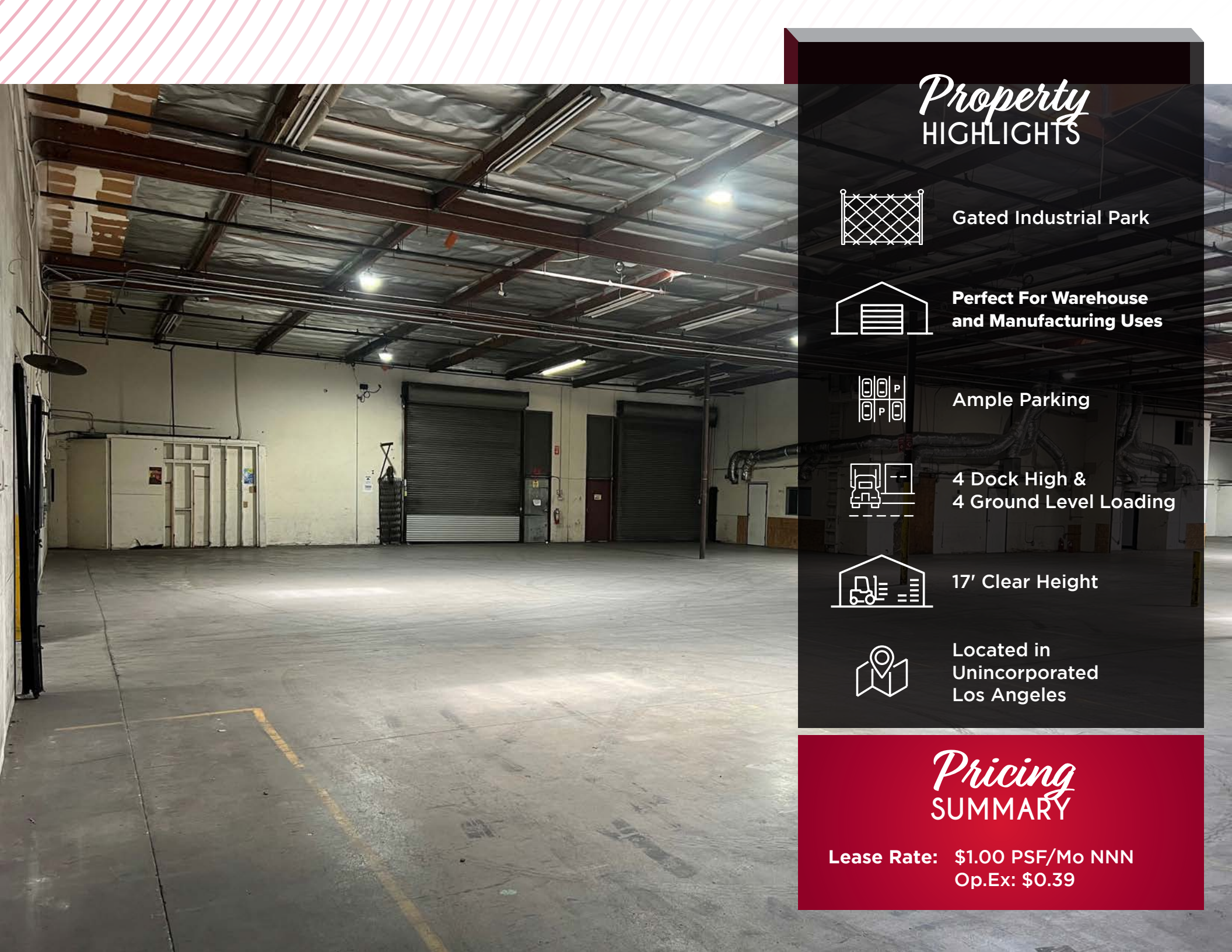


*For Lease*

±40,312 SQ. FT. INDUSTRIAL BUILDING

**LEE &  
ASSOCIATES**  
COMMERCIAL REAL ESTATE SERVICES

**IA  
IG** BACCI • TSAPARIAN • GORMLY  
INDUSTRIAL GROUP



## Property HIGHLIGHTS



Gated Industrial Park



Perfect For Warehouse  
and Manufacturing Uses



Ample Parking



4 Dock High &  
4 Ground Level Loading



17' Clear Height



Located in  
Unincorporated  
Los Angeles

## Pricing SUMMARY

Lease Rate: \$1.00 PSF/Mo NNN  
Op.Ex: \$0.39



AVALON BLVD

±21,418 SF

±18,894 SF

**13110**  
S AVALON BLVD

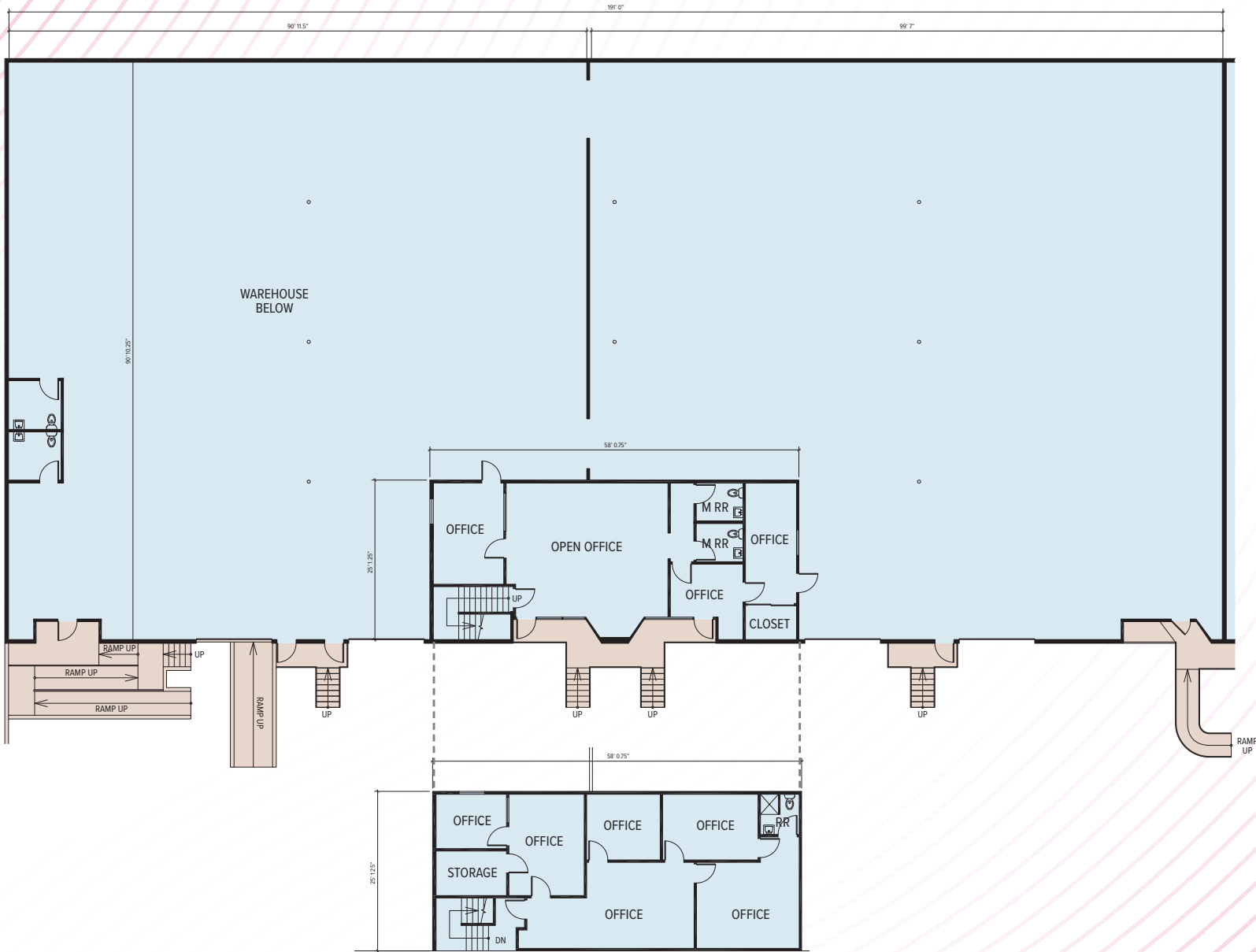
**13106**  
S AVALON BLVD

132ND ST



**AERIAL**

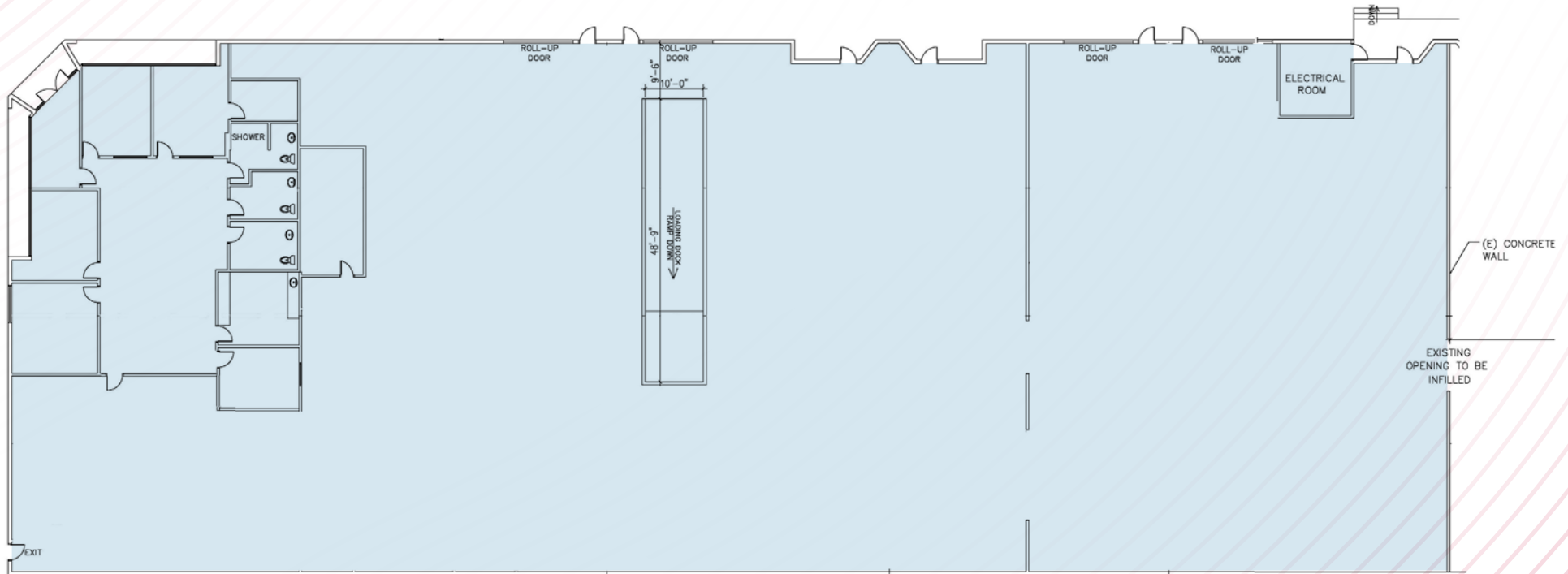
NOTE: Drawing not to scale. All measurements and sizes are approximate.



**2<sup>ND</sup> FLOOR OFFICE**

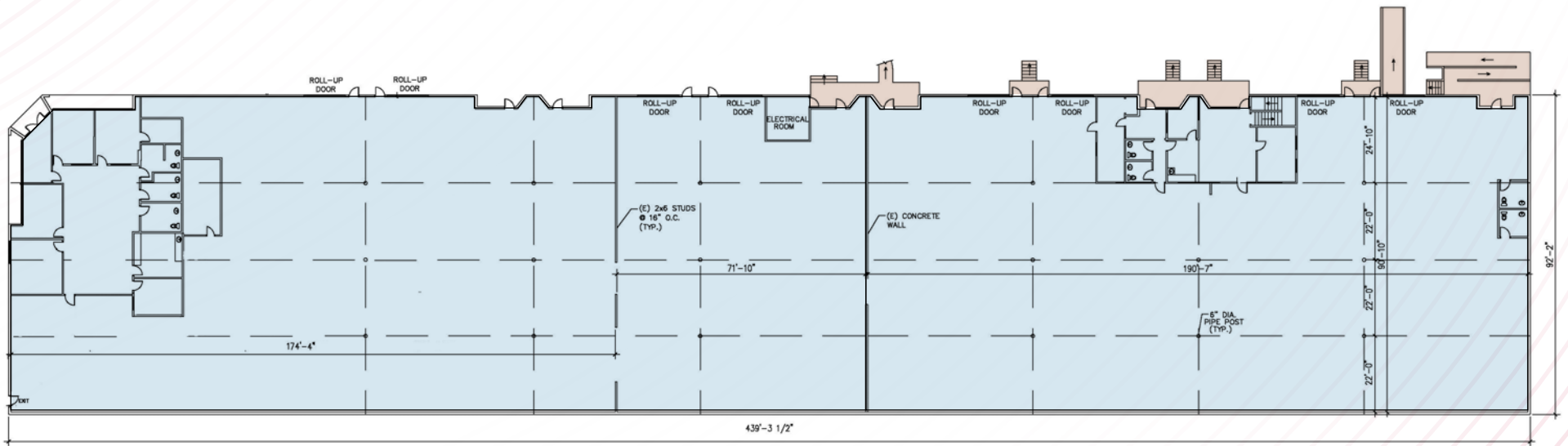
**13 106 S AVALON  
FLOOR PLAN**

**NOTE:** Drawing not to scale. All measurements and sizes are approximate.



NOTE: Drawing not to scale. All measurements and sizes are approximate.

# 13110 S AVALON FLOOR PLAN



NOTE: Drawing not to scale. All measurements and sizes are approximate.

13106 - 13110  
S AVALON  
**FLOOR PLAN**

13106-13110

AVALON  
BLVD

*AVAILABLE SF*

±40,312 SF Total

*LAND SIZE*

±154,507 SF

*PARCEL NO*

6134-001-007

*USE*

Manufacturing

*ZONING*

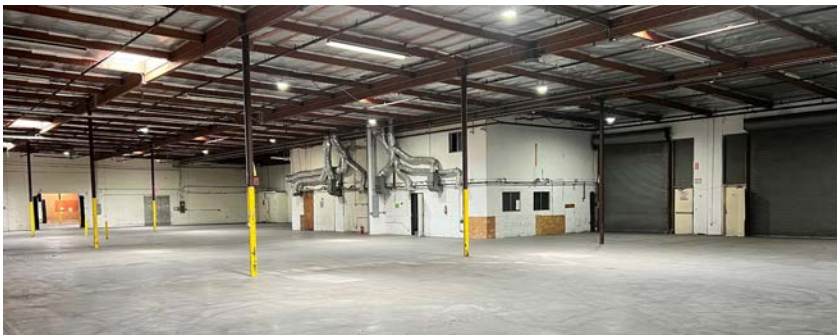
C2

*OFFICE SF*

±3,809 SF



*Property*  
PHOTOS

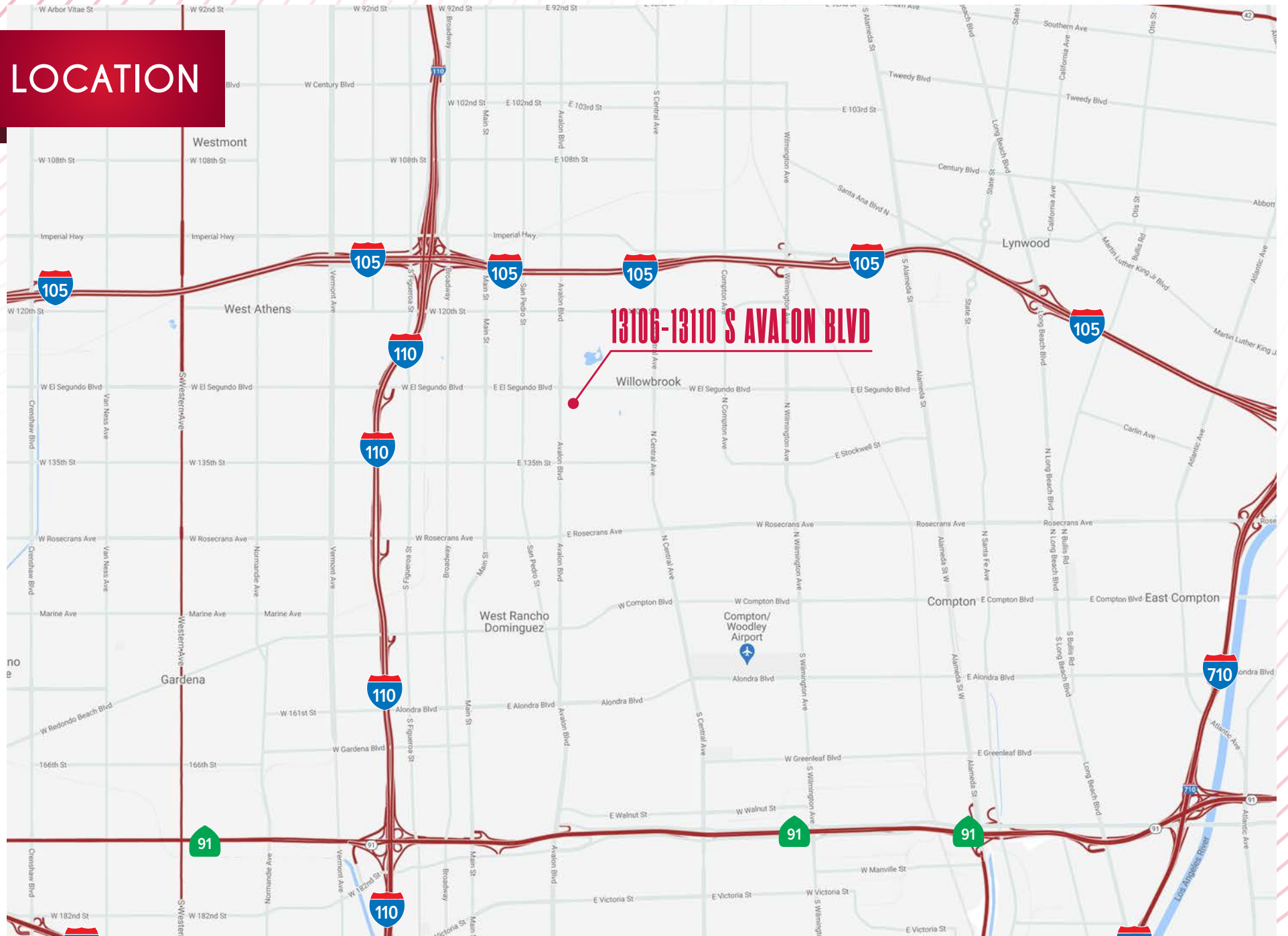


13106 S AVALON  
PHOTOS





# LOCATION





**San Gabriel Valley**  
 Base: 179,266,354 SF  
 Vacancy Rate: 5.9%  
 Availability Rate: 7.7%  
 Direct Asking Rate: \$1.58 PSF  
 Overall Rate: \$1.56 PSF  
 Median Price/Bldg SF: \$349.28  
 Median Price/Land SF: \$133.72

**Central Los Angeles**  
 Base: 245,415,079 SF  
 Vacancy Rate: 6.3%  
 Availability Rate: 8.7%  
 Direct Asking Rate: \$1.35 PSF  
 Overall Rate: \$1.35 PSF  
 Median Price/Bldg SF: \$246.49  
 Median Price/Land SF: \$175.68

**South Bay**  
 Base: 196,096,245 SF  
 Vacancy Rate: 4.9%  
 Availability Rate: 7.2%  
 Direct Asking Rate: \$1.69 PSF  
 Overall Rate: \$1.64 PSF  
 Median Price/Bldg SF: \$283.35  
 Median Price/Land SF: \$144.90

**Mid Counties**  
 Base: 114,577,384 SF  
 Vacancy Rate: 5.5%  
 Availability Rate: 8.5%  
 Direct Asking Rate: \$1.61 PSF  
 Overall Rate: \$1.59 PSF  
 Median Price/Bldg SF: \$277.12  
 Median Price/Land SF: \$152.19

**Orange County**  
 Base: 234,611,459 SF  
 Vacancy Rate: 4.4%  
 Availability Rate: 7.4%  
 Direct Asking Rate: \$1.65 PSF  
 Overall Rate: \$1.63 PSF  
 Median Price/Bldg SF: \$370.99  
 Median Price/Land SF: \$151.44

**Inland Empire West**  
 Base: 355,896,866 SF  
 Vacancy Rate: 6.1%  
 Availability Rate: 11.7%  
 Direct Asking Rate: \$1.46 PSF  
 Overall Rate: \$1.39 PSF  
 Median Price/Bldg SF: \$307.13  
 Median Price/Land SF: \$125.66

**Inland Empire East**  
 Base: 313,317,611 SF  
 Vacancy Rate: 8.7%  
 Availability Rate: 12.6%  
 Direct Asking Rate: \$1.17 PSF  
 Overall Rate: \$1.05 PSF  
 Median Price/Bldg SF: \$270.86  
 Median Price/Land SF: \$79.26

**13106-10 S AVALON BLVD**

**Q2 2024 LA BASIN MARKET SUMMARY & DRAYAGE MAP**

PREPARED BY:  
 LAC-I Research  
 Lejo Mammen - Director of Research  
 lmammen@lee-associates.com

Sources: LAC-I Research, CoStar  
 This survey includes data on industrial properties exceeding 5,000 square feet in size.

# DEMOGRAPHICS



## POPULATION

5 Miles	10 Miles	15 Miles	20 Miles
888,588	3.07 M	5.52 M	7.39 M



## AVERAGE HH INCOME

5 Miles	10 Miles	15 Miles	20 Miles
\$91,818	\$111,373	\$126,434	\$133,389

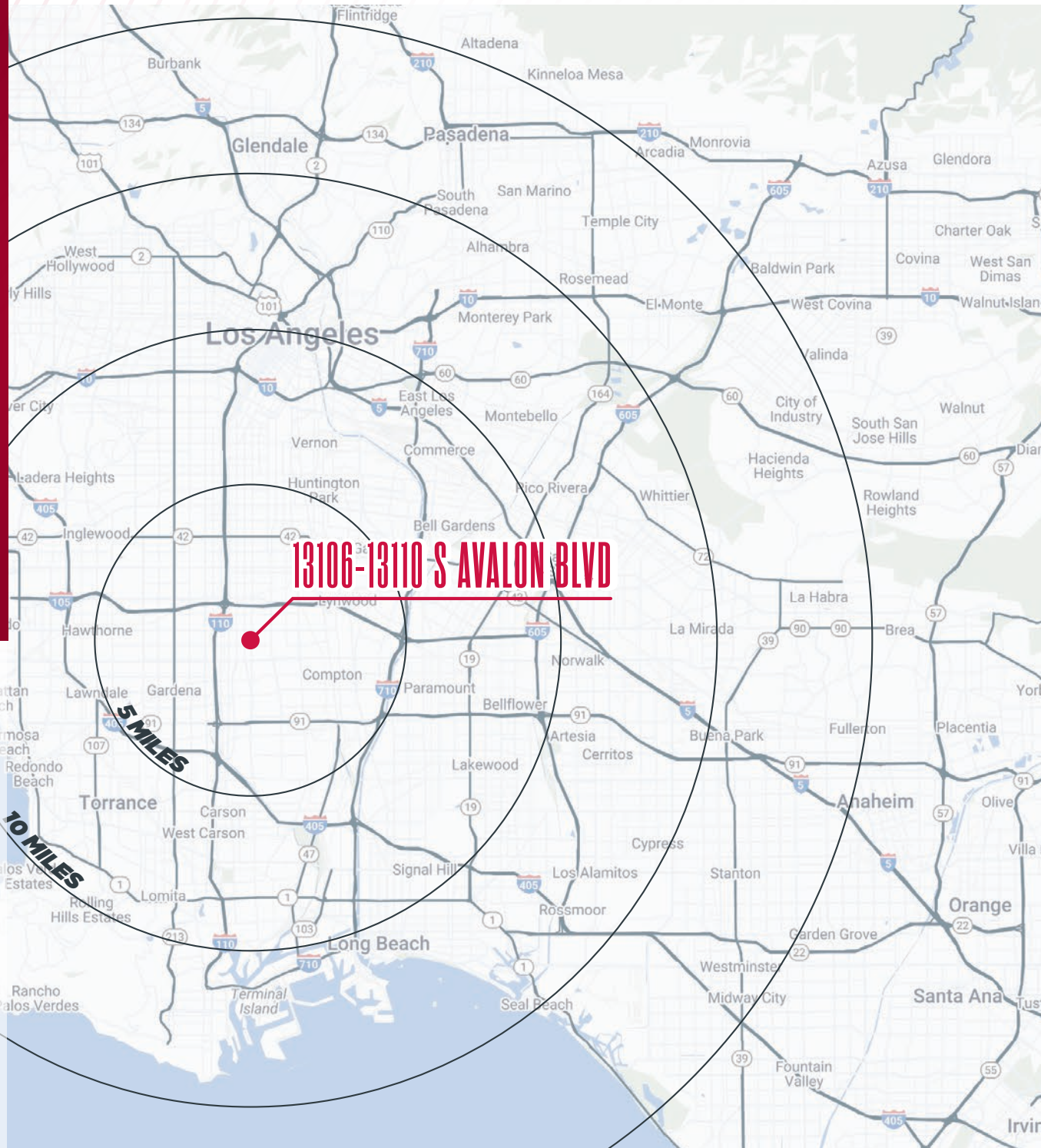


## EMPLOYEES

5 Miles	10 Miles	15 Miles	20 Miles
24,189	130,269	279,637	385,787

## DRIVING DISTANCE FROM PROPERTY

- DTLA: 12 MILES
- KOREATOWN: 13 MILES
- WEST HOLLYWOOD: 20 MILES
- CULVER CITY: 16 MILES
- PASADENA: 22 MILES
- BEVERLY HILLS: 21 MILES
- SANTA MONICA: 11 MILES
- LAX: 22 MILES
- LA & LB PORTS: 17 MILES



**PETER D. BACCI**

SIOR | Executive VP, Principal

[pbacci@lee-associates.com](mailto:pbacci@lee-associates.com)

323.767.2022

LIC NO 00946253

**MICHAEL H. TSAPARIAN**

CCIM | SIOR | Executive VP, Principal

[mtsaparian@lee-associates.com](mailto:mtsaparian@lee-associates.com)

323.767.2111

LIC NO 00901326

**COLE C. CERVANTES**

[ccervantes@lee-associates.com](mailto:ccervantes@lee-associates.com)

714.235.3271

LIC NO 02143902

**13106-13110**

**S AVALON BLVD**

**LOS ANGELES, CA 90061**



The information contained herein is obtained from sources believed to be reliable. However, we have not verified it and make no guarantees, warranties or representations as to the completeness or accuracy thereof. The presentation of this property is used for example and is submitted subject to errors, omissions, change of price or conditions, and is subject to prior sale, lease or withdrawal without notice.