



±21 AC OMAK, WA

920 Engh Rd., Omak, WA 98841

Property Summary



DAILY TRAFFIC CONDITIONS

TRAFFIC COUNT	DAILY TRAFFIC
COUNT	10,313
STREET	Riverside Dr.
COUNT 2	7,108
STREET 2	State Route 97

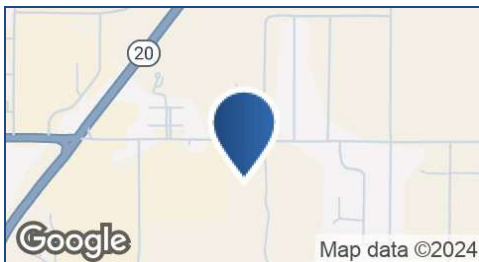
DEMOGRAPHICS - 2024

DEMOGRAPHICS	3 MILE	5 MILE	7 MILE
Estimated Population	7,854	10,007	12,282
Average HH Income	\$95,919	\$96,947	\$94,101
Estimated Households	3,125	3,951	4,878

PROPERTY HIGHLIGHTS

- Anchored by The Home Depot
- Adjacent to Walmart
- Excellent access and visibility off of SR 97
- Ready for building permits
- Other area retailers include Safeway, Harbor Freight Tools, Rite Aid, O'Reilly Auto Parts, Dollar Tree, Big 5 Sporting Goods, Rent-A-Center, and Grocery Outlet

* Figures shown represent estimates



KEN STEPHENS

813.349.8418

kstephens@retail-pa.com

ROYCE COTTLE

206.999.3483

rcottle@leibsohn.com

Retail Property Advisors // 813.530.2770 // 611 W. Bay St. // Suite 2H, Tampa, FL 33606 // Retail-PA.com

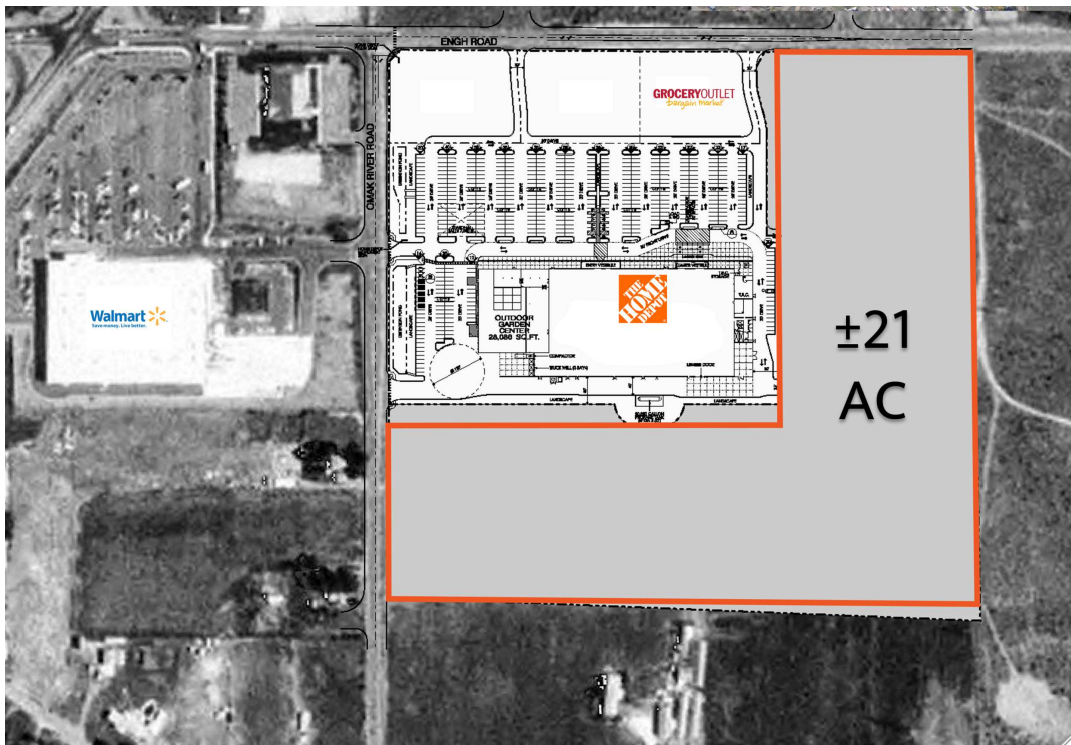
ATLANTA // TAMPA // PASADENA, CA // AUBURN // SARASOTA // BALTIMORE

No warranty or representation, expressed or implied, is made as to the accuracy of the information contained herein, and same is submitted subject to errors, omissions, change of price, rental or other conditions, withdrawal without notice, any special list conditions imposed by our Principals.



±21 AC OMAK, WA
920 Engh Rd., Omak, WA 98841

Location Maps



KEN STEPHENS
813.349.8418
kstephens@retail-pa.com

ROYCE COTTLE
206.999.3483
rcottle@leibsohn.com

Retail Property Advisors // 813.530.2770 // 611 W. Bay St. // Suite 2H, Tampa, FL 33606 // Retail-PA.com

ATLANTA // TAMPA // PASADENA, CA // AUBURN // SARASOTA // BALTIMORE

No warranty or representation, expressed or implied, is made as to the accuracy of the information contained herein, and same is submitted subject to errors, omissions, change of price, rental or other conditions, withdrawal without notice, any special list conditions imposed by our Principals.