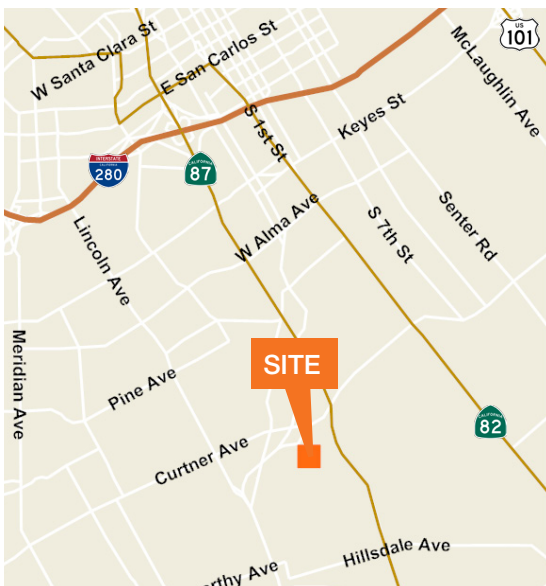




For Sale

±3 to 5 Acre Site for Redevelopment



In the heart of Silicon Valley near downtown San Jose

General Planned Public Quasi Public and adjacent to Transit Residential

Allowed and conditional uses include schools, churches, residential care facilities and daycare centers

Approximately 0.3 miles from VTA Light Rail station

Quick and easy access to Highway 87

Contact

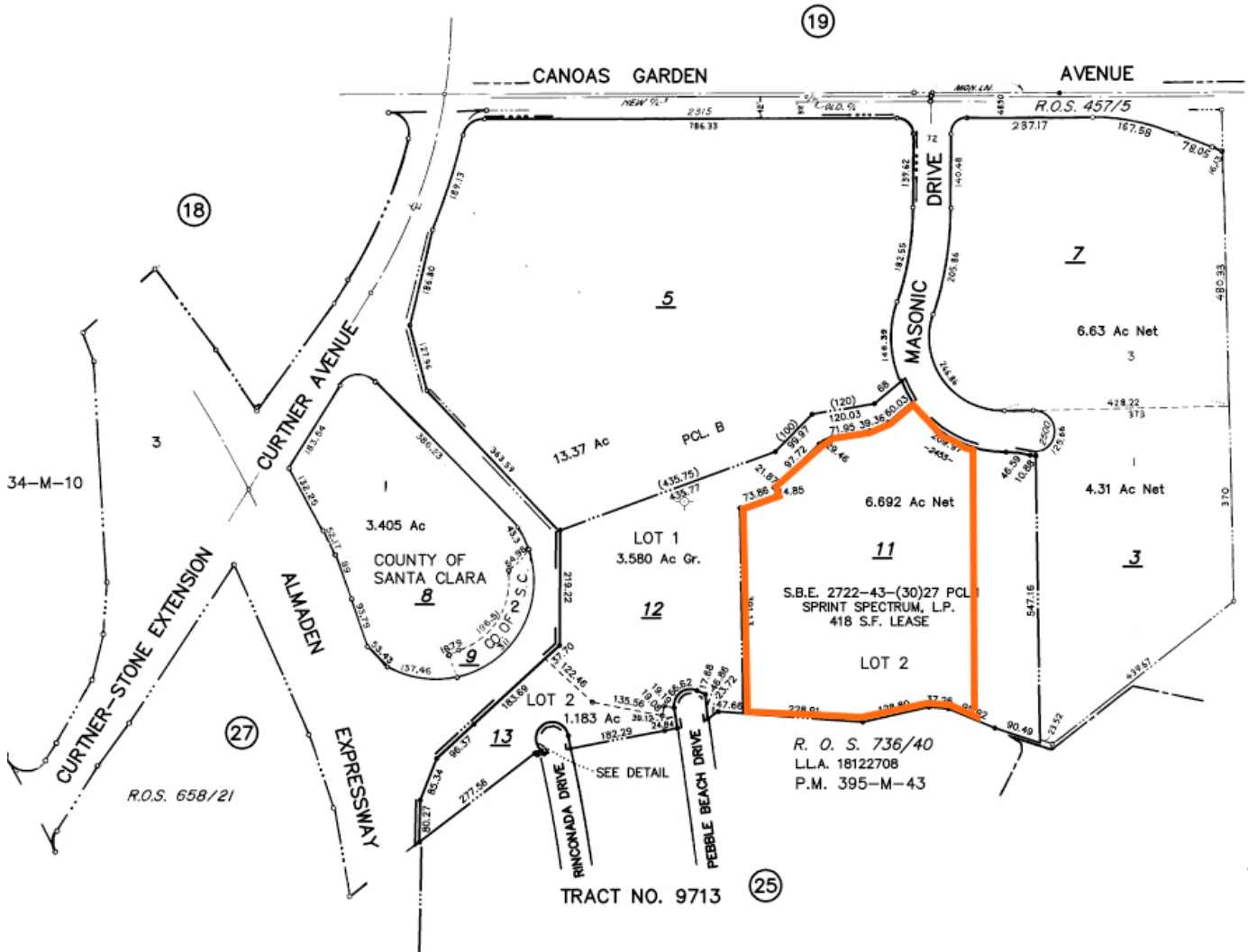
Justin Hedberg
408.588.2317
jhedberg@kiddermathews.com
LIC #01480759

Chris Rowe
408.588.2313
crowe@kiddermathews.com
LIC #01329262

kiddermathews.com

For Sale

±3 to 5 Acre Site for Redevelopment



Contact

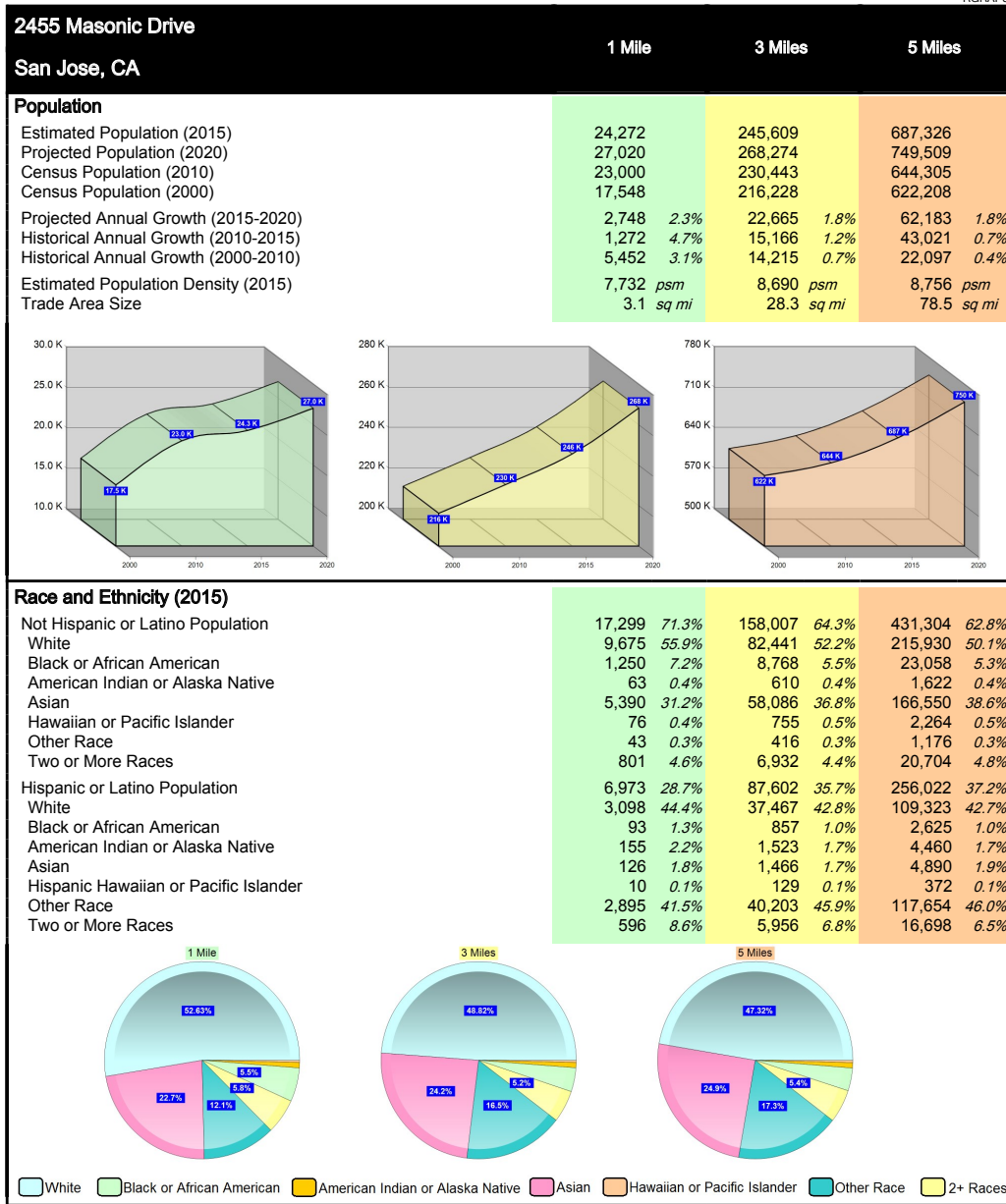
Justin Hedberg
408.588.2317
jhedberg@kiddermathews.com
LIC #01480759

Chris Rowe
408.588.2313
crowe@kiddermathews.com
LIC #01329262

kiddermathews.com

For Sale

±3 to 5 Acre Site for Redevelopment - Demographics



This report was produced using data from private and government sources deemed to be reliable. The information herein is provided without representation or warranty.

Contact

Justin Hedberg
408.588.2317
jhedberg@kiddermathews.com
LIC #01480759

Chris Rowe
408.588.2313
crowe@kiddermathews.com
LIC #01329262

kiddermathews.com

This information supplied herein is from sources we deem reliable. It is provided without any representation, warranty or guarantee, expressed or implied as to its accuracy. Prospective Buyer or Tenant should conduct an independent investigation and verification of all matters deemed to be material, including, but not limited to, statements of income and expenses. Consult your attorney, accountant, or other professional advisor.

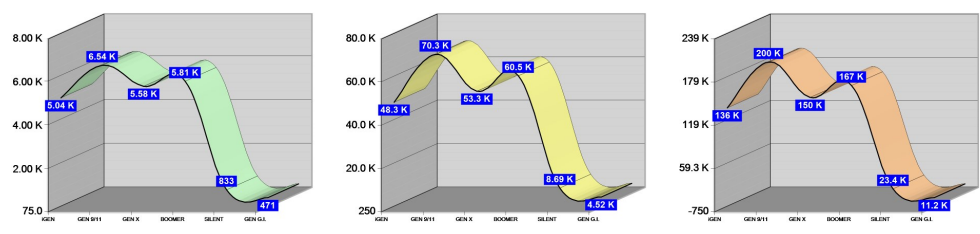


For Sale

±3 to 5 Acre Site for Redevelopment - Demographics

2455 Masonic Drive San Jose, CA	1 Mile	3 Miles	5 Miles
Age Distribution (2015)			
Age Under 5 Years	1,965 8.1%	17,208 7.0%	46,590 6.8%
Age 5 to 9 Years	1,698 7.0%	16,248 6.6%	45,966 6.7%
Age 10 to 14 Years	1,380 5.7%	14,836 6.0%	43,292 6.3%
Age 15 to 19 Years	1,148 4.7%	14,682 6.0%	44,223 6.4%
Age 20 to 24 Years	1,309 5.4%	17,320 7.1%	50,468 7.3%
Age 25 to 29 Years	1,821 7.5%	18,805 7.7%	51,803 7.5%
Age 30 to 34 Years	2,262 9.3%	19,509 7.9%	53,032 7.7%
Age 35 to 39 Years	2,114 8.7%	18,621 7.6%	51,904 7.6%
Age 40 to 44 Years	1,814 7.5%	17,849 7.3%	50,574 7.4%
Age 45 to 49 Years	1,649 6.8%	16,868 6.9%	47,878 7.0%
Age 50 to 54 Years	1,521 6.3%	16,412 6.7%	46,851 6.8%
Age 55 to 59 Years	1,469 6.1%	15,200 6.2%	42,334 6.2%
Age 60 to 64 Years	1,206 5.0%	12,335 5.0%	33,644 4.9%
Age 65 to 69 Years	969 4.0%	9,620 3.9%	25,621 3.7%
Age 70 to 74 Years	644 2.7%	6,886 2.8%	18,532 2.7%
Age 75 to 79 Years	477 2.0%	5,076 2.1%	13,629 2.0%
Age 80 to 84 Years	356 1.5%	3,618 1.5%	9,749 1.4%
Age 85 Years or Over	471 1.9%	4,517 1.8%	11,236 1.6%
Median Age	35.6	35.7	35.3
Generation (2015)			
iGeneration (Age Under 15 Years)	5,044 20.8%	48,292 19.7%	135,849 19.8%
Generation 9/11 Millennials (Age 15 to 34 Years)	6,539 26.9%	70,316 28.6%	199,526 29.0%
Gen Xers (Age 35 to 49 Years)	5,577 23.0%	53,338 21.7%	150,356 21.9%
Baby Boomers (Age 50 to 74 Years)	5,808 23.9%	60,452 24.6%	166,982 24.3%
Silent Generation (Age 75 to 84 Years)	833 3.4%	8,694 3.5%	23,378 3.4%
G.I. Generation (Age 85 Years or Over)	471 1.9%	4,517 1.8%	11,236 1.6%

This report was produced using data from private and government sources deemed to be reliable. The information herein is provided without representation or warranty.



Contact

Justin Hedberg
408.588.2317
jhedberg@kiddermathews.com
LIC #01480759

Chris Rowe
408.588.2313
crowe@kiddermathews.com
LIC #01329262

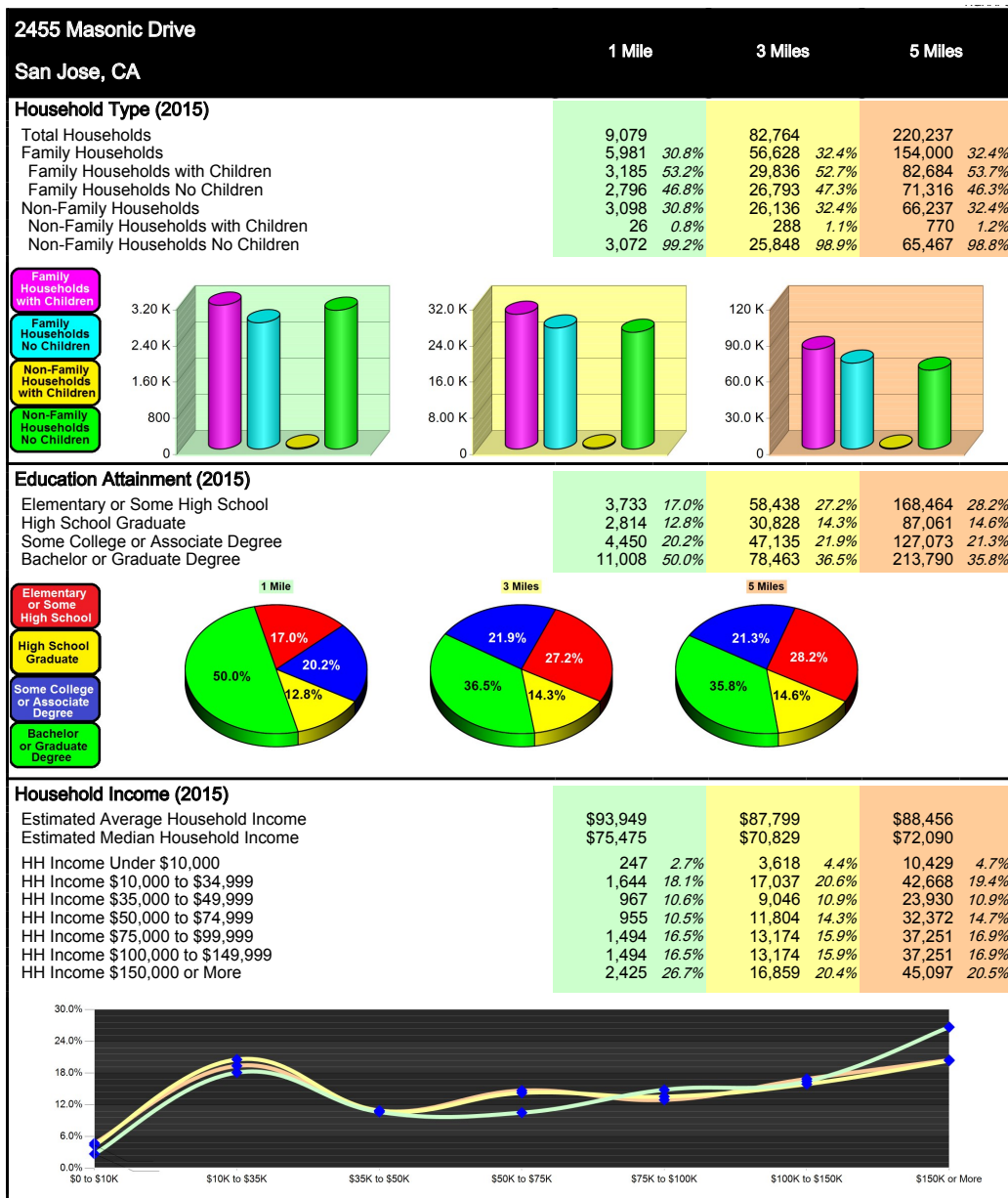
kiddermathews.com

This information supplied herein is from sources we deem reliable. It is provided without any representation, warranty or guarantee, expressed or implied as to its accuracy. Prospective Buyer or Tenant should conduct an independent investigation and verification of all matters deemed to be material, including, but not limited to, statements of income and expenses. Consult your attorney, accountant, or other professional advisor.



For Sale

±3 to 5 Acre Site for Redevelopment - Demographics



This report was produced using data from private and government sources deemed to be reliable. The information herein is provided without representation or warranty.

Contact

Justin Hedberg
408.588.2317
jhedberg@kiddermathews.com
LIC #01480759

Chris Rowe
408.588.2313
crowe@kiddermathews.com
LIC #01329262

kiddermathews.com

For Sale - ±3 to 5 Acre Site for Redevelopment

Retail Amenities



Contact

Justin Hedberg
 408.588.2317
 jhedberg@kiddermathews.com
 LIC #01480759

Chris Rowe
 408.588.2313
 crowe@kiddermathews.com
 LIC #01329262

kiddermathews.com

This information supplied herein is from sources we deem reliable. It is provided without any representation, warranty or guarantee, expressed or implied as to its accuracy. Prospective Buyer or Tenant should conduct an independent investigation and verification of all matters deemed to be material, including, but not limited to, statements of income and expenses. Consult your attorney, accountant, or other professional advisor.