



RIVERPARK

C O R P O R A T E C E N T E R



South Jordan, Utah

Colliers



RiverPark Corporate Center, strategically positioned within the South Jordan submarket of the Salt Lake City MSA, presents a prime opportunity for corporate tenants. This 120-acre, 1,077,000 square foot Class A master-planned office campus, with immediate freeway access and a mere 20-minute drive to Salt Lake City International Airport, offers an unparalleled experience.

RiverPark’s meticulously curated environment enhances tenant experience, including access to 8 unique on-site restaurants ranging from fast casual to high end dining, a 125 room on-site hotel, a state-of-the-art fitness center, pickleball courts, ample parking, panoramic mountain vistas and a 35-acre green space with immediate access to miles of walking trails along the Jordan River, fostering a dynamic work-life balance.

Ownership and management is onsite, offering immediate hands on service and response.





BUILDINGS & AVAILABILITY:

BUILDING 1	
Suite 200	11,386 RSF
Suite 290	2,449 RSF
Suite 300	30,665 RSF

BUILDING 3	
Suite 300	4,983 RSF

BUILDING 4	
Suite 250	7,477 RSF
Suite 300	27,217 RSF

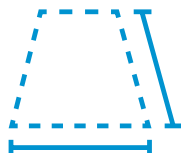
BUILDING 12	
Suite 150	12,756 RSF
Suite 200	14,250 RSF
Suite 275	5,006 RSF
Suite 300	28,587 RSF
Suite 400	27,045 RSF
Suite 500	26,502 RSF
Suite 650	5,081 RSF

BUILDING 14	
Suite 100	7,941 RSF
Suite 200	19,927 RSF
Suite 600	13,399 RSF

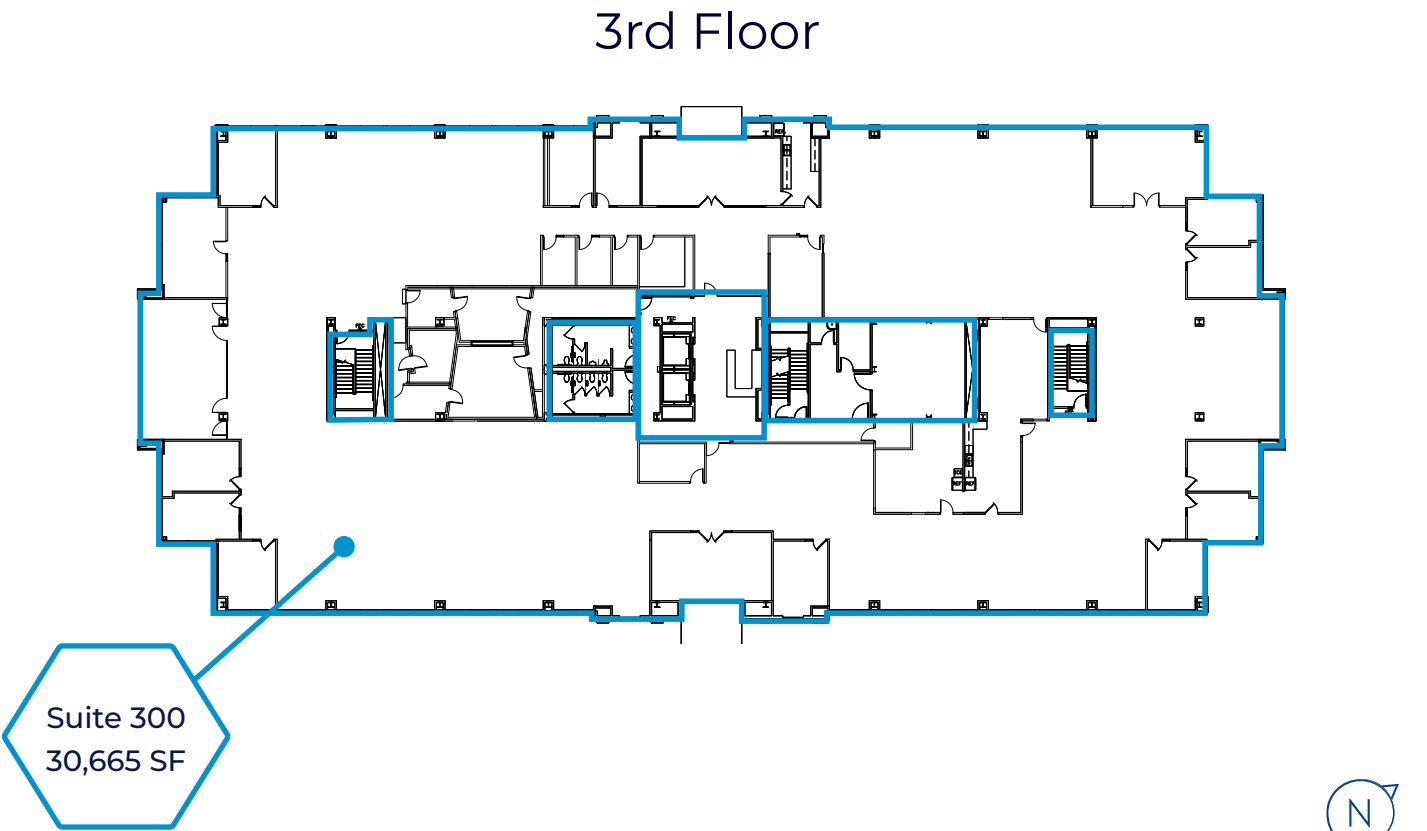
RiverPark 1 // 10653 South River Front Parkway



Lease Rate
\$29.00
Per Sq. Ft. / Full Service



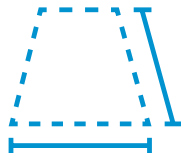
Space Available:
Suite 200
11,386 sq. ft.
Suite 290
2,449 sq. ft.
Suite 300
30,665 sq. ft.



RiverPark 3 // 10757 South River Front Parkway



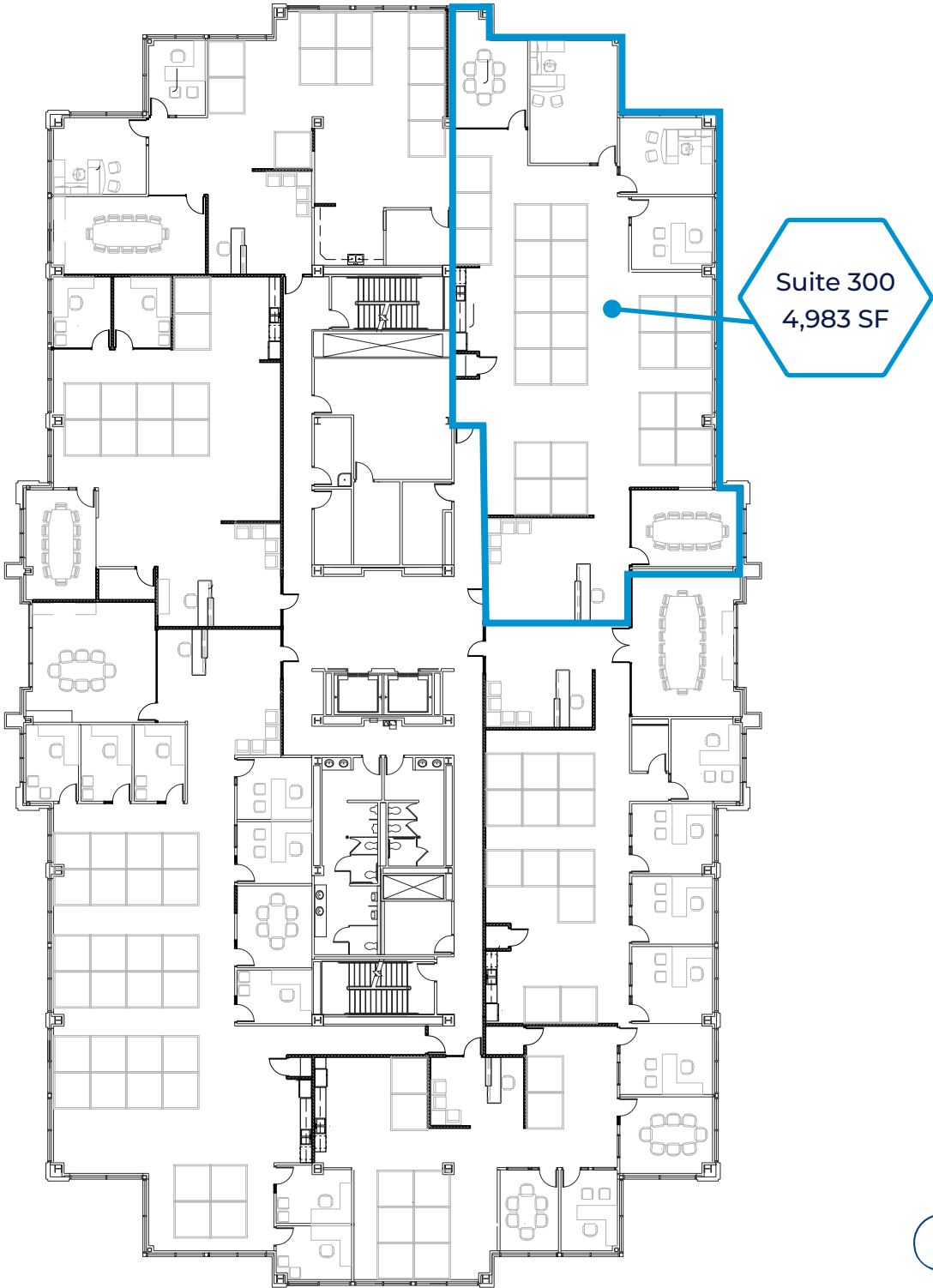
Lease Rate
\$29.00
Per Sq. Ft. / Full Service



Space Available:
Suite 300
4,983 sq. ft.



3rd Floor



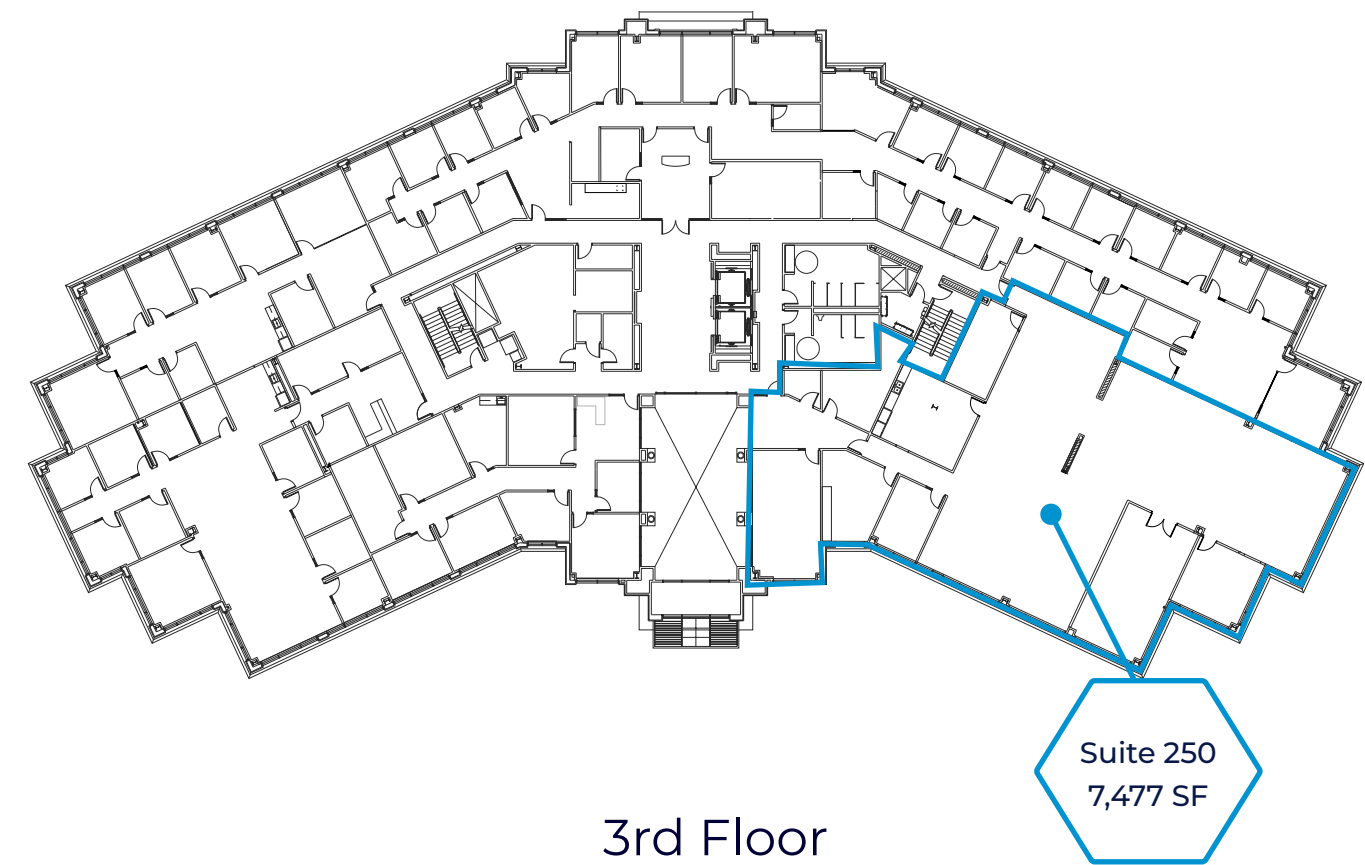
RiverPark 4 // 10813 South River Front Parkway

 Lease Rate
\$29.00
Per Sq. Ft. / Full Service

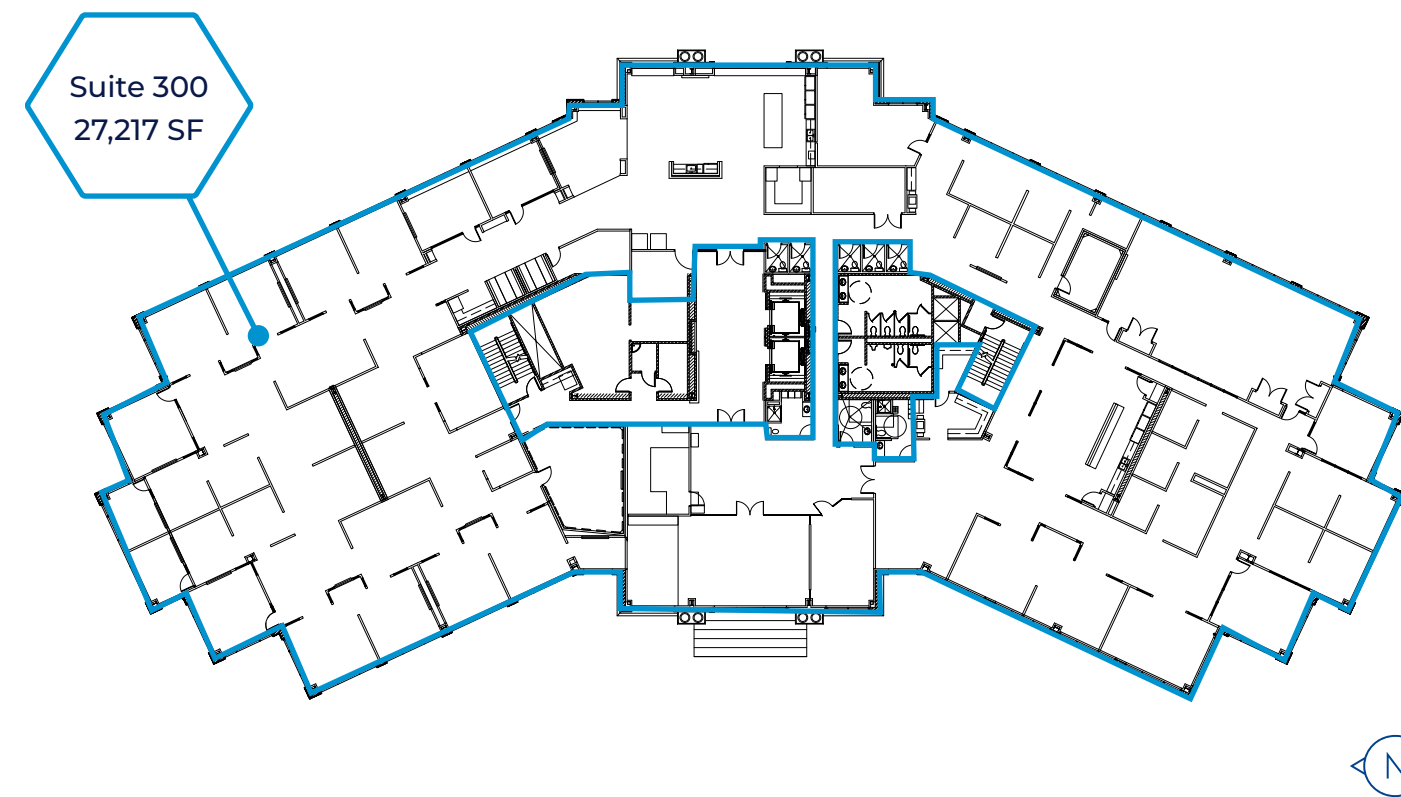
Space Available:
Suite 250
7,477 sq. ft.
Suite 300
27,217 sq. ft.



2nd Floor



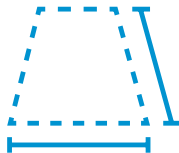
3rd Floor



RiverPark 12 // 10876 South River Front Parkway



Lease Rate
\$29.00
Per Sq. Ft. / Full Service

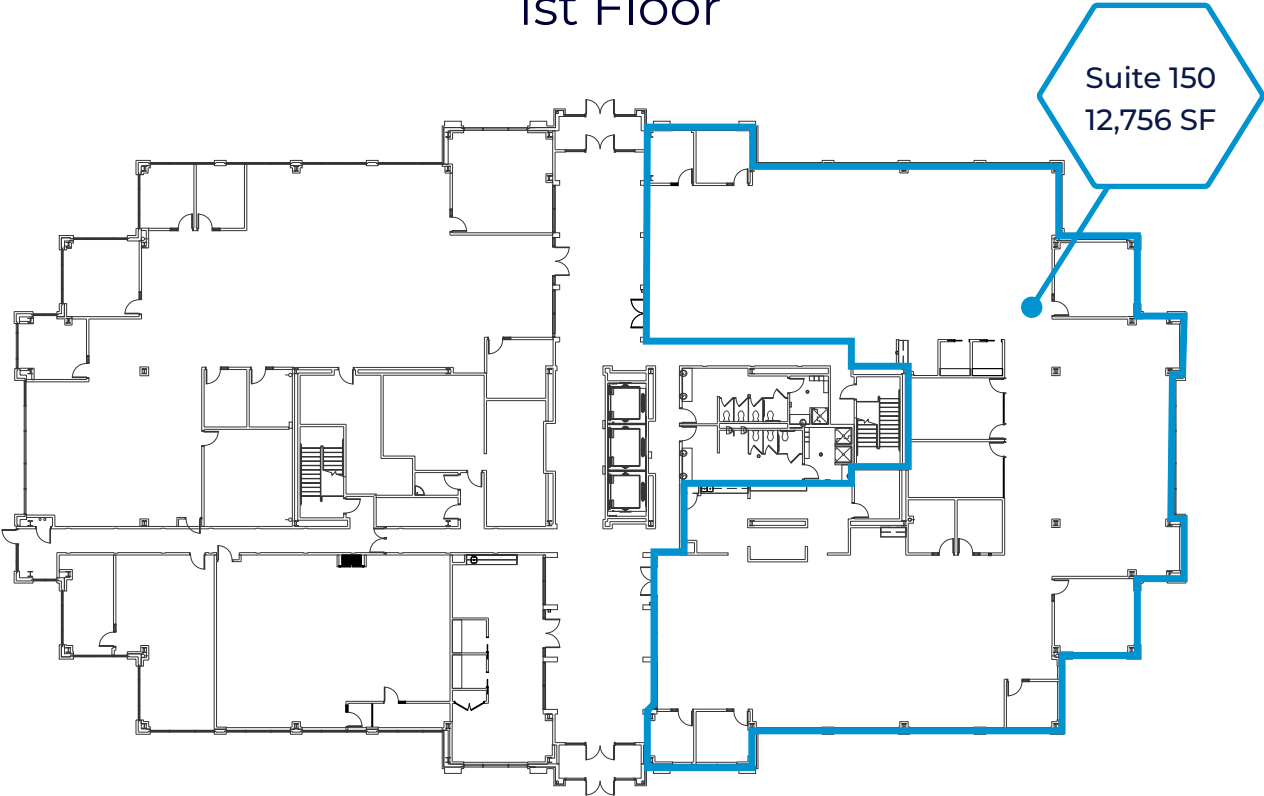


Space Available:

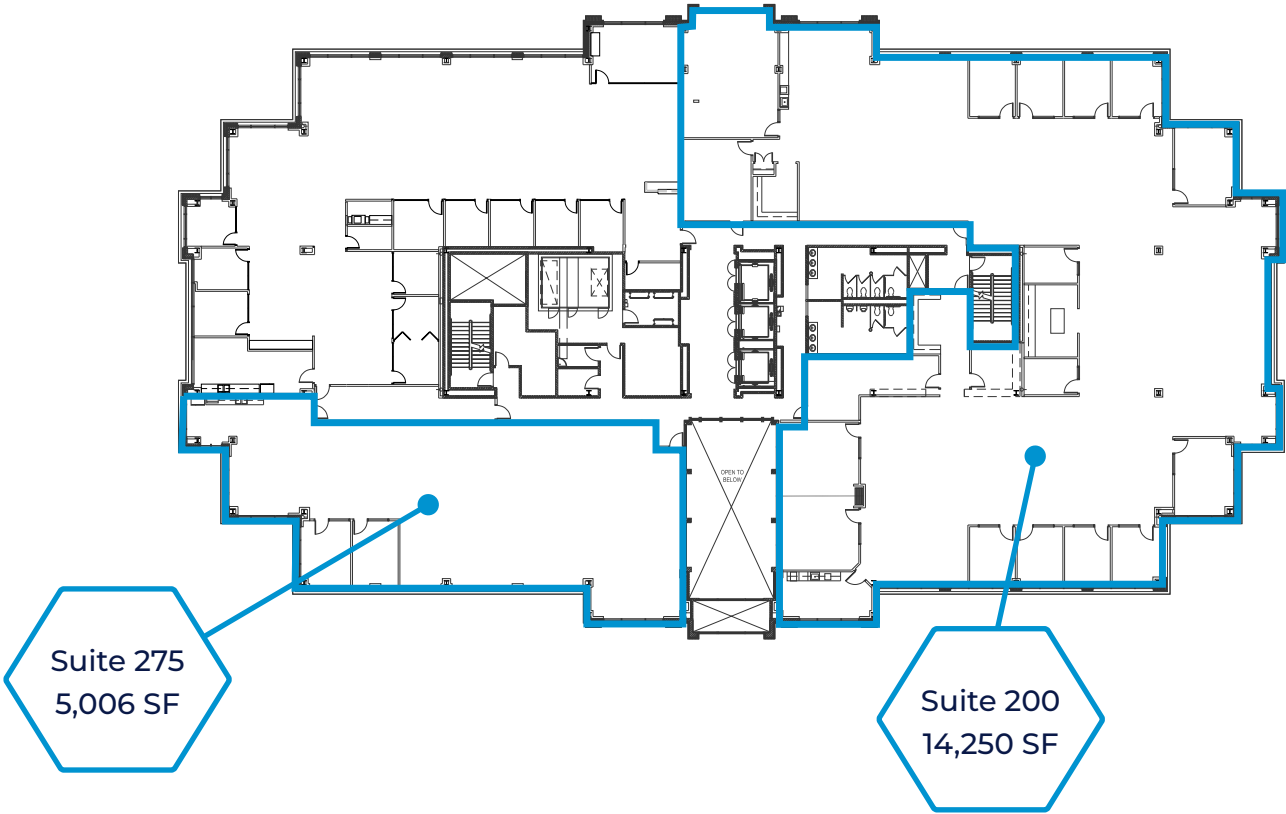
- | | |
|------------------------------------|------------------------------------|
| Suite 150
12,756 sq. ft. | Suite 400
27,045 sq. ft. |
| Suite 200
14,250 sq. ft. | Suite 500
26,502 sq. ft. |
| Suite 275
5,006 sq. ft. | Suite 650
5,081 sq. ft. |
| Suite 300
28,587 sq. ft. | |



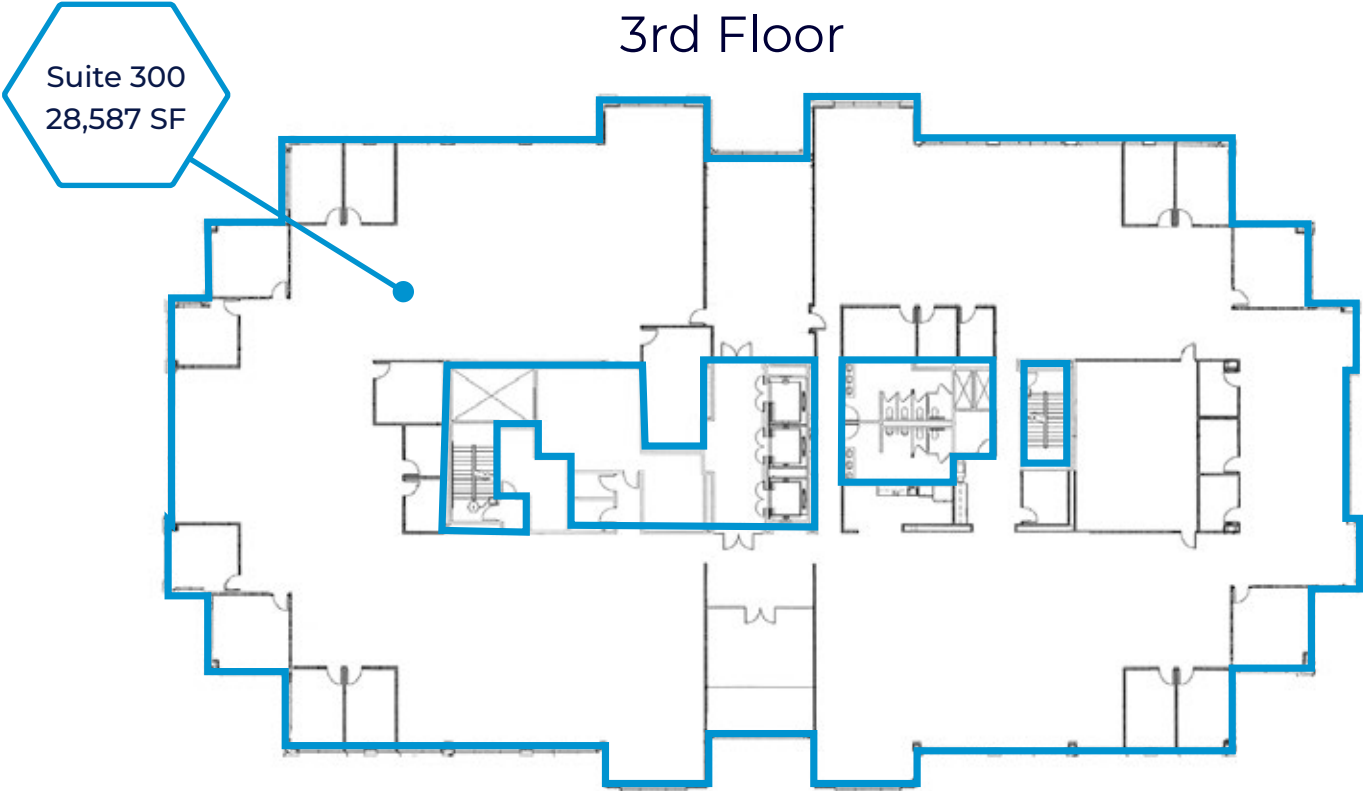
1st Floor



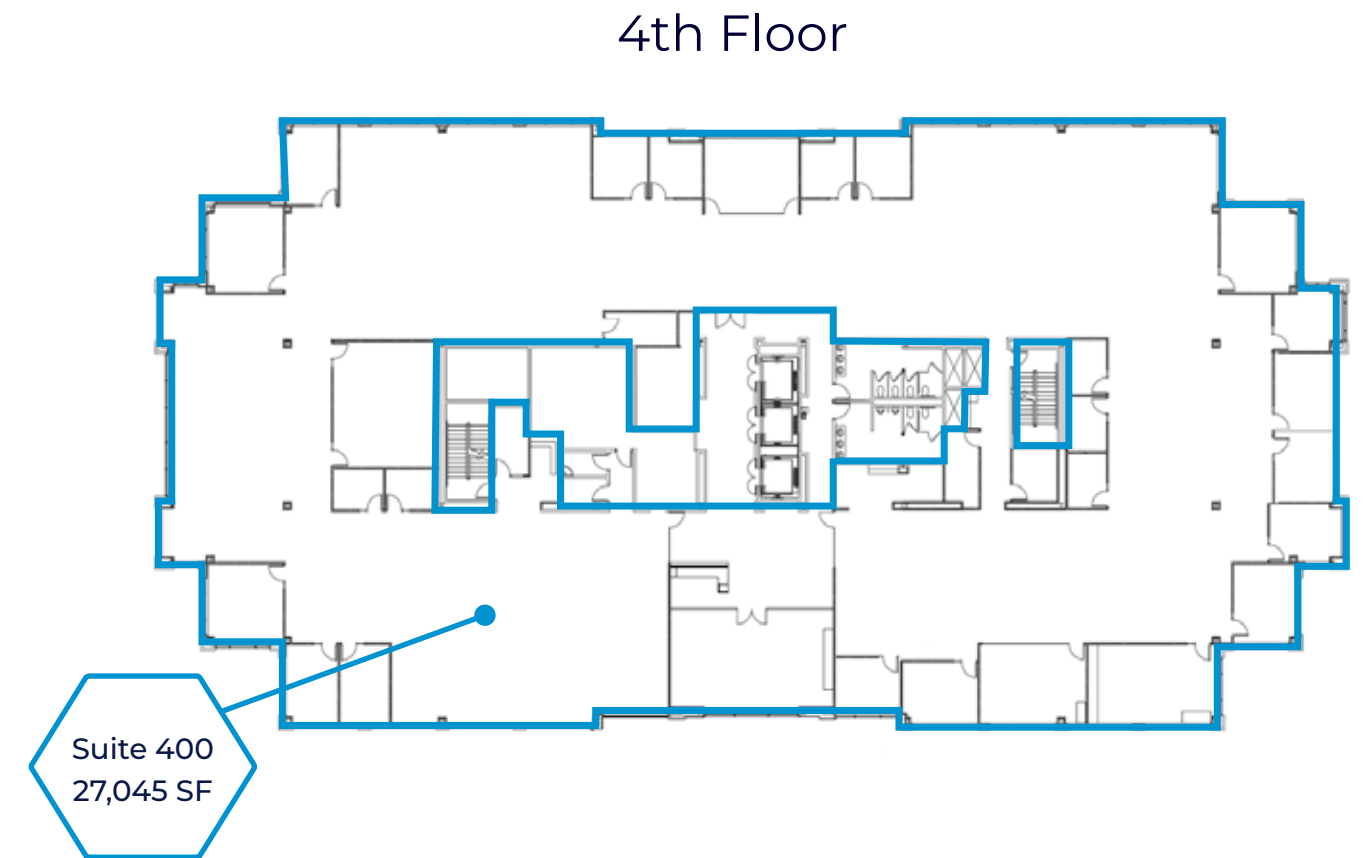
2nd Floor



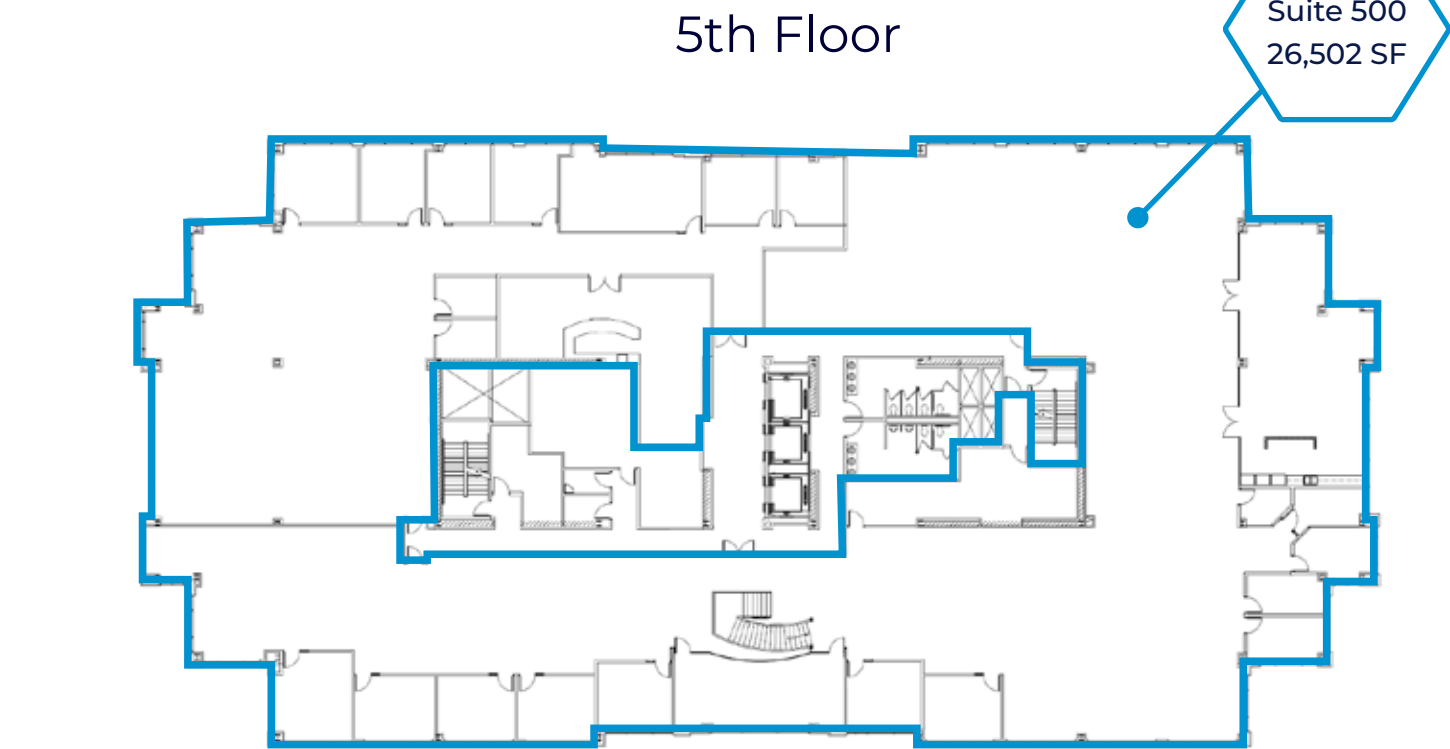
3rd Floor



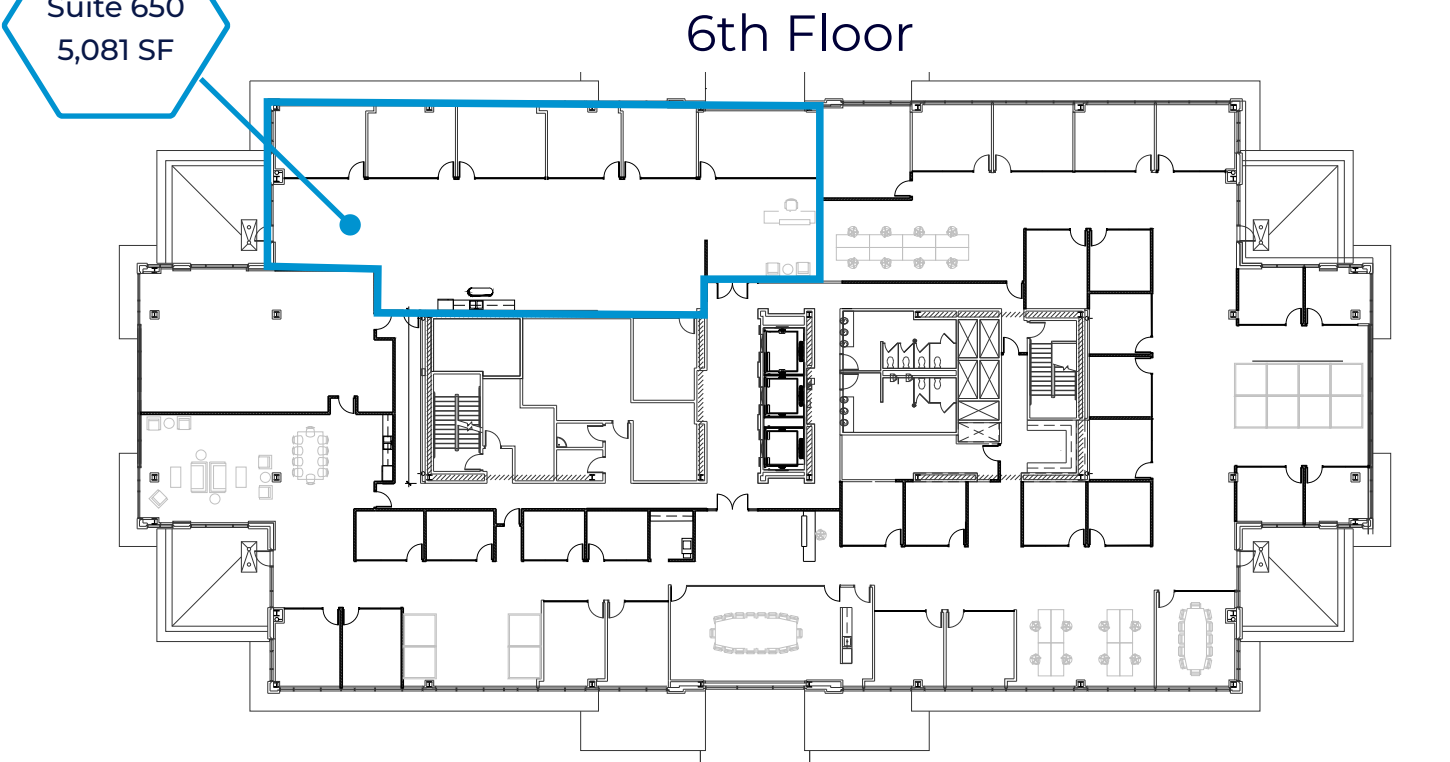
4th Floor



5th Floor

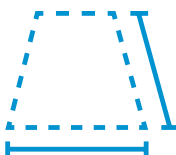


6th Floor



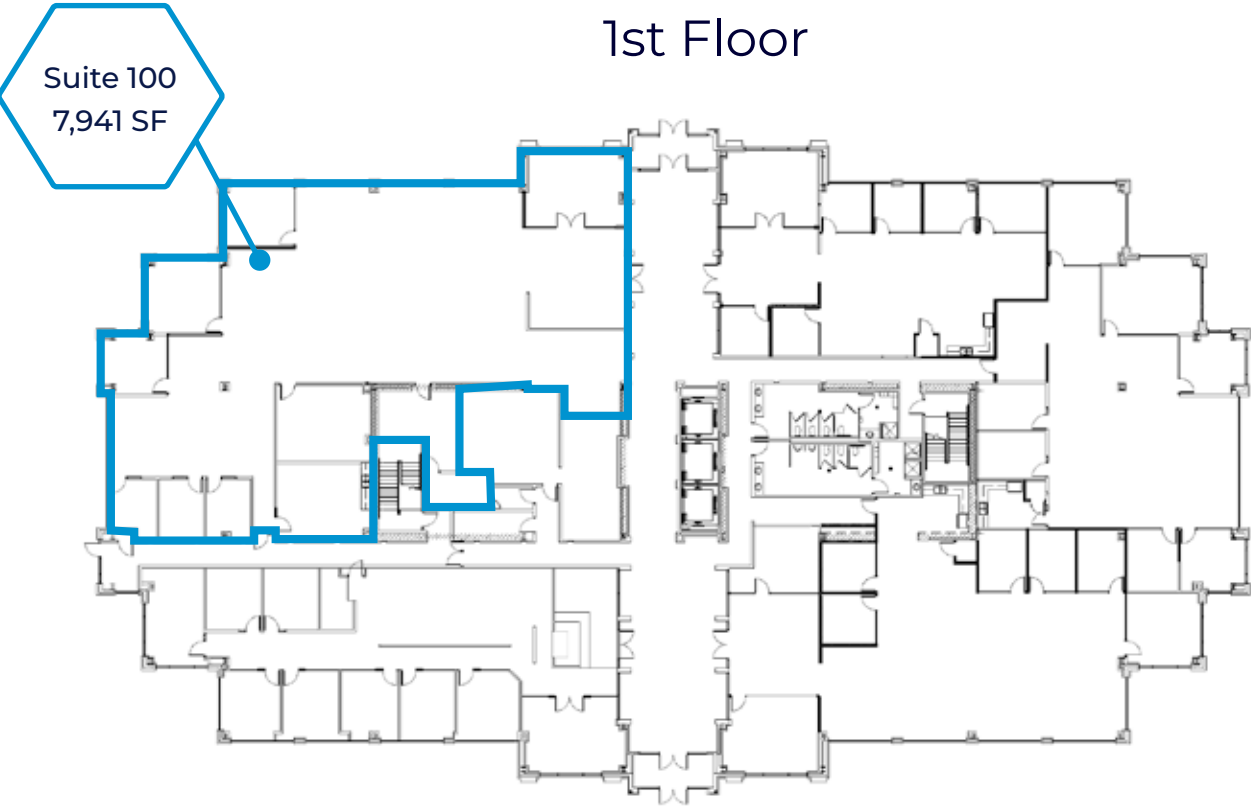
RiverPark 14 // 10808 South River Front Parkway

 Lease Rate
\$29.00
Per Sq. Ft. / Full Service

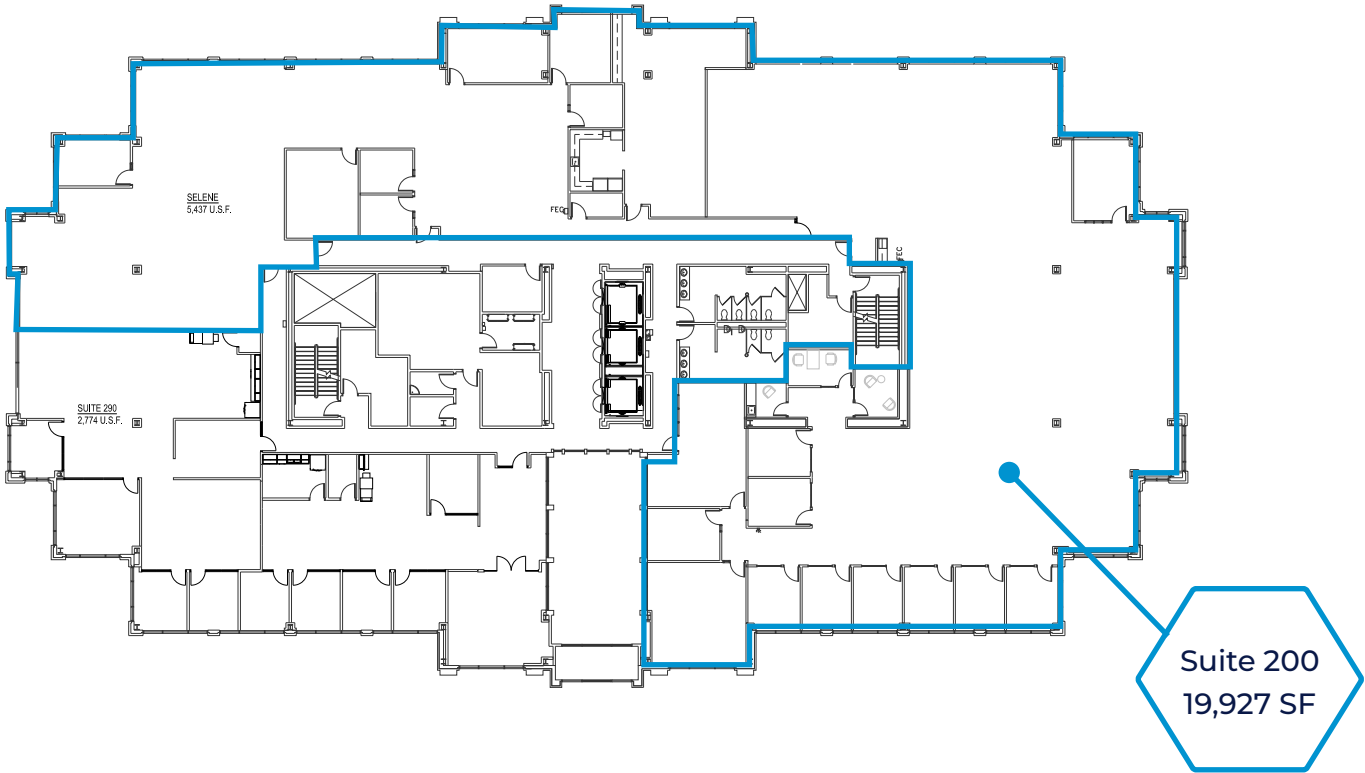


Space Available:
Suite 100
7,941 sq. ft.
Suite 200
19,927 sq. ft.
Suite 600
13,399 sq. ft.

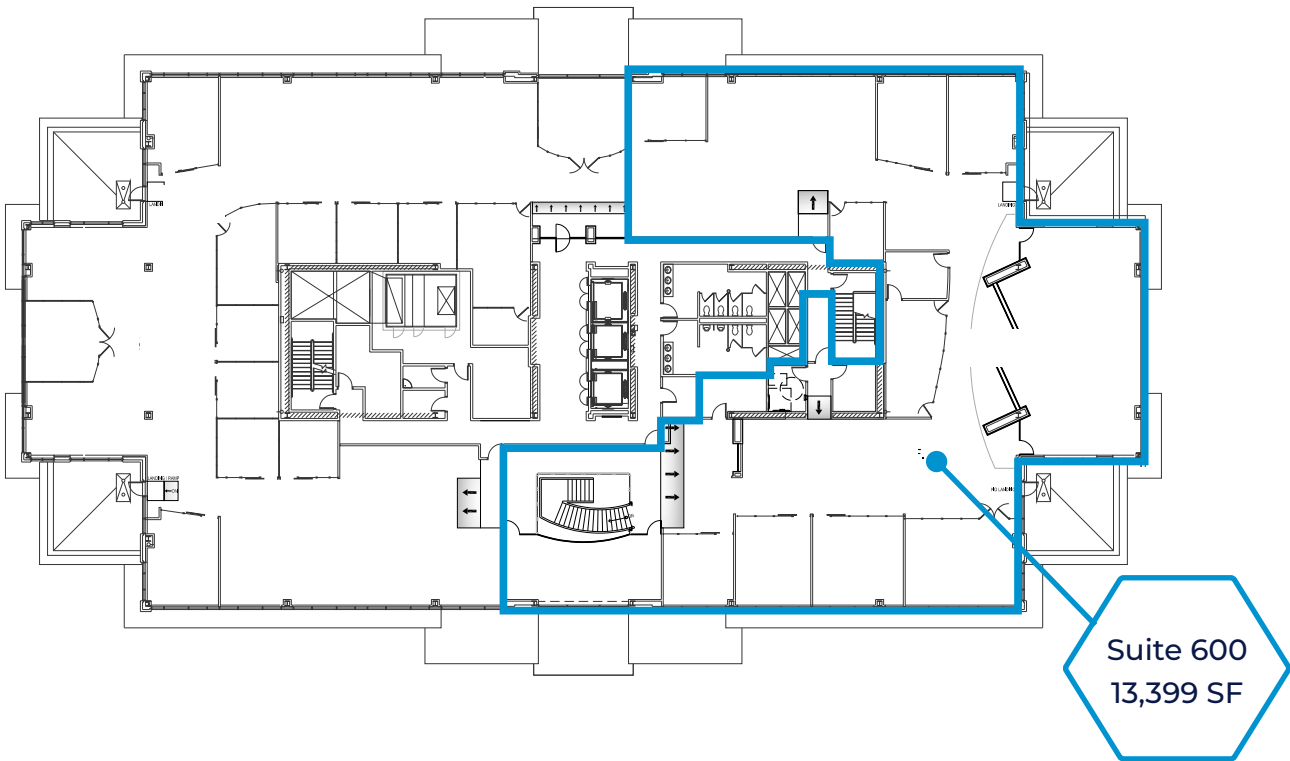
1st Floor



2nd Floor



6th Floor





On-Site Amenities

On-Site Amenities



Tenant Lounge

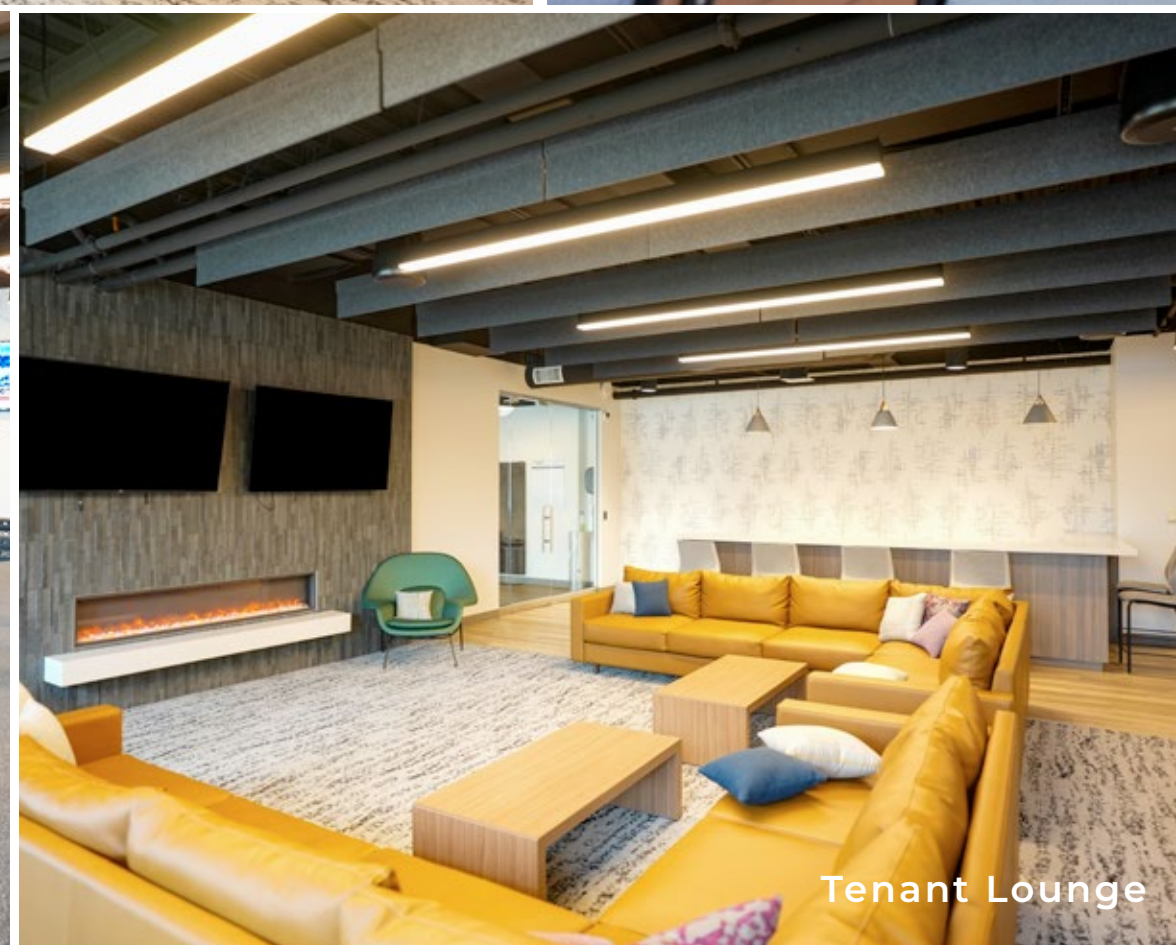


Tenant Lounge

Pickleball Pavillion



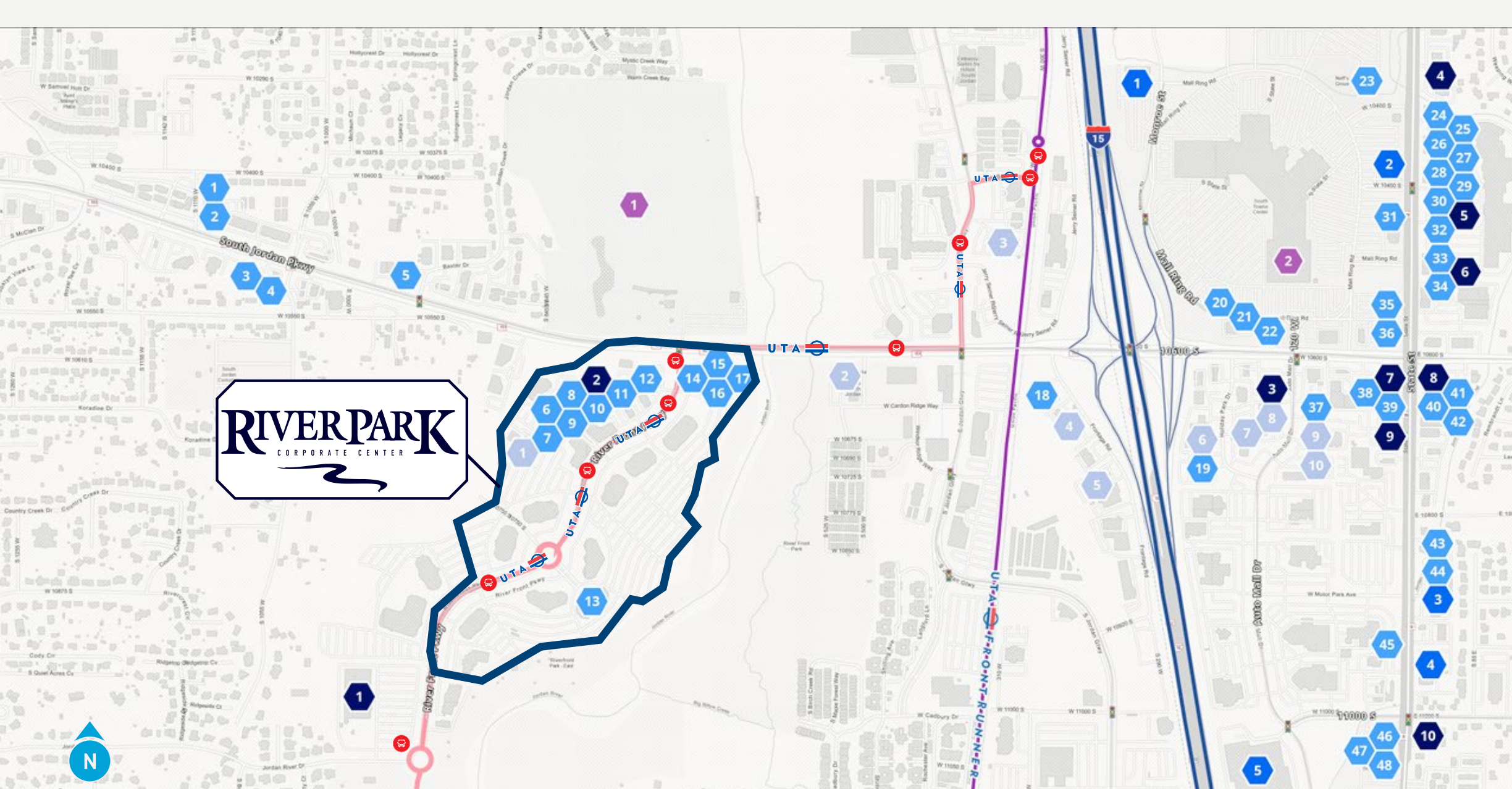
Fitness Center



Tenant Lounge



Tenant Lounge



Drive Times



AIRPORT
20 MINS



POINT OF THE MOUNTAIN
20 MINS



UNIVERSITY OF UTAH
30 MINS



DOWNTOWN SLC
20 MINS

AMENITIES



Bus Route Stops from
FrontRunner Station

HOTELS

1. Home2 Suites by Hilton
2. La Quinta Inn & Suites
3. Holiday Inn
4. Sleep Inn & Suites
5. Super 8 by Wyndham
6. Hampton by Hilton Inn & Suites
7. Courtyard by Marriott
8. Holiday Inn Express & Suites
9. Best Western / Cotton Tree Inn
10. Extended Stay America

RESTAURANTS

1. Biscotts Bakery & Cafe
2. Saffron Valley

3. Greek Souvlaki
4. Domino's
5. Kneaders
6. Market Street Grill
7. Tsunami
8. Macaroni Grill
9. Cafe Zupas
10. Barbacoa Mexican Grill
11. JCW's
12. Maria's Mexican Grill
13. Knickerbockers Deli
14. Momo's Cheesecake
15. RECHARGE PUB & GRUB
16. Bawarchi Indian
17. Beans & Brews Coffee House
18. R&R BBQ

19. Carvers Steak & Chops
20. Texas Roadhouse
21. Via 313 Pizza
22. Potbelly Sandwich Shop
23. Slackwater
24. Firehouse Subs
25. Rumbi Island Grill
26. Wingstop
27. Santorini's
28. Pei Wei
29. Santorini's Greek Grill
30. Chipotle Mexican Grill
31. Chili's Grill & Bar
32. Five Guys
33. Slapfish
34. Carl's Jr.
35. Olive Garden

36. El Pollo Loco
37. Wendy's
38. Bout Time Pub & Grub
39. Subway
40. Taco Bell
41. Einstein Bros Bagels
42. Jimmy Johns
43. IHOP
44. HuHot Mongolian Grill
45. Raising Cane's
46. Shake Shack
47. Mo' Bettahs
48. Vessel Kitchen

ENTERTAINMENT

1. Mulligans Golf & Games
2. Utah Hockey Club Training Facility

RETAIL

1. REI
2. Ethan Allen
3. Uinta Golf
4. Harbor Freight Tools
5. Costco Wholesale

SERVICE

1. Lifetime
2. Mountain America Credit Union
3. Zions First National Bank
4. Key Bank
5. Sport Clips
6. Sally Beauty
7. Chase Bank
8. US Bank
9. Trans West Credit Union
10. First Utah Bank



Brandon Fugal

+1 801 947 8300

brandon.fugal@colliers.com

Angela Kroneberger

+1 801 947 8300

angela.kroneberger@colliers.com

Josh Smith

+1 801 947 8300

josh.smith@colliers.com

Jason England

+1 801 446 0110

jengland@lppmgroup.com

The Colliers logo consists of the word "Colliers" in a white, serif font, set against a blue rectangular background. Below the blue background are three horizontal stripes in yellow, orange, and red.

Colliers

6440 S. Millrock Dr., Suite 500
Salt Lake City, UT 84121
Main: +1 801 947 8300
colliers.com

This document has been prepared by Colliers for advertising and general information only. Colliers makes no guarantees, representations or warranties of any kind, expressed or implied, regarding the information including, but not limited to, warranties of content, accuracy and reliability. Any interested party should undertake their own inquiries as to the accuracy of the information. Colliers excludes unequivocally all inferred or implied terms, conditions and warranties arising out of this document and excludes all liability for loss and damages arising there from. This publication is the copyrighted property of Colliers and /or its licensor(s). © 2025 All rights reserved.