

GATEWAY MEDICAL PLAZA

MARGATE, FLORIDA

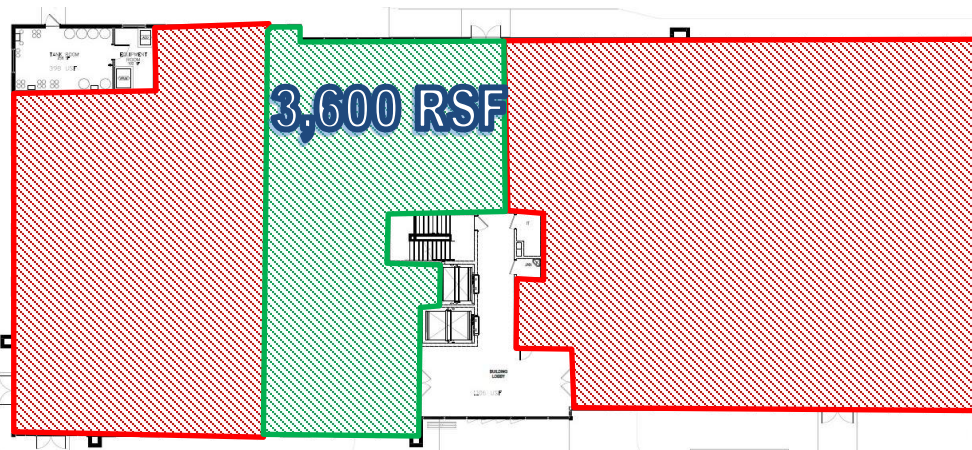
**BRAND
NEW**

COVERED PARKING

PRIVATE ENTRY

MONUMENT SIGNAGE

LAST SUITE REMAINING – MAKE A MOVE



1 Mile | \$74,954

3 Mile | \$78,338

5 Mile | \$76,607



1 Mile | 17K

3 Mile | 152K

5 Mile | 357K

AVG HH INCOME

POPULATION



CONTACT US

954-346-8200 x207

LUKE NILL

NEED SPACE? GOT SPACE?

WWW.FLORIDAMEDSPACE.COM

PRIME REGIONAL HEALTHCARE HUB GATEWAY MEDICAL PLAZA – MARGATE, FLORIDA



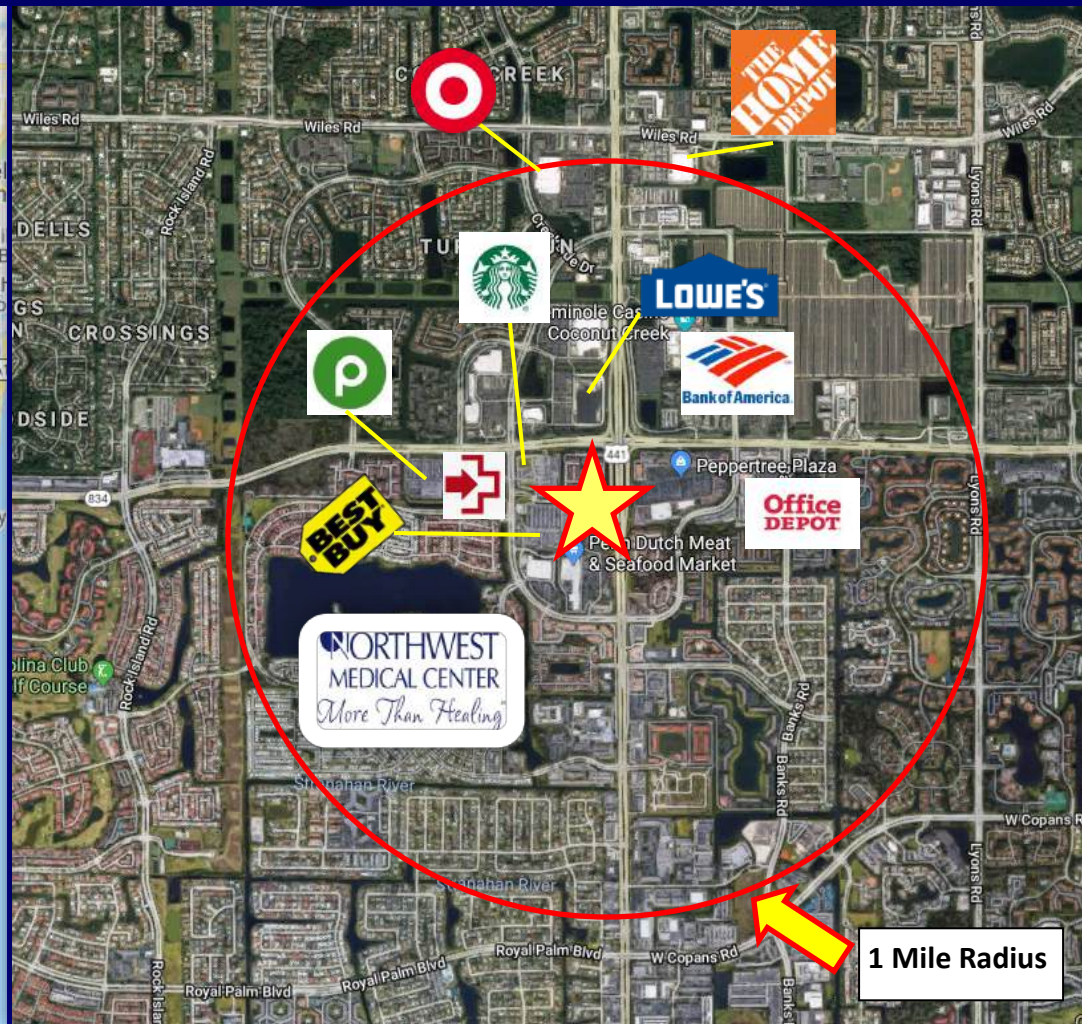
CENTRALLY LOCATED

- ◆ BOCA RATON & PARKLAND
- ◆ CORAL SPRINGS & POMPANO
- ◆ PLANTATION & FT. LAUDERDALE
- ◆ SAWGRASS EXPY & FL TURNPIKE
- ◆ SW QUADRANT OF 441 & SAMPLE



*AROUND THE CORNER FROM
WHEREVER YOU ARE.*

IN THE HEART OF BROWARD COUNTY



ATTRACT PATIENTS FROM A WIDE GEOGRAPHY

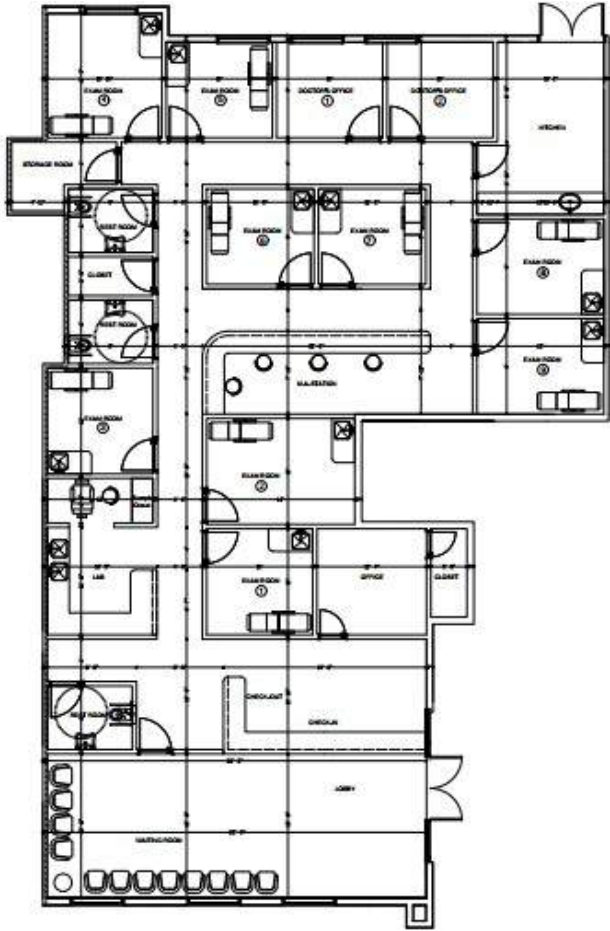
GATEWAY MEDICAL PLAZA

3251 N. State Road 7, Margate, Florida



SUITE 120

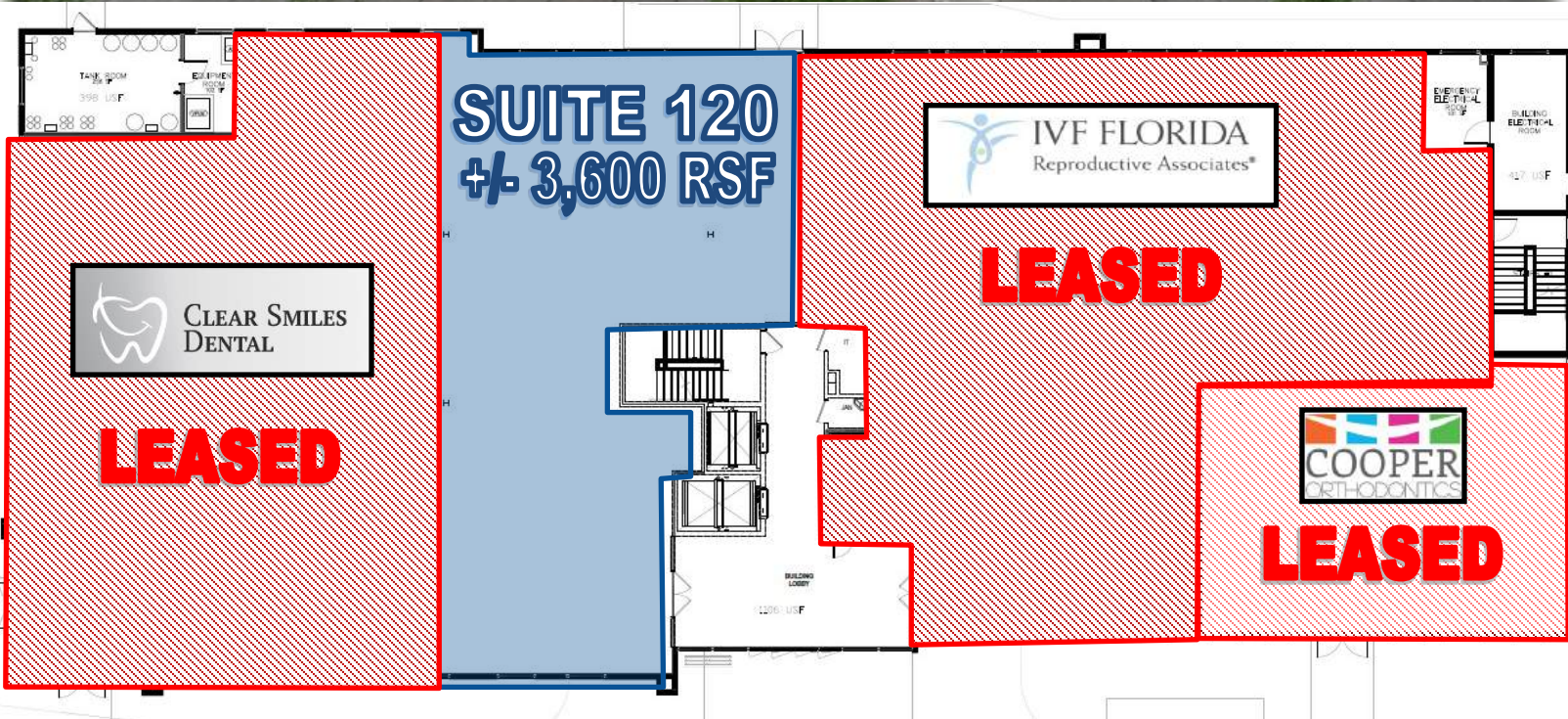
- ◆ UP TO 3,600 SQ FT
- ◆ COVERED PARKING
- ◆ PYLON SIGNAGE
- ◆ LOBBY ENTRY



CALL NOW! (954) 346-8200 x207

GATEWAY MEDICAL PLAZA

GROUND FLOOR- SUITE 120



CALL FOR A TOUR

954-346-8200 x207

LUKE NILL

NEED SPACE? GOT SPACE?

WWW.FLORIDAMEDSPACE.COM