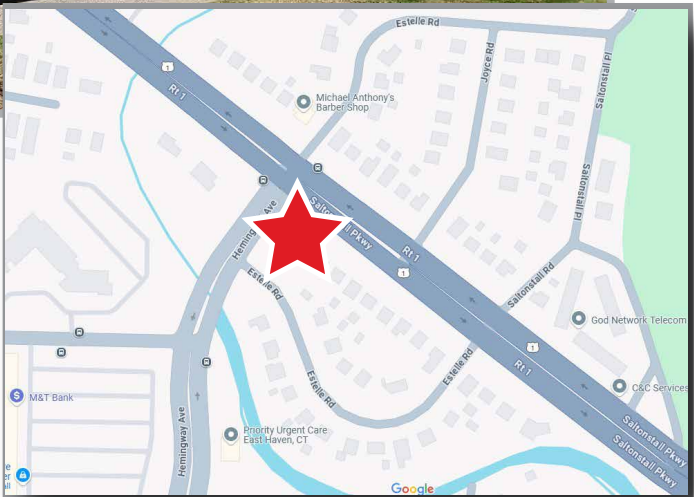


**FOR SALE -1,897 SF +/- ON .39 +/- ACRES
FREESTANDING COMMERCIAL BUILDING
128 Saltonstall Parkway (Route 1), East Haven, CT**



COLONIAL PROPERTIES



PROPERTY HIGHLIGHTS

Sale Price: **\$549,000**

Building Sq. Ft: 1,897 SF +/-

Taxes: \$6,812/Year

Year Built: 1940

Zoning: R-1

Location: Corner of Route 1 & Route 142

Traffic Count: 18,400 cars/day

Utilities: City Water/Sewer
Gas & HVAC

- Highly visible medical/office location with ADA Ramp
- High traffic signalized corner
- Walk up 2nd Floor & full basement for additional storage

*No warranty or representation, expressed or implied, is made as to the accuracy of the information contained herein, and same is submitted subject to errors, omissions, change of price, rental or other conditions, withdrawal without notice, and to any specific listing conditions, imposed by our principals.



200 Boston Post Road, Orange, CT 06477

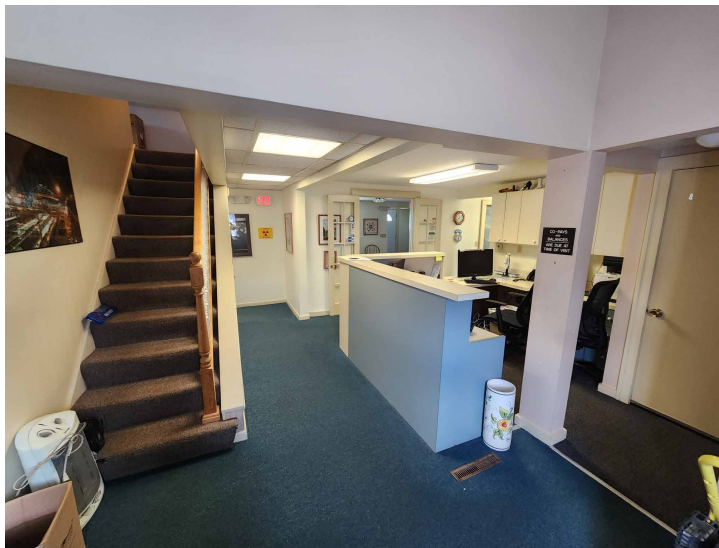
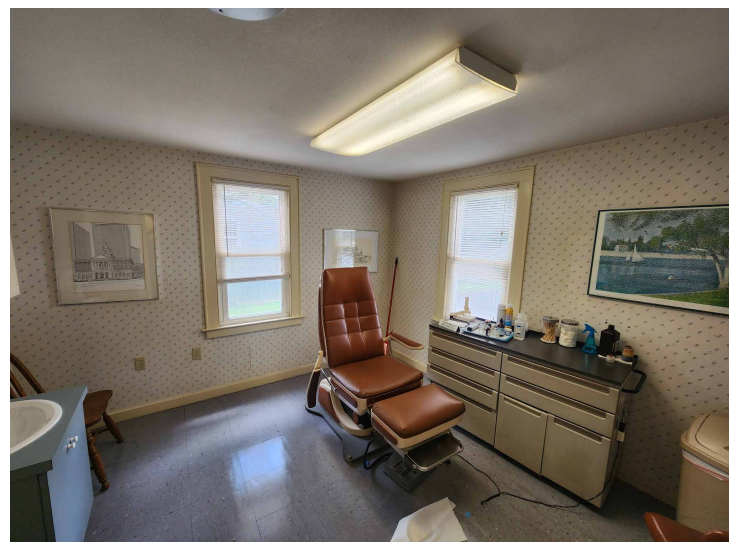
Fred A. Messore
w: 203-795-8060 x26
c: 203-988-6298
fred@colprop.com
www.colprop.com



FOR SALE -1,897 SF +/- ON .39 +/- ACRES
FREESTANDING COMMERCIAL BUILDING
128 Saltonstall Parkway (Route 1), East Haven, CT



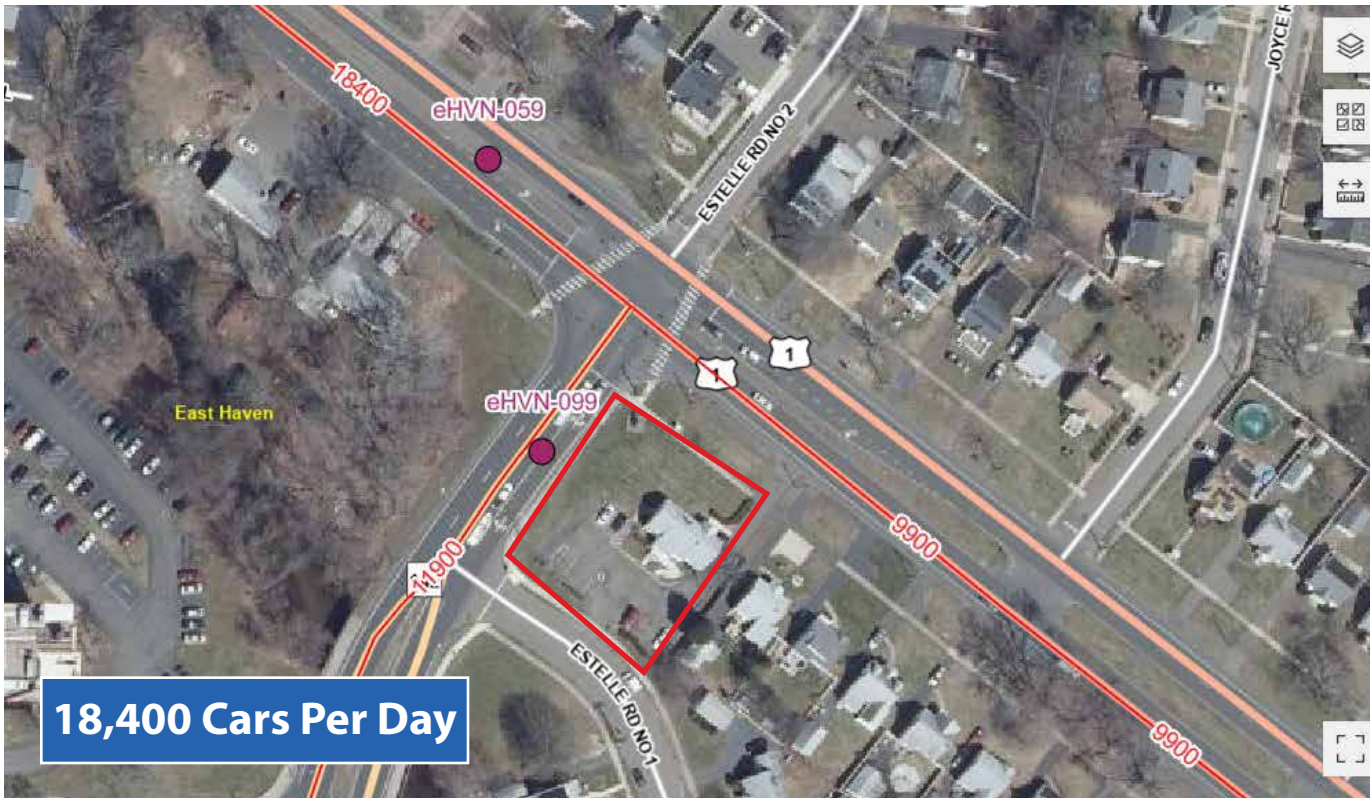
COLONIAL PROPERTIES



FOR SALE -1,897 SF +/- ON .39 +/- ACRES
FREESTANDING COMMERCIAL BUILDING
128 Saltonstall Parkway (Route 1), East Haven, CT



COLONIAL PROPERTIES

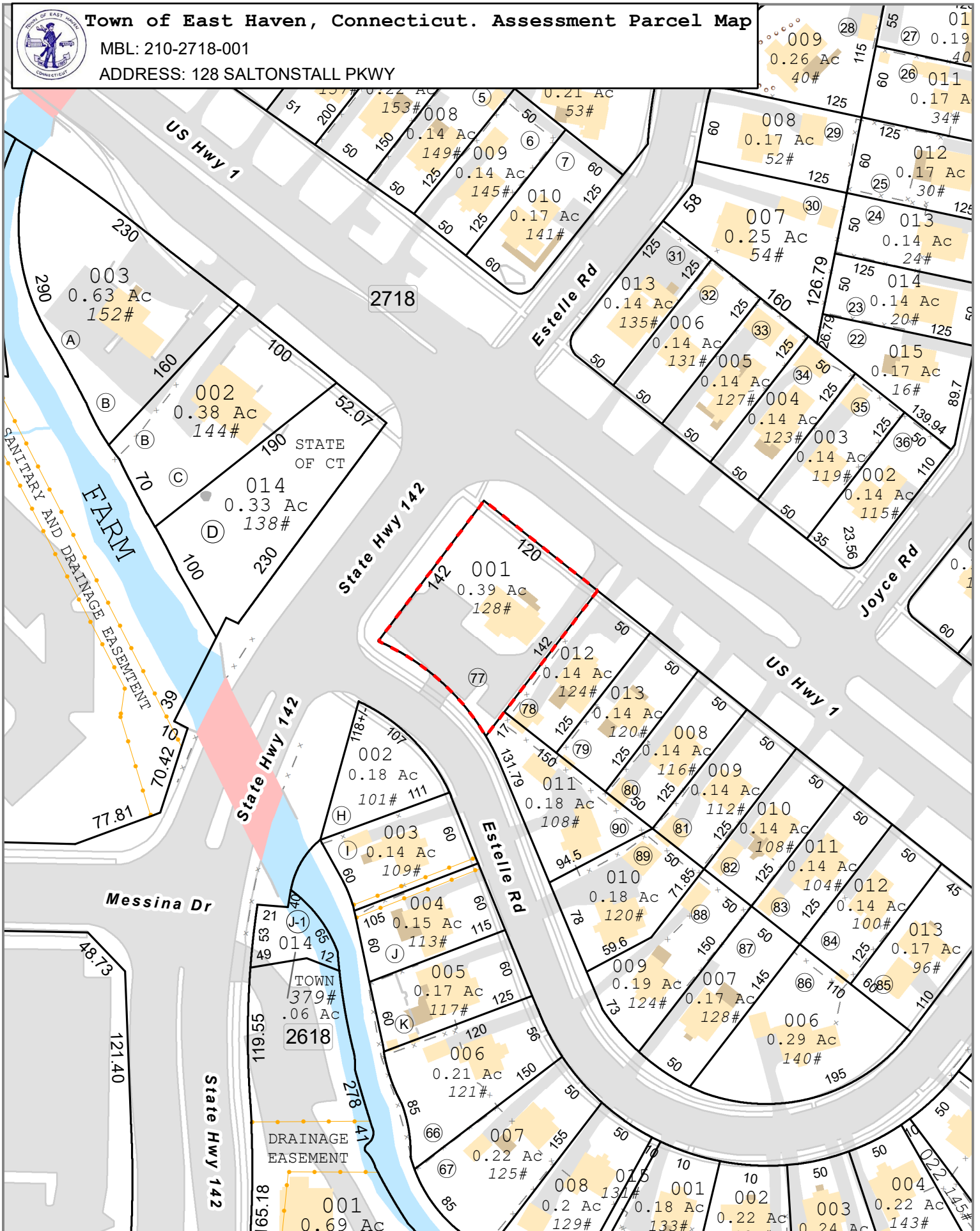




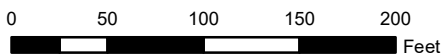
Town of East Haven, Connecticut. Assessment Parcel Map

MBL: 210-2718-001

ADDRESS: 128 SALTONSTALL PKWY



1 inch = 100 feet



Disclaimer:
This map is for informational purposes only. All information is subject to verification by any user. The Town of East Haven and its mapping contractors assume no legal responsibility for the information contained herein.

Map Produced: 9/2024