



2487 BRIGHT STAR ROAD

DOUGLASVILLE, GA 30134

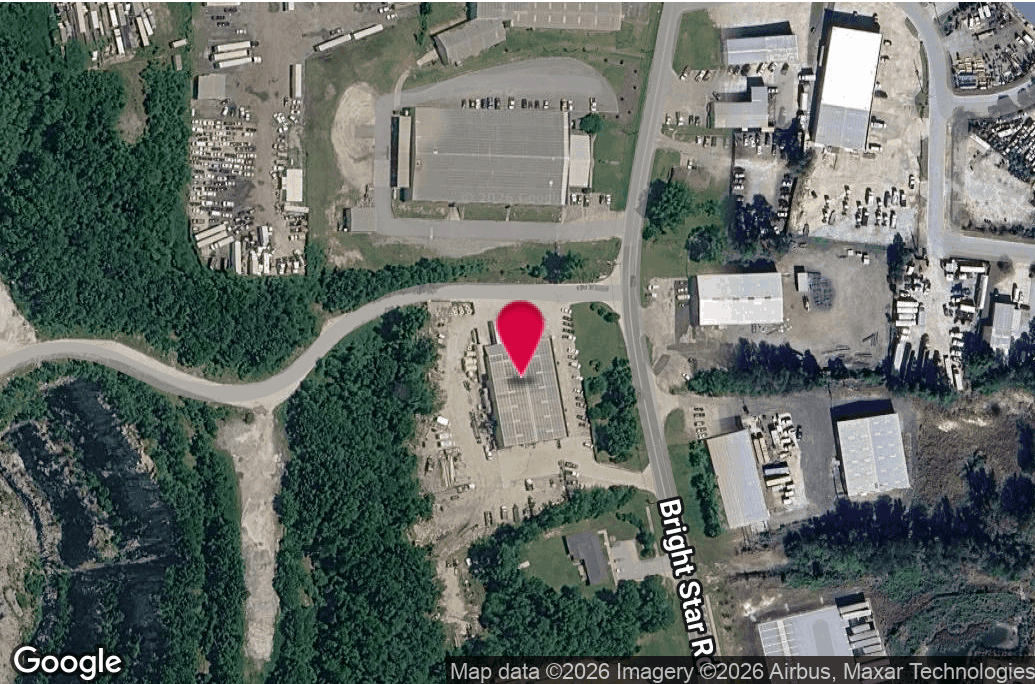
For Lease
16,000± SF Building

WILSON COVINGTON, SIOR
Senior Vice President
404.942.2073
wcovington@kingindustrial.com

King *Industrial
Realty, Inc.*

Industrial • Commercial • Investment
404.942.2000 | kingindustrial.com

FOR LEASE
16,000± SF



Map data ©2026 Imagery ©2026 Airbus, Maxar Technologies

PROPERTY HIGHLIGHTS

- IOS - Fenced Outside Storage
- 2,800± SF Office
- 1 Full Size Dock Platform
- 1 Knee High Dock
- 2 Drive-In Doors
- 20' Clear Height
- Close proximity to Bright Star Connector I-20 Access

BUILDING SUMMARY

Lot Size:	3.05 Acres
Building Size:	16,000 SF
Zoning:	CH

King Industrial
Realty, Inc.

CORFAC
INTERNATIONAL

Industrial • Commercial • Investment
404.942.2000 | kingindustrial.com

WILSON COVINGTON, SIOR

Senior Vice President

404.942.2073

wcovington@kingindustrial.com

Every effort has been made to provide accurate information, but no liability is assumed for errors or omissions.

ADDITIONAL PHOTOS



King Industrial
Realty, Inc.

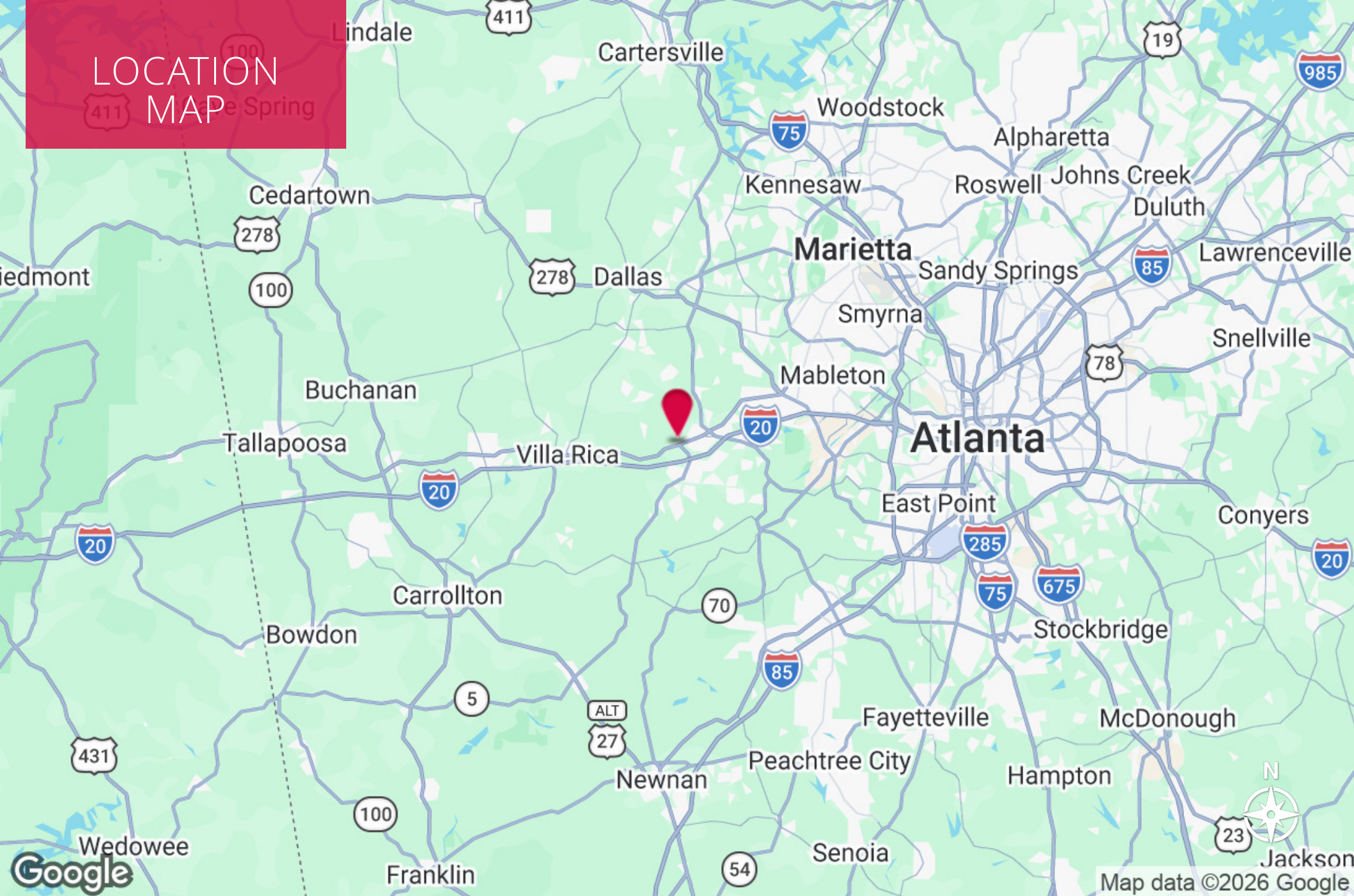
CORFAC
INTERNATIONAL

Industrial • Commercial • Investment
404.942.2000 | kingindustrial.com

WILSON COVINGTON, SIOR
Senior Vice President
404.942.2073
wcovington@kingindustrial.com

Every effort has been made to provide accurate information, but no liability is assumed for errors or omissions.

LOCATION MAP





EXCLUSIVELY LISTED BY:

WILSON COVINGTON, SIOR

Senior Vice President

wcovington@kingindustrial.com

404.942.2073

KING *Industrial
Realty, Inc.*

Industrial • Commercial • Investment
404.942.2000 | kingindustrial.com