

EASY ACCESS
OFF OF 107TH

11,400 SF
MEDICAL
OFFICE
SPACE

STAND ALONE
BUILDING

ASKING
RENTAL RATE:
NEGOTIABLE


TRANSWESTERN
REAL ESTATE
SERVICES

16621 S 107TH COURT | ORLAND PARK, IL

SUBURBAN CHICAGO MEDICAL OFFICE SPACE FOR SUBLEASE



Building Highlights

- Updated move-in ready Medical Office building constructed in 2003
- The location is between 108th and 104th Ave and Access off 167th Street
- Stand Alone Building with excellent signage
- Opportunity for single or multiple practices
- Multiple Exam Rooms, Dr.'s Offices, and Screening Rooms
- Centralized Reception and Waiting Area
- Located on the West side of Orland Park
- Turn-key Medical and Clinical Space



Contact Information:

Larry Serota	312.881.7038	Larry.Serota@transwestern.com
Cece Conway	312.881.7041	Cece.Conway@transwestern.com
Alex Genova	847.588.5648	Alex.Genova@transwestern.com

The information provided herein was obtained from sources believed reliable; however, Transwestern makes no guarantees, warranties or representations as to the completeness of accuracy thereof. The presentation of this property is submitted subject to errors, omissions, change of price or conditions, prior to sale or lease, or withdrawal without notice. ©2023 Transwestern.

EASY ACCESS
OFF OF 107TH

11,400 SF
MEDICAL
OFFICE
SPACE

STAND ALONE
BUILDING

ASKING
RENTAL RATE:
NEGOTIABLE



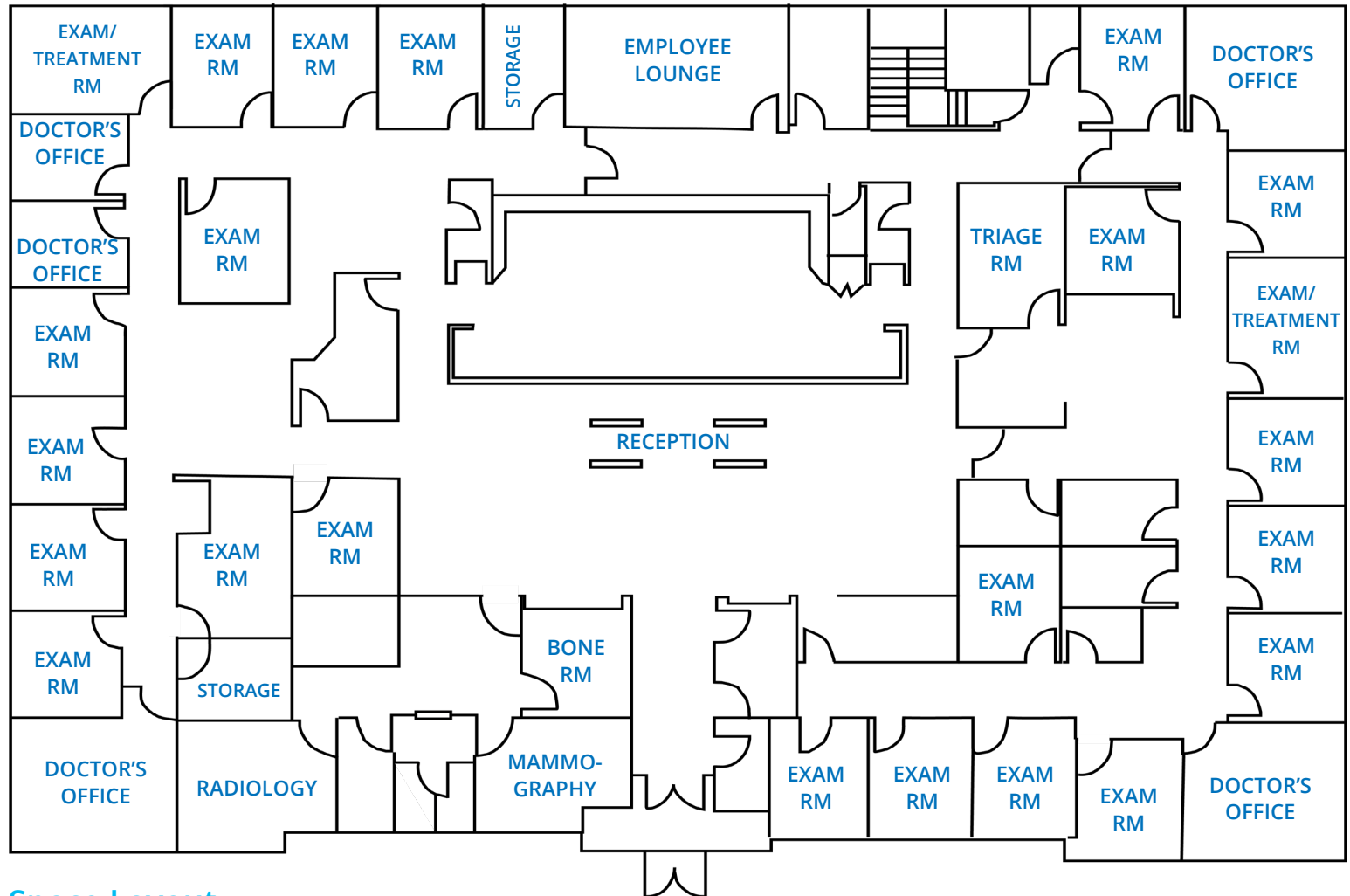
TRANSWESTERN

REAL ESTATE
SERVICES

16621 S 107TH COURT | ORLAND PARK, IL

SUBURBAN CHICAGO MEDICAL OFFICE SPACE FOR SUBLEASE

Floor Plan



Space Layout

- 23 Exam / Treatment Rooms
- 5 Doctor's Offices
- Employee Lounge
- Dedicated Reception
- Records Room
- Storage Rooms
- Radiology Room
- Waiting Areas

Contact Information:

Larry Serota	312.881.7038	Larry.Serota@transwestern.com
Cece Conway	312.881.7041	Cece.Conway@transwestern.com
Alex Genova	847.588.5648	Alex.Genova@transwestern.com

The information provided herein was obtained from sources believed reliable; however, Transwestern makes no guarantees, warranties or representations as to the completeness of accuracy thereof. The presentation of this property is submitted subject to errors, omissions, change of price or conditions, prior to sale or lease, or withdrawal without notice. ©2023 Transwestern.

EASY ACCESS
OFF OF 107TH

11,400 SF
MEDICAL
OFFICE
SPACE

STAND ALONE
BUILDING

ASKING
RENTAL RATE:
NEGOTIABLE



TRANSWESTERN

REAL ESTATE
SERVICES

16621 S 107TH COURT | ORLAND PARK, IL

SUBURBAN CHICAGO MEDICAL OFFICE SPACE FOR SUBLEASE

Aerial Views



Contact Information:

Larry Serota	312.881.7038	Larry.Serota@transwestern.com
Cece Conway	312.881.7041	Cece.Conway@transwestern.com
Alex Genova	847.588.5648	Alex.Genova@transwestern.com

The information provided herein was obtained from sources believed reliable; however, Transwestern makes no guarantees, warranties or representations as to the completeness of accuracy thereof. The presentation of this property is submitted subject to errors, omissions, change of price or conditions, prior to sale or lease, or withdrawal without notice. ©2023 Transwestern.