

±62,629 TO ±73,708 SF AVAILABLE FOR LEASE

CENTRAL CITY INDUSTRIAL PARK

5301 POLK STREET, BUILDING 12 | HOUSTON | TX | 77023

BUILDING 12

POLK STREET



CBRE

PROPERTY OVERVIEW

5301 POLK STREET | BUILDING 12

±62,629 TO ±73,708 SF

±15,093 SF OFFICE
(SECOND FLOOR: ±11,712)

10-TON CRANE (25' HOOK HEIGHT)

2-TON CRANE

±1-3 AC STORAGE YARD
AVAILABLE IN BUSINESS PARK

32' CLEAR HEIGHT CENTER BAY

16' CLEAR HEIGHT ON ENDS

INTERIOR WAREHOUSE OFFICE

2ND FLOOR OFFICE AVAILABLE

SPRINKLERED

3 PHASE/480V/1600 AMPS

COMMON LOADING DOCKS
AVAILABLE WITH LEVELERS

GRADE LEVEL ACCESS WITH
MULTIPLE 12'X14' DOORS

ON SITE SECURITY IN BUSINESS
PARK

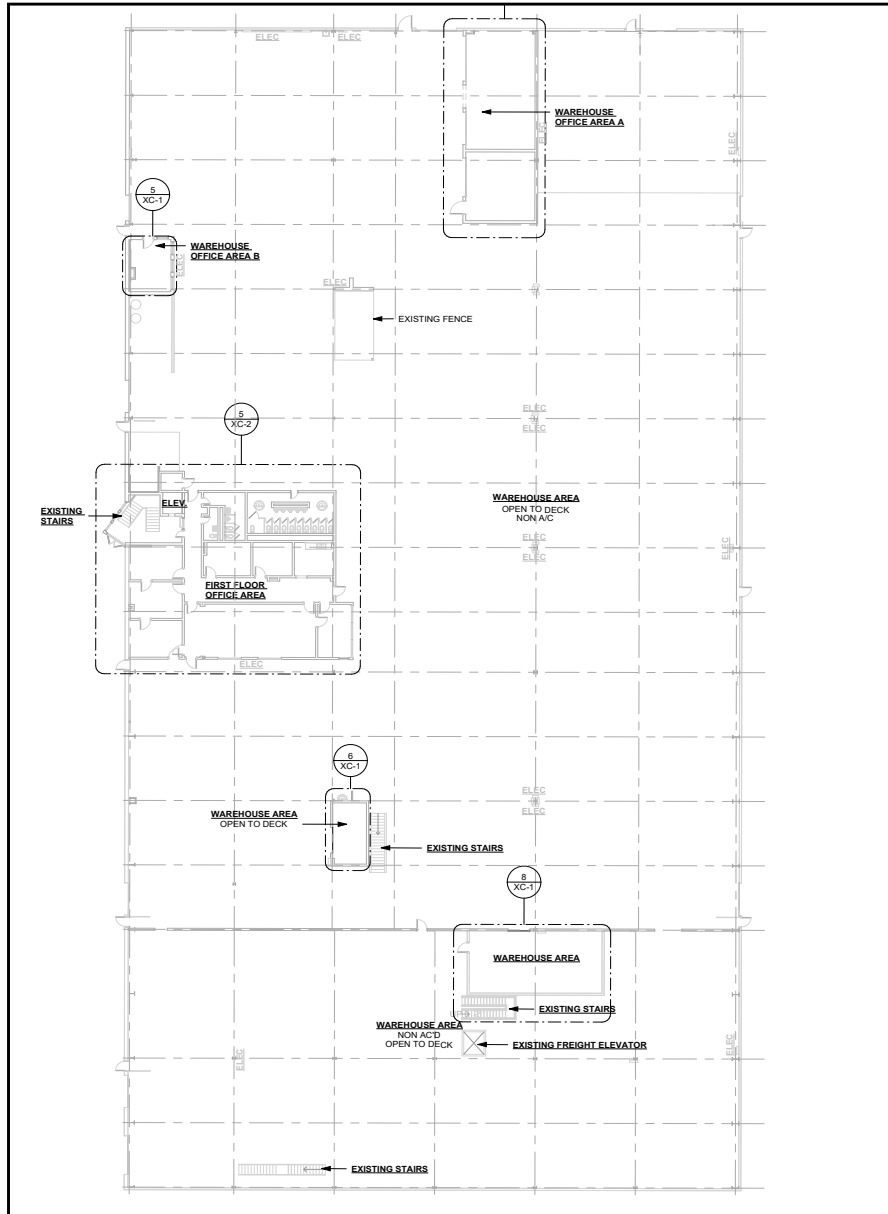
ON SITE PROPERTY
MANAGEMENT IN BUSINESS PARK



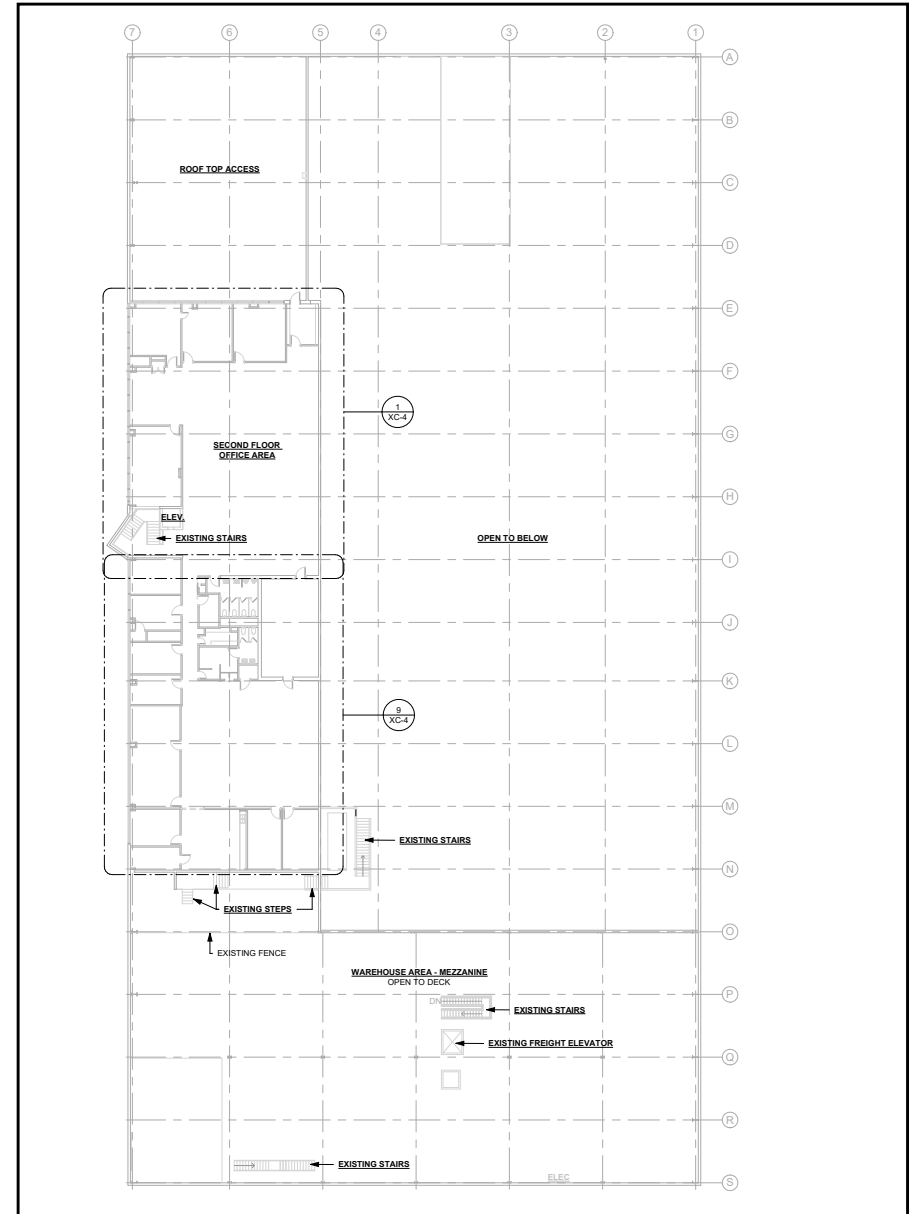
BUILDING LAYOUT

TWO STORY OFFICE

FIRST FLOOR - 3,381 SF



SECOND FLOOR - 11,712 SF





±62,629 TO ±73,708 SF AVAILABLE FOR LEASE

CENTRAL CITY INDUSTRIAL PARK

5301 POLK STREET, BUILDING 12 | HOUSTON | TX | 77023

ED FRANTZ
CBRE, Inc.
Senior Vice President

+1 713 577 1778
ed.frantz@cbre.com

LANI BAKER
Pelec Development
Property Manager

+1 713 921 7410
lbaker@pelecdevelopment.com

CBRE