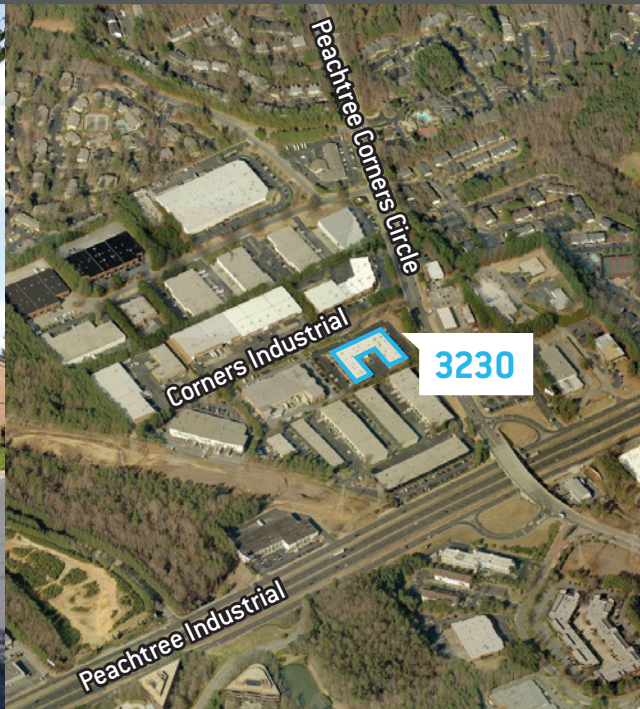


3230 PEACHTREE CORNERS CIRCLE

Norcross, GA 30092

CORNERS WEST BUSINESS PARK



BUILDING INFORMATION

Property Type:	Flex
Total Building Size:	42,293 SF
Available Size:	3,240 SF
Office Size:	1,924 SF
Loading Doors:	1 grade-level
Clear Height:	14'
Sprinkler:	Wet System



Tripp Ausband
770.825.3391
tausband@seefriedproperties.com

Joseph Kriss
678.904.1910
josephk@seefriedproperties.com

Doug Smith
678.904.1919
dougs@seefriedproperties.com

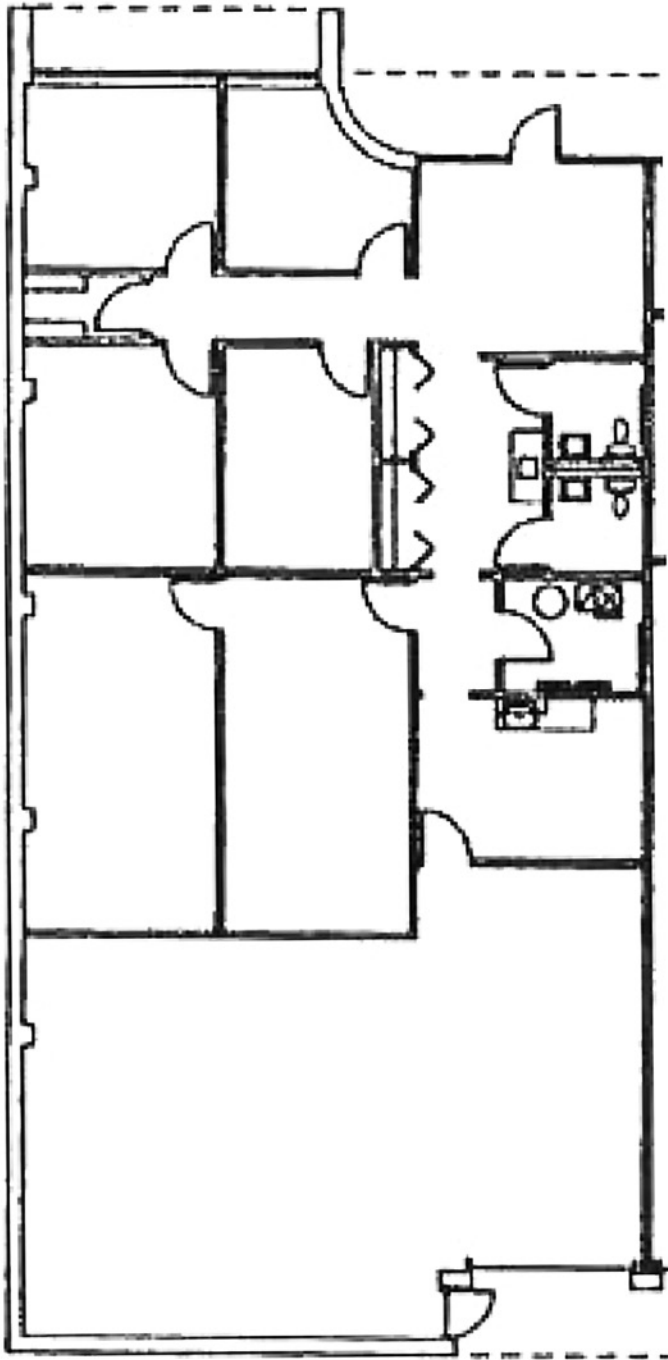
Seefried Industrial Properties
3333 Riverwood Parkway, Suite 200 | Atlanta, GA 30339
404.233.0204 | www.seefriedproperties.com

LEASED BY:
 **SEEFRIED**
INDUSTRIAL PROPERTIES

OWNED BY:
 **GID**

No guarantee, warranty or representation, express or implied, is made as to the accuracy of the information contained herein, and same is submitted subject to errors, omissions, change of price, rental or other conditions, or withdrawal without notice.

SUITE V – 3,240 SF



Tripp Ausband
770.825.3391
tausband@seefriedproperties.com

Joseph Kriss
678.904.1910
josephk@seefriedproperties.com

Doug Smith
678.904.1919
dougs@seefriedproperties.com

Seefried Industrial Properties
3333 Riverwood Parkway, Suite 200 | Atlanta, GA 30339
404.233.0204 | www.seefriedproperties.com

LEASED BY:
 **SEEFRIED**
INDUSTRIAL PROPERTIES

OWNED BY:
 **G|I|D**