

32932 WARREN ROAD
WESTLAND, MICHIGAN

MEDICAL FOR LEASE
1,050 Square Feet Available



**SIGNATURE
ASSOCIATES**
KNOW SIGNATURE | KNOW RESULTS

PREMIUM MEDICAL OFFICE



PROPERTY FEATURES

- 1,050 square feet available
- Fully renovated medical office building
- High visibility signage
- Must see property
- Join St. Joseph Mercy Health System and LEARN Behavioral
- Lease Rate: \$18.00/sq. ft. NNN



For more information, please contact:

JASON STOUGH
(248) 948 4180
jstough@signatureassociates.com

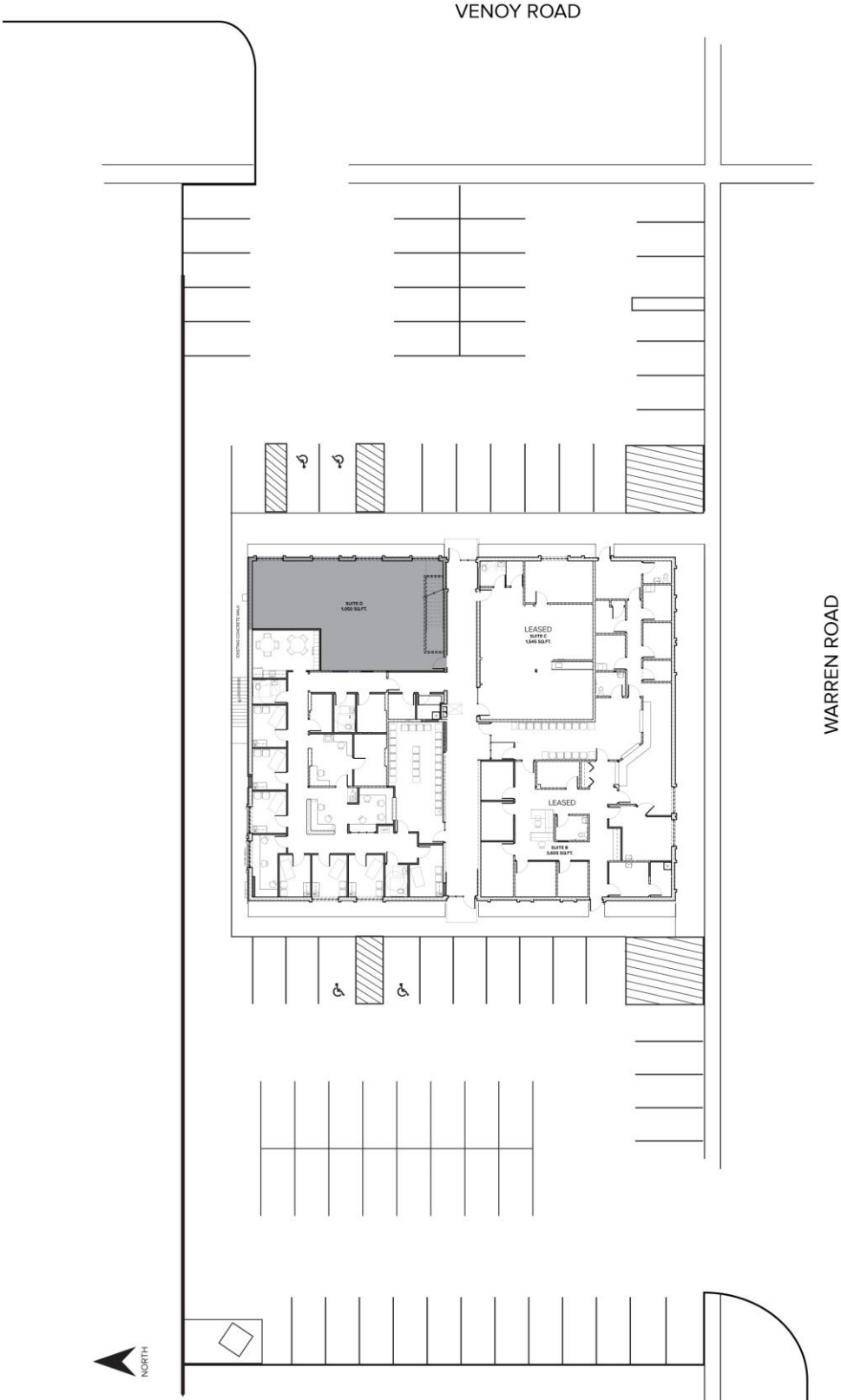
SIGNATURE ASSOCIATES
One Towne Square, Suite 1200
Southfield, MI 48076
www.signatureassociates.com

32932 Warren Road – Westland, Michigan

Medical For Lease

1,050
Square Feet
AVAILABLE

Site Plan



For more information, please contact:
JASON STOUGH
(248) 948 4180
jstough@signatureassociates.com

SIGNATURE ASSOCIATES
One Towne Square, Suite 1200
Southfield, MI 48076
www.signatureassociates.com

Information is subject to verification and no liability for errors or omissions is assumed. Price is subject to change and listing withdrawal.

32932 Warren Road – Westland, Michigan

Medical For Lease

1,050
Square Feet
AVAILABLE

Floor Plan



For more information, please contact:

JASON STOUGH
(248) 948 4180
jstough@signatureassociates.com

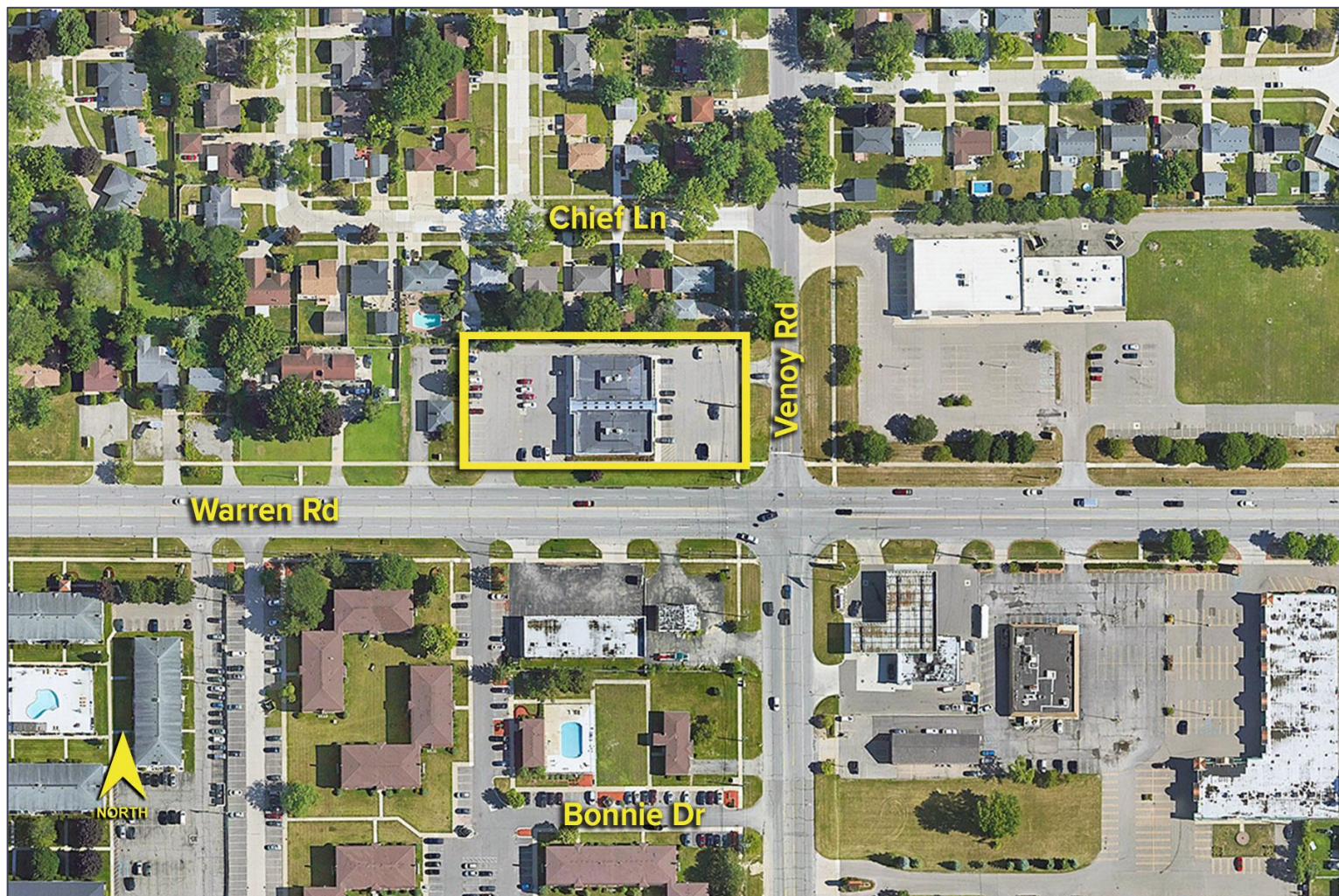
SIGNATURE ASSOCIATES
One Towne Square, Suite 1200
Southfield, MI 48076
www.signatureassociates.com

32932 Warren Road – Westland, Michigan

Medical For Lease

1,050
Square Feet
AVAILABLE

Aerial



For more information, please contact:

JASON STOUGH

(248) 948 4180

jstough@signatureassociates.com

SIGNATURE ASSOCIATES

One Towne Square, Suite 1200

Southfield, MI 48076

www.signatureassociates.com