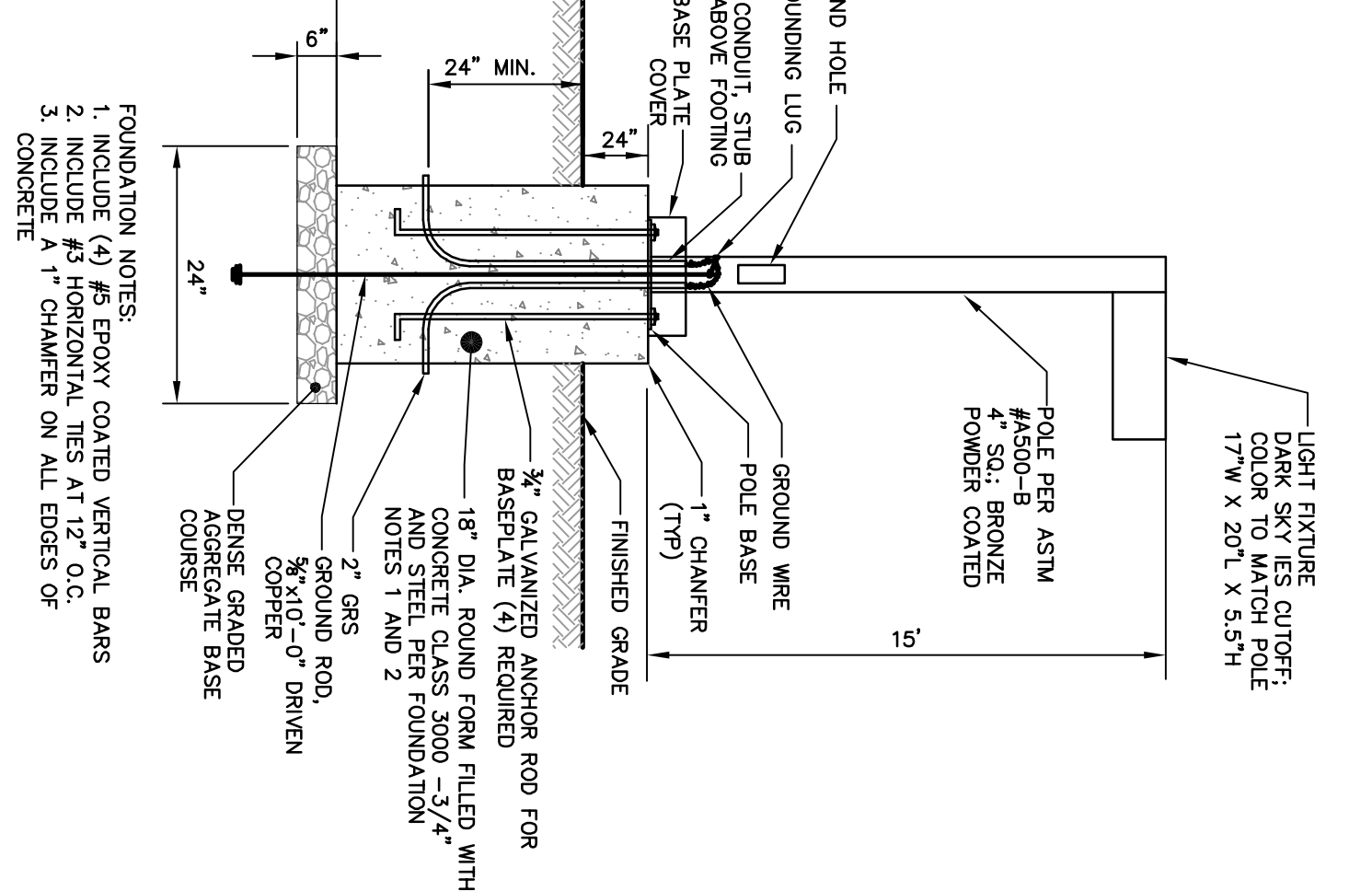
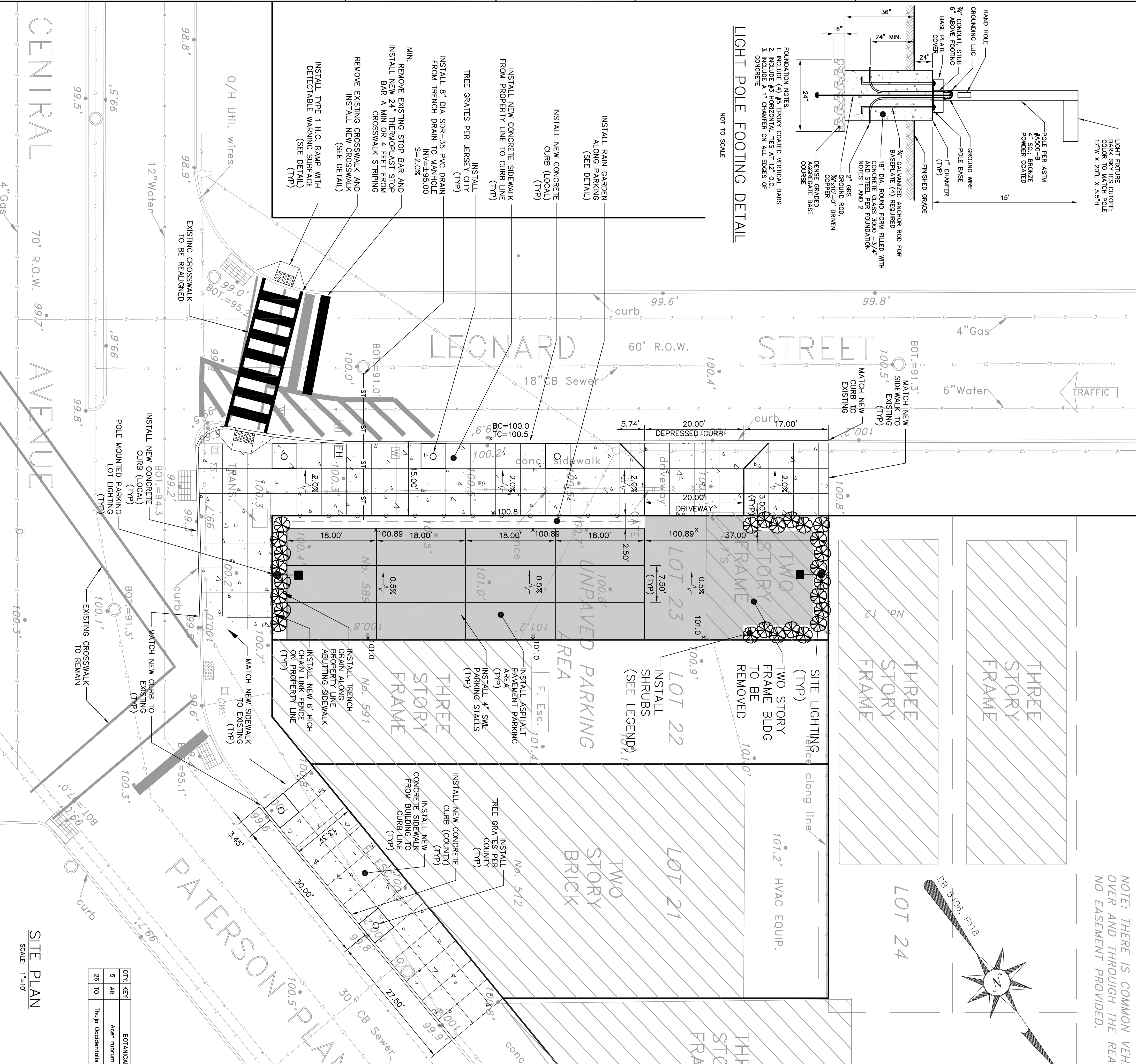


LIGHT POLE FOOTING DETAIL



NOT TO SCALE



NOTE: THERE IS COMMON VEHICULAR/PEDESTRIAN ACCESS OVER AND THROUGH THE REAR OF LOTS 21-23. THERE WAS NO EASEMENT PROVIDED.

JCMUA STANDARD REQUIREMENTS:

1. Bedding and backfill material shall comply with the requirements of the NJDOT's Standard Specification for Road and Bridge Construction, and the Design and Construction of Urban Stormwater Management Systems, ASCE Manuals and Reports of Engineering Practice No. 77, 1993, as applicable.
2. All sewer service connections 6-inches in size or smaller must be made directly to the sewer main and all connections 8-inches in size or larger must be made to a manhole. Where a connection to a manhole is required, a manhole bench and channel may require modification.
3. The JCMUA requires that sewer service connections to be re-used be televised to verify their integrity and that the pipe is free from any defects.
4. Each building connection requires a curb cleanout (refer to JCMUA detail drawings). 1-Wye cleanouts which enable cleaning in both directions should be installed on both the storm and sanitary lateral.
5. Proposed sewer lateral connection to JCMUA's sewer main shall be made above horizontal center line of pipe (refer to JCMUA sewer service connection details).
6. The size, material, depth, condition, direction of flow, and any other relevant conditions of the existing JCMUA sewer to which you plan to connect must be field verified by developer to determine if said connection is physically possible and practical.
7. Circular hole saws which are approximately sized or hand drills must be used to make the openings in the existing sewer to receive the laterals. Jackhammers, sledgehammers and other unsuitable tools or machinery which may damage the JCMUA's sewer main are not allowed and not allowed to fall into pipe.
8. A detail of any proposed manhole or catch basin showing all dimensions in addition to rim, grate and invert elevations of the structure and all pipes connected to the structure must be shown on plans. Refer to JCMUA standard detail drawings for manholes and catch basins.
9. Proposed manholes constructed in the public R.O.W. on existing or proposed JCMUA sewers shall be furnished with concentric manhole covers as manufactured by Campbell Foundry Co., Paterson #4428 or equal with outside cover diameter of 31-3/4 inches and inside cover diameter of 24 inches. The letters JCMUA and S.E.W.E.R. shall be cast on the cover. The manhole shall be constructed in accordance with Pattern #4428 (for 30-inch opening) or Pattern #41206 (for 41-inch opening) or equal furnished with a Patern #4428 concentric cover as specified in the preceding paragraph. Refer to JCMUA's standard detail for manhole frame and covers.
10. Storm inlets which are connected directly to JCMUA combined sewers must be furnished with a sump and trap as per JCMUA standard details.
11. The JCMUA has a combined sewer system which surcharges during wet weather periods resulting in possible sewage back-ups through plumbing fixtures (sinks, toilets, floor drains, etc.) below street level. This possibility must be addressed during the design/construction phase.
12. A drop manhole connection shall be used where there is a difference in elevation between the manhole and the crown of the outlet pipe from manhole. Refer to JCMUA's standard detail for drop manhole connection where applicable.
13. Test pits must be performed at the developer's expense during the design phase of the project to ensure that proposed sewers and sewer services may be constructed as proposed without conflicting with other underground utilities or structures.
14. All existing sewer mains and sanitary laterals to be abandoned must be filled with concrete slurry or removed from the ground. Catch basins and manholes must be removed from the ground. Connections must be cut and sealed at the main and precautions must be undertaken by the contractor to ensure concrete and other materials do not enter the main and create obstructions.
15. All proposed inlets/catch basins must be constructed with a bicycle safe grate and Campbell Foundry Co. Type 'N' outpiece where required.
16. Proposed water services require the review and approval of the Division of Water Engineering.
17. The contractor is responsible for obtaining permits for street openings from the Jersey City Building Department located at 30 Montgomery Street, Jersey City, NJ and all other applicable permits from agencies having jurisdiction.

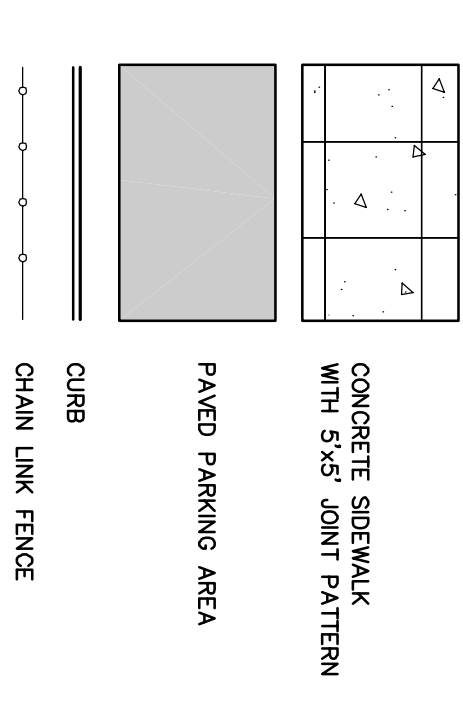
DEMOLITION NOTES:

1. THE CONTRACTOR SHALL CARRY OUT THE WORK OF THIS CONTRACT PLACING THE SAFETY AND PROTECTION OF THE SURROUNDING COMMUNITY AND PROPERTY AS THE PRIMARY CONCERN. THE CONTRACTOR SHALL BE RESPONSIBLE FOR OBTAINING ALL NECESSARY PERMITS AND OTHERWISE NECESSARY TO PROTECT ADJACENT AND ON-SITE PROPERTY, BUILDINGS, HOMES, FACILITIES AND UTILITIES.
2. THE CONTRACTOR SHALL ENSURE FREE AND SAFE PASSAGE OF PERSONS AROUND THE AREA OF DEMOLITION AS DIRECTED BY THE OWNER & ENGINEER. ALL OPERATIONS SHALL BE CONDUCTED SO AS TO PREVENT DAMAGE TO ADJACENT PROPERTIES AND UTILITIES. THE CONTRACTOR SHALL BE RESPONSIBLE FOR OBTAINING ALL NECESSARY PERMITS AND OTHERWISE NECESSARY TO PROTECT ADJACENT AND ON-SITE PROPERTY, BUILDINGS, HOMES, FACILITIES AND UTILITIES.
3. THE CONTRACTOR SHALL OBTAIN ALL NECESSARY PERMITS AND OTHERWISE NECESSARY TO PROTECT ADJACENT AND ON-SITE PROPERTY, BUILDINGS, HOMES, FACILITIES AND UTILITIES.
4. THE CONTRACTOR SHALL BE RESPONSIBLE FOR OBTAINING ALL NECESSARY PERMITS AND OTHERWISE NECESSARY TO PROTECT ADJACENT AND ON-SITE PROPERTY, BUILDINGS, HOMES, FACILITIES AND UTILITIES.
5. THE CONTRACTOR SHALL REMOVE AND DISPOSE OF ALL INACTIVE UNDERGROUND UTILITIES NOTED TO BE REMOVED, UNLESS OTHERWISE REQUIRED BY THE OWNER. THE CONTRACTOR SHALL PROJECT UTILITIES NOTED TO REMAIN ON THE PLANS. THE CONTRACTOR SHALL BE RESPONSIBLE FOR OBTAINING ALL NECESSARY PERMITS AND OTHERWISE NECESSARY TO PROTECT ADJACENT AND ON-SITE PROPERTY, BUILDINGS, HOMES, FACILITIES AND UTILITIES.
6. THE CONTRACTOR SHALL REMOVE AND DISPOSE OF ALL INACTIVE UNDERGROUND UTILITIES NOTED TO BE REMOVED, UNLESS OTHERWISE REQUIRED BY THE OWNER. THE CONTRACTOR SHALL PROJECT UTILITIES NOTED TO REMAIN ON THE PLANS. THE CONTRACTOR SHALL BE RESPONSIBLE FOR OBTAINING ALL NECESSARY PERMITS AND OTHERWISE NECESSARY TO PROTECT ADJACENT AND ON-SITE PROPERTY, BUILDINGS, HOMES, FACILITIES AND UTILITIES.
7. EXCESS SOILS (IE. NOT BEING RE-USED ON-SITE) SHALL BE DISPOSED OF OFF-SITE IN ACCORDANCE WITH ALL FEDERAL, STATE AND MUNICIPAL REQUIREMENTS.
8. ANY ITEM TO REMAIN THAT IS BROKEN DURING CONSTRUCTION SHALL BE REPLACED IN ACCORDANCE WITH THE CONTRACTOR'S EXPENSE.
9. CONTRACTOR TO INSTALL SOIL EROSION AND SEDIMENT CONTROL. IN ACCORDANCE WITH THE APPROVED SOIL EROSION AND SEDIMENT CONTROL PLANS AND DETAIL ENGINEER OR SOIL CONSERVATION SERVICE.
10. CONTRACTOR TO COORDINATE WITH UTILITY COMPANY FOR REMOVAL AND RELOCATION OF UTILITIES WHEN NECESSARY.

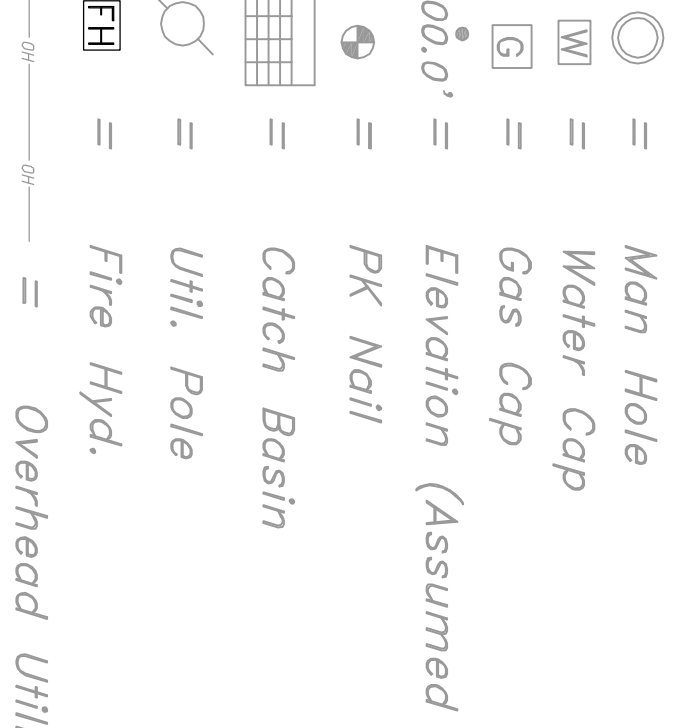
SITE PLAN NOTES:

1. ROAD OPENING PERMIT MUST BE OBTAINED FROM THE CITY OF JERSEY CITY DIVISION OF ENGINEERING PRIOR TO ANY CONSTRUCTION IN OR OCCUPANCY OF THE PUBLIC RIGHT-OF-WAY.
2. INSTALL APPROVED TREE SPECIES IN TREE PITS ALONG COUNTY ROAD AS RECOMMENDED BY COUNTY.

PROPOSED SITE LEGEND



EXISTING SITE LEGEND



SITE PLAN

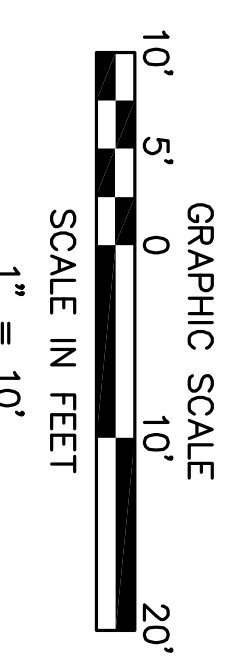
QTY	KEY	BOTANICAL NAME	COMMON NAME	SIZE	ROOT	REMARKS
5	AR	Acer rubrum 'Red Sunset'	Maple Red Sunset	25" Cal	B&B	STREET TREE
26	TO	Thuja Occidentalis 'Emerald Green'	Emerald Green Arborvitae	5 FEET	B&B	SHRUB

STREET TREE SCHEDULE

QTY	KEY	BOTANICAL NAME	COMMON NAME	SIZE	ROOT	REMARKS
5	AR	Acer rubrum 'Red Sunset'	Maple Red Sunset	25" Cal	B&B	STREET TREE
26	TO	Thuja Occidentalis 'Emerald Green'	Emerald Green Arborvitae	5 FEET	B&B	SHRUB

SITE PLAN

SCALE: 1" = 10'



Edwin A. Reimon, P.E., C.M.E.
251 Ridge Road
Lyndhurst, NJ 07071

Job #: 2014-0700
Scale: AS SHOWN
Date: 08/06/2014

Drawn By: BAC
Checked By: E.A.R.

Sheet #: 3 of 4

589 CENTRAL AVENUE & 512 PATERSON PLANK ROAD
QUANTUM SOUND LOUNGE
BOOCK 503 LOTS 21 & 23
Hudson County
New Jersey