



Sumner Professional Office Building

Available for lease NOW is 1,564sf of office space in beautiful Sumner, WA. Located at 1006 Fryar Avenue, this spacious office features a mostly open floor plan and two, large private offices with reight windows, storage, and a break area. The picture windows across the front offer plenty of natural light and lend to a welcoming atmosphere.

The property is conveniently situated on the corner of Fryar Ave and Cannery Way offering excellent street exposure. The pole sign on Cannery Way is highly visible to traffic. The parking is ample and the property is complemented by beautiful, mature landscaping. The building's strategic location, combined with its functional layout and well-kept surroundings, makes it an ideal choice for businesses seeking a professional setting with excellent visibility.

Property Overview

- Open space plan with two private offices
- Bonus storage space
- Excellent signage exposure
- Easy access
- Space Size: 1,564sf of office
- Lease Rate: \$17/sf/yr plus NNN

DISCLAIMER: The above information has been secured from sources believed to be reliable, however, no representations are made to its accuracy. Prospective tenants or buyers should consult their professional advisors and conduct their own independent investigation. Properties are subject to change in price and/or availability without notice.



728 Broadway Ste. 2B
Tacoma, WA 98402
johnson-commercial.com

Margot Johnson
margot@johnson-commercial.com
O: (253) 589-9999 C: (253) 209-9998

Timothy Johnson
timothy@johnson-commercial.com
O: (253) 589-9999 C: (253) 209-9999



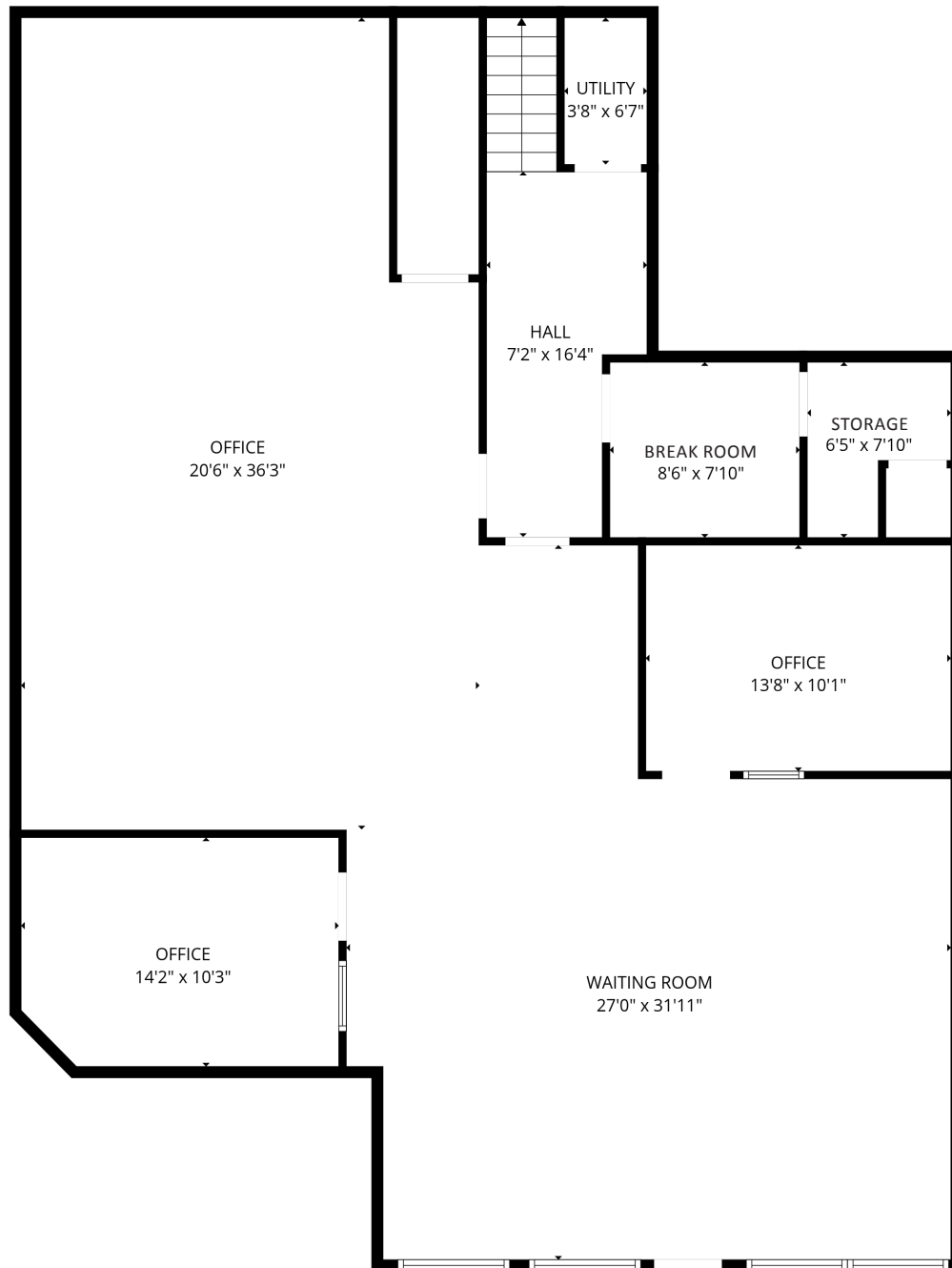
INTERIOR PHOTOS



728 Broadway Ste. 2B
Tacoma, WA 98402
johnson-commercial.com

Margot Johnson
margot@johnson-commercial.com
O: (253) 589-9999 C: (253) 209-9998

Timothy Johnson
timothy@johnson-commercial.com
O: (253) 589-9999 C: (253) 209-9999



FLOOR PLAN CREATED BY CUBICASA APP. MEASUREMENTS DEEMED HIGHLY RELIABLE BUT NOT GUARANTEED.



728 Broadway Ste. 2B
Tacoma, WA 98402
johnson-commercial.com

Margot Johnson

margot@johnson-commercial.com
O: (253) 589-9999 C: (253) 209-9998

Timothy Johnson

timothy@johnson-commercial.com
O: (253) 589-9999 C: (253) 209-9999