

TOK

COMMERCIAL

SPRING CREEK

10173 W OVERLAND RD | BOISE, ID 83709



SALE PRICE
\$1,052,000!

CONTACT



PAT SHALZ SIOR

208.947.0834

pat@tokcommercial.com

HOLLY CHETWOOD CCIM

208.947.0827

holly@tokcommercial.com

HIGHLIGHTS



- Ideal central Boise location.
- Perfect for general or medical office.
- Ample onsite parking.
- Great layout with functional office and work area.
- Monument signage visible from Overland Road.

DETAILS



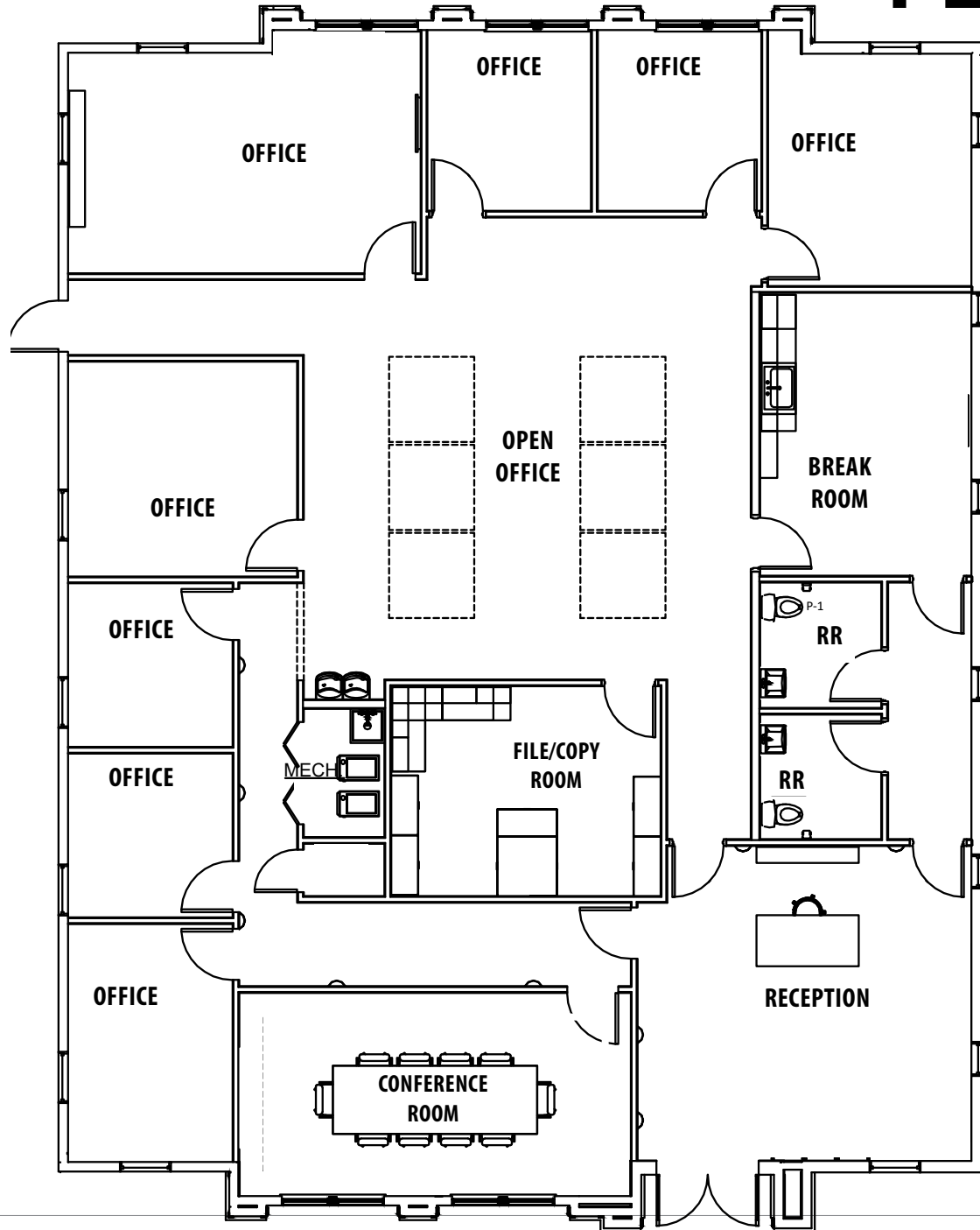
SALE PRICE:	\$1,052,000
RATE:	\$275 SF
SUBMARKET:	Southwest Boise
BLDG TYPE:	Office
BLDG SIZE:	3,826 SF
LOT SIZE:	0.52 Acres
PARKING:	Ample
ZONING:	R-2D

UPDATED: 1.6.2025

THIS PROPERTY IS EXCLUSIVELY MARKETED BY TOK BOISE LLC DBA TOK COMMERCIAL. This information was obtained from sources believed reliable but cannot be guaranteed. Any opinions or estimates are used for example only.

TOKCOMMERCIAL.COM

FLOOR PLAN





S FIVE MILE RD

W OVERLAND RD

SITE

TOK

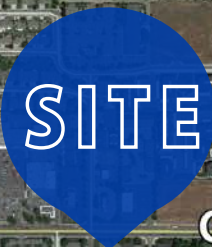
COMMERCIAL

Franklin Rd



Five Mile

Maple Grove



Overland Rd



Overland St

Regent Ave

Countryman Dr

N Countryman Dr

W Mediterranean Ct

Ar-T Dr

Harvester Dr

Goldking Way

Ranchero Way

Pass Dr

S Five Mile

Denell Way

Calico St

W Calico St



UPDATED: 1.6.2025

THIS PROPERTY IS EXCLUSIVELY MARKETING BY TOK BOISE LLC DBA TOK COMMERCIAL This information was obtained from sources believed reliable but cannot be guaranteed. Any opinions or estimates are used for example only.

TOKCOMMERCIAL.COM