



# Now Leasing

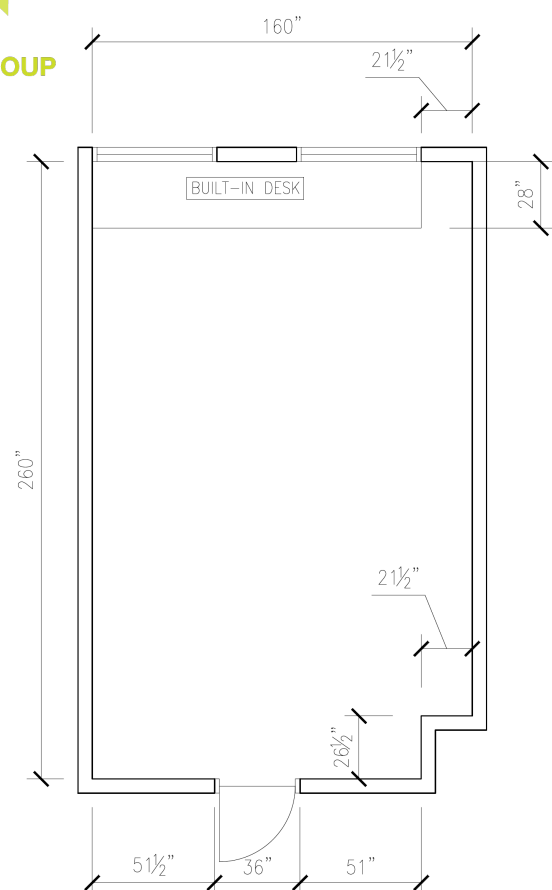
320 Pine Avenue  
Downtown Long Beach



Offered at \$2.20 sq. ft./month







LAYOUT PLAN

SCALE: 1/4"=1'-0"

PROJECT: 320 Pine Avenue #501 Long Beach, CA

One of the crown jewels of the skyline of Downtown Long Beach soars the Historic F&M Tower. Built in 1922 and designed by renowned architects Alec Curlett and Claud Beelman (The Roosevelt Building, the Jewelry Mart, The Talmadge and The Park Plaza Hotel), the property boasts classic Art Deco massing and setbacks with Gothic details.

Embracing its glorious history yet nodding to the modern demands for office space, each suite inside the F&M Tower can be positioned as traditional office space or upgraded into loft style innovative space. Tenants range from logistic style companies needing to be close to the Ports of Long Beach and Los Angeles, architecture and design firms, non-profits, and start-ups.

The building has a common conference room for tenant use, high speed internet and an on-site management/leasing office. With ground floor retail space and located in the heart of the Downtown Long Beach District adjacent to the newest hip core of chic eateries and gastro pubs on The Promenade in addition to an abundance of quality housing within reach, the F&M Tower is the ideal place to call your business home! Located in the heart of Downtown Long Beach, the F&M Tower soars 10 stories above the skyline with views of Los Angeles, Palos Verdes, Orange County, and, of course, the Pacific Ocean.



### Amenities: include:

- Short or long term leases available
- Attractive tenant relocation credits available
- Easy access to parking
- Air conditioning and janitorial services
- Prime downtown Long Beach location
- On-site leasing and management staff



CADMANGROUP



(562) 495-3700



leasing@cadmangroup.net



320 Pine Avenue #1000, Long Beach, CA 90802